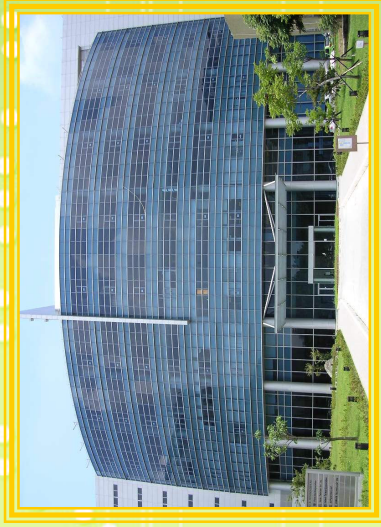


Welcome



Welcome



YoungTek Electronics Corp.

Stock No: 6261

Brief Introduction

Spokesman : Tony Liu
Date : 31 October, 2012



Contents

Time

- Brief Introduction of YTEC 16:00~14:20
- Q & A 16:20~17:00

Contents

Company Profile

- **Brief Introduction**
- **Factory Overview**
- **Company Milestone**
- **Company Management Concept**
- **OEM Services**
- **R&D Roadmap and Own Product Development**
- **Revenue Growth**
- **Company Mission**



Brief Introduction

Company Profile

Found Time : 1991/July

Chairman : Billy Wang

President of Service Group : Jeff Chang

President of Own Product Group : Glen Chen

Employees : 1019 persons

Capital : NTD 1128million (USD 38.4 million)

Factories : **Plant 1** : Special & substrate sawing

SBIP Plant : IC back-end turn-key service, ATE&AOI

Li Hsin Plant : LED back-end turn-key service

An Ping Plant : LED Testing & sorting

Xiamen/Changzhou Plant : LED Testing & sorting

CRT (Shenzhen) Plant : IC Testing & sorting

WuJiang MightYtek Plant : IC Assembly

Business Items :

1.Semiconductor and LED OEM: IC testing, wafer sawing, grinding, chip sorting and LED testing, laser scribing, sorting and substrate sawing.

2.Design, manufacture and sales of semiconductor equipments: Full-function IC tester, logic ,analog, Mixed-Signal IC Tester ,IC handler, **LED** tester, prober ,Handler and sorter, LED dispenser. CCM equipments, AOI system.



Factory Overview

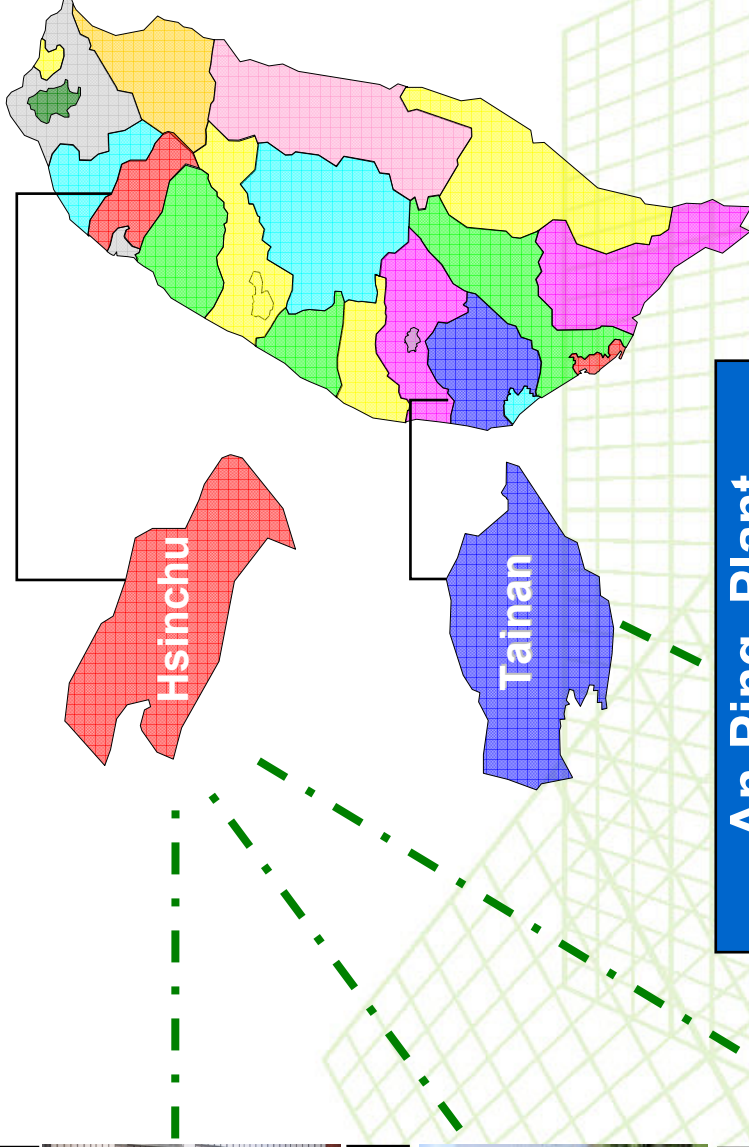
Company Profile



SBIP Plant



Li-Hsin Plant



An-Ping Plant



Factory Overview

Company Profile

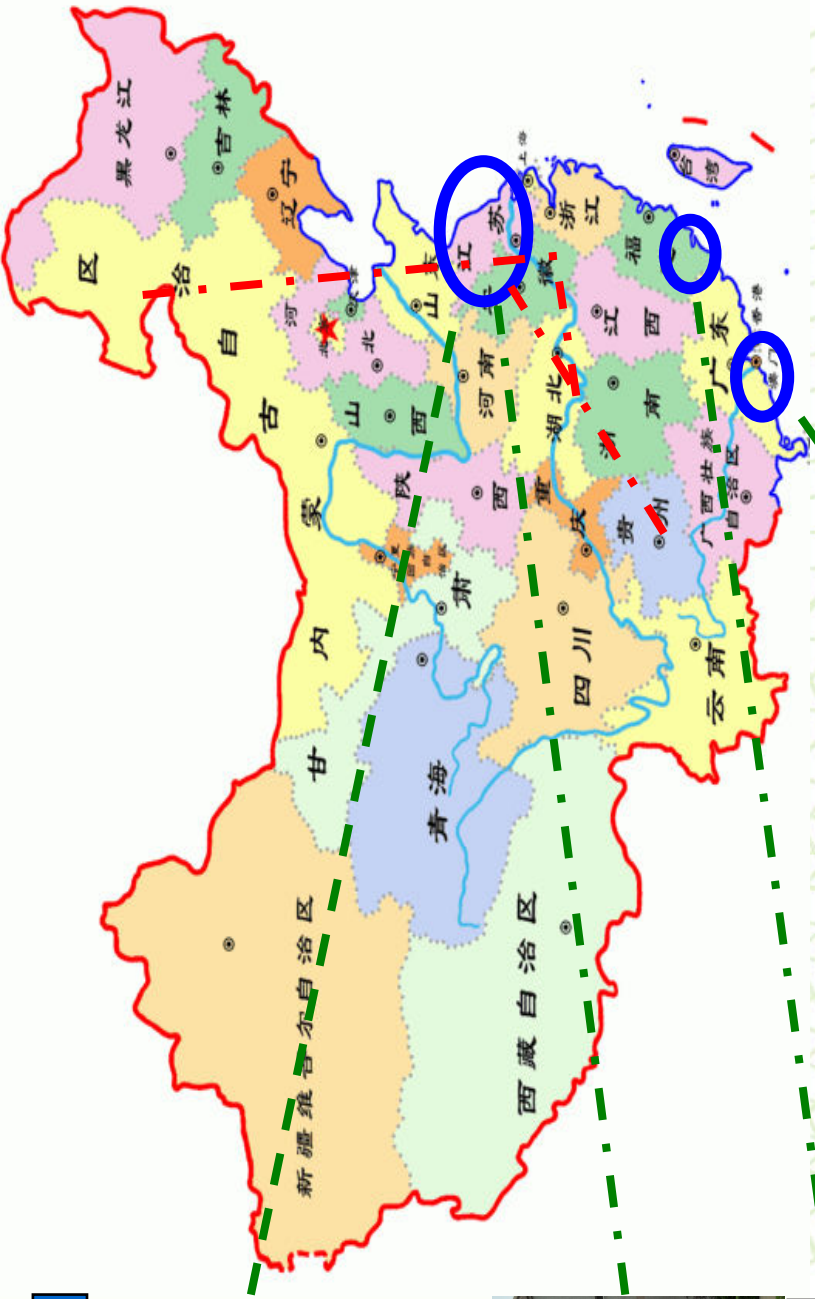
Changzhou YT Plant



Wujiang MightYtek Plant



Xiamen YT Plant



CRT (Shenzhen) Plant



YoungTek Electronics Corp.

Company Milestone

Company Profile

- 1991/Jul.** YTEC was founded and the capital is NTD \$ 5 million.
- 1998/Oct.** Develop logic tester (Goblin) with 5 MHz/40 pins.
- 2000/Mar.** Achieved the certification of ISO 9001
- 2000/Jul.** Full-function IC tester was verified by industry agency with predominant product development project.
- 2002/Nov.** SEC (Securities and Exchange Commission) approve YTEC to public stock.
- 2003/Nov.** LED OEM service was established.
- 2003/Dec.** Obtain OTC certification.
- 2004/Mar.** Got the approval to establish the branch in Hsin chu SBIP.
- 2004/Mar.29** Listed in Taiwan stock exchange. (Stock No.: 6261)
- 2006/Mar.** Signs the cooperation agreement of the IC test system technology. with Agilent Technologies
- 2006/Dec.** Achieved the certification of ISO 14001 and OHSAS 18001.
- 2007/Jul.** Develop Tainan An Ping plant for LED sorting.
- 2008/May** Develop Li Hsin plant for LED test & sorting.
- 2008/Oct.** Achieved the certification of ISO/TS 16949.
- 2009/May.** To establish the Xiamen Young Tek Electronics Co., Ltd. to provide the LED Backend Turn-key service.
- 2009/Jun.** Solar silicon substrate inspection system was verified Science Park Administration with development project.
- 2010/Mar.** Develop SBIP plant for wafer grinding & sawing.
- 2010/Sep.** To establish the Changzhou YoungTek Electronics Co., Ltd. to provide the LED Backend Turn-key service.
- 2011/Jan.** Achieved the certification of IECQ QC080000.
- 2011/Dec.** To establish the WuJiang MightYtek Semiconductor Co., Ltd. to provide the Semiconductor Backend Testing & Ass'y Turn-key service.
- 2012/Feb.** To establish the Shenzhen Clear Rich Tech. Co., Ltd. to provide the Semiconductor Backend Testing service.
- 2012/May.** Signs the cooperation memorandum, the expansion related marketing functions Development with Yoshikawa Semiconductor Co., Ltd.



Company Management Concept

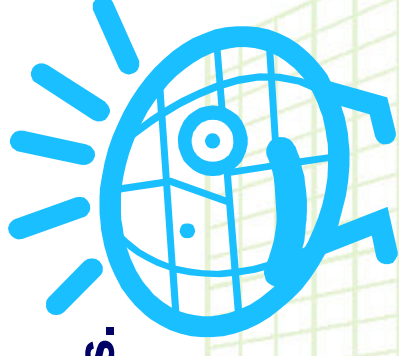
Company Profile

經營理念：(Management Concept)

主人翁經營理念；下工程即是客戶。

Treat YTEC as your own company. (Host concept)

Treat all post projects and processes as our customers.



工作態度：(Working Attitude)

成功者找方法；失敗者找藉口。

A successful person will find the way to overcome a challenge

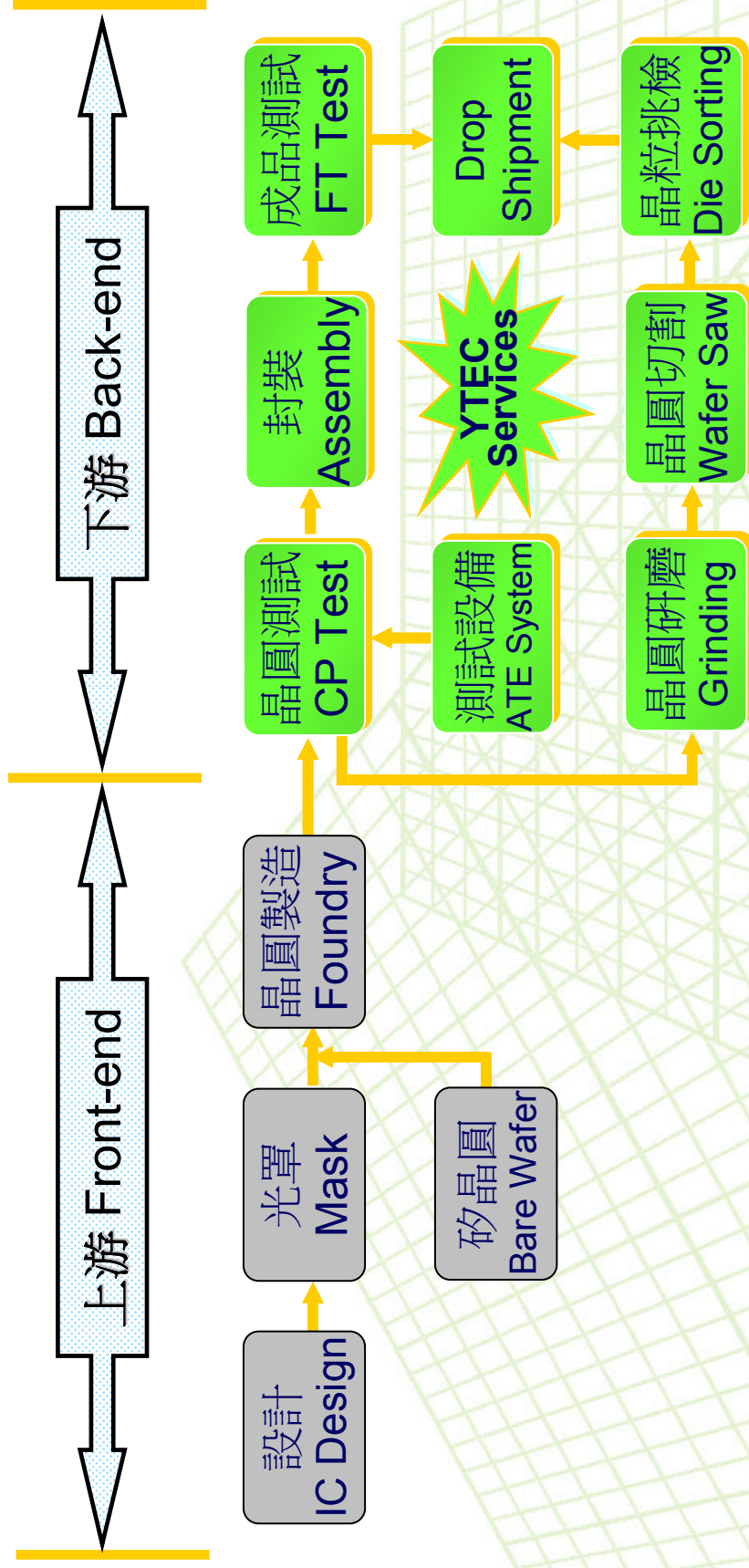
Loser finds excuses.



YTEC YoungTek Electronics Corp.

IC OEM Services

Company Profile

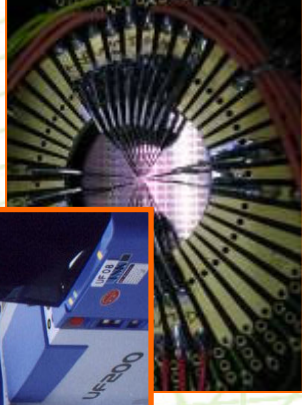
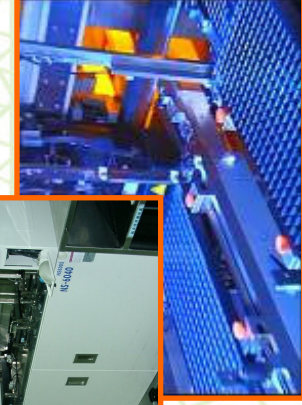
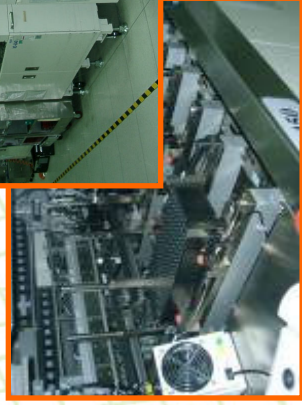
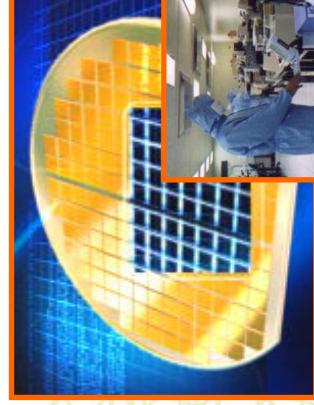
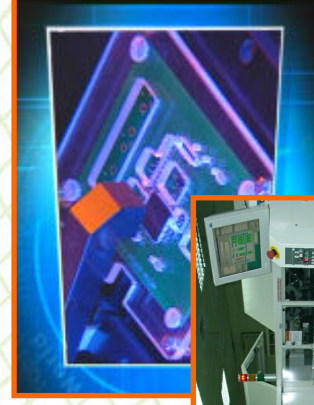
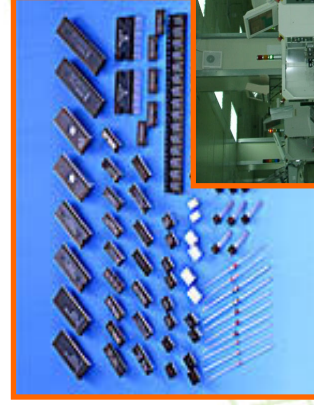


YoungTek Electronics Corp.

專業測試代工服務(IC Testing OEM)

Company Profile

- ❑ 4"~12" Wafer testing (CP)、Test program and test kit development (Probe-card design and manufacture).
- ❑ IC packaging testing (FT)、Package type : DIPs、T/SOPs、L/QFPs、QFN、L/BGA...
- ❑ PC peripheral product、Logic、Analog、Mixed-signal、No-volatile memory、MCU、LCD driver IC、High speed/ High pin count (Scud-1A 512C) testing.
- ❑ CIS(CMOS Image Sensor)、RF、SoC product testing
- ❑ Others : Laser trimming、Lead scanning、Test program and test kit development technical support **Turn-key service** (For example: PKG assembly、Tape-reel、Drop-shipment...).

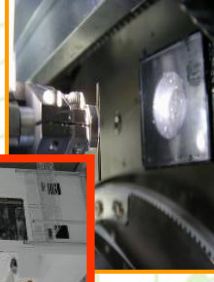
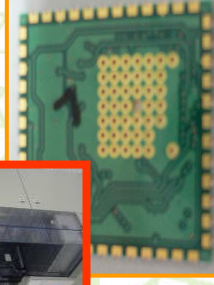
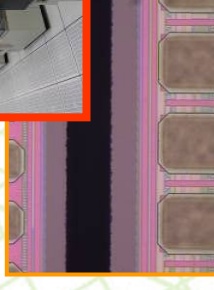
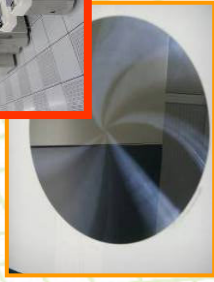
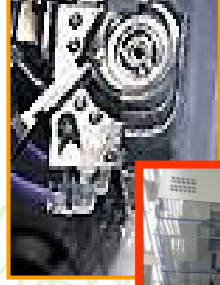
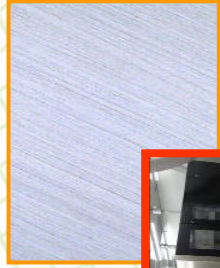
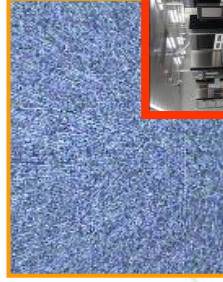


研磨、切割及挑檢代工服務

(Grinding, Sawing, P&P Service)

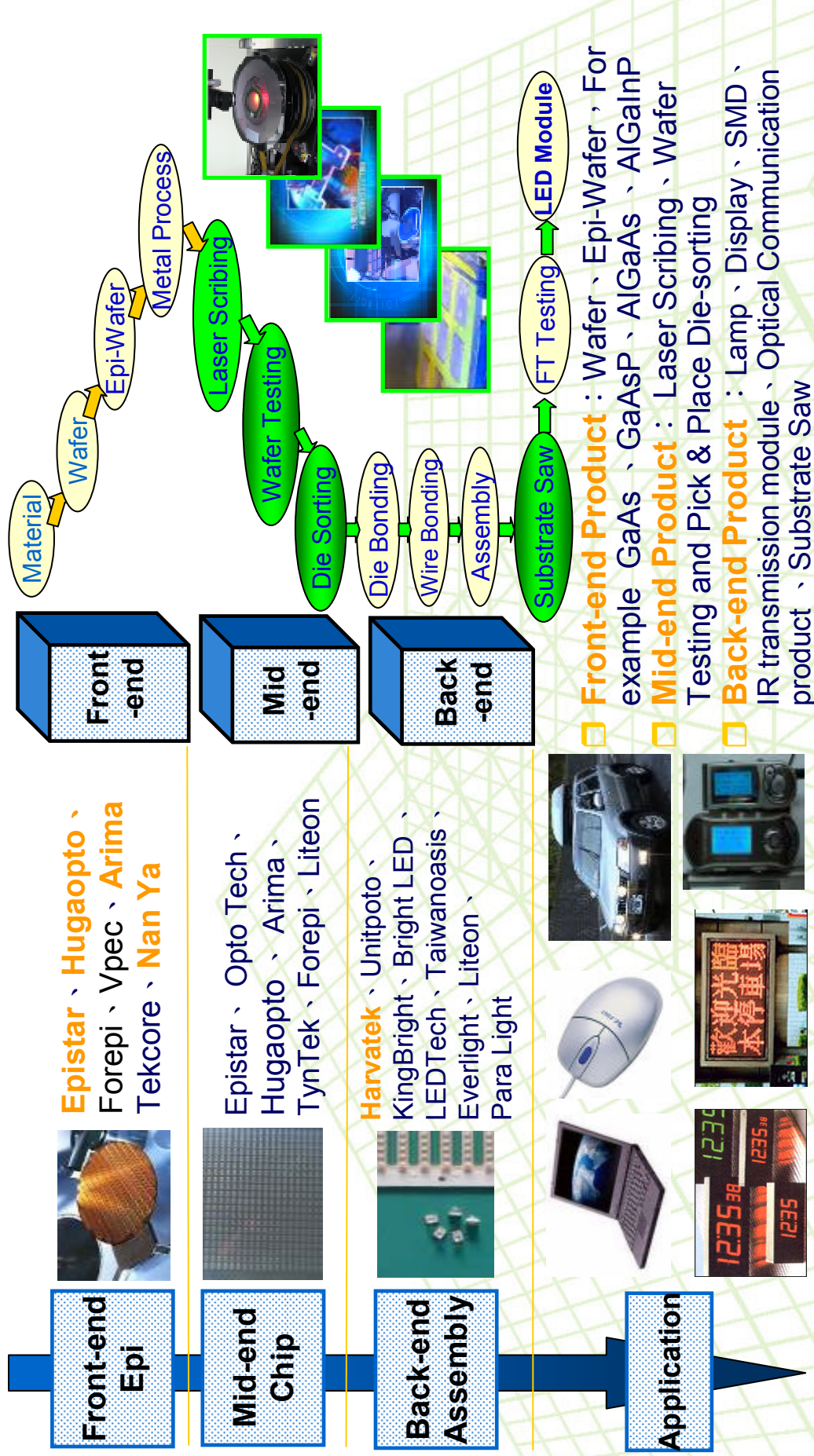
Company Profile

- ❑ IC Grinding、Sawing、Pick & Place
 - 4"~12" Wafer back-side grinding、sawing、chip pick & place services for Consumer and gold bump COG products。
 - Pick & Place Chip Back-side AOI inspection System inside。
- ❑ Substrate Sawing
 - LED package substrate、Glass substrate、Ceramic Substrate、Ceramic+FR4、Lead-frame、QFN package、HTCC、LTCC、PCB。



LED OEM Services

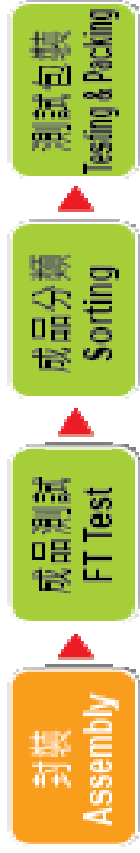
Company Profile



YoungTek Electronics Corp.

IC Testing Application Equipment

久元電子公司簡報



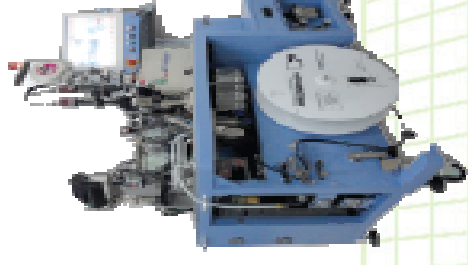
YTS100

全功能高速SoC IC
測試機



YT6100

Fat Type
IC測試分類機



YT6200

QFN測試包裝機



Scud-1A



YT5100 & Scud-1A IC Tester

Company Profile

YT5100 High Speed Soc IC Tester



Scud-1A Fully Auto IC Tester



YoungTek Electronics Corp.

Scud-1A IC Tester System Environment

Company Profile

The screenshots illustrate the comprehensive software environment for the Scud-1A IC Tester. Key components shown include:

- Main Control Interface:** Features a large grid for component placement and a circular test area.
- TEST PROGRAM ZIP2:** A dialog box for loading and configuring test programs.
- Load Form:** A window for loading test data, showing a list of components and their parameters.
- Test Data:** A window displaying a grid of test results for various components.
- Test Program:** A window showing a list of test items and their parameters.
- Test Results:** A window displaying a table of test results, including component ID, test item, and test status.
- Test Log:** A window showing a list of test logs and their details.
- Test Summary:** A window displaying a table of test results, including component ID, test item, and test status.
- Test Report:** A window displaying a table of test results, including component ID, test item, and test status.
- Test Summary:** A window displaying a table of test results, including component ID, test item, and test status.



YoungTek Electronics Corp.

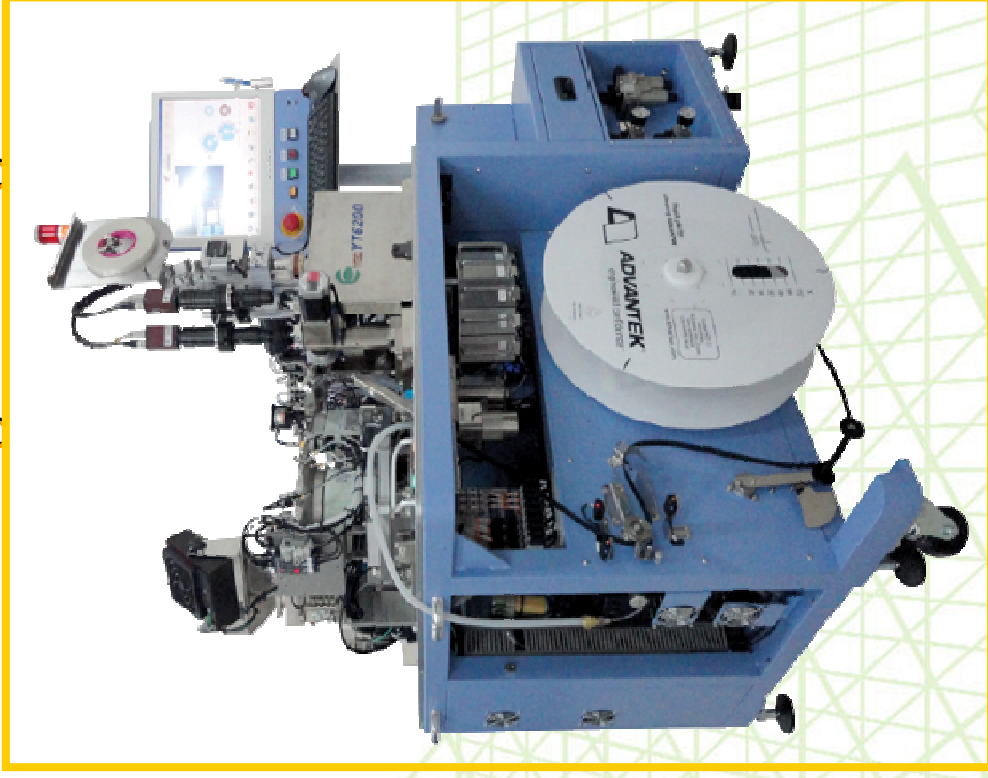
YT6110 IC Handler / YT6200 QFN Testing & Packing

久元電子公司簡報

YT6110 IC Handler



YT6200 QFN Testing&Packing

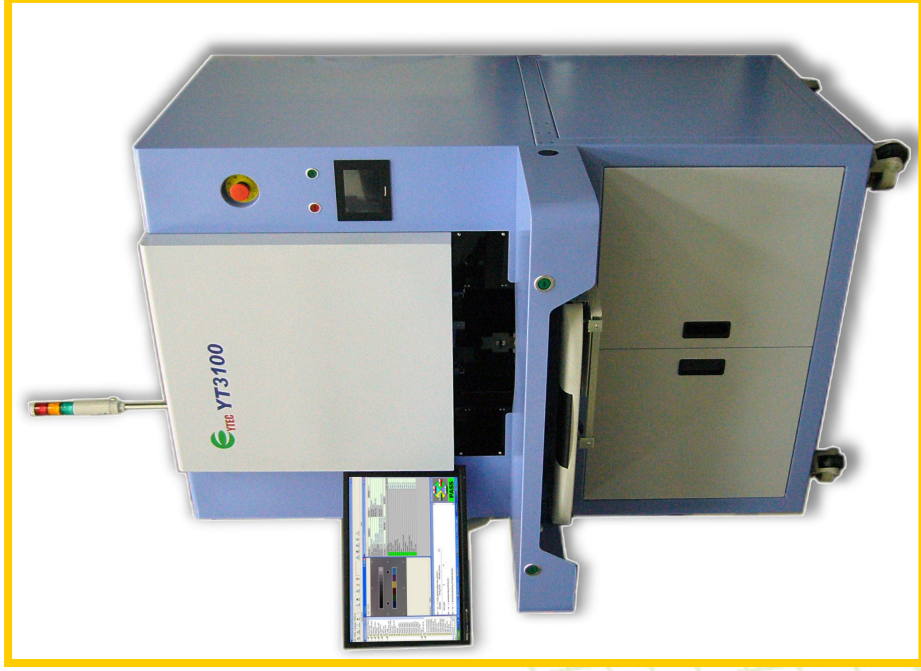


影像感測模組測試設備CCM(CMOS/Compact Camera Module)

久元電子公司簡報

影像感測模組測試設備

CCM YT3100



全自動影像感測模組測試設備

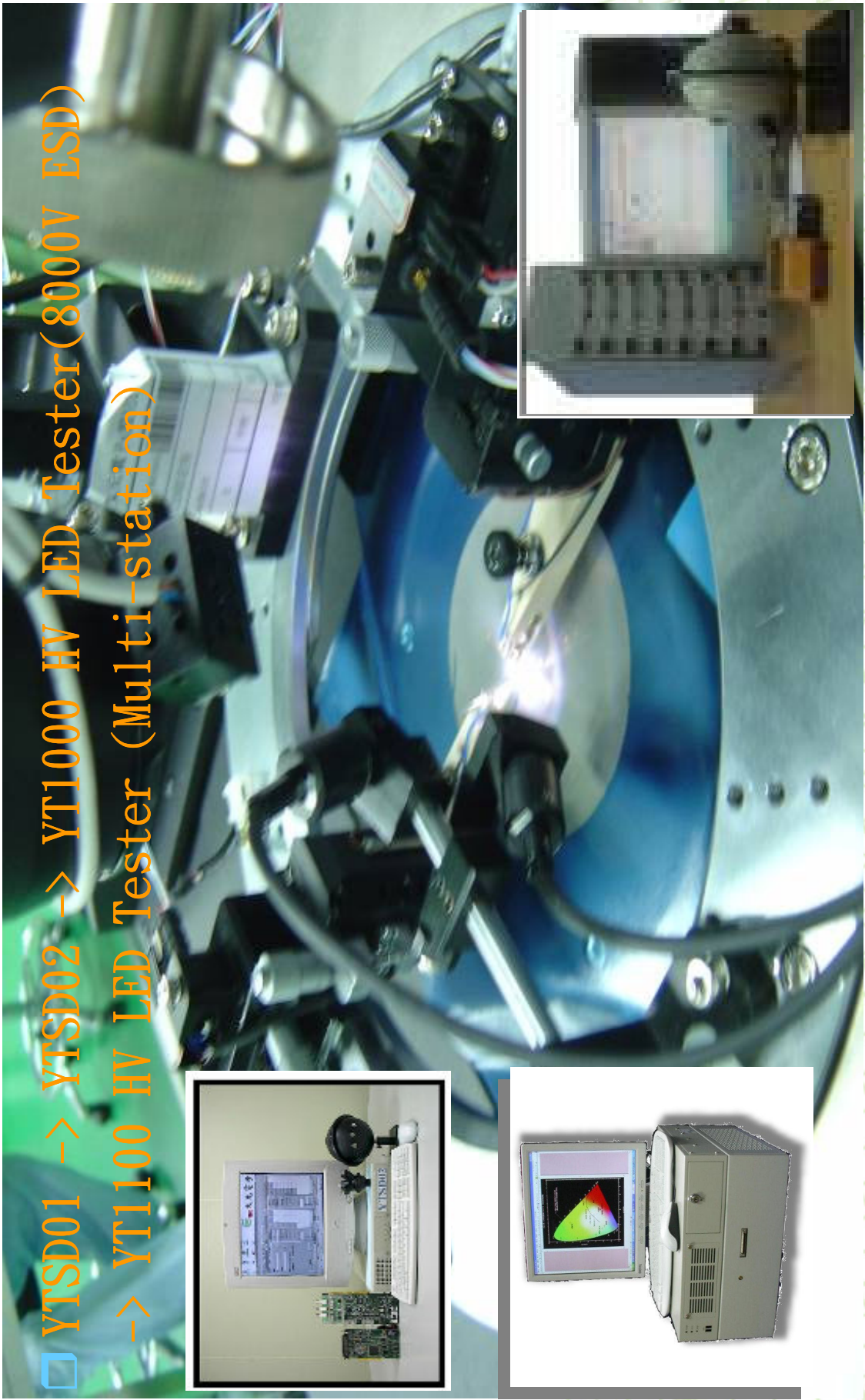
CCM YT3300



YT1100 LED Tester(YT1100 LED 測試機)

Company Profile

- YTSD01 -> YTSD02 -> YT1000 HV LED Tester(8000V ESD)
-> YT1100 HV LED Tester (Multi-station)



DB-260 LED Prober

久元電子公司簡報

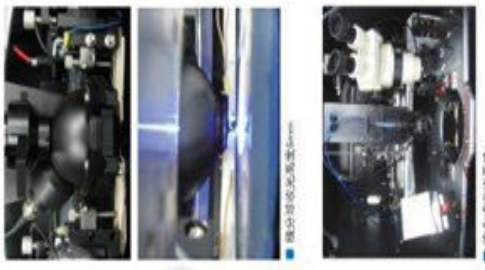
PB-260 LED Prober

PB-260 LED 晶粒檢測機 LED Chip Probe Station

自動換探針功能
針痕監控系統
晶粒外觀辨識功能

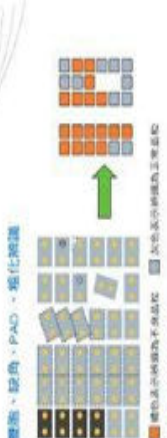


WECON
威控自動化
www.wecon.com.tw



● 晶粒外觀辨識功能

PB-260



- 特色：
- 自動換探針功能 (NEW)
 - 針痕監控系統 (NEW)
 - 針針高度辨識 (NEW)
 - 雙面、雙角、PAD、拖托辨識系統
 - 雙面半自動高度Zero
 - 自動校正起點點(Auto Alignment key System)
 - 標準的操作畫面
 - Z軸採用直立式螺桿驅動動態性高且穩定
 - 可依客戶需求，即時安裝積分球測顯儀或光系統
 - 機台提供固定座採用三軸精密鋼平台
 - 探針座使用快拆式底座，拆卸維護便利
 - 可供客戶需求搭配傳電或不傳電平台

規格(Specification)

Quick Probe	1.5mm x 1.5mm	針長	8.10"
Probe Size	4" MAX	針徑	0.50"
X-Y 軸行程	210mm X 470mm	針距	0.002"
X-Y 軸精度	± 1.0μm	針距精度	0.002"
X-Y 軸速度	0.0mm/0.001	針距速度	0.300"
Z 軸行程	1.0m	速度	400%
Z 軸精度	± 4.0μm	速度	AS KAPPA 2 / 48 078
Communication Interface	7Pin, RS232C	測顯儀	KEYENCE / LEICA / OHPA, BA
備註	● 1.5mm x 1.5mm, 0.5mm, 0.75mm height available	測顯儀	● 依客戶需求
	● Transfer and lower light		

威控自動化機械股份有限公司
WECON AUTOMATION CORP.
新竹市東區湖濱路127號
No.127, Alley 94, Puzin Rd., Hsinchu City, Taiwan
TEL:886-3-574151

www.wecon.com.tw

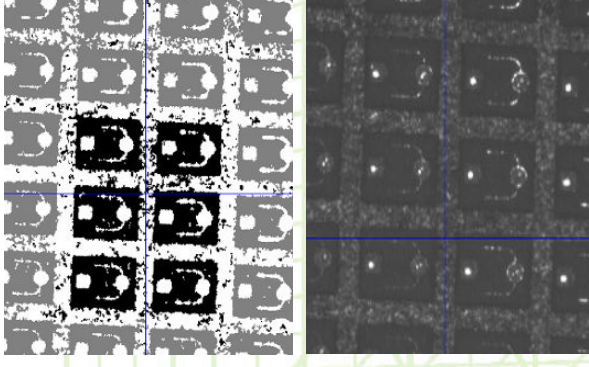
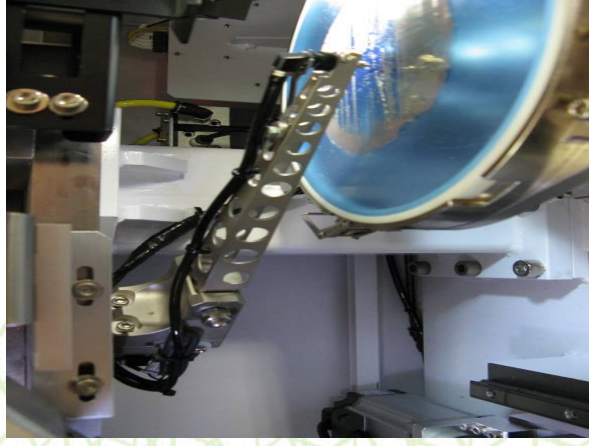
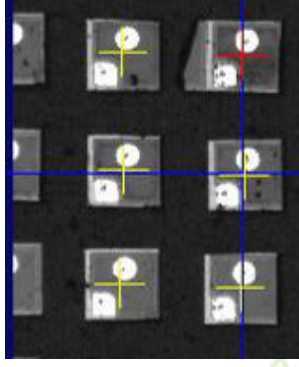


YoungTek Electronics Corp.

LS-360 LED Sorter

久元電子公司簡報

LS-360 LED Sorter



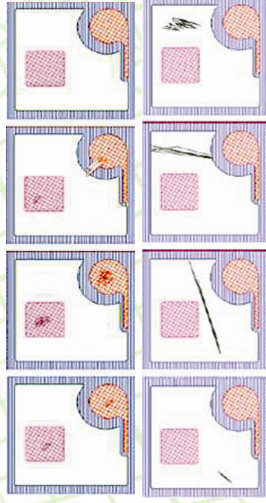
YoungTek Electronics Corp.

自動光學檢測系統 (Auto Optical Inspection)

久元電子公司簡報

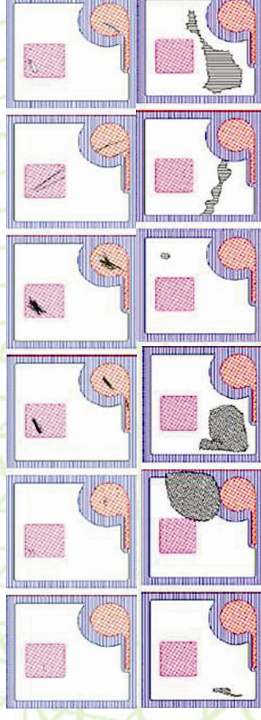
YT 5311 LED Chip/Wafer/Mask

半自動光學檢測系統



YT 2800 LED Chip/Wafer/Mask

全自動光學檢測系統



自動光學檢測應用(AOI Application)

久元電子公司簡報

被動元件、LED
產品六面外觀檢測



YT2300
元件六面外觀
檢測機

YT2330
雙面元件六面外觀
檢測機

LED及被動元件散熱基板
產品之外觀檢測



YT2700
LED及被動元件
散熱基板之2D AOI
檢測機



YT2705
LED及被動元件
散熱基板之2D AOI
檢測機
(Auto Load/Unload)



自動光學檢測系統 (Auto Optical Inspection)

久元電子公司簡報

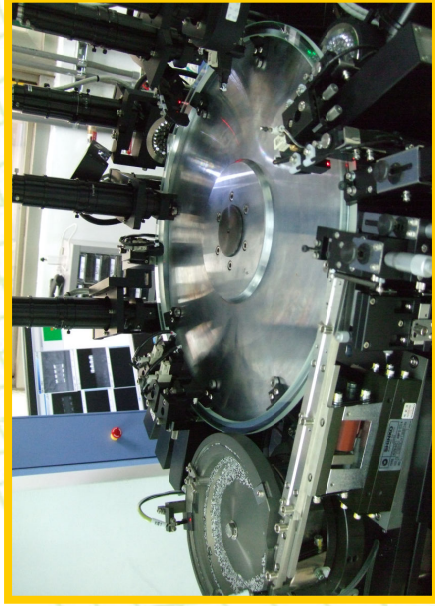
YT 2300(YT2330) Component AOI

自動光學檢測系統(雙軌)



Reel type taped products:

- Resistor
- Capacitor
- Inductor
- LED
- IC
- Relay
- Connector
- Fuse



LED Assembly Application Equipment

Company Profile

固晶
Die Bond



銲線
Wire Bond

YT2500
多站雙軌
LED點膠機

點膠
Dispense



剝料 / 下料
Stripping & Cutting

YT2300
元件六面外觀
檢測機



外觀篩選
AOI



測試分類
Testing & Sorting

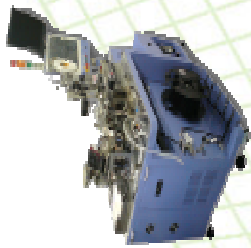
YT6400
LED測試分類機

包裝 / 捲帶
Tapping



出貨前檢查
Final Check

YT1100
高橋多站
平行LED測試機



YT6300
LED包裝機

YT2210
超薄元件
自動光學檢測機



YoungTek Electronics Corp.

DB-159 Die Bonder & YT2500 LED Dispenser

久元電子公司簡報

DB-159 Die Bonder

DB-159 泛用型高速固晶機
High Speed Multiple
Applications Epoxy Die Bonder

UPH 15K
Cyc. Time 230ms



超高速工作行程：120x280mm
頂針自動換高、防排設計
多種制程選擇
開放式參數設定

- 多種制程選擇
- ▶ 不同尺寸晶粒與晶粒間距
 - ▶ COC材料與入模與無模
 - ▶ 多晶粒固晶
 - ▶ 晶粒點固晶
 - ▶ 多晶粒有模固晶



多種制程選擇 (圖2)

▶ 可進行外模固晶
▶ 雙面、PAD固晶、雙面、雙模
▶ 氣壓固晶



具有防過、防漏膠功能
晶粒位置設定與本機之固晶器
相符合時，可選擇固定位置 (圖4)



晶粒位置調整正功能

規格(Specification)

機型名稱	DB-159	UPH	15K (UPH) (16000) 選擇：(最大UPH)
Die size	0.5mm - 1.0mm	Resolution	100/200/300um
Die pitch	0.5mm - 1.0mm	Die Feed	100/200/300um
Die type	Chip	Die Feed	100/200/300um
Die size	0.5mm - 1.0mm	Die Feed	100/200/300um
Die pitch	0.5mm - 1.0mm	Die Feed	100/200/300um
Die type	Chip	Die Feed	100/200/300um
Die size	0.5mm - 1.0mm	Die Feed	100/200/300um
Die pitch	0.5mm - 1.0mm	Die Feed	100/200/300um
Die type	Chip	Die Feed	100/200/300um

威控自動化機械股份有限公司
WECON AUTOMATION CORP.
台灣新竹縣新豐鄉新豐村27號
NO.27, Aike Rd, Neipu Twp, Hsinchu Co., Taiwan
TEL:886-3-573457 FAX:886-3-573416

www.wecon.com.tw

YT2500 LED Dispenser



YoungTek Electronics Corp.

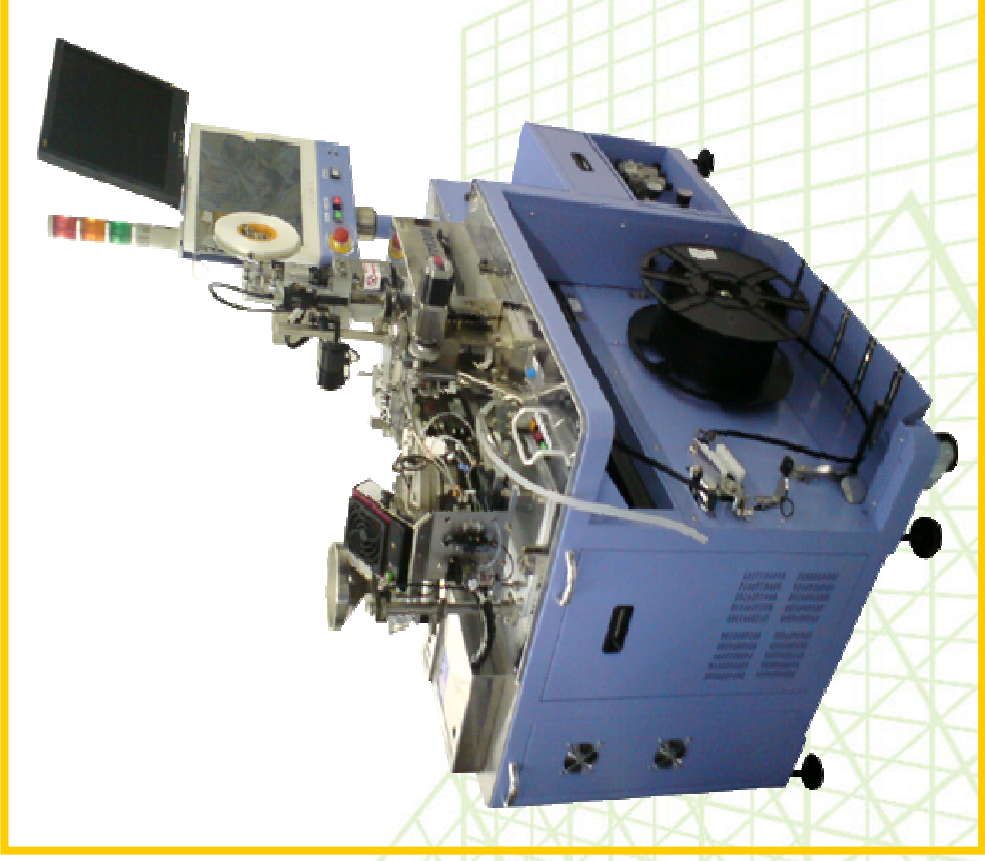
YT6400 LED Handler & YT6300 LED Tapping

久元電子公司簡報

YT6400 LED Handler



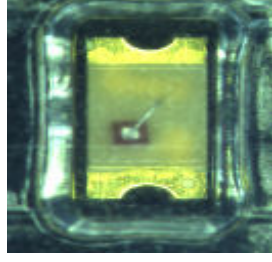
YT6300 LED Tapping



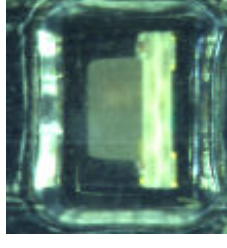
自動光學檢測系統 (Auto Optical Inspection)

久元電子公司簡報

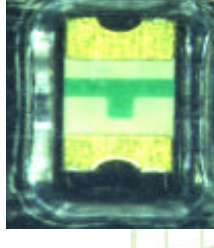
YT 2210 Reel Type Components 自動光學檢測系統



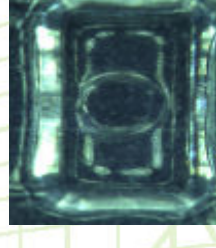
Polarity inverse package



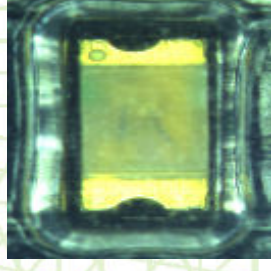
Tilt



Over turn



Empty

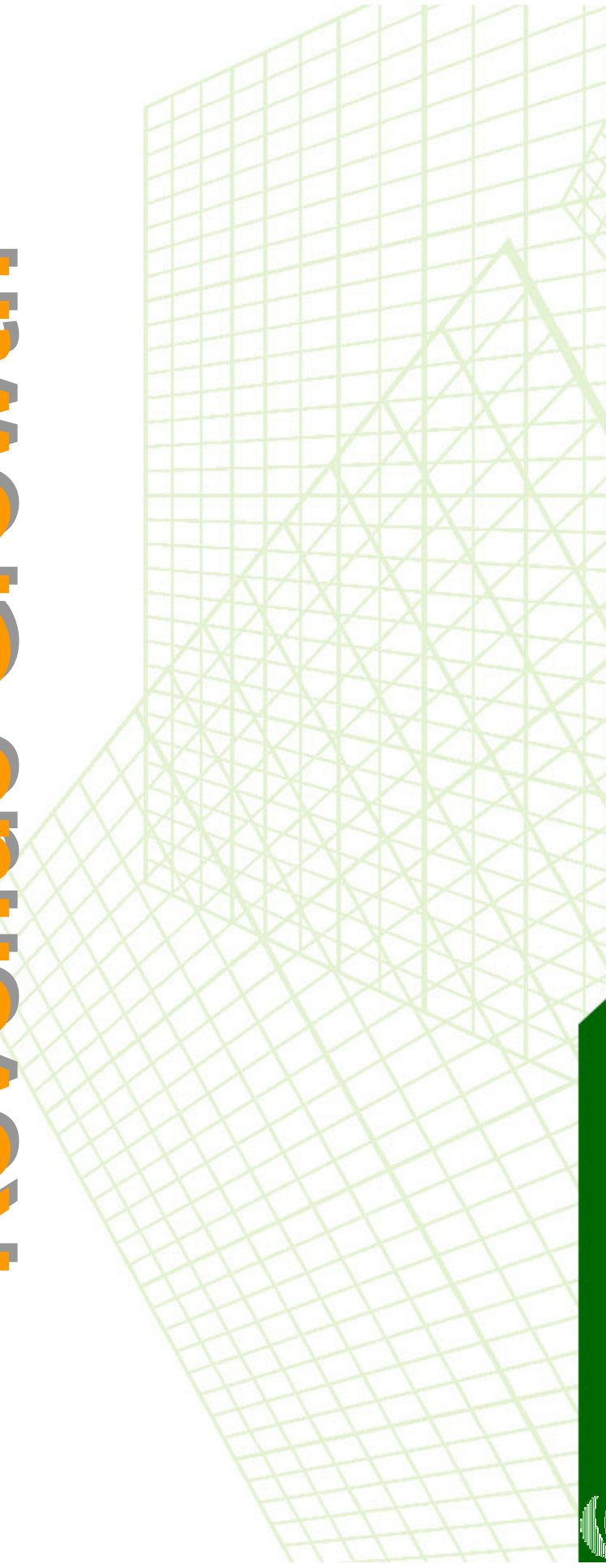


Mixed package



Company Profile

Revenue Growth



YTEC YoungTek Electronics Corp.

2011&2012 Monthly Revenue

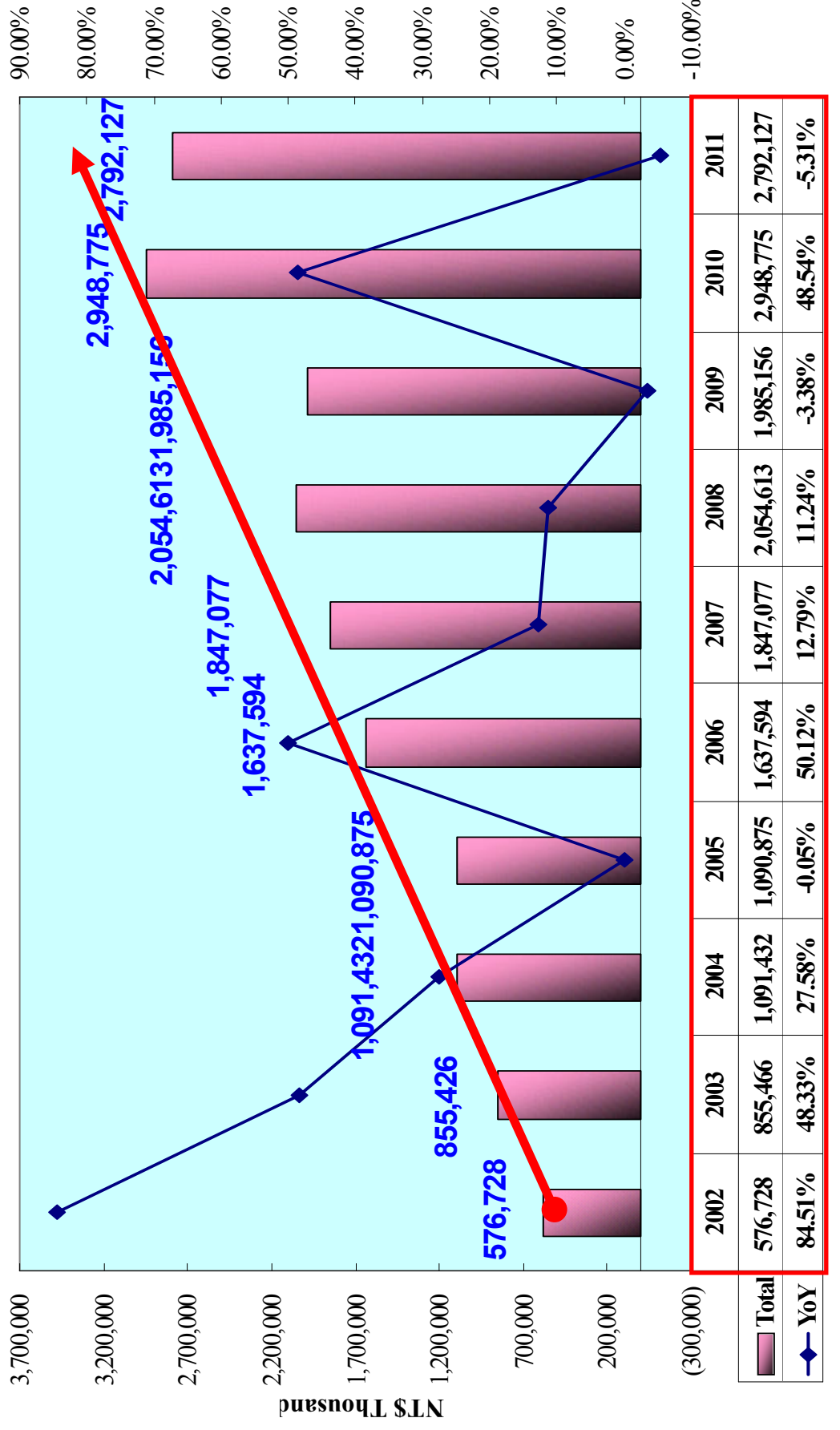
Company Profile
NTS(Thousand)

Business Item/Month	Jan.	Feb.	Mar.	Apr.	May	Jun.	Jul.	Aug.	Sep.	Oct.	Nov.	Dec.	Total	Share(%)	
切磨拋檢代工 Sawing & Sorting OEM	2011	99,641	107,086	131,677	124,662	130,566	127,673	103,794	98,761	94,537	89,523	81,498	1,052,685	47.18%	
	2012	73,439	97,671	111,018	115,277	119,238	121,988	111,306	115,728				987,133	42.44%	
	YoY	-26.30%	-8.79%	-15.69%	-7.53%	-8.68%	-5.71%	-4.45%	7.24%	17.18%				-6.23%	
	MoM	-9.89%	33.00%	13.67%	3.84%	3.44%	1.87%	0.43%	-8.76%	3.97%					
測試代工 Testing OEM	2011	80,684	66,395	115,541	101,928	110,180	85,536	90,520	78,549	86,727	91,049	86,508	815,475	36.55%	
	2012	95,751	101,493	117,892	115,043	125,708	146,328	129,752	126,422				1,091,474	46.93%	
	YoY	18.67%	52.86%	2.03%	12.87%	14.09%	54.49%	71.07%	43.34%	60.95%				33.85%	
	MoM	10.68%	6.00%	16.16%	-2.42%	9.27%	5.87%	9.95%	-11.33%	-2.57%					
機器組裝等產品銷售 Own Product Sales	2011	29,417	49,923	58,053	47,824	46,144	48,591	28,812	19,012	14,722	5,740	10,482	363,181	16.28%	
	2012	5,011	5,077	21,899	29,823	83,454	39,695	32,838	12,097	17,374			247,268	10.63%	
	YoY	-82.97%	-89.83%	-62.28%	-37.64%	80.86%	12.12%	-32.42%	-58.01%	-8.62%				-31.92%	
	MoM	-52.19%	1.32%	331.34%	36.18%	179.83%	-52.43%	-17.27%	-63.16%	43.62%					
營業收入淨額 (Unit:K)	2011	209,742	223,404	305,271	274,414	286,890	250,372	261,800	223,126	196,322	186,312	178,488	2,231,341	100.0%	
	2012	174,201	204,241	250,809	260,143	328,400	294,248	301,154	253,155	259,524	0	0	2,325,875	100.0%	
	YoY	-16.95%	-8.58%	-17.84%	-5.20%	14.47%	17.52%	15.03%	13.46%	32.19%				4.24%	
	MoM	-2.40%	17.24%	22.80%	3.72%	26.24%	-10.40%	2.35%	-15.94%	2.52%					
營業收入淨額(美元) Sales Revenue (Total)	2011	209,742	433,146	738,417	1,012,831	1,299,721	1,550,093	1,811,893	2,035,019	2,231,341	2,427,327	2,613,639	--	--	
	2012	174,201	378,442	629,251	889,394	1,217,794	1,512,042	1,813,196	2,066,351	2,325,875					
	YoY	-16.95%	-12.63%	-14.78%	-12.19%	-6.30%	-2.45%	0.07%	1.54%	4.24%					
	MoM	180,325	173,481	247,218	226,590	240,746	214,967	213,209	194,314	177,310	181,264	180,572	168,006	1,868,160	
總計代工成長 OEM Growth (Total)	2011	169,190	199,164	228,910	230,320	244,946	254,553	268,316	241,058	242,150			2,078,607		
	2012	169,190	199,164	228,910	230,320	244,946	254,553	268,316	241,058	242,150			2,078,607		
	YoY	-6.17%	14.80%	-7.41%	1.65%	1.74%	18.41%	25.85%	24.06%	36.57%				11.26%	
	MoM	0.70%	17.72%	14.94%	0.62%	6.35%	3.92%	5.41%	-10.16%	0.45%					



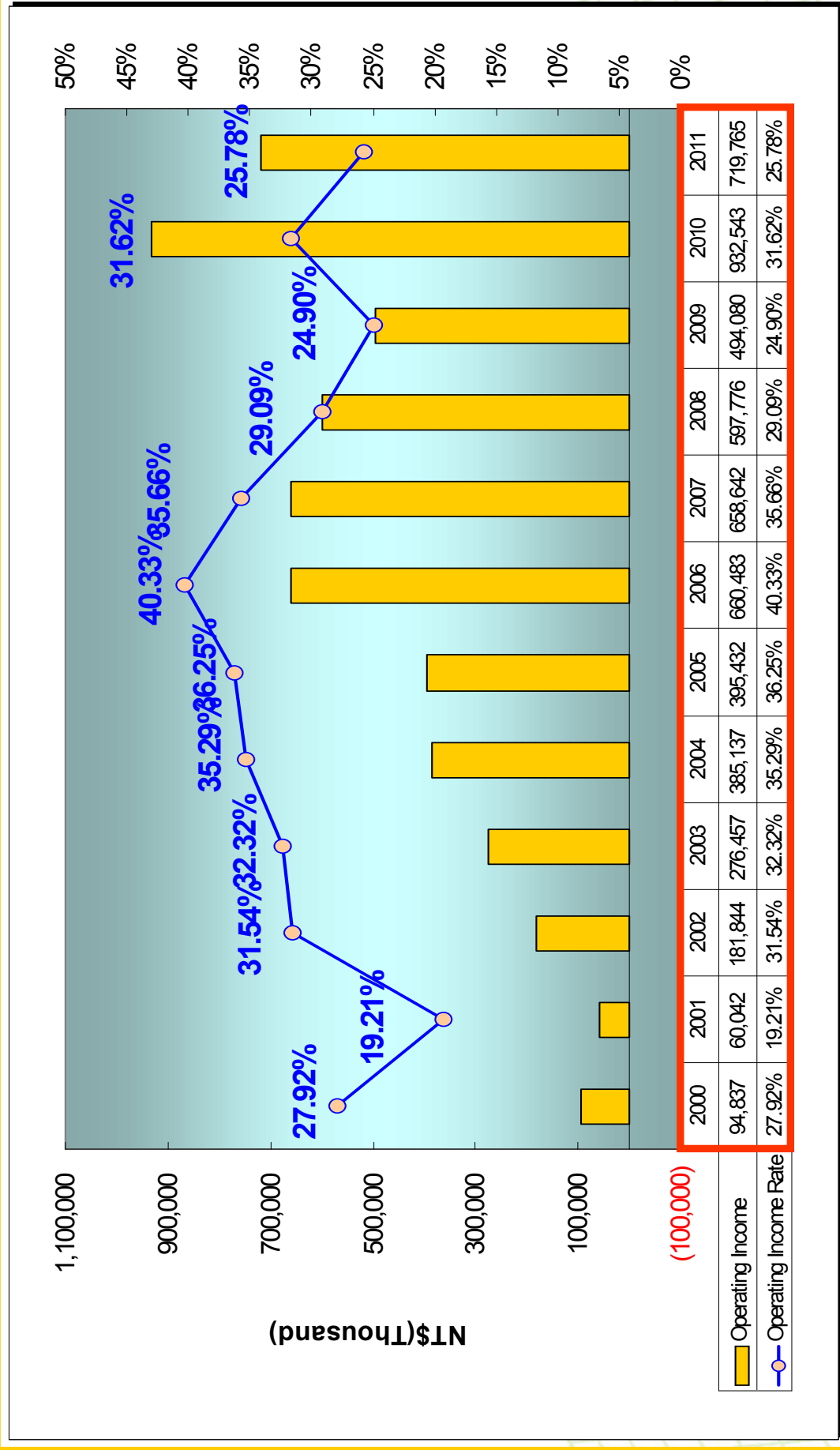
2002~2011 Revenue Growth

Company Profile



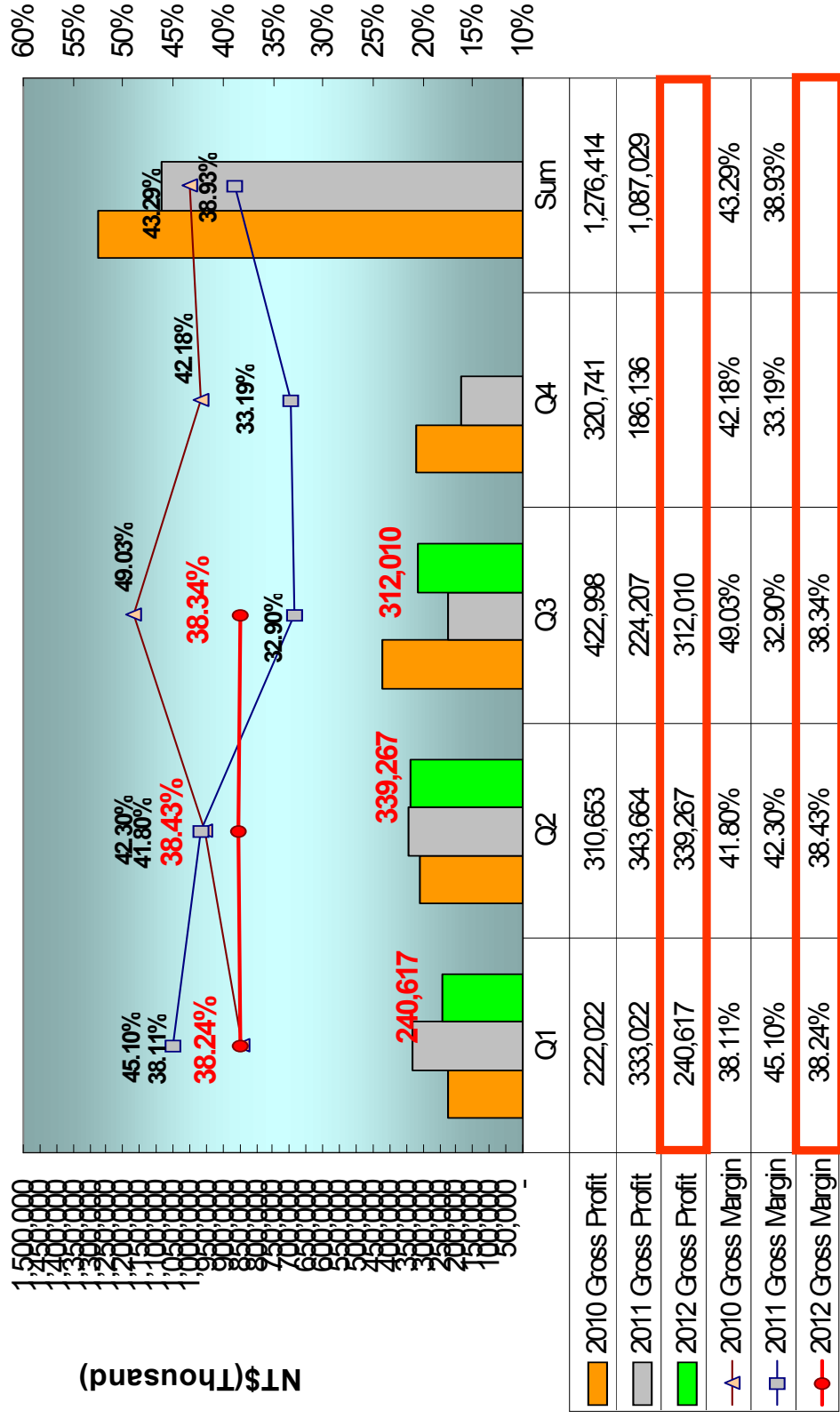
2000~2011 Operating Income

Company Profile



2010~2012 Gross Profit

Company Profile



Business Expansion Status(相關產業之狀況)

Company Profile

- 半導體及光電切挑代工服務：進入2012年9月份業績、YOY成長17.18%、MOM成長3.97%符合預期、因此將持續追蹤、另LED在新的應用提昇下樂觀預期在LED挑檢已擴充之產能應可適時提供市場成長之需求、相信可挹助公司之營收成長。
- IC測試系統開發：2006年3月份與美商安捷倫(Agilent)科技(新公司名稱: Verigy惠瑞捷)簽訂IC測試系統技術合作、除了2006年已陸續支付久元簽約金而達成階段性目標、因而提昇公司營收和獲利。另在雙方合作互動下已提昇測試機技術層次及銷售量、更上層樓。
- CIS、CCM、LED後段生產設備及AOI設備開發：成功開發完成CIS(CMOS影像感測系統)、具備高速影像處理及完整電性測試之解決方案、並導入代工服務、挹助營收。自行開發之CCM(影像感測模組測試設備)、LED後段生產設備及AOI(自動光學檢測系統)等設備、因應市場需求將擴展銷售、AOI設備研發係以解決半導體及光電等產業在目檢之視覺盲點並可大幅節省人力、並已將光電技術結合影像分析等與自動化設備設計、成功研發出各類型外觀檢測機。
進入2012年9月份業績、MOM成長43.62%、符合預期因此將持續追蹤、相信在持續開發新產品及功能提昇下、展望未來應可持續挹助業績成長之動力。
- 半導體代工服務：進入2012年9月份業績YOY成長60.95%、符合預期、因此將持續追蹤、而YTEC在持續開發新產品與互補及平衡的產品線發酵下(如LCD,CIS,RF...etc)、展望未來應可持續挹助業績成長之動力。



Share payout composition and history

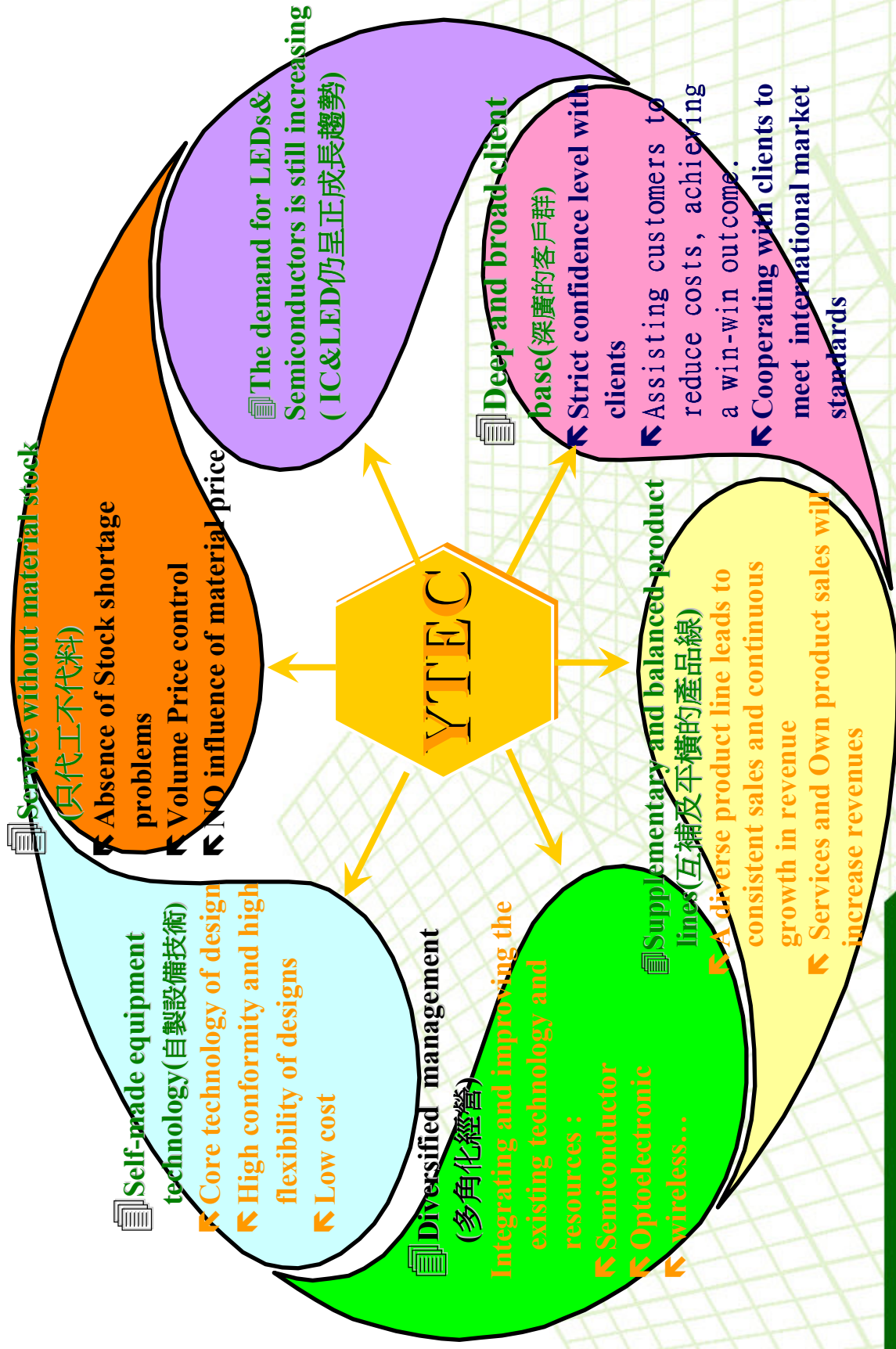
Company Profile

Year	93年度 (2004)	94年度 (2005)	95年度 (2006)	96年度 (2007)	97年度 (2008)	98年度 (2009)	99年度 (2010)	100年度 (2011)	101年度 (2012)
	酉巳2年度 Profit(2003)	酉巳3年度 Profit(2004)	酉巳4年度 profit(2005)	酉巳5年度 Profit(2006)	酉巳6年度 Profit(2007)	酉巳7年度 Profit(2008)	酉巳8年度 Profit(2009)	酉巳9年度 Profit(2010)	酉巳00年度 Profit(2010)
Cash(NID)	\$3.00	\$3.00	\$2.61	\$4.00	\$4.00	\$3.00	\$3.00	\$4.671	\$5.238
Free Pair stock of	\$2.00	\$2.00	\$0.87	\$1.00	\$0.50	\$0.10	\$0.10		
Stock Capital reserve fund	--	-	-	--	--	-	-	\$0.093	\$0.095
EPS(NID)	\$7.28	\$8.24	\$5.56	\$8.61	\$7.41	\$6.09	\$4.07	\$8.53	\$6.68



Company competitive advantages

Company Profile

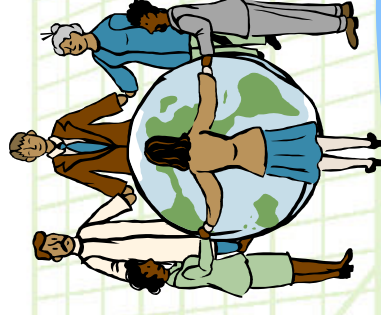


公司願景Company Mission

Company Profile

著眼於國內外市場的開拓，讓久元成爲立足台灣
的整合性後段IC及LED代工服務廠，並朝放眼
世界的自有產品、自有品牌邁進。

Based on the domestic and international marketing development, YTEC has gotten a foothold as an integrated back-end IC&LED OEM factory. YTEC moves forward, with it's own products, and Own Bench Marks.



Q & A

Company Profile

Thank you very much



YoungTek Electronics Corp.