

YoungTek Electronics Corp.

Stock No: 6261

Brief Introduction

Date : 18 December, 2012



Contents

Company Profile

- **Brief Introduction**
- **Factory Overview**
- **Company Milestone**
- **Company Management Concept**
- **OEM Services**
- **R&D Roadmap and Own Product Development**
- **Revenue Growth**
- **Company Mission**



YTEC *YoungTek Electronics Corp.*

Brief Introduction

Company Profile

Found Time : 1991/July

Chairman : Bily Wang

President of Service Group : Jeff Chang

President of Own Product Group : Glen Chen

Employees : 1005 persons

Capital : NTD 1142million (USD 39.2 million)

Factories : **Plant 1 :** Special & substrate sawing

SBIP Plant : IC back-end turn-key service, ATE&AOI

Li Hsin Plant : LED back-end turn-key service

An Ping Plant : LED Testing & sorting

Xiamen/Changzhou Plant : LED Testing & sorting

CRT (Shenzhen) Plant : IC Testing & sorting

WuJiang MightYtek Plant : IC Assembly

Business Items :

1.Semiconductor and LED OEM: IC testing, wafer sawing, grinding, chip sorting and LED testing, laser scribing, sorting and substrate sawing.

2.Design, manufacture and sales of semiconductor equipments: Full-function IC tester, logic ,analog, Mixed-Signal IC Tester ,IC handler, **LED** tester, prober ,Handler and sorter, LED dispenser. CCM equipments, AOI system.



YoungTek Electronics Corp.

Factory Overview

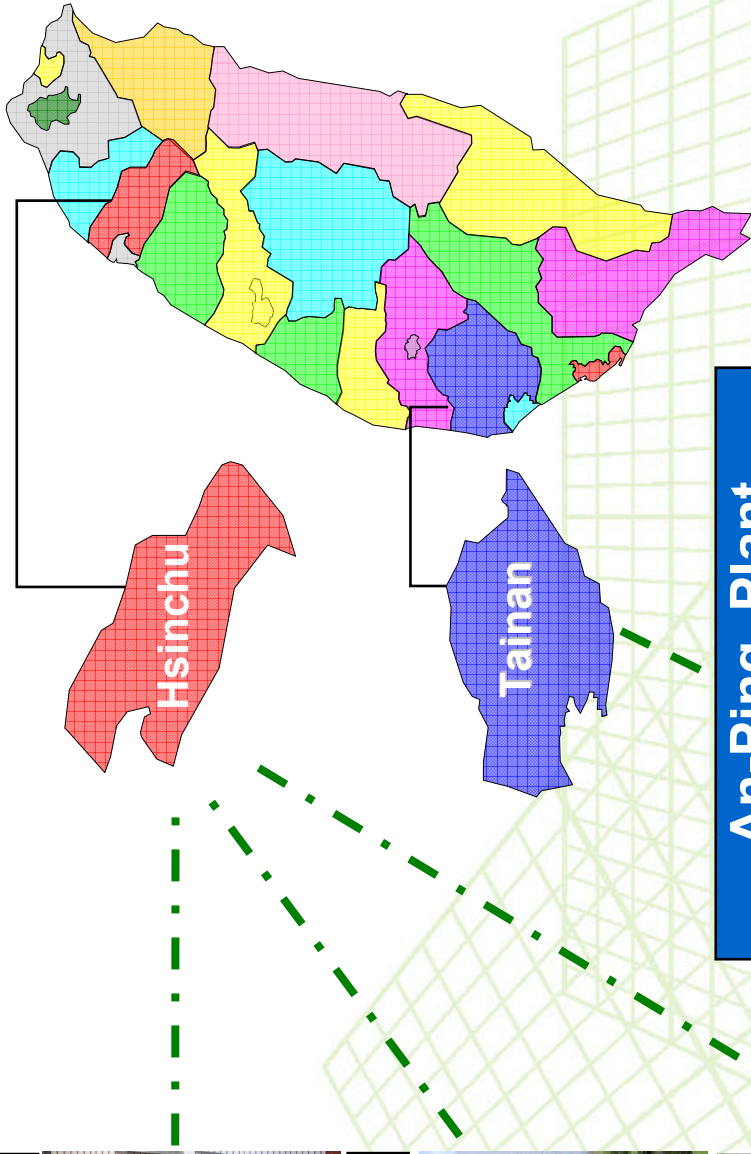
Company Profile



SBIP Plant



Li-Hsin Plant



An-Ping Plant



YoungTek Electronics Corp.

Factory Overview

Company Profile

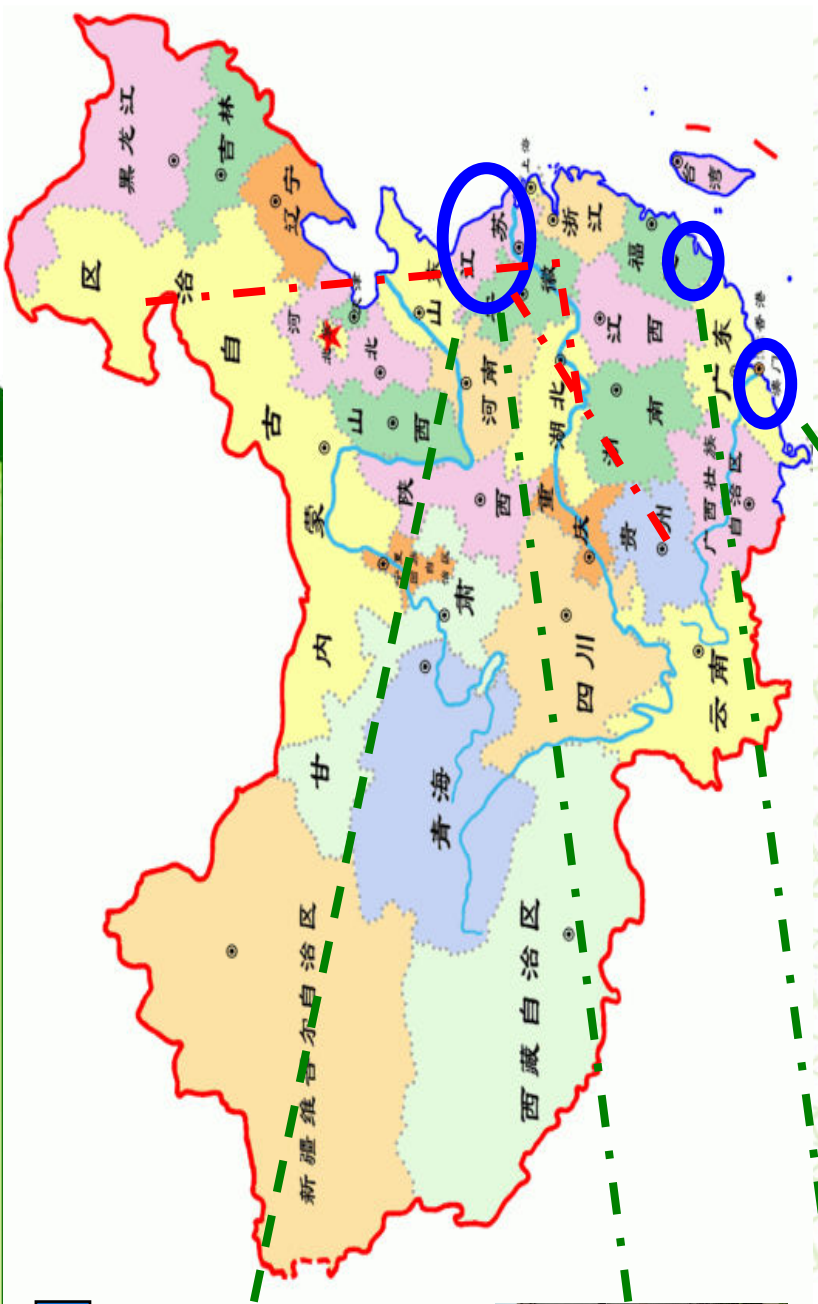
Changzhou YT Plant



Wujiang MightYtek Plant



Xiamen YT Plant



CRT (Shenzhen) Plant



YoungTek Electronics Corp.

Company Milestone

Company Profile

- 1991/Jul.** YTEC was founded and the capital is NTD \$ 5 million.
- 1998/Oct.** Develop logic tester (Goblin) with 5 MHz/40 pins.
- 2000/Mar.** Achieved the certification of ISO 9001
- 2000/Jul.** Full-function IC tester was verified by industry agency with predominant product development project.
- 2002/Nov.** SEC (Securities and Exchange Commission) approve YTEC to public stock.
- 2003/Nov.** LED OEM service was established.
- 2003/Dec.** Obtain OTC certification.
- 2004/Mar.** Got the approval to establish the branch in Hsin chu SBIP.
- 2004/Mar.29** Listed in Taiwan stock exchange. (Stock No.: 6261)
- 2006/Mar.** Signs the cooperation agreement of the IC test system technology. with Agilent Technologies
- 2006/Dec.** Achieved the certification of ISO 14001 and OHSAS 18001.
- 2007/Jul.** Develop Tainan An Ping plant for LED sorting.
- 2008/May** Develop Li Hsin plant for LED test & sorting.
- 2008/Oct.** Achieved the certification of ISO/TS 16949.
- 2009/May.** To establish the Xiamen Young Tek Electronics Co., Ltd. to provide the LED Backend Turn-key service.
- 2009/Jun.** Solar silicon substrate inspection system was verified Science Park Administration with development project.
- 2010/Mar.** Develop SBIP plant for wafer grinding & sawing.
- 2010/Sep.** To establish the Changzhou YoungTek Electronics Co., Ltd. to provide the LED Backend Turn-key service.
- 2011/Jan.** Achieved the certification of IECQ QC080000.
- 2011/Dec.** To establish the WuJiang MightYtek Semiconductor Co., Ltd. to provide the Semiconductor Backend Testing & Ass'y Turn-key service.
- 2012/Feb.** To establish the Shenzhen Clear Rich Tech. Co., Ltd. to provide the Semiconductor Backend Testing service.
- 2012/May.** Signs the cooperation memorandum, the expansion related marketing functions Development with Yoshikawa Semiconductor Co., Ltd.



Company Management Concept

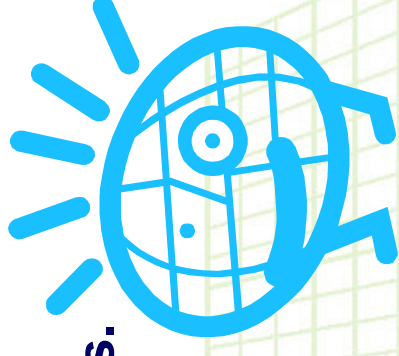
Company Profile

經營理念：(Management Concept)

主人翁經營理念；下工程即是客戶。

Treat YTEC as your own company. (Host concept)

Treat all post projects and processes as our customers.



工作態度：(Working Attitude)

成功者找方法；失敗者找藉口。

A successful person will find the way to overcome a challenge

Loser finds excuses.

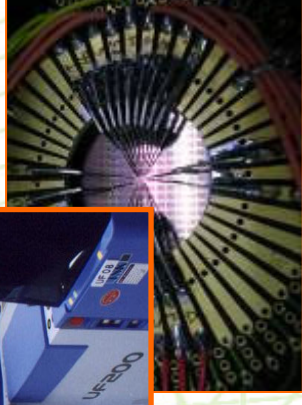
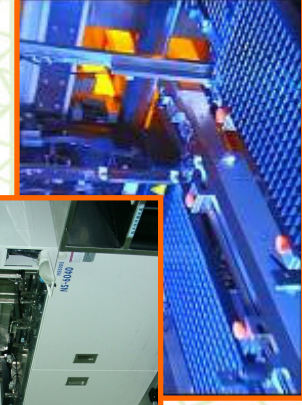
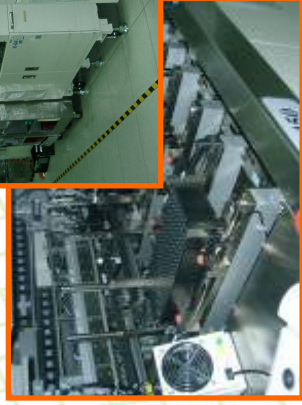
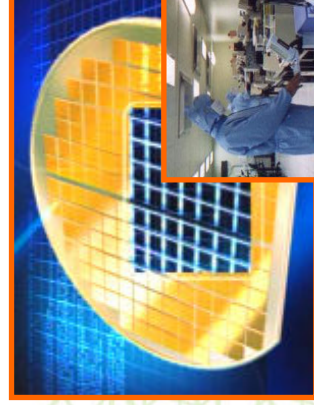
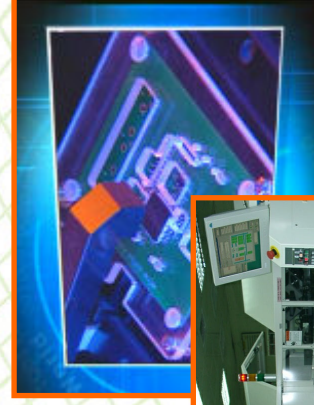
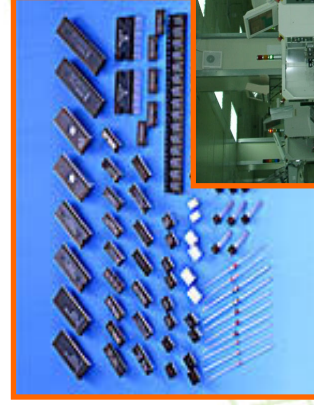


YTEC YoungTek Electronics Corp.

專業測試代工服務(IC Testing OEM)

Company Profile

- ❑ 4"~12" Wafer testing (CP)、Test program and test kit development (Probe-card design and manufacture).
- ❑ IC packaging testing (FT)、Package type : DIPs、T/SOPs、L/QFPs、QFN、L/BGA...
- ❑ PC peripheral product、Logic、Analog、Mixed-signal、No-volatile memory、MCU、LCD driver IC、High speed/ High pin count (Scud-1A 512C) testing.
- ❑ CIS(CMOS Image Sensor)、RF、SoC product testing
- ❑ Others : Laser trimming、Lead scanning、Test program and test kit development technical support **Turn-key service** (For example: PKG assembly、Tape-reel、Drop-shipment...).

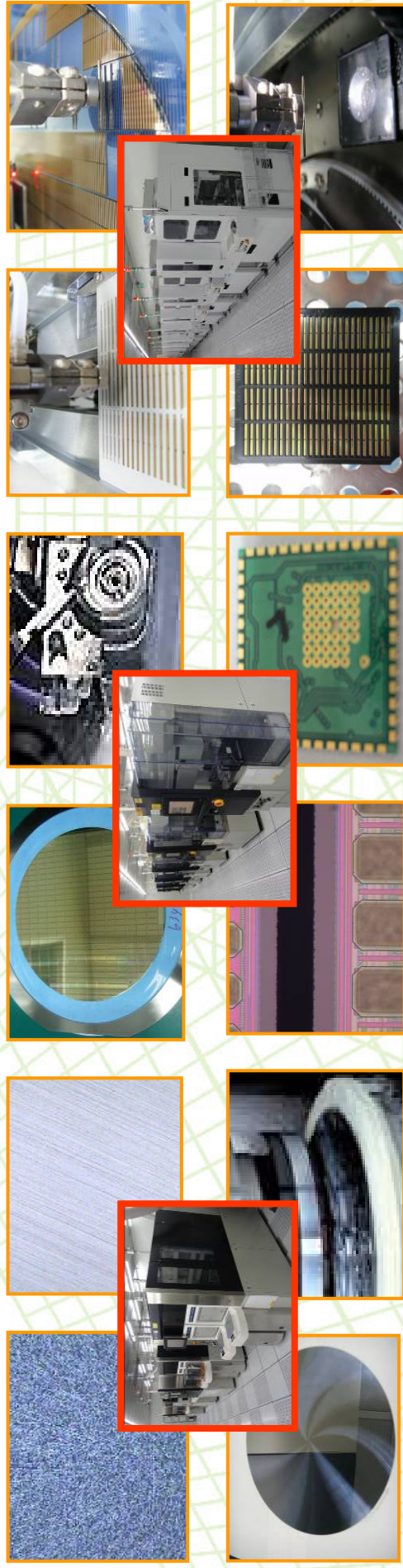


研磨、切割及挑檢代工服務

(Grinding, Sawing, P&P Service)

Company Profile

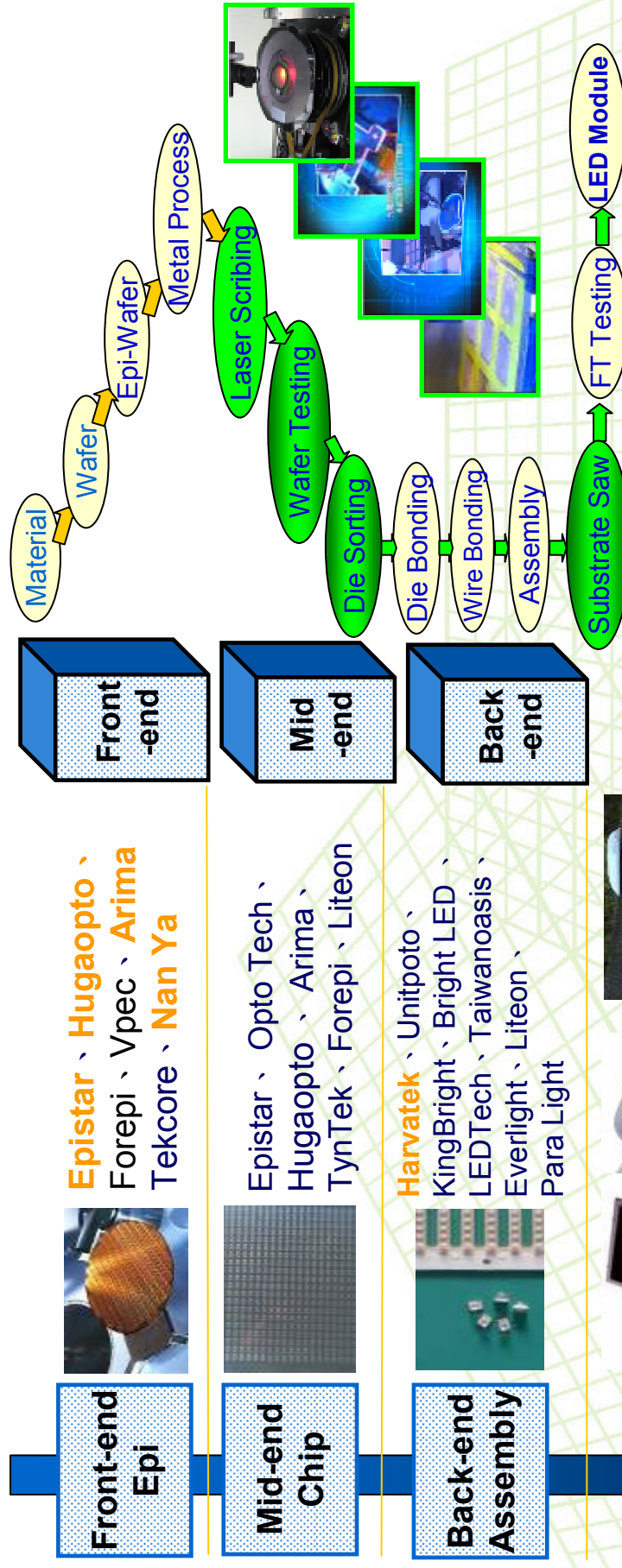
- ❑ IC Grinding、Sawing、Pick & Place
 - 4"~12" Wafer back-side grinding、sawing、chip pick & place services for Consumer and gold bump COG products。
 - Pick & Place Chip Back-side AOI inspection System inside。
- ❑ Substrate Sawing
 - LED package substrate、Glass substrate、Ceramic Substrate、Ceramic+FR4、Lead-frame、QFN package、HTCC、LTCC、PCB。



YoungTek Electronics Corp.

LED OEM Services

Company Profile



- **Front-end Product** : Wafer, Epi-Wafer, For example GaAs, GaAsP, AlGaAs, AlGaInP
- **Mid-end Product** : Laser Scribing, Wafer Testing and Pick & Place Die-sorting
- **Back-end Product** : Lamp, Display, SMD, IR transmission module, Optical Communication product, Substrate Saw

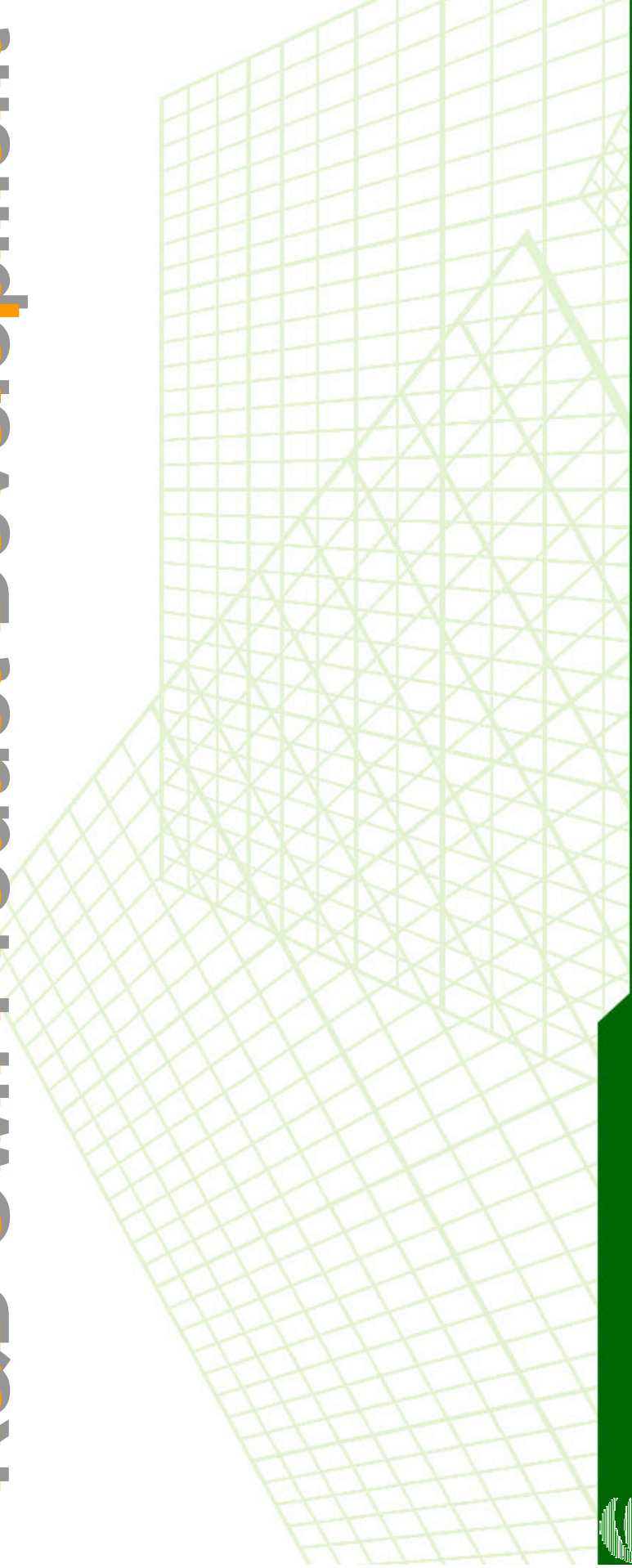


YoungTek Electronics Corp.



Company Profile

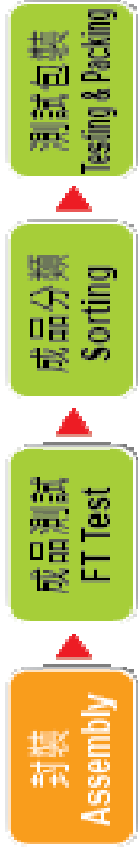
R&D Own Product Development



YoungTek Electronics Corp.

IC Testing Application Equipment

久元電子公司簡報



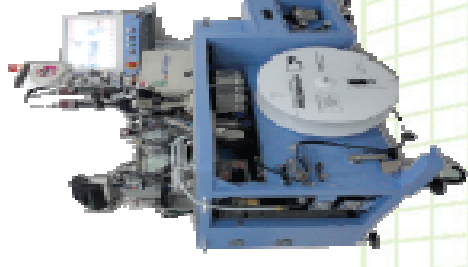
YTS100

全功能高速SoC IC
測試機



YT6100

Fat Type
IC測試分類機



YT6200

QFN測試包裝機



Scud-1A



YoungTek Electronics Corp.

YT5100 & Scud-1A IC Tester

Company Profile

YT5100 High Speed Soc IC Tester



Scud-1A Fully Auto IC Tester



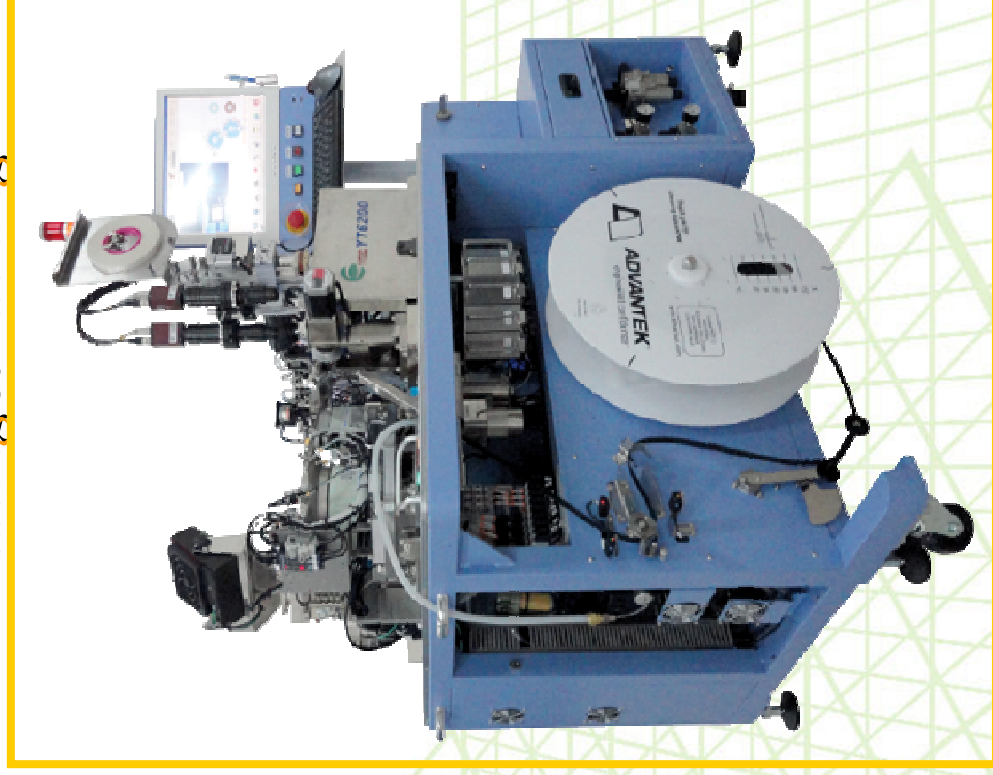
YT6110 IC Handler / YT6200 QFN Testing & Packing

久元電子公司簡報

YT6110 IC Handler



YT6200 QFN Testing&Packing



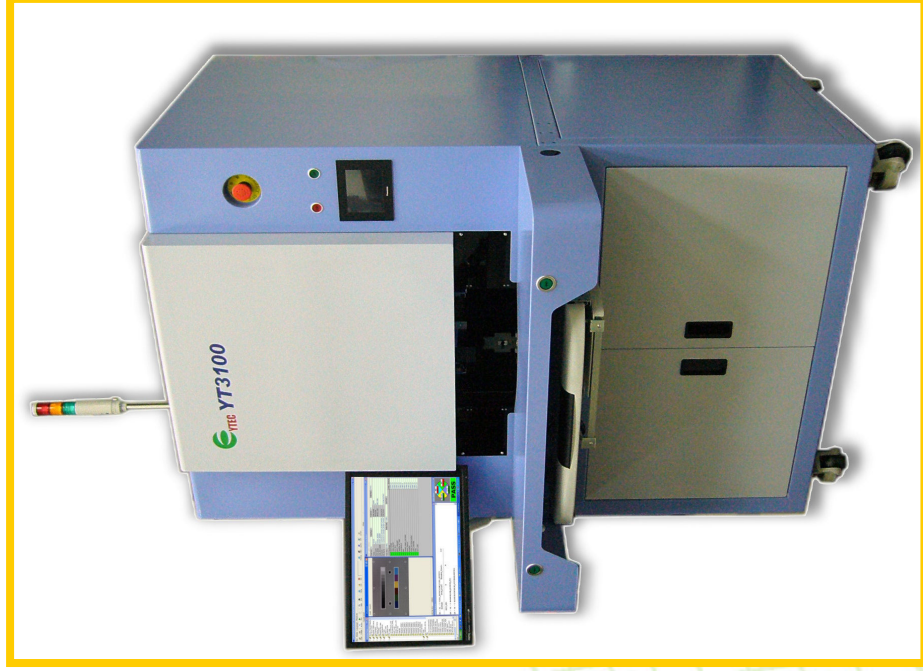
YoungTek Electronics Corp.

影像感測模組測試設備 CCM(CMOS/Compact Camera Module)

久元電子公司簡報

影像感測模組測試設備

CCM YT3100



全自動影像感測模組測試設備

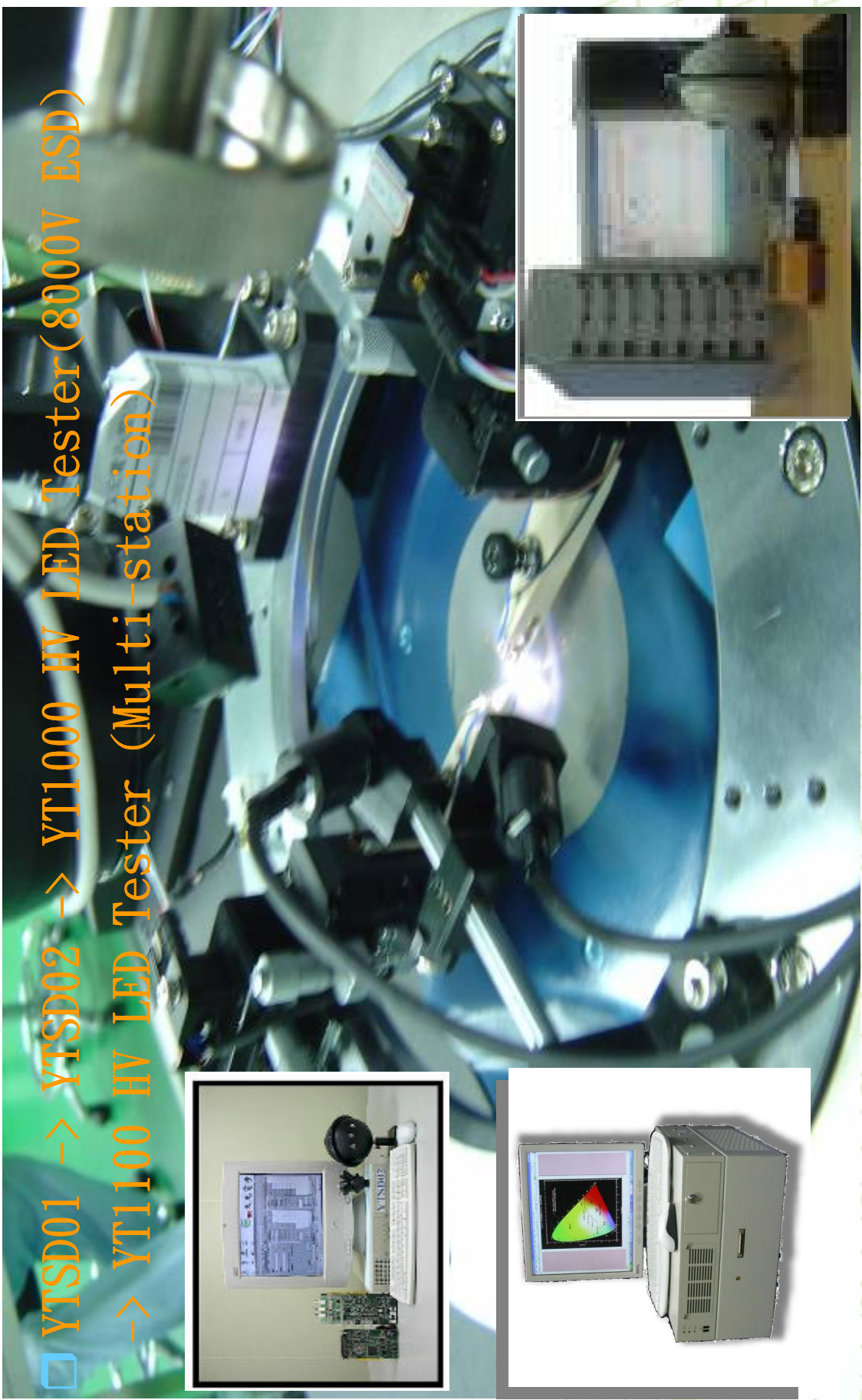
CCM YT3300



YT1100 LED Tester(YT1100 LED 測試機)

Company Profile

- YTSD01 -> YTSD02 -> YT1000 HV LED Tester(8000V ESD)
-> YT1100 HV LED Tester (Multi-station)



YoungTek Electronics Corp.

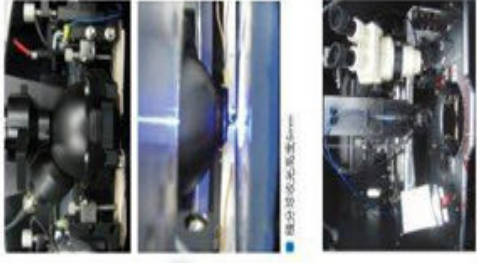
DB-260 LED Prober

久元電子公司簡報

PB-260 LED Prober

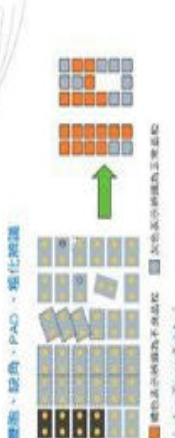
PB-260 LED 晶粒檢測機 LED Chip Probe Station

自動換探針功能
針痕監控系統
晶粒外觀辨識功能



● 晶粒外觀辨識功能

PB-260



- 特色：
- 自動換探針功能 (NEW)
 - 針痕監控系統 (NEW)
 - 針針高度感知 (NEW)
 - 雙面、雙角、PAD、優化探測系統
 - 雙面半自動化高度Zero
 - 自動校正起點點(Auto Alignment key System)
 - 標準的操作畫面
 - Z軸採用直立式螺桿驅動動態性高且穩定
 - 可依客戶需求，同時安裝積分球顯微鏡或光系統
 - 積分球顯微鏡採用三軸精密儀器平台
 - 探針使用快拆式底座，拆卸維護便利
 - 可依客戶需求搭配傳電或不傳電平台

Index Time Table:

Time (min)	0	12	20	40
Z軸上升高度 (mm)	6	73	66	100
Z軸上升高度 (mil)	12	85	90	111
	14	90	95	116

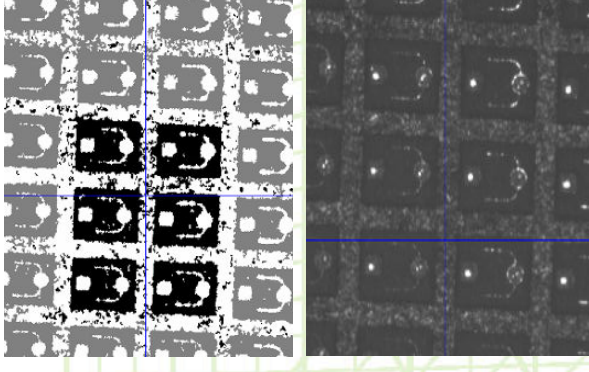
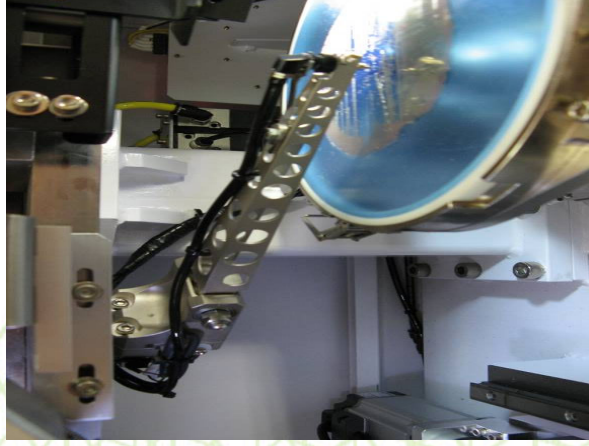
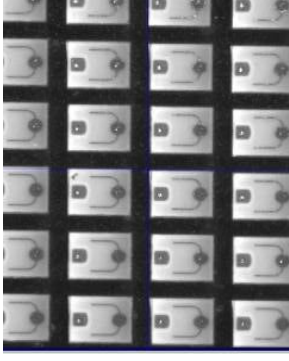
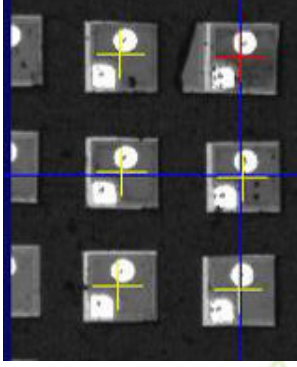
規格 (Specification)

Quick 探針	1.5mm x 1.5mm	針長	8.15"
Max. 針行程	47.5mm	針直徑	0.500"
Max. 針間距	2.0mm x 4.75mm	針間距	0.002"
Max. 針長度	1.5m	針間距	0.002"
Max. 針直徑	0.5mm (0.020)	針間距	0.002"
Z軸行程	1.5m	重量	475kg
探針固定	2.4m	正面負重	45 kg/m ² / 48 w/in
Communication Interface	7Pin, RS232	最大負重	Max. 200kg / 440lb
備註	● 1.5m x 1.5mm, 0.5mm, 0.75mm, 1.0mm, 1.25mm, 1.5mm, 2.0mm, 2.5mm, 3.0mm, 3.5mm, 4.0mm, 4.5mm, 5.0mm, 5.5mm, 6.0mm, 6.5mm, 7.0mm, 7.5mm, 8.0mm, 8.5mm, 9.0mm, 9.5mm, 10.0mm, 10.5mm, 11.0mm, 11.5mm, 12.0mm, 12.5mm, 13.0mm, 13.5mm, 14.0mm, 14.5mm, 15.0mm, 15.5mm, 16.0mm, 16.5mm, 17.0mm, 17.5mm, 18.0mm, 18.5mm, 19.0mm, 19.5mm, 20.0mm, 20.5mm, 21.0mm, 21.5mm, 22.0mm, 22.5mm, 23.0mm, 23.5mm, 24.0mm, 24.5mm, 25.0mm, 25.5mm, 26.0mm, 26.5mm, 27.0mm, 27.5mm, 28.0mm, 28.5mm, 29.0mm, 29.5mm, 30.0mm, 30.5mm, 31.0mm, 31.5mm, 32.0mm, 32.5mm, 33.0mm, 33.5mm, 34.0mm, 34.5mm, 35.0mm, 35.5mm, 36.0mm, 36.5mm, 37.0mm, 37.5mm, 38.0mm, 38.5mm, 39.0mm, 39.5mm, 40.0mm, 40.5mm, 41.0mm, 41.5mm, 42.0mm, 42.5mm, 43.0mm, 43.5mm, 44.0mm, 44.5mm, 45.0mm, 45.5mm, 46.0mm, 46.5mm, 47.0mm, 47.5mm, 48.0mm, 48.5mm, 49.0mm, 49.5mm, 50.0mm, 50.5mm, 51.0mm, 51.5mm, 52.0mm, 52.5mm, 53.0mm, 53.5mm, 54.0mm, 54.5mm, 55.0mm, 55.5mm, 56.0mm, 56.5mm, 57.0mm, 57.5mm, 58.0mm, 58.5mm, 59.0mm, 59.5mm, 60.0mm, 60.5mm, 61.0mm, 61.5mm, 62.0mm, 62.5mm, 63.0mm, 63.5mm, 64.0mm, 64.5mm, 65.0mm, 65.5mm, 66.0mm, 66.5mm, 67.0mm, 67.5mm, 68.0mm, 68.5mm, 69.0mm, 69.5mm, 70.0mm, 70.5mm, 71.0mm, 71.5mm, 72.0mm, 72.5mm, 73.0mm, 73.5mm, 74.0mm, 74.5mm, 75.0mm, 75.5mm, 76.0mm, 76.5mm, 77.0mm, 77.5mm, 78.0mm, 78.5mm, 79.0mm, 79.5mm, 80.0mm, 80.5mm, 81.0mm, 81.5mm, 82.0mm, 82.5mm, 83.0mm, 83.5mm, 84.0mm, 84.5mm, 85.0mm, 85.5mm, 86.0mm, 86.5mm, 87.0mm, 87.5mm, 88.0mm, 88.5mm, 89.0mm, 89.5mm, 90.0mm, 90.5mm, 91.0mm, 91.5mm, 92.0mm, 92.5mm, 93.0mm, 93.5mm, 94.0mm, 94.5mm, 95.0mm, 95.5mm, 96.0mm, 96.5mm, 97.0mm, 97.5mm, 98.0mm, 98.5mm, 99.0mm, 99.5mm, 100.0mm, 100.5mm, 101.0mm, 101.5mm, 102.0mm, 102.5mm, 103.0mm, 103.5mm, 104.0mm, 104.5mm, 105.0mm, 105.5mm, 106.0mm, 106.5mm, 107.0mm, 107.5mm, 108.0mm, 108.5mm, 109.0mm, 109.5mm, 110.0mm, 110.5mm, 111.0mm, 111.5mm, 112.0mm, 112.5mm, 113.0mm, 113.5mm, 114.0mm, 114.5mm, 115.0mm, 115.5mm, 116.0mm, 116.5mm, 117.0mm, 117.5mm, 118.0mm, 118.5mm, 119.0mm, 119.5mm, 120.0mm, 120.5mm, 121.0mm, 121.5mm, 122.0mm, 122.5mm, 123.0mm, 123.5mm, 124.0mm, 124.5mm, 125.0mm, 125.5mm, 126.0mm, 126.5mm, 127.0mm, 127.5mm, 128.0mm, 128.5mm, 129.0mm, 129.5mm, 130.0mm, 130.5mm, 131.0mm, 131.5mm, 132.0mm, 132.5mm, 133.0mm, 133.5mm, 134.0mm, 134.5mm, 135.0mm, 135.5mm, 136.0mm, 136.5mm, 137.0mm, 137.5mm, 138.0mm, 138.5mm, 139.0mm, 139.5mm, 140.0mm, 140.5mm, 141.0mm, 141.5mm, 142.0mm, 142.5mm, 143.0mm, 143.5mm, 144.0mm, 144.5mm, 145.0mm, 145.5mm, 146.0mm, 146.5mm, 147.0mm, 147.5mm, 148.0mm, 148.5mm, 149.0mm, 149.5mm, 150.0mm, 150.5mm, 151.0mm, 151.5mm, 152.0mm, 152.5mm, 153.0mm, 153.5mm, 154.0mm, 154.5mm, 155.0mm, 155.5mm, 156.0mm, 156.5mm, 157.0mm, 157.5mm, 158.0mm, 158.5mm, 159.0mm, 159.5mm, 160.0mm, 160.5mm, 161.0mm, 161.5mm, 162.0mm, 162.5mm, 163.0mm, 163.5mm, 164.0mm, 164.5mm, 165.0mm, 165.5mm, 166.0mm, 166.5mm, 167.0mm, 167.5mm, 168.0mm, 168.5mm, 169.0mm, 169.5mm, 170.0mm, 170.5mm, 171.0mm, 171.5mm, 172.0mm, 172.5mm, 173.0mm, 173.5mm, 174.0mm, 174.5mm, 175.0mm, 175.5mm, 176.0mm, 176.5mm, 177.0mm, 177.5mm, 178.0mm, 178.5mm, 179.0mm, 179.5mm, 180.0mm, 180.5mm, 181.0mm, 181.5mm, 182.0mm, 182.5mm, 183.0mm, 183.5mm, 184.0mm, 184.5mm, 185.0mm, 185.5mm, 186.0mm, 186.5mm, 187.0mm, 187.5mm, 188.0mm, 188.5mm, 189.0mm, 189.5mm, 190.0mm, 190.5mm, 191.0mm, 191.5mm, 192.0mm, 192.5mm, 193.0mm, 193.5mm, 194.0mm, 194.5mm, 195.0mm, 195.5mm, 196.0mm, 196.5mm, 197.0mm, 197.5mm, 198.0mm, 198.5mm, 199.0mm, 199.5mm, 200.0mm, 200.5mm, 201.0mm, 201.5mm, 202.0mm, 202.5mm, 203.0mm, 203.5mm, 204.0mm, 204.5mm, 205.0mm, 205.5mm, 206.0mm, 206.5mm, 207.0mm, 207.5mm, 208.0mm, 208.5mm, 209.0mm, 209.5mm, 210.0mm, 210.5mm, 211.0mm, 211.5mm, 212.0mm, 212.5mm, 213.0mm, 213.5mm, 214.0mm, 214.5mm, 215.0mm, 215.5mm, 216.0mm, 216.5mm, 217.0mm, 217.5mm, 218.0mm, 218.5mm, 219.0mm, 219.5mm, 220.0mm, 220.5mm, 221.0mm, 221.5mm, 222.0mm, 222.5mm, 223.0mm, 223.5mm, 224.0mm, 224.5mm, 225.0mm, 225.5mm, 226.0mm, 226.5mm, 227.0mm, 227.5mm, 228.0mm, 228.5mm, 229.0mm, 229.5mm, 230.0mm, 230.5mm, 231.0mm, 231.5mm, 232.0mm, 232.5mm, 233.0mm, 233.5mm, 234.0mm, 234.5mm, 235.0mm, 235.5mm, 236.0mm, 236.5mm, 237.0mm, 237.5mm, 238.0mm, 238.5mm, 239.0mm, 239.5mm, 240.0mm, 240.5mm, 241.0mm, 241.5mm, 242.0mm, 242.5mm, 243.0mm, 243.5mm, 244.0mm, 244.5mm, 245.0mm, 245.5mm, 246.0mm, 246.5mm, 247.0mm, 247.5mm, 248.0mm, 248.5mm, 249.0mm, 249.5mm, 250.0mm, 250.5mm, 251.0mm, 251.5mm, 252.0mm, 252.5mm, 253.0mm, 253.5mm, 254.0mm, 254.5mm, 255.0mm, 255.5mm, 256.0mm, 256.5mm, 257.0mm, 257.5mm, 258.0mm, 258.5mm, 259.0mm, 259.5mm, 260.0mm, 260.5mm, 261.0mm, 261.5mm, 262.0mm, 262.5mm, 263.0mm, 263.5mm, 264.0mm, 264.5mm, 265.0mm, 265.5mm, 266.0mm, 266.5mm, 267.0mm, 267.5mm, 268.0mm, 268.5mm, 269.0mm, 269.5mm, 270.0mm, 270.5mm, 271.0mm, 271.5mm, 272.0mm, 272.5mm, 273.0mm, 273.5mm, 274.0mm, 274.5mm, 275.0mm, 275.5mm, 276.0mm, 276.5mm, 277.0mm, 277.5mm, 278.0mm, 278.5mm, 279.0mm, 279.5mm, 280.0mm, 280.5mm, 281.0mm, 281.5mm, 282.0mm, 282.5mm, 283.0mm, 283.5mm, 284.0mm, 284.5mm, 285.0mm, 285.5mm, 286.0mm, 286.5mm, 287.0mm, 287.5mm, 288.0mm, 288.5mm, 289.0mm, 289.5mm, 290.0mm, 290.5mm, 291.0mm, 291.5mm, 292.0mm, 292.5mm, 293.0mm, 293.5mm, 294.0mm, 294.5mm, 295.0mm, 295.5mm, 296.0mm, 296.5mm, 297.0mm, 297.5mm, 298.0mm, 298.5mm, 299.0mm, 299.5mm, 300.0mm, 300.5mm, 301.0mm, 301.5mm, 302.0mm, 302.5mm, 303.0mm, 303.5mm, 304.0mm, 304.5mm, 305.0mm, 305.5mm, 306.0mm, 306.5mm, 307.0mm, 307.5mm, 308.0mm, 308.5mm, 309.0mm, 309.5mm, 310.0mm, 310.5mm, 311.0mm, 311.5mm, 312.0mm, 312.5mm, 313.0mm, 313.5mm, 314.0mm, 314.5mm, 315.0mm, 315.5mm, 316.0mm, 316.5mm, 317.0mm, 317.5mm, 318.0mm, 318.5mm, 319.0mm, 319.5mm, 320.0mm, 320.5mm, 321.0mm, 321.5mm, 322.0mm, 322.5mm, 323.0mm, 323.5mm, 324.0mm, 324.5mm, 325.0mm, 325.5mm, 326.0mm, 326.5mm, 327.0mm, 327.5mm, 328.0mm, 328.5mm, 329.0mm, 329.5mm, 330.0mm, 330.5mm, 331.0mm, 331.5mm, 332.0mm, 332.5mm, 333.0mm, 333.5mm, 334.0mm, 334.5mm, 335.0mm, 335.5mm, 336.0mm, 336.5mm, 337.0mm, 337.5mm, 338.0mm, 338.5mm, 339.0mm, 339.5mm, 340.0mm, 340.5mm, 341.0mm, 341.5mm, 342.0mm, 342.5mm, 343.0mm, 343.5mm, 344.0mm, 344.5mm, 345.0mm, 345.5mm, 346.0mm, 346.5mm, 347.0mm, 347.5mm, 348.0mm, 348.5mm, 349.0mm, 349.5mm, 350.0mm, 350.5mm, 351.0mm, 351.5mm, 352.0mm, 352.5mm, 353.0mm, 353.5mm, 354.0mm, 354.5mm, 355.0mm, 355.5mm, 356.0mm, 356.5mm, 357.0mm, 357.5mm, 358.0mm, 358.5mm, 359.0mm, 359.5mm, 360.0mm, 360.5mm, 361.0mm, 361.5mm, 362.0mm, 362.5mm, 363.0mm, 363.5mm, 364.0mm, 364.5mm, 365.0mm, 365.5mm, 366.0mm, 366.5mm, 367.0mm, 367.5mm, 368.0mm, 368.5mm, 369.0mm, 369.5mm, 370.0mm, 370.5mm, 371.0mm, 371.5mm, 372.0mm, 372.5mm, 373.0mm, 373.5mm, 374.0mm, 374.5mm, 375.0mm, 375.5mm, 376.0mm, 376.5mm, 377.0mm, 377.5mm, 378.0mm, 378.5mm, 379.0mm, 379.5mm, 380.0mm, 380.5mm, 381.0mm, 381.5mm, 382.0mm, 382.5mm, 383.0mm, 383.5mm, 384.0mm, 384.5mm, 385.0mm, 385.5mm, 386.0mm, 386.5mm, 387.0mm, 387.5mm, 388.0mm, 388.5mm, 389.0mm, 389.5mm, 390.0mm, 390.5mm, 391.0mm, 391.5mm, 392.0mm, 392.5mm, 393.0mm, 393.5mm, 394.0mm, 394.5mm, 395.0mm, 395.5mm, 396.0mm, 396.5mm, 397.0mm, 397.5mm, 398.0mm, 398.5mm, 399.0mm, 399.5mm, 400.0mm, 400.5mm, 401.0mm, 401.5mm, 402.0mm, 402.5mm, 403.0mm, 403.5mm, 404.0mm, 404.5mm, 405.0mm, 405.5mm, 406.0mm, 406.5mm, 407.0mm, 407.5mm, 408.0mm, 408.5mm, 409.0mm, 409.5mm, 410.0mm, 410.5mm, 411.0mm, 411.5mm, 412.0mm, 412.5mm, 413.0mm, 413.5mm, 414.0mm, 414.5mm, 415.0mm, 415.5mm, 416.0mm, 416.5mm, 417.0mm, 417.5mm, 418.0mm, 418.5mm, 419.0mm, 419.5mm, 420.0mm, 420.5mm, 421.0mm, 421.5mm, 422.0mm, 422.5mm, 423.0mm, 423.5mm, 424.0mm, 424.5mm, 425.0mm, 425.5mm, 426.0mm, 426.5mm, 427.0mm, 427.5mm, 428.0mm, 428.5mm, 429.0mm, 429.5mm, 430.0mm, 430.5mm, 431.0mm, 431.5mm, 432.0mm, 432.5mm, 433.0mm, 433.5mm, 434.0mm, 434.5mm, 435.0mm, 435.5mm, 436.0mm, 436.5mm, 437.0mm, 437.5mm, 438.0mm, 438.5mm, 439.0mm, 439.5mm, 440.0mm, 440.5mm, 441.0mm, 441.5mm, 442.0mm, 442.5mm, 443.0mm, 443.5mm, 444.0mm, 444.5mm, 445.0mm, 445.5mm, 446.0mm, 446.5mm, 447.0mm, 447.5mm, 448.0mm, 448.5mm, 449.0mm, 449.5mm, 450.0mm, 450.5mm, 451.0mm, 451.5mm, 452.0mm, 452.5mm, 453.0mm, 453.5mm, 454.0mm, 454.5mm, 455.0mm, 455.5mm, 456.0mm, 456.5mm, 457.0mm, 457.5mm, 458.0mm, 458.5mm, 459.0mm, 459.5mm, 460.0mm, 460.5mm, 461.0mm, 461.5mm, 462.0mm, 462.5mm, 463.0mm, 463.5mm, 464.0mm, 464.5mm, 465.0mm, 465.5mm, 466.0mm, 466.5mm, 467.0mm, 467.5mm, 468.0mm, 468.5mm, 469.0mm, 469.5mm, 470.0mm, 470.5mm, 471.0mm, 471.5mm, 472.0mm, 472.5mm, 473.0mm, 473.5mm, 474.0mm, 474.5mm, 475.0mm, 475.5mm, 476.0mm, 476.5mm, 477.0mm, 477.5mm, 478.0mm, 478.5mm, 479.0mm, 479.5mm, 480.0mm, 480.5mm, 481.0mm, 481.5mm, 482.0mm, 482.5mm, 483.0mm, 483.5mm, 484.0mm, 484.5mm, 485.0mm, 485.5mm, 486.0mm, 486.5mm, 487.0mm, 487.5mm, 488.0mm, 488.5mm, 489.0mm, 489.5mm, 490.0mm, 490.5mm, 491.0mm, 491.5mm, 492.0mm, 492.5mm, 493.0mm, 493.5mm, 494.0mm, 494.5mm, 495.0mm, 495.5mm, 496.0mm, 496.5mm, 497.0mm, 497.5mm, 498.0mm, 498.5mm, 499.0mm, 499.5mm, 500.0mm, 500.5mm, 501.0mm, 501.5mm, 502.0mm, 502.5mm, 503.0mm, 503.5mm, 504.0mm, 504.5mm, 505.0mm, 505.5mm, 506.0mm, 506.5mm, 507.0mm, 507.5mm, 508.0mm, 508.5mm, 509.0mm, 509.5mm, 510.0mm, 510.5mm, 511.0mm, 511.5mm, 512.0mm, 512.5mm, 513.0mm, 513.5mm, 514.0mm, 514.5mm, 515.0mm, 515.5mm, 516.0mm, 516.5mm, 517.0mm, 517.5mm, 518.0mm, 518.5mm, 519.0mm, 519.5mm, 520.0mm, 520.5mm, 521.0mm, 521.5mm, 522.0mm, 522.5mm, 523.0mm, 523.5mm, 524.0mm, 524.5mm, 525.0mm, 525.5mm, 526.0mm, 526.5mm, 527.0mm, 527.5mm, 528.0mm, 528.5mm, 529.0mm, 529.5mm, 530.0mm, 530.5mm, 531.0mm, 531.5mm, 532.0mm, 532.5mm, 533.0mm, 533.5mm, 534.0mm, 534.5mm, 535.0mm, 535.5mm, 536.0mm, 536.5mm, 537.0mm, 537.5mm, 538.0mm, 538.5mm, 539.0mm, 539.5mm, 540.0mm, 540.5mm, 541.0mm, 541.5mm, 542.0mm, 542.5mm, 543.0mm, 543.5mm, 544.0mm, 544.5mm, 545.0mm, 545.5mm, 546.0mm, 546.5mm, 547.0mm, 547.5mm, 548.0mm, 548.5mm, 549.0mm, 549.5mm, 550.0mm, 550.5mm, 551.0mm, 551.5mm, 552.0mm, 552.5mm, 553.0mm, 553.5mm, 554.0mm, 554.5mm, 555.0mm, 555.5mm, 556.0mm, 556.5mm, 557.0mm, 557.5mm, 558.0mm, 558.5mm, 559.0mm, 559.5mm, 560.0mm, 560.5mm, 561.0mm, 561.5mm, 562.0mm, 562.5mm, 563.0mm, 563.5mm, 564.0mm, 564.5mm, 565.0mm, 565.5mm, 566.0mm, 566.5mm, 567.0mm, 567.5mm, 568.0mm, 568.5mm, 569.0mm, 569.5mm, 570.0mm, 570.5mm, 571.0mm, 571.5mm, 572.0mm, 572.5mm, 573.0mm, 573.5mm, 574.0mm, 574.5mm, 575.0mm, 575.5mm, 576.0mm, 576.5mm, 577.0mm, 577.5mm, 578.0mm, 578.5mm, 579.0mm, 579.5mm, 580.0mm, 580.5mm, 581.0mm, 581.5mm, 582.0mm, 582.5mm, 583.0mm, 583.5mm, 584.0mm, 584.5mm, 585.0mm, 585.5mm, 586.0mm, 586.5mm, 587.0mm, 587.5mm, 588.0mm, 588.5mm, 589.0mm, 589.5mm, 590.0mm, 590.5mm, 591.0mm, 591.5mm, 592.0mm, 592.5mm, 593.0mm, 593.5mm, 594.0mm, 594.5mm, 595.0mm, 595.5mm, 596.0mm, 596.5mm, 597.0mm, 597.5mm, 598.0mm, 598.5mm, 599.0mm, 599.5mm, 600.0mm, 600.5mm, 601.0mm, 601.5mm, 602.0mm, 602.5mm, 603.0mm, 603.5mm, 604.0mm, 604.5mm, 605.0mm, 605.5mm, 606.0mm, 606.5mm, 607.0mm, 607.5mm, 608.0mm, 608.5mm, 609.0mm, 609.5mm, 610.0mm, 610.5mm, 611.0mm, 611.5mm, 612.0mm, 612.5mm, 613.0mm, 613.5mm, 614.0mm, 614.5mm, 615.0mm, 615.5mm, 616.0mm, 616.5mm, 617.0mm, 617.5mm, 618.0mm, 618.5mm, 619.0mm, 619.5mm, 620.0mm, 620.5mm, 621.0mm, 621.5mm, 622.0mm, 622.5mm, 623.0mm, 623.5mm, 624.0mm, 624.5mm, 625.0mm, 625.5mm, 626.0mm, 626.5mm, 627.0mm, 627.5mm, 628.0mm, 628.5mm, 629.0mm, 629.5mm, 630.0mm, 630.5mm, 631.0mm, 631.5mm, 632.0mm, 632.5mm, 633.0mm, 633.5mm, 634.0mm, 634.5mm, 635.0mm, 635.5mm, 636.0mm, 636.5mm, 637.0mm, 637.5mm, 638.0mm, 638.5mm, 639.0mm, 639.5mm, 640.0mm, 640.5mm, 641.0mm, 641.5mm, 642.0mm, 642.5mm, 643.0mm, 643.5mm, 644.0mm, 644.5mm, 645.0mm, 645.5mm, 646.0mm, 646.5mm, 647.0mm, 647.5mm, 648.0mm, 648.5mm, 649.0mm, 649.5mm, 650.0mm, 650.5mm, 651.0mm, 651.5mm, 652.0mm, 652.5mm, 653.0mm, 653.5mm, 654.0mm, 654.5mm, 655.0mm, 655.5mm, 656.0mm, 656.5mm, 657.0mm, 657.5mm, 658.0mm, 658.5mm, 659.0mm, 659.5mm, 660.0mm, 660.5mm, 661.0mm, 661.5mm, 662.0mm, 662.5mm, 663.0mm, 663.5mm, 664.0mm, 664.5mm, 665.0mm, 665.5mm, 666.0mm, 666.5mm, 667.0mm, 667.5mm, 668.0mm, 668.5mm, 669.0mm, 669.5mm, 670.0mm, 670.5mm, 671.0mm, 671.5mm, 672.0mm, 672.5mm, 673.0mm, 673.5mm, 674.0mm, 674.5mm, 675.0mm, 675.5mm, 676.0mm, 676.5mm, 677.0mm, 677.5mm, 678.0mm, 678.5mm, 679.0mm, 679.5mm, 680.0mm, 680.5mm, 681.0mm, 681.5mm, 682.0mm, 682.5mm, 683.0mm, 683.5mm, 684.0mm, 684.5mm, 685.0mm, 685.5mm, 686.0mm, 686.5		

LS-360 LED Sorter

久元電子公司簡報

LS-360 LED Sorter



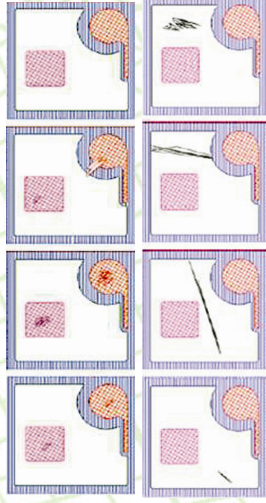
YoungTek Electronics Corp.

自動光學檢測系統 (Auto Optical Inspection)

久元電子公司簡報

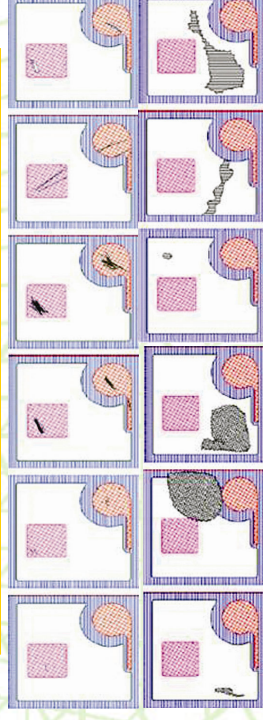
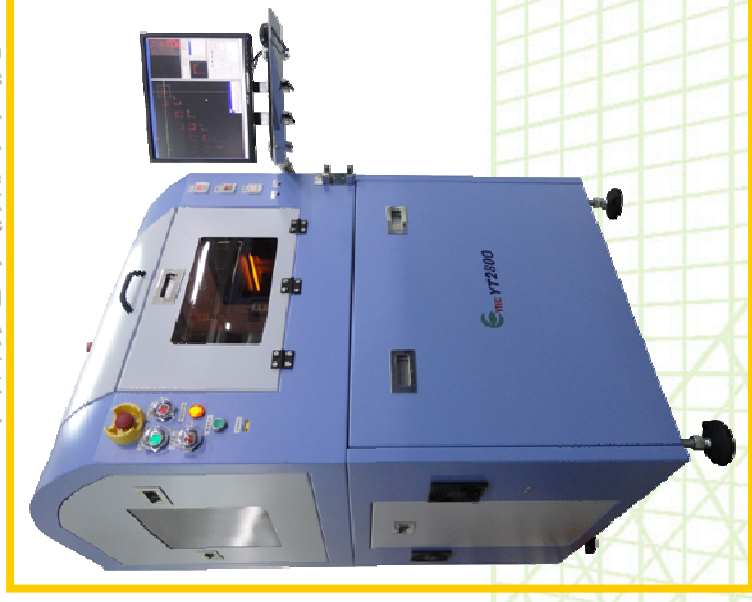
YT 5311 LED Chip/Wafer/Mask

半自動光學檢測系統



YT 2800 LED Chip/Wafer/Mask

全自動光學檢測系統



YoungTek Electronics Corp.

自動光學檢測應用(AOI Application)

久元電子公司簡報

被動元件、LED
產品六面外觀檢測



YT2300
元件六面外觀
檢測機

YT2330
雙面元件六面外觀
檢測機

LED及被動元件散熱基板
產品之外觀檢測



YT2700
LED及被動元件
散熱基板之2D AOI
檢測機



YT2705
LED及被動元件
散熱基板之2D AOI
檢測機
(Auto Load/Unload)



YTEC YoungTek Electronics Corp.

自動光學檢測系統 (Auto Optical Inspection)

久元電子公司簡報

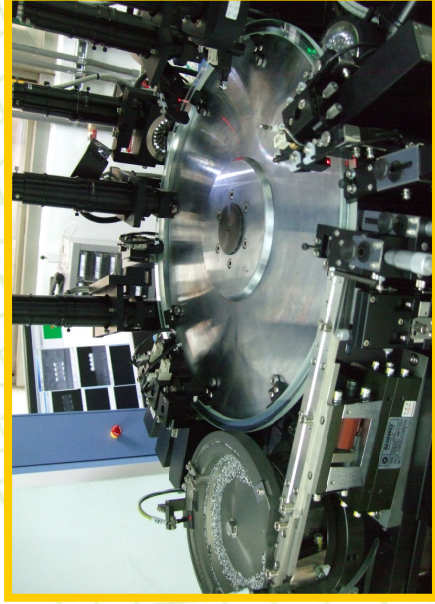
YT 2300(YT2330) Component AOI

自動光學檢測系統(雙軌)



Reel type taped products:

- Resistor
- Capacitor
- Inductor
- LED
- IC
- Relay
- Connector
- Fuse

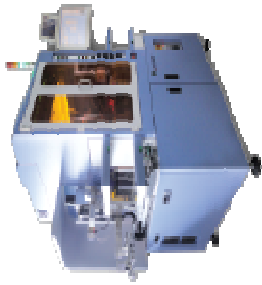


YoungTek Electronics Corp.

LED Assembly Application Equipment

Company Profile

固晶
Die Bond



YT2500
多站雙軌
LED點膠機

銲線
Wire Bond



點膠
Dispense



剝料 / 下料
Stripping & Cutting



YT2300
元件六面外觀
檢測機

外觀篩選
AOI



測試分類
Testing & Sorting

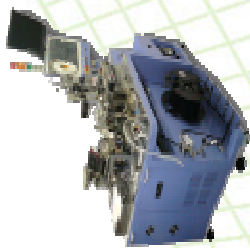


YT6400
LED測試分類機

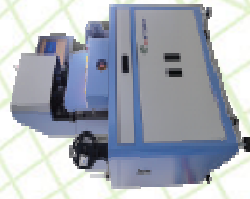
包裝 / 捲帶
Tapping

YT1100
高遷多站
平行LED測試機

出貨前檢查
Final Check



YT6300
LED包裝機



YT2210
超薄元件
自動光學檢測機



YoungTek Electronics Corp.

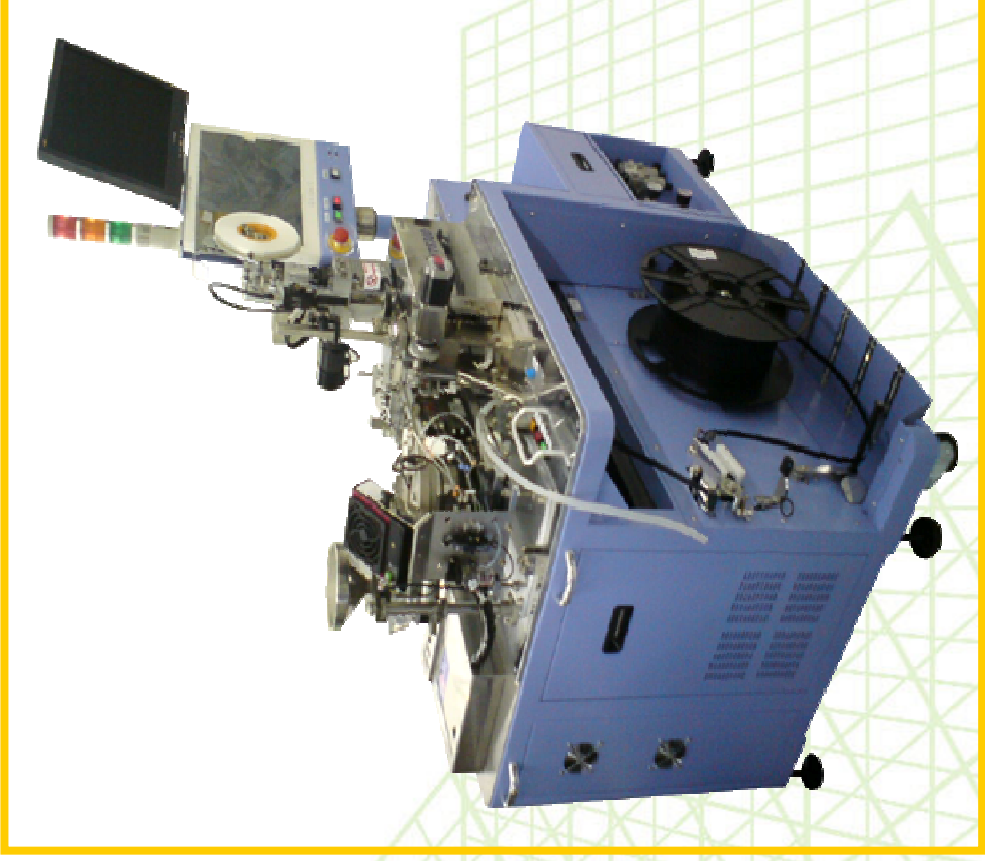
YT6400 LED Handler & YT6300 LED Tapping

久元電子公司簡報

YT6400 LED Handler



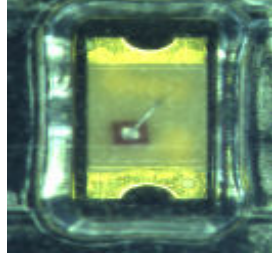
YT6300 LED Tapping



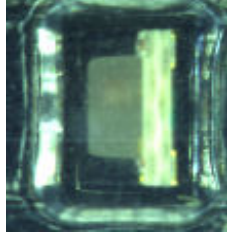
自動光學檢測系統 (Auto Optical Inspection)

久元電子公司簡報

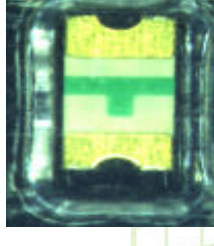
YT 2210 Reel Type Components 自動光學檢測系統



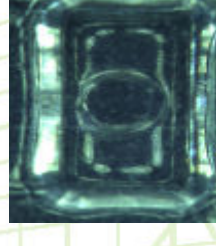
Polarity inverse package



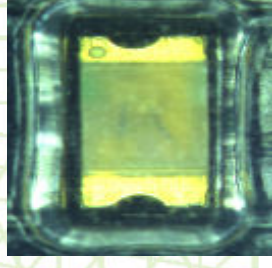
Tilt



Over turn



Empty



Mixed package



Company Profile

Revenue Growth



YTEC YoungTek Electronics Corp.

2011&2012 Monthly Revenue

Company Profile
NT\$(Thousand)

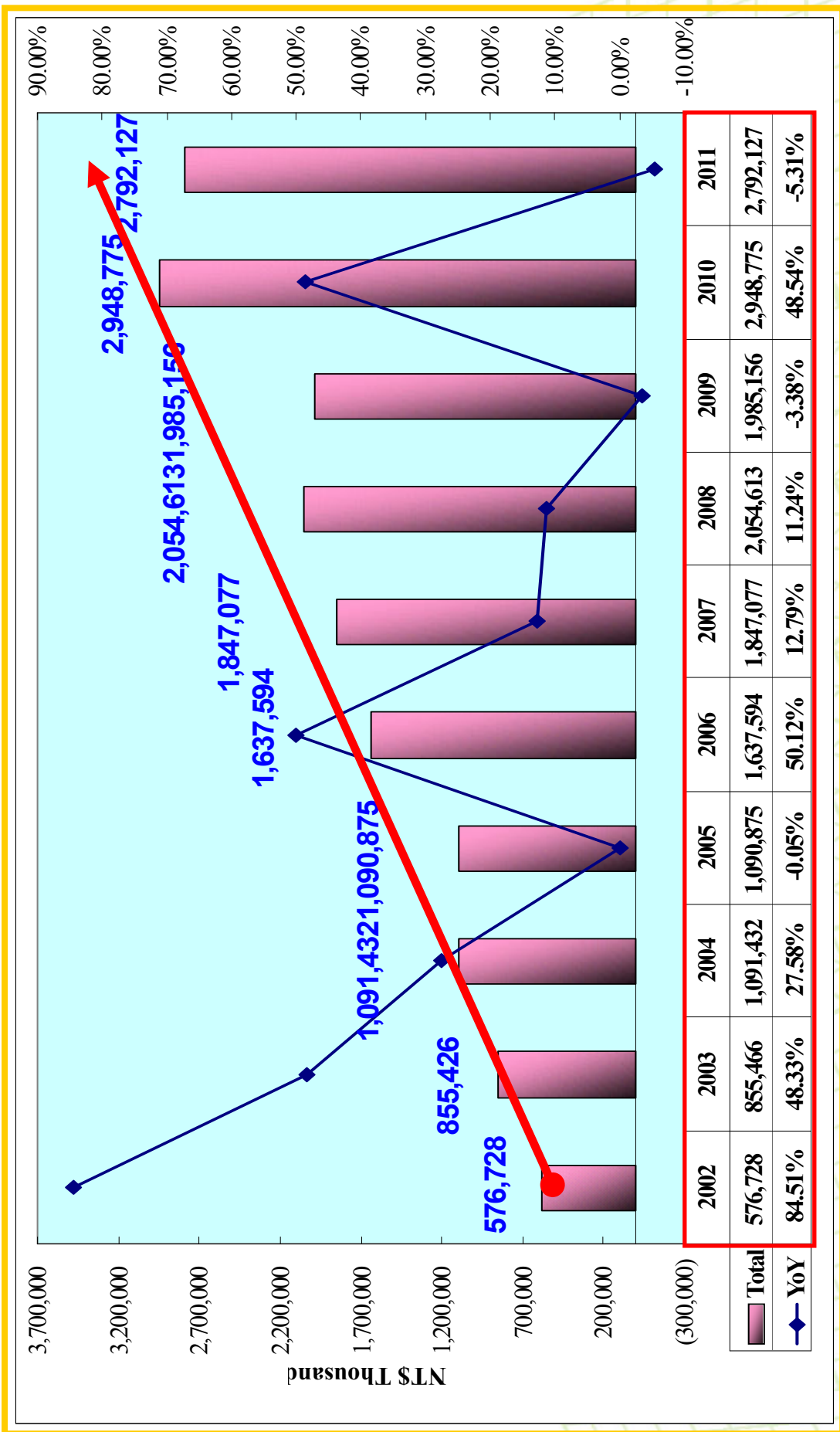
Business Item/Month	Jan.	Feb.	Mar.	Apr.	May	Jun.	Jul.	Aug.	Sep.	Oct.	Nov.	Dec.	Total	Share(%)	
切善機代工 Sawing & Sorting OEM	2011	99,641	107,086	131,677	124,662	130,566	127,673	103,794	98,761	94,537	89,523	81,498	1,236,745	47.32%	
	2012	73,439	97,671	111,018	115,277	119,238	121,468	111,306	115,728	107,802	98,054		1,192,989	42.20%	
	YoY	-26.30%	-8.79%	-15.69%	-7.53%	-8.68%	-5.71%	-4.45%	7.24%	17.18%	14.03%	9.53%		-3.54%	
測試代工 Testing OEM	MoM	-9.89%	33.00%	13.67%	3.84%	3.44%	1.87%	-8.76%	3.97%	-6.85%	-9.04%				
	2011	80,684	66,395	115,541	101,928	110,180	86,142	85,536	90,520	78,549	86,727	91,049	86,508	993,251	38.00%
	2012	95,751	101,493	117,892	115,043	125,708	133,085	146,328	129,752	126,422	145,324	116,998		1,353,796	47.89%
機器組裝等產品銷售 Own Product Sales	YoY	18.67%	52.86%	2.03%	12.87%	14.09%	54.49%	71.07%	43.34%	60.95%	28.50%		36.30%		
	MoM	10.68%	6.00%	16.16%	-2.42%	9.27%	5.87%	9.95%	-11.33%	-2.57%	-19.49%				
	2011	29,417	49,923	58,053	47,824	46,144	35,405	48,591	28,812	19,012	14,722	5,740	10,482	383,643	14.68%
營業收入淨額 (Unit:K)	2012	5,011	5,077	21,899	29,823	83,454	39,695	32,838	12,097	17,374	22,869	9,982		280,119	9.91%
	YoY	-82.97%	-89.83%	-62.28%	-37.64%	80.86%	12.12%	-32.42%	-58.01%	-8.62%	55.34%	73.90%		-26.98%	
	MoM	-52.19%	1.32%	331.34%	36.18%	179.83%	-52.43%	-17.27%	-63.16%	43.62%	31.63%	-56.35%			
Sales Revenue (Net)	2011	209,742	223,404	305,271	274,414	286,890	250,372	261,800	223,126	196,322	195,986	186,312	178,488	2,613,639	100.0%
	2012	174,201	204,241	250,809	260,143	328,400	294,248	301,154	253,155	259,524	275,995	225,034	0	2,826,904	100.0%
	YoY	-16.95%	-8.58%	-17.84%	-5.20%	14.47%	17.52%	15.03%	13.46%	32.19%	40.82%	20.78%		8.16%	
Sales Revenue (Total)	MoM	-2.40%	17.24%	22.80%	3.72%	26.24%	-10.40%	2.35%	-15.94%	2.52%	6.35%	-18.46%			
	2011	209,742	433,146	738,417	1,012,831	1,299,721	1,550,093	1,811,893	2,035,019	2,231,341	2,427,327	2,613,639	2,792,127	--	--
	2012	174,201	378,442	629,251	889,394	1,217,794	1,512,042	1,813,196	2,066,351	2,325,875	2,601,870	2,826,904		2,826,904	
總計代工成長 OEM Growth (Total)	YoY	-16.95%	-12.63%	-14.78%	-12.19%	-6.30%	-2.45%	0.07%	1.54%	4.24%	8.16%				
	2011	180,325	173,481	247,218	226,590	240,746	214,967	213,209	194,314	177,310	181,264	180,572	168,006	2,229,996	--
	2012	169,190	199,164	228,910	230,320	244,946	254,553	268,316	241,058	242,150	253,126	215,052		2,546,785	
OEM Growth (Total)	YoY	-6.17%	14.80%	-7.41%	1.65%	1.74%	18.41%	25.85%	24.06%	36.57%	19.09%			14.21%	
	MoM	0.70%	17.72%	14.94%	0.62%	6.35%	3.92%	5.41%	-10.16%	0.45%	-15.04%				



YoungTek Electronics Corp.

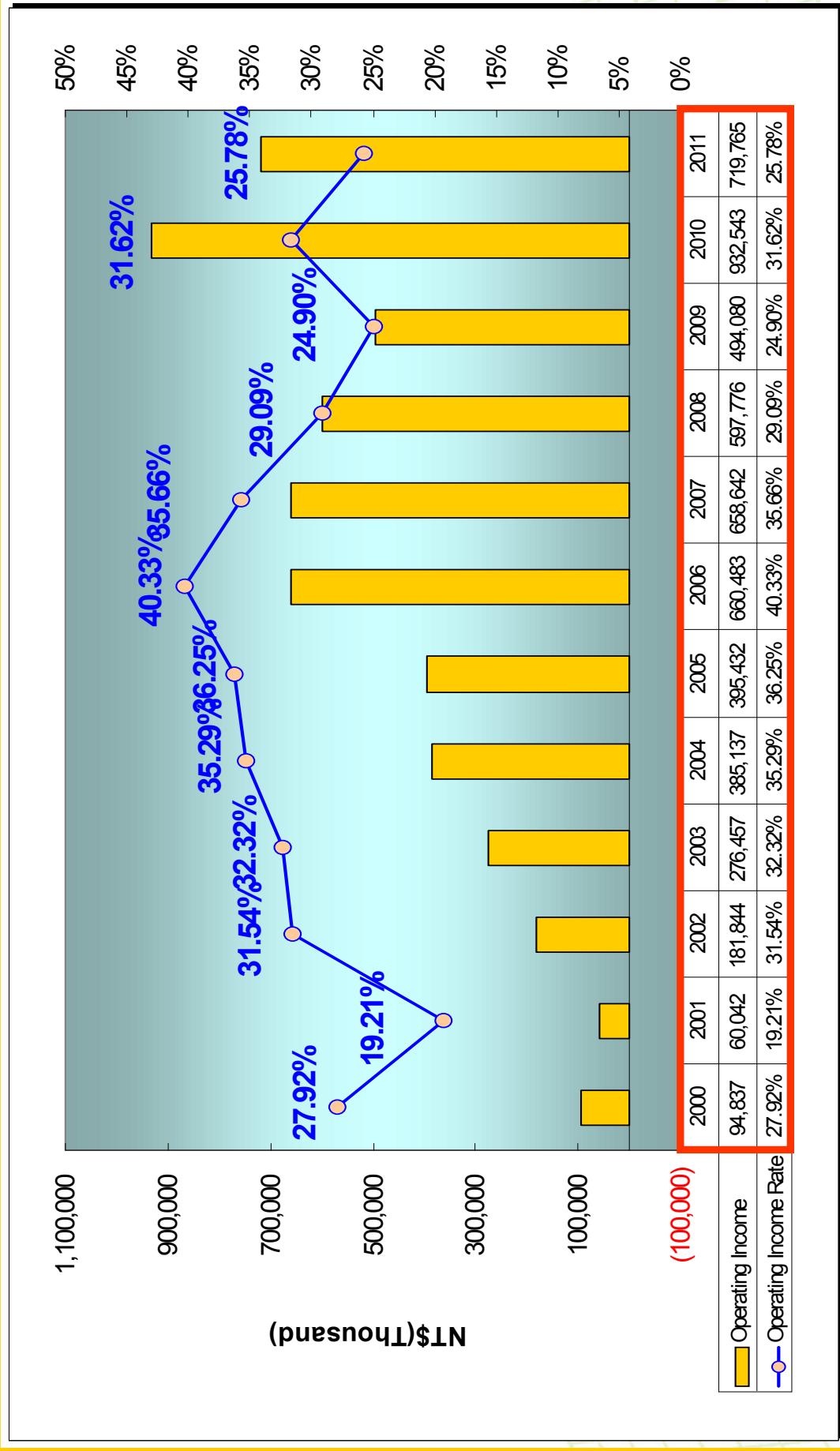
2002~2011 Revenue Growth

Company Profile



2000~2011 Operating Income

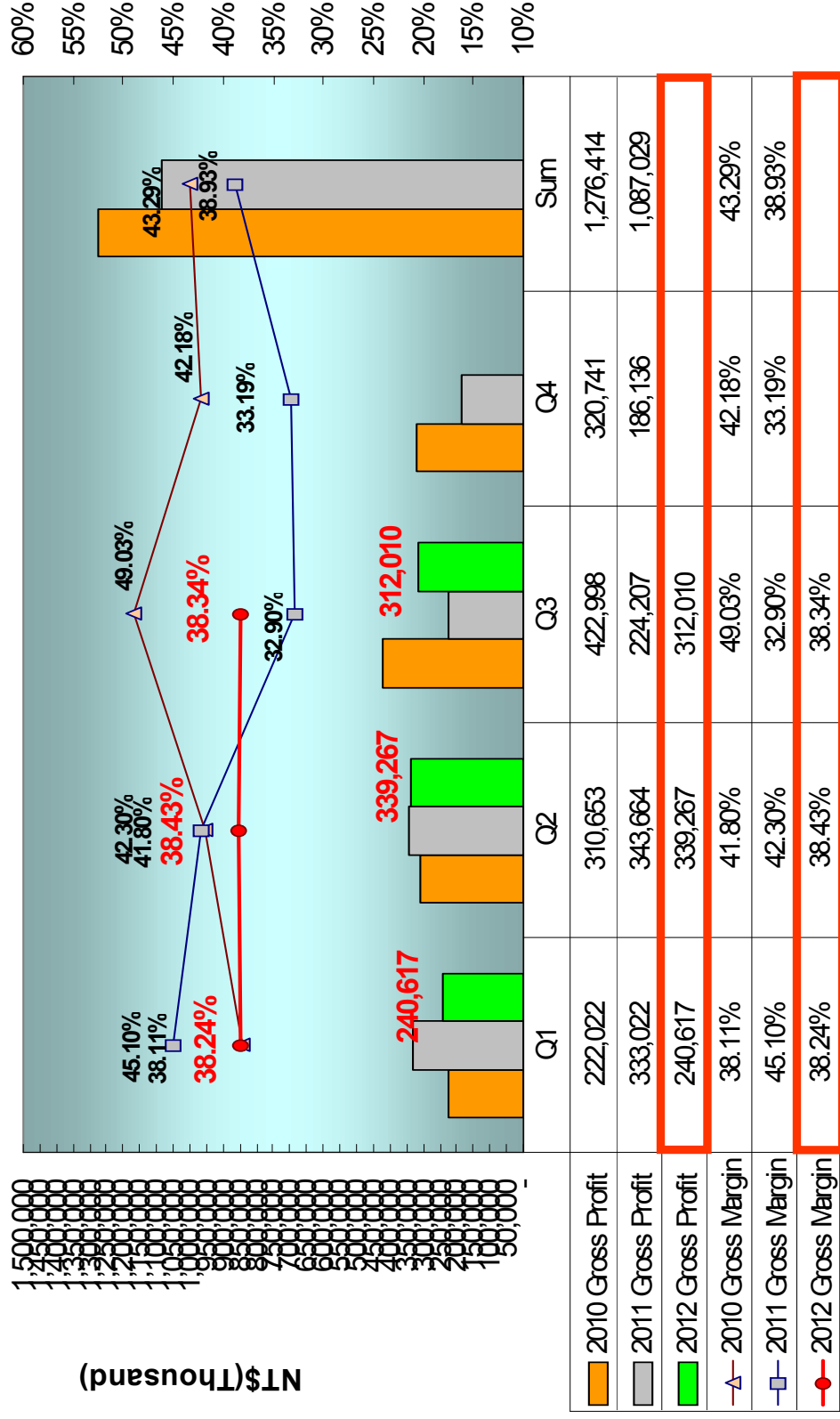
Company Profile



YoungTek Electronics Corp.

2010~2012 Gross Profit

Company Profile



Business Expansion Status(相關產業之狀況)

Company Profile

- 半導體及光電切挑代工服務：進入2012年11月份業績、YOY成長9.5%、符合預期、因此將持續追蹤、另LED在新的應用提昇下樂觀預期在LED挑檢已擴充之產能 應可適時提供市場成長之需求、相信可挹助公司之營收成長。
- IC測試系統開發：2006年3月份與美商安捷倫(Agilent)科技(新公司名稱: Verigy惠瑞捷)簽訂IC測試系統技術合作、除了2006年已陸續支付久元簽約金而達成階段性目標、因而提昇公司營收和獲利。另在雙方合作互動下已提昇測試機技術層次及銷售量、更上層樓。
- CIS、CCM、LED後段生產設備及AOI設備開發：成功開發完成CIS(CMOS影像感測系統)、具備高速影像處理及完整電性測試之解決方案、並導入代工服務、挹助營收。自行開發之CCM(影像感測模組測試設備)、LED後段生產設備及AOI(自動光學檢測系統)等設備、因應市場需求將擴展銷售、AOI設備研發係以解決半導體及光電等產業在目檢之視覺盲點並可大幅節省人力、並已將光電技術結合影像分析等與自動化設備設計、成功研發出各類型外觀檢測機。
進入2012年11月份業績、YOY成長73.9%、符合預期因此將持續追蹤、相信在持續開發新產品及功能提昇下、展望未來應可持續挹助業績成長之動力。
- 半導體代工服務：進入2012年11月份業績YOY成長28.5%、創歷史11月之單月新高、累計1~11月成長36.3%創歷史新高超出預期、因此將持續追蹤、而YTEC 在持續開發新產品與互補及平衡的產品線發酵下(如LCD,CIS,RF...etc)、展望未來應可持續挹助業績成長之動力。



Share payout composition and history

Company Profile

Year	93年度 (2004)	94年度 (2005)	95年度 (2006)	96年度 (2007)	97年度 (2008)	98年度 (2009)	99年度 (2010)	100年度 (2011)	101年度 (2012)
	配2年度 Profit(2003)	配3年度 Profit(2004)	配4年度 profit(2005)	配5年度 Profit(2006)	配6年度 Profit(2007)	配7年度 Profit(2008)	配8年度 Profit(2009)	配9年度 Profit(2010)	配10年度 Profit(2011)
Cash(NTD)	\$3.00	\$3.00	\$2.61	\$4.00	\$4.00	\$3.00	\$3.00	\$4.671	\$5.238
Free Pair stock of	\$2.00	\$2.00	\$0.87	\$1.00	\$0.50	\$0.10	\$0.10		
Stock Capital reserve fund	--	--	--	--	--	--	--	\$0.093	\$0.095
EPS(NTD)	\$7.28	\$8.24	\$5.56	\$8.61	\$7.41	\$6.09	\$4.07	\$8.53	\$6.68



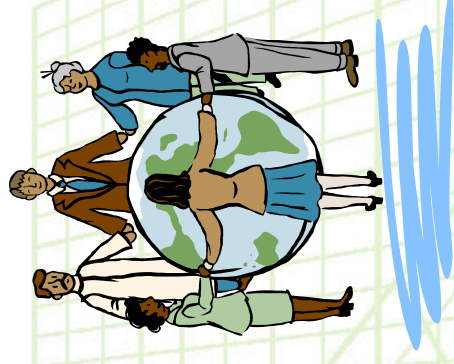
YoungTek Electronics Corp.

公司願景Company Mission

Company Profile

著眼於國內外市場的開拓，讓久元成爲立足台灣
的整合性後段IC及LED代工服務廠，並朝放眼
世界的自有產品、自有品牌邁進。

Based on the domestic and international marketing development, YTEC has gotten a foothold as an integrated back-end IC&LED OEM factory. YTEC moves forward, with it's own products, and Own Bench Marks.



YTEC YoungTek Electronics Corp.

Q & A

Company Profile

Thank you very much



YoungTek Electronics Corp.