

Brief Introduction

February 11th, 2014



2014 VISIT SCHEDULE @久元

Company Profile

Contents

Time

- | | |
|---|-------------|
| <input type="checkbox"/> Brief Introduction of YTEC | 14:00~14:20 |
| <input type="checkbox"/> Q & A | 14:20~15:30 |
| <input type="checkbox"/> Line Tour (Free) | 15:30~16:00 |



Contents

Company Profile

- Brief Introduction**
- Factory Overview**
- Company Milestone**
- Company Management Concept**
- OEM Services**
- R&D Roadmap and Own Product Development**
- Revenue Growth**
- Company Mission**



Brief Introduction

Company Profile

Found Time : 1991/July

Chairman : Bily Wang

President of Service Group : Jeff Chang

President of Own Product Group : Glen Chen

Employee : 991 persons

Capital : NTD 1176million (USD 39.2 million)

Factories : **Plant 1** : Special & substrate sawing

SBIP Plant : IC back-end turn-key service, ATE&AOI

Li Hsin Plant : LED back-end turn-key service

An Ping Plant : LED Testing & sorting

Xiamen/Changzhou Plant : LED Testing & sorting

CRT (Shenzhen) Plant : IC Testing & sorting

WuJiang MightYtek Plant : IC Assembly

Business Items :

1. **Semiconductor and LED OEM**: IC testing, wafer sawing, grinding, chip sorting and LED testing, laser scribing, sorting and substrate sawing.

2. **Design, manufacture and sales of semiconductor equipments**: Full-function IC tester, logic ,analog, Mixed-Signal IC Tester , LED tester, prober and sorter, CCM equipments, AOI system.



YoungTek Electronics Corp.

Factory Overview

Company Profile

Plant #1



SBIP Plant



Li-Hsin Plant



Hsinchu

Tainan

An-Ping Plant



YoungTek Electronics Corp.

Factory Overview

Company Profile

Changzhou YT Plant



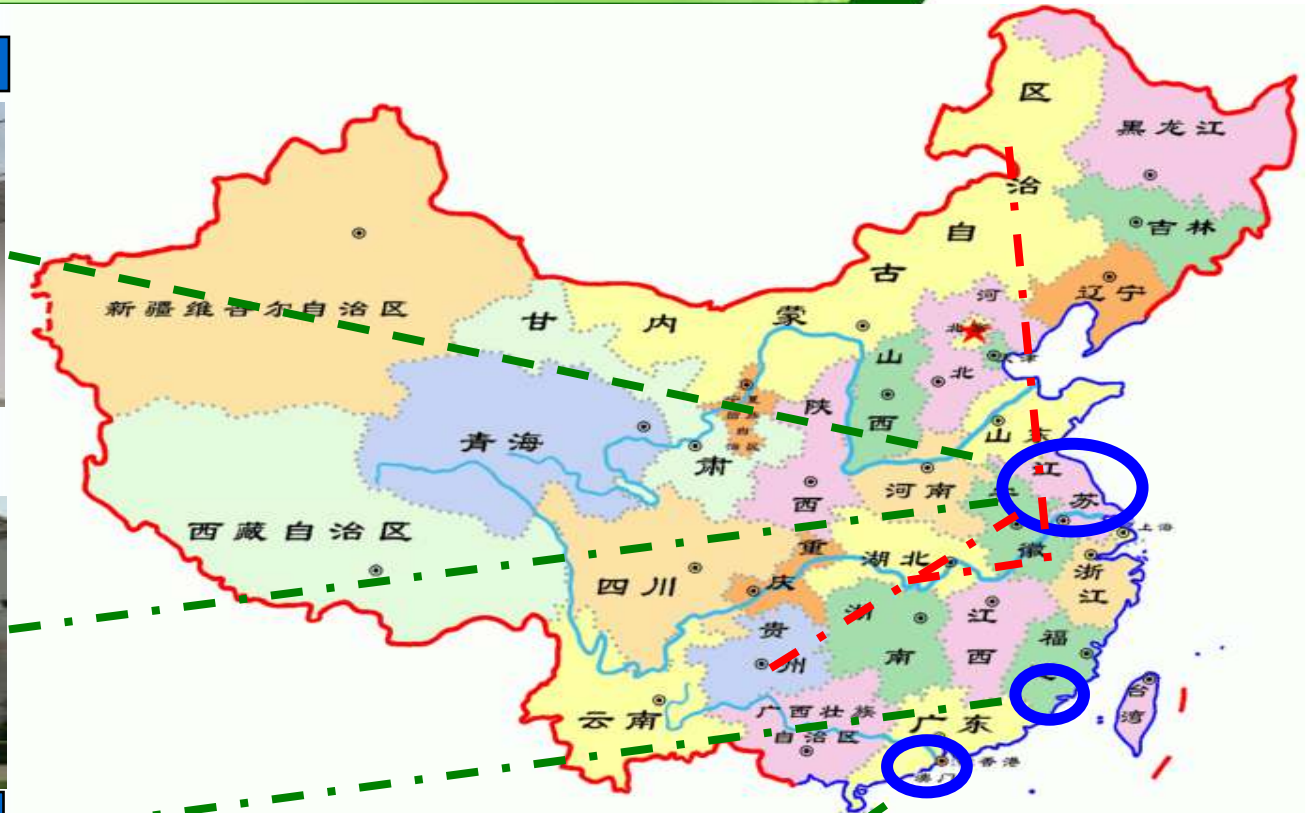
WuJiang MightYtek Plant



Xiamen YT Plant



CRT (Shenzhen) Plant



YoungTek Electronics Corp.

Company Milestone

Company Profile

- 1991/Jul. YTEC was founded and the capital is NTD \$ 5 million.
- 1998/Oct. Develop logic tester (Goblin) with 5 MHz/40 pins.
- 2000/Mar. Achieved the certification of ISO 9001
- 2000/Jul. Full-function IC tester was verified by industry agency with predominant product development project.
- 2002/Nov. SEC (Securities and Exchange Commission) approve YTEC to public stock.
- 2003/Nov. LED OEM service was established.
- 2003/Dec. Obtain OTC certification.
- 2004/Mar. Got the approval to establish the branch in Hsin chu SBIP.
- 2004/Mar.29 Listed in Taiwan stock exchange. (Stock No.: 6261)
- 2006/Mar. Signs the cooperation agreement of the IC test system technology. with Agilent Technologies
- 2006/Dec. Achieved the certification of ISO 14001 and OHSAS 18001.
- 2007/Jul. Develop Tainan An Ping plant for LED sorting.
- 2008/May. Develop Li Hsin plant for LED test & sorting.
- 2008/Oct. Achieved the certification of ISO/TS 16949.
- 2009/May. To establish the Xiamen Young Tek Electronics Co., Ltd. to provide the LED Backend Turn-key service.
- 2009/Jun. Solar silicon substrate inspection system was verified Science Park Administration with development project.
- 2010/Mar. Develop SBIP plant for wafer grinding & sawing.
- 2010/Sep. To establish the Changzhou YoungTek Electronics Co., Ltd. to provide the LED Backend Turn-key service.
- 2011/Jan. Achieved the certification of IECQ QC080000.
- 2011/Dec. To establish the WuJiang MightYtek Semiconductor Co., Ltd. to provide the Semiconductor Backend Testing & Ass'y Turn-key service.
- 2012/Feb. To establish the Shenzhen Clear Rich Tech. Co., Ltd. to provide the Semiconductor Backend Testing service.
- 2012/May. Signs the cooperation memorandum, the expansion related marketing functions Development with Yoshikawa Semiconductor Co., Ltd.
- 2013.Dec. Achieved the 14th Industrial Excellence Award by Industry Agency .



YoungTek Electronics Corp.

Company Management Concept

Company Profile

經營理念：(Management Concept)

主人翁經營理念；下工程即是客戶。

Treat YTEC as your own company. (Host concept)

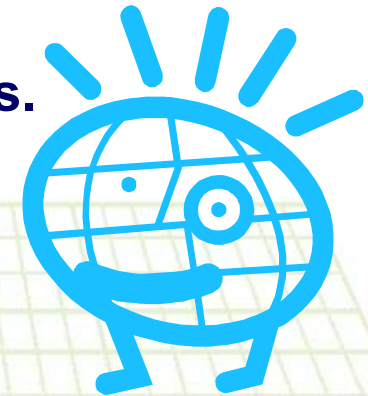
Treat all post projects and processes as our customers.

工作態度：(Working Attitude)

成功者找方法；失敗者找藉口。

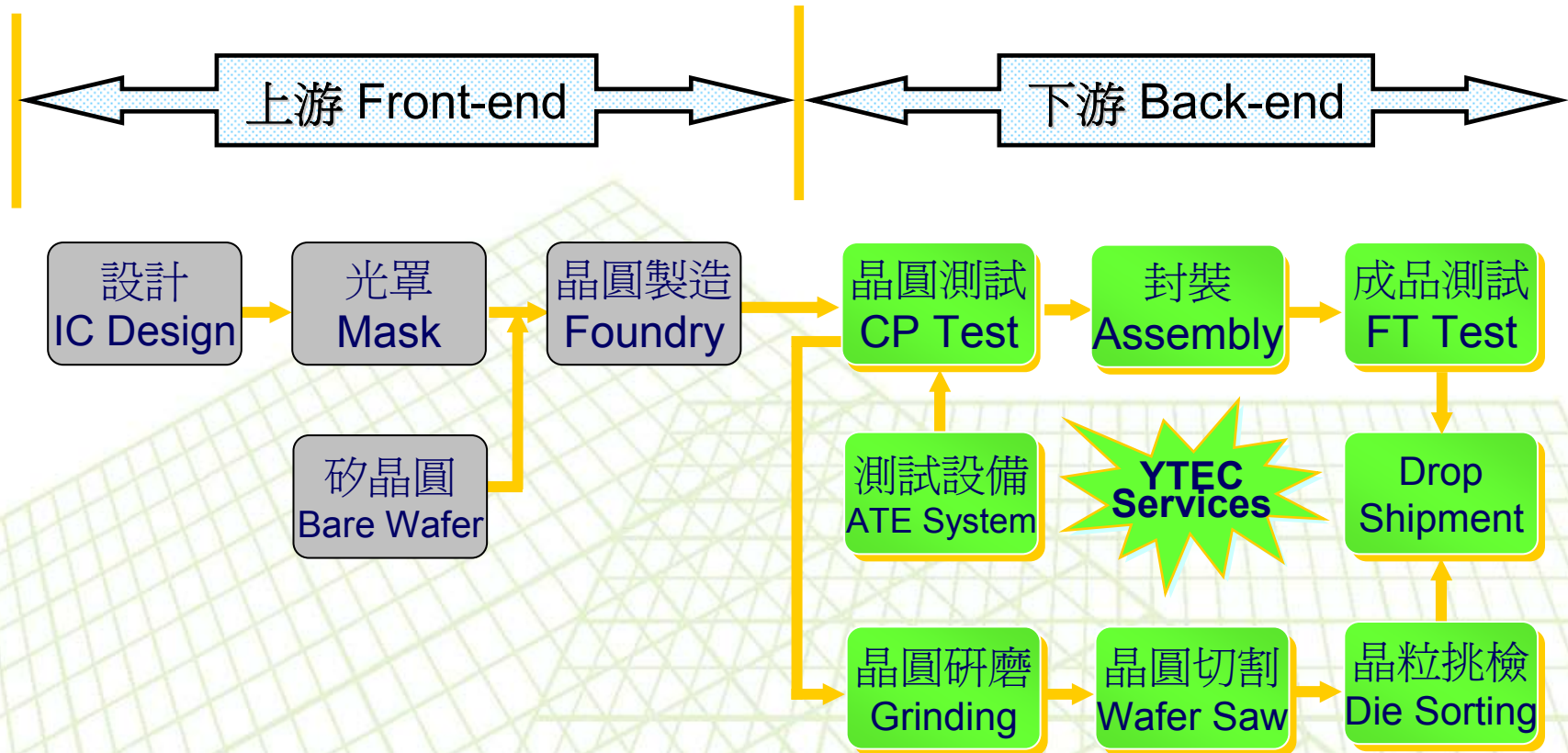
A successful person will find the way to overcome a challenge

Loser finds excuses.



IC OEM Services

Company Profile



專業測試代工服務(IC Testing OEM)

Company Profile

- ❑ **4"~12" Wafer testing (CP)**、**Test program and test kit development** (Probe-card design and manufacture).
- ❑ **IC packaging testing (FT)**、Package type : DIPs、T/SOPs、L/QFPs、QFN、L/BGA...
- ❑ **PC peripheral product、Logic、Analog、Mixed-signal**、No-volatile memory、MCU、**LCD driver IC**、High speed/ High pin count (Scud-1A 512C) testing.
CIS(CMOS Image Sensor)、RF、SoC product testing
- ❑ Others : Laser trimming、Lead scanning、Test program and test kit development technical support **Turn-key service** (For example: PKG assembly、Tape-reel、Drop-shipment...).



YTEC YoungTek Electronics Corp.

研磨、切割及挑檢代工服務 (Grinding, Sawing, P&P Service)

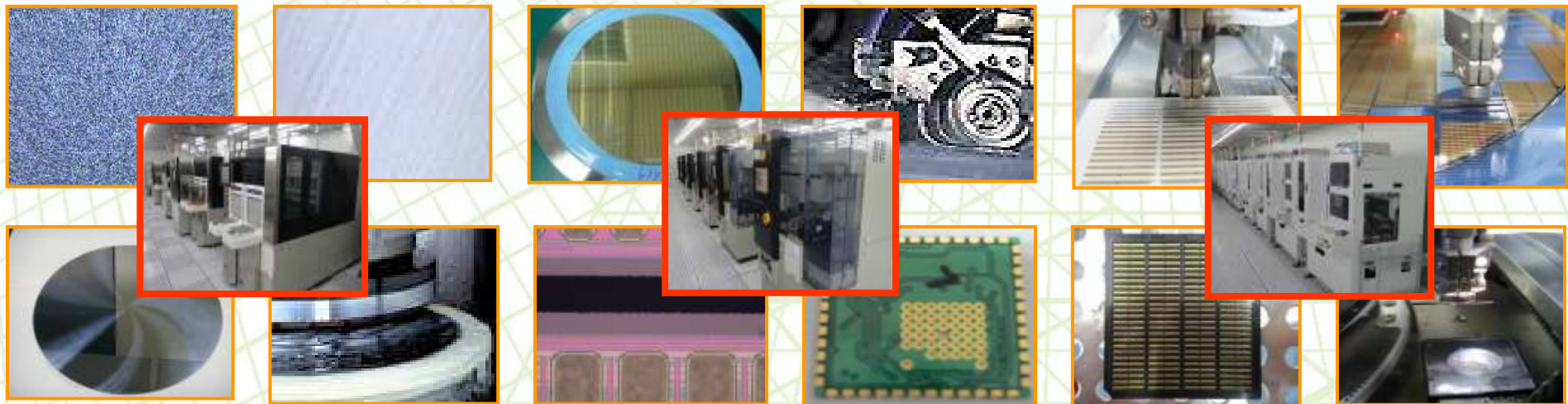
Company Profile

❑ IC Grinding、Sawing、Pick & Place

- 4"~12" Wafer back-side grinding、sawing、chip pick & place services for Consumer and gold bump COG products。
- Pick & Place Chip Back-side AOI inspection System inside。

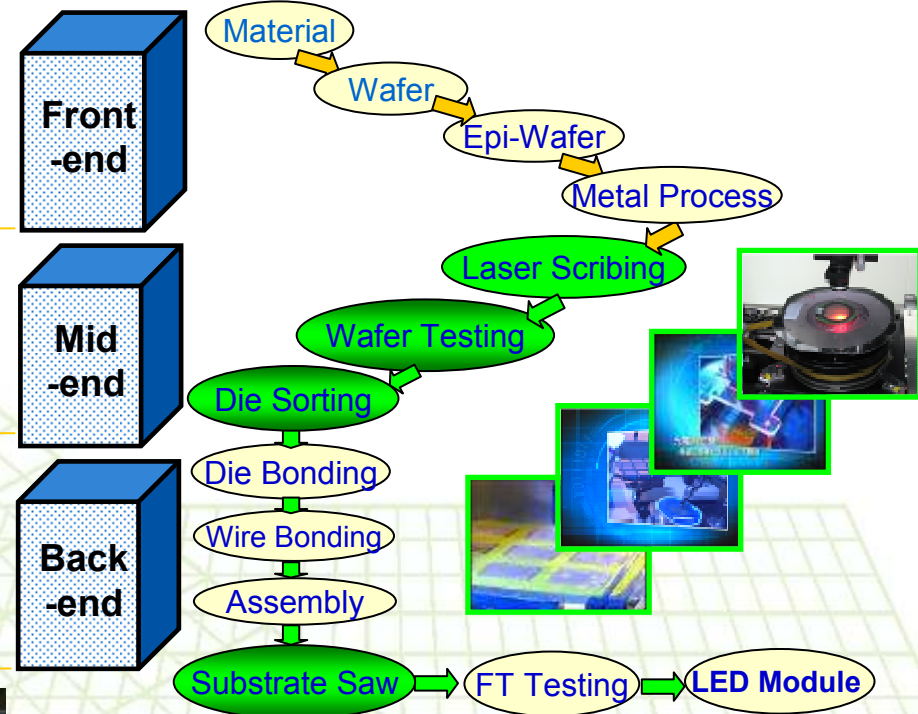
❑ Substrate Sawing

- LED package substrate、Glass substrate、Ceramic Substrate、Ceramic+FR4、Lead-frame、QFN package、HTCC、LTCC、PCB。



LED OEM Services

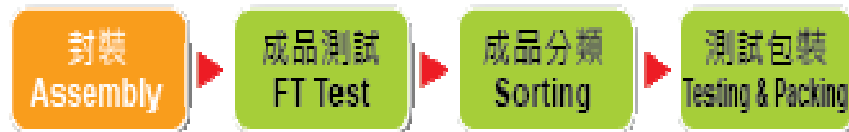
Company Profile



- **Front-end Product** : Wafer · Epi-Wafer , For example GaAs · GaAsP · AlGaAs · AlGaInP
- **Mid-end Product** : Laser Scribing · Wafer Testing and Pick & Place Die-sorting
- **Back-end Product** : Lamp · Display · SMD · IR transmission module · Optical Communication product · Substrate Saw

IC Testing Application Equipment

Company Profile



YT5100

全功能高速SoC IC
測試機

Scud-1A



YT6100

Fat Type
IC測試分類機



YT6200

QFN測試包裝機



YoungTek Electronics Corp.

YT5100 & Scud-1A IC Tester

Company Profile

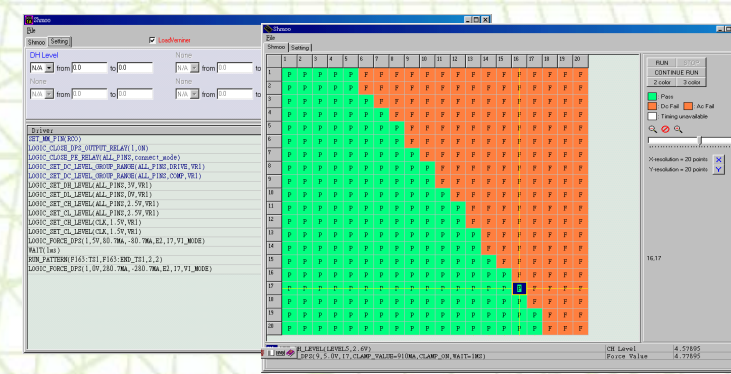
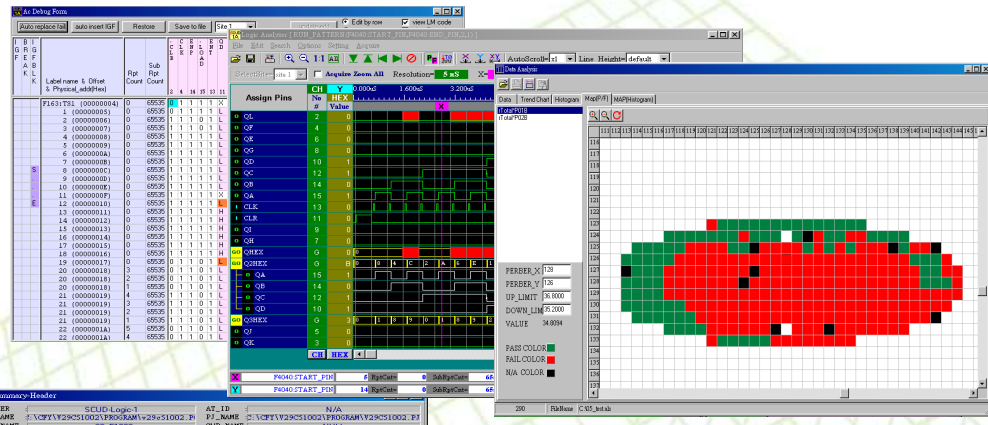
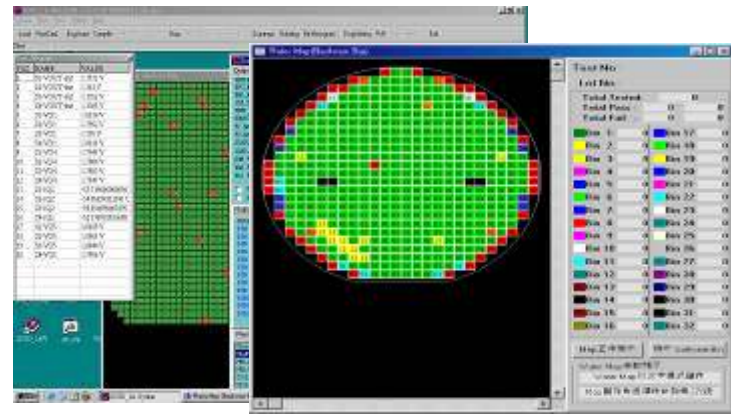
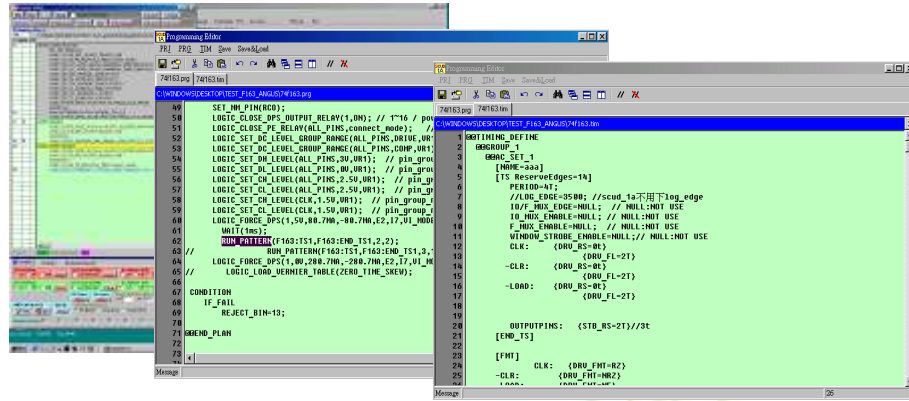
YT5100 High Speed Soc IC Tester

Scud-1A Fully Auto IC Tester



Scud-1A IC Tester System Environment

Company Profile



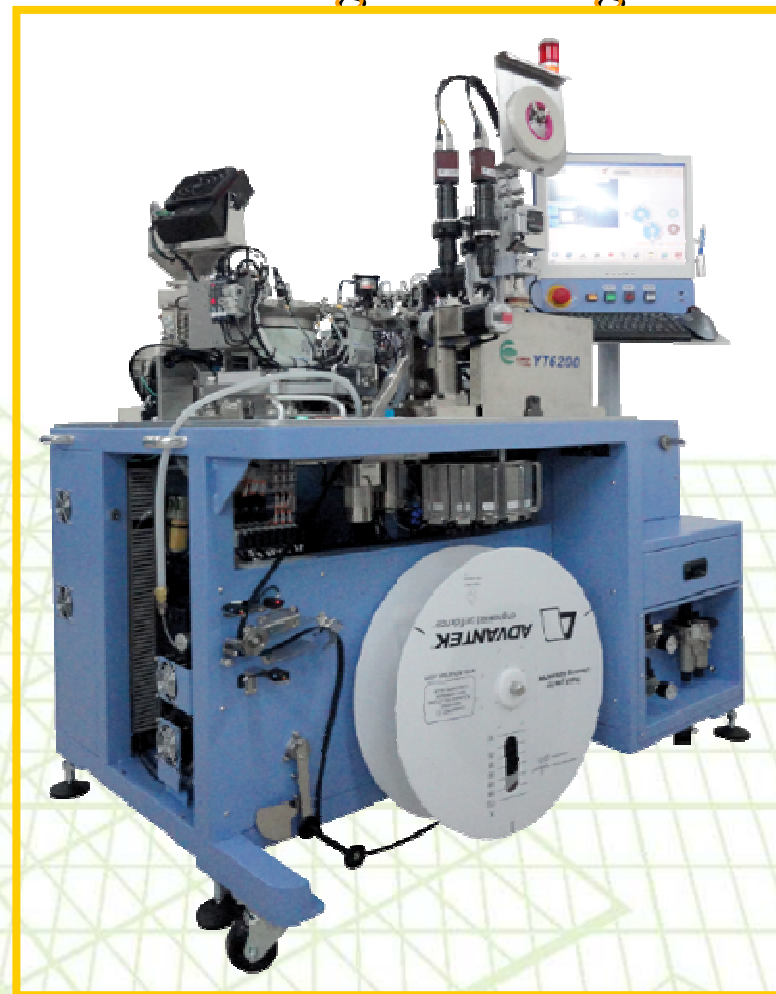
YT6110 IC Handler / YT6200 QFN Testing & Packing

Company Profile

YT6110 IC Handler



YT6200 QFN
Testing & Packing



YoungTek Electronics Corp.

影像感測模組測試設備 CCM (CMOS/Compact Camera Module)

Company Profile

影像感測模組測試設備

CCM YT3100



全自動影像感測模組測試設備

CCM YT3300



YT1100 LED Tester(YT1100 LED 測試機)

Company Profile

□ YTSD01 → YTSD02 → YT1000 HV LED Tester(8000V ESD)
→ YT1100 HV LED Tester (Multi-station)



YoungTek Electronics Corp.

DB-260 LED Prober

Company Profile

PB-260 LED Prober

PB-260 LED 晶粒檢測機 LED Chip Probe Station



自動換探針功能
針痕監控系統
晶粒外觀辨識功能



■ 鏡分球狀光高度6mm



■ 複合式吸光系統

WECON
威控自動化
www.wecon.com.tw

PB-260

特色：

- 自動換探針功能 **NEW**
- 針痕監控系統 **NEW**
- 探針高度檢知 **NEW**
- 雙面、晶片、PAD、粗化辨識系統
- 鏡分球狀光高度6mm
- 自動設定起始點(Auto Alignment key Search)
- 簡易的操作畫面
- Z軸採用直立式螺桿高速傳動動作系統穩定
- 可依客戶需求，同時安裝鏡分球狀顯微鏡或光系統
- 鏡分球狀固定座採用三軸精密調整平台
- 探針座使用快拆式底座，探針維護便利
- 可供客戶高選擇配專電或不專電平台

雙面、鏡角、PAD、粗化辨識



■ 綠色表示辨識為不良品格 ■ 灰色表示辨識為正常品格

Index Time Table :

Z軸上升高度 (mm)	time (msec)	晶粒間距(mm)			
		6	12	20	40
6	73	79	86	100	
8	75	81	88	102	
12	85	90	97	111	
14	90	95	102	116	

規格(Specification)

Chip 直徑	1.58mm to 1.61mm	晶粒間距	±.10"
Wiper 直徑	Φ3MM	晶粒種類	±.10"
X-Y 軸行程	210mm x 470mm	Z軸行程	520mm
X-Y 軸解像度	1 μm	分辨率	0.001"
X-Y 軸構造	±.10 μm (Max with 0.01)	■ 最大重量	0.10g
Z軸行程	100mm	重量	470kg
Z軸解像度	1 μm	正面負重	4.0 kg/cm ² / 48 MPa
Z軸構造	2.4 μm	電壓	標準220V / 110V, 80Hz, 5A
Communication Interface	標準1公尺	TTL, RS232	
		Wipe - 110mm, Spin - 812mm, Height - 1800mm	
		Drawer and Area 1.8M ²	

規格如有變更，恕不另行通知。

威控自動化機械股份有限公司
WECON AUTOMATION CORP.

新竹市埔頂路99巷127號
No.127, Alley 99, Putin Rd., Hsinchu City, Taiwan
TEL:886-3-5734757 FAX:886-3-5734760

www.wecon.com.tw

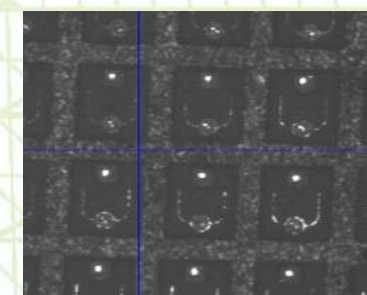
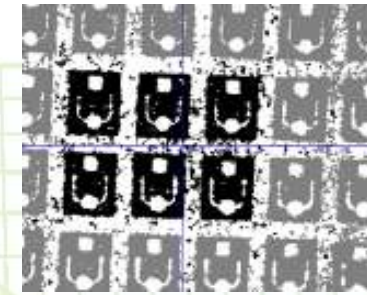
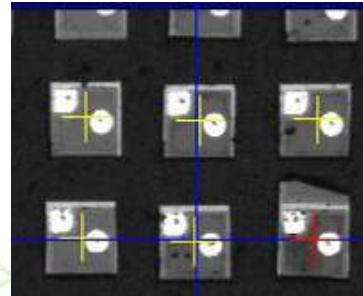


YoungTek Electronics Corp.

LS-360 LED Sorter

Company Profile

LS-360 LED Sorter



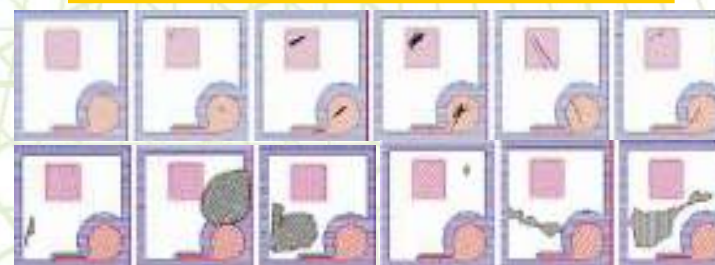
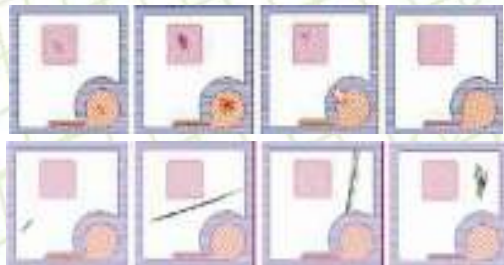
自動光學檢測系統 (Auto Optical Inspection)

Company Profile

YT 5311 LED Chip/Wafer/Mask
半自動光學檢測系統



YT 2800 LED Chip/Wafer/Mask
全自動光學檢測系統



YoungTek Electronics Corp.

自動光學檢測應用(AOI Application)

Company Profile

被動元件、LED
產品六面外觀檢測



YT2300

元件六面外觀
檢測機

YT2330

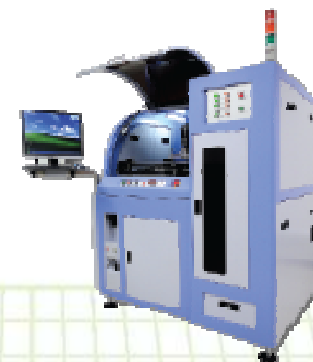
雙軌元件六面外觀
檢測機

LED及被動元件散熱基板
產品之外觀檢測



YT2700

LED及被動元件
散熱基板之2D AOI
檢測機



YT2705

LED及被動元件
散熱基板之2D AOI
檢測機
(Auto Load/Unload)



YoungTek Electronics Corp.

自動光學檢測系統 (Auto Optical Inspection)

Company Profile

YT 2300(YT2330) Component AOI

自動光學檢測系統(雙軌)



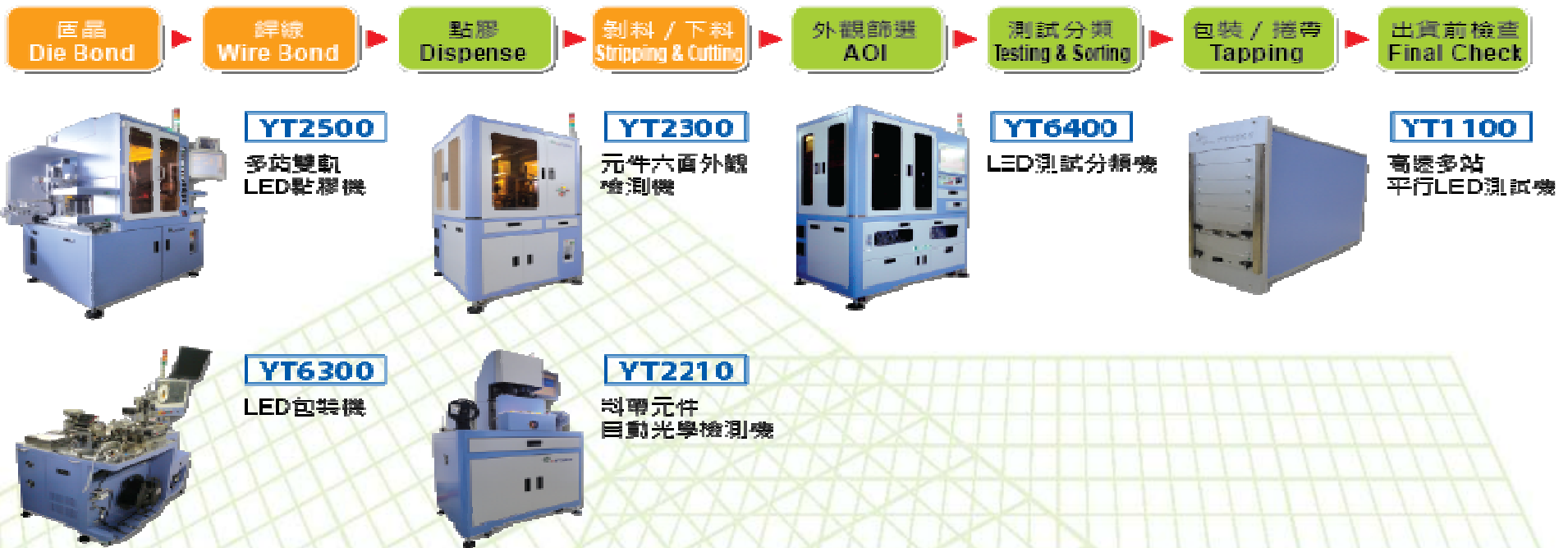
Reel type taped products:

- Resistor
- Capacitor
- Inductor
- LED
- IC
- Relay
- Connector
- Fuse



LED Assembly Application Equipment

Company Profile



DB-159 Die Bonder & YT2500 LED Dispenser

Company Profile

DB-159 Die Bonder

YT2500 LED Dispenser

DB-159 泛用型高速固晶机
High Speed Multiple Applications Epoxy Die Bonder

UPH **15K**
Cyc. Time 230ms



超宽工作行程: 120 x 280mm
顶针自动调高、防撞设计
多种制程选择
开放式参数设定

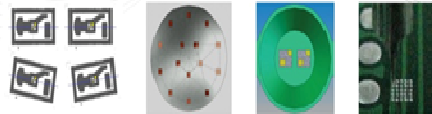
WECON
威控自动化

www.wecon.com.tw

DB-159

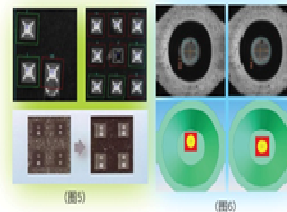
多制程选择

- 个别产品角度识别功能(图1)
- CAD程式输入档案功能(图2)
- 多晶磊功能(图3)
- 拾取点检测功能(图4)
- 多图叠层导晶功能



影像辨识系统 (图5)

- 可自行外观检测标准
功能: PAD污染检查、异物、破裂、发亮及污染检查
- 具有缺晶、掉晶检查功能
- 晶化晶粒可正确判断
- 晶磊位置设定能以方形□或圆形○标底显示, 以提高设定精度 (图4)
- 晶磊拾取修正功能



规格(Specification)

整体性能	UPH 15K (120x120mm制程, 或2xT4制程)	影像辨识系统 CCD-Resolution	256 Gray level 1024x768 pixel
Bonding accuracy	X/Y ±0.04 / ±0.2F	识别精度	0.4 pixel
Max. Die size	Max. 120mm die	每小时产量 (steps)	6000 step
晶片尺寸范围	4" (Max)	Dimension	13100 x 12000 x 1000-4 mm
Water Ring Size	6" (Max)	环境温度	AC220 / AA(Normal, 10A/Phase) / 2200W
Whirling Range	φ120mm (L.P.)	Power Req.	5 hp/100
Die size	6mm ~ 80mm (45mm以上需加磁吸)	Pneumatic source	0.8kg/cm ² Substr. Vac. Pump
工作行程 Length	117" (2900mm)	Vacuum	
Width	41" (1030mm)		
产品高度 Height	40mm		
最低使用温度	Assist CCD = 1.7" XCD X12.4mm Stage		

规格如有变更, 恕不另行通知

威控自动化机械股份有限公司
WECON AUTOMATION Corp.

台湾新竹市福国路14号12楼
No.127, Alley 95, Plain Rd, Hsinchu City, Taiwan
TEL:886-3-5734757 IFAX:886-3-5734760

www.wecon.com.tw



YoungTek Electronics Corp.

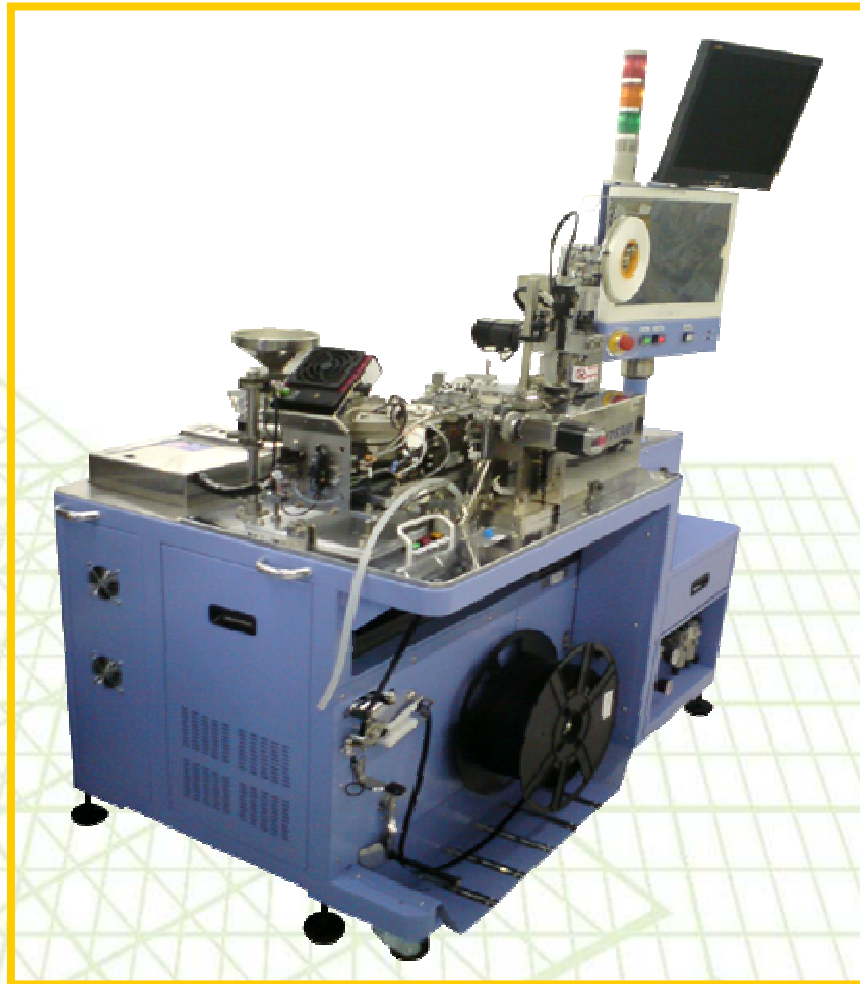
YT6400 LED Handler & YT6300 LED Tapping

Company Profile

YT6400 LED Handler



YT6300 LED Tapping



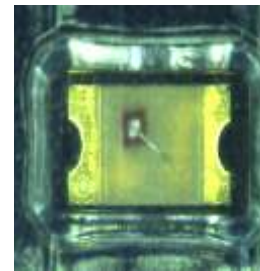
YoungTek Electronics Corp.

自動光學檢測系統 (Auto Optical Inspection)

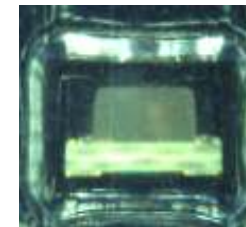
Company Profile

YT 2210 Reel Type Components

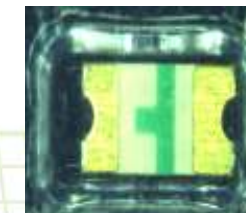
自動光學檢測系統



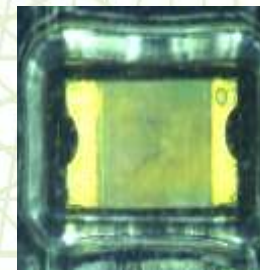
Polarity inverse package



Tilt



Over turn



Mixed package



Empty



YoungTek Electronics Corp.

Revenue Growth



2012&2013 Combine Monthly Revenue

Company Profile

NT\$(Thousand)

Business Item/Month	Jan.	Feb	Mar	Apr	May	Jun.	Jul.	Aug.	Sep	Oct.	Nov.	Dec.	Total(e)	Share(%)	
切割挑檢代工 Sawing & Sorting OEM	2012	74,341	100,273	114,355	119,873	124,099	126,741	129,216	119,084	127,305	119,713	112,670	118,285	1,385,955	37.40%
	2013	103,440	89,967	111,738	111,642	104,798	108,814	112,497	113,890	115,743	108,105	103,347	105,030	1,289,011	35.44%
	YoY	39.14%	-10.28%	-2.29%	-6.87%	-15.55%	-14.14%	-12.94%	-4.36%	-9.08%	-9.70%	-8.27%	-11.21%	-6.99%	
	MoM	-12.55%	-13.02%	24.20%	-0.09%	-6.13%	3.83%	3.38%	1.24%	1.63%	-6.60%	-4.40%	1.63%		
測試代工 Testing OEM	2012	127,925	145,751	155,306	178,992	193,854	192,035	208,696	184,208	166,191	180,667	156,769	145,921	2,036,315	54.95%
	2013	169,596	137,091	159,963	185,757	174,540	148,299	167,029	156,156	158,739	150,852	140,718	189,991	1,938,731	53.30%
	YoY	32.57%	-5.94%	3.00%	3.78%	-9.96%	-22.78%	-19.97%	-15.23%	-4.48%	-16.50%	-10.24%	30.20%	-4.79%	
	MoM	16.22%	-19.17%	16.68%	16.12%	-6.04%	-15.03%	12.63%	-6.51%	1.65%	-4.97%	-6.72%	35.02%		
機器組裝等產品 銷售 Own Product Sales	2012	5,011	5,077	21,899	29,823	83,454	39,695	32,838	12,097	17,374	16,741	9,982	9,819	283,810	7.66%
	2013	23,543	42,490	62,095	58,475	50,678	45,760	38,273	21,051	30,352	24,559	4,449	7,690	409,415	11.26%
	YoY	369.83%	736.91%	183.55%	96.07%	-39.27%	15.28%	16.55%	74.02%	74.70%	46.70%	-55.43%	-21.68%	44.26%	
	MoM	139.77%	80.48%	46.14%	-5.83%	-13.33%	-9.70%	-16.36%	-45.00%	44.18%	-19.09%	-81.88%	72.85%		
營業收入淨額 (Unit:K) Sales Revenue (Net)	2012	207,277	251,101	291,560	328,688	401,407	358,471	370,750	315,389	310,870	317,121	279,421	274,025	3,706,080	100.0%
	2013	296,579	269,548	333,796	355,874	330,016	302,873	317,799	291,097	304,834	283,516	248,514	302,711	3,637,157	100.0%
	YoY	43.08%	7.35%	14.49%	8.27%	-17.79%	-15.51%	-14.28%	-7.70%	-1.94%	-10.60%	-11.06%	10.47%	-1.86%	
	MoM	8.23%	-9.11%	23.84%	6.61%	-7.27%	-8.22%	4.93%	-8.40%	4.72%	-6.99%	-12.35%	21.81%		
營業收入淨額(系 計) Sales Revenue (Total)	2012	207,277	458,378	749,938	1,078,626	1,480,033	1,838,504	2,209,254	2,317,366	2,835,513	3,152,634	3,432,055	3,706,080	--	--
	2013	296,579	566,127	899,923	1,255,797	1,585,813	1,888,686	2,206,485	2,497,582	2,802,416	3,085,932	3,037,867	3,637,157		
	YoY	43.08%	23.51%	20.00%	16.43%	7.15%	2.73%	-0.13%	7.78%	-1.17%	-2.12%	-11.49%	-1.86%		
	MoM	3.34%	-16.84%	19.66%	9.46%	-6.07%	-7.96%	8.72%	-3.39%	1.64%	-5.66%	-5.75%	20.88%		
總計代工成長 OEM Growth (Total)	2012	202,266	246,024	269,661	298,865	317,953	318,776	337,912	303,292	293,496	300,380	269,439	264,206	3,422,270	--
	2013	273,036	227,058	271,701	297,399	279,338	257,113	279,526	270,046	274,482	258,957	244,065	295,021	3,227,742	
	YoY	34.99%	-7.71%	0.76%	-0.49%	-12.14%	-19.34%	-17.28%	-10.96%	-6.48%	-13.79%	-9.42%	11.66%	-5.68%	
	MoM	3.34%	-16.84%	19.66%	9.46%	-6.07%	-7.96%	8.72%	-3.39%	1.64%	-5.66%	-5.75%	20.88%		

□ Note : (e)表示預估值(estimate)。

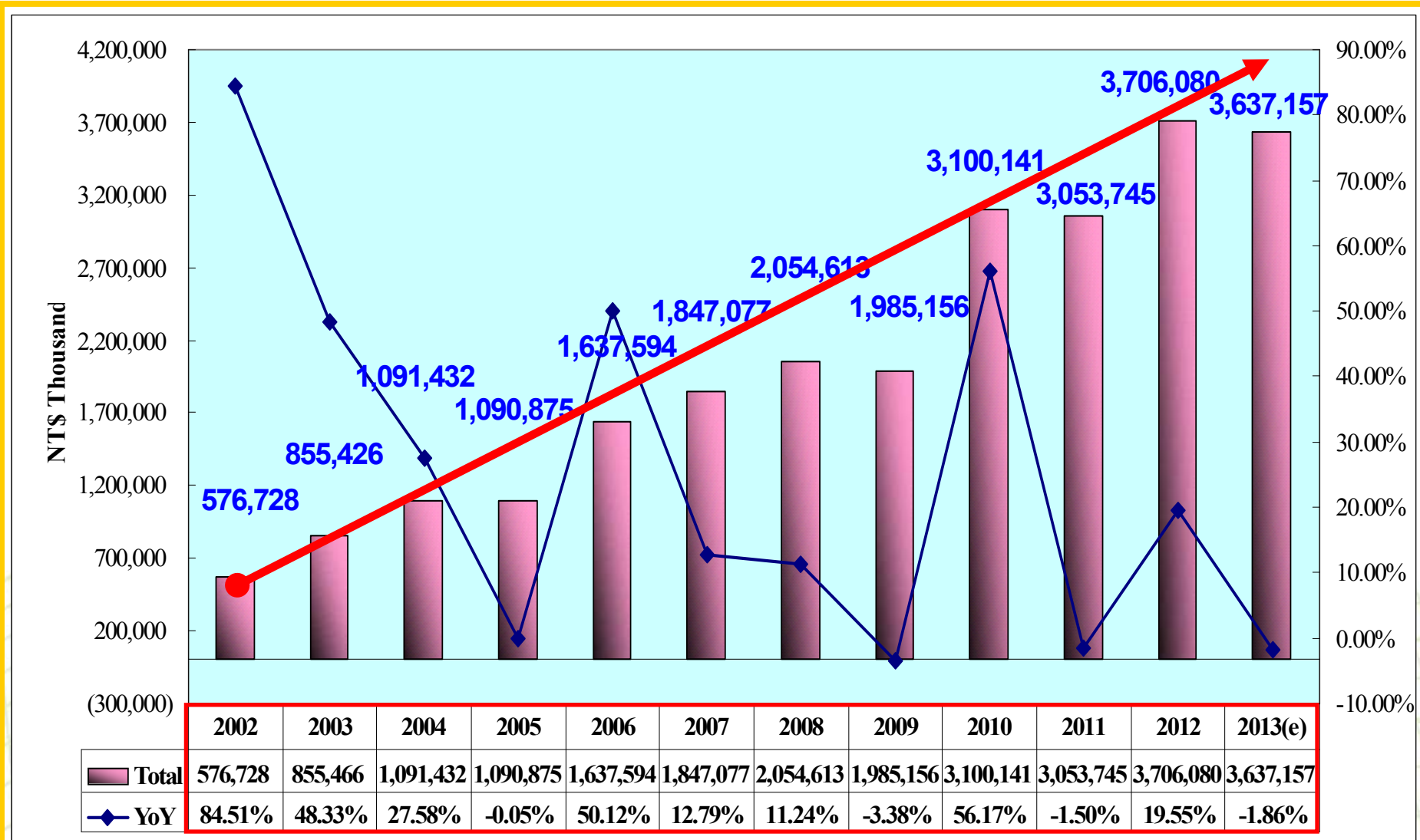
2013&2014 Combine Monthly Revenue

Company Profile
NT\$(Thousand)

Business Item/Month	Jan.	Feb	Mar	Apr	May	Jun.	Jul.	Aug.	Sep	Oct.	Nov.	Dec.	Total	Share(%)	
切割挑檢代工 Sawing & Sorting OEM	2013	103,440	89,967	111,738	111,642	104,798	108,814	112,497	113,890	115,743	108,105	103,347	105,030	103,440	34.88%
	2014	100,469												100,469	42.51%
	YoY	-2.87%												-2.87%	
	MoM	-4.34%													
測試代工 Testing OEM	2013	169,596	137,091	159,963	185,757	174,540	148,299	167,029	156,156	158,739	150,852	140,718	189,991	169,596	57.18%
	2014	130,233												130,233	55.11%
	YoY	-23.21%												-23.21%	
	MoM	-31.45%													
機器組裝等產品銷售 Own Product Sales	2013	23,543	42,490	62,095	58,475	50,678	45,760	38,273	21,051	30,352	24,559	4,449	7,690	23,543	7.94%
	2014	5,630												5,630	2.38%
	YoY	-76.09%												-76.09%	
	MoM	-26.79%													
營業收入淨額 (Unit:K) Sales Revenue (Net)	2013	296,579	269,548	333,796	355,874	330,016	302,873	317,799	291,097	304,834	283,516	248,514	302,711	296,579	100.0%
	2014	236,332												236,332	100.0%
	YoY	-20.31%												-20.31%	
	MoM	-21.93%													
營業收入淨額(系 計) Sales Revenue (Total)	2013	296,579	566,127	899,923	1,255,797	1,585,813	1,888,686	2,206,485	2,201,003	2,802,416	3,085,932	3,334,446	3,637,157	--	--
	2014	236,332													
	YoY	-20.31%													
	MoM	-21.93%													
總計代工成長 OEM Growth (Total)	2013	273,036	227,058	271,701	297,399	279,338	257,113	279,526	270,046	274,482	258,957	244,065	295,021	273,036	--
	2014	230,702												230,702	
	YoY	-15.50%												-15.50%	
	MoM	-21.80%													

2002~2012 Combine Revenue Growth

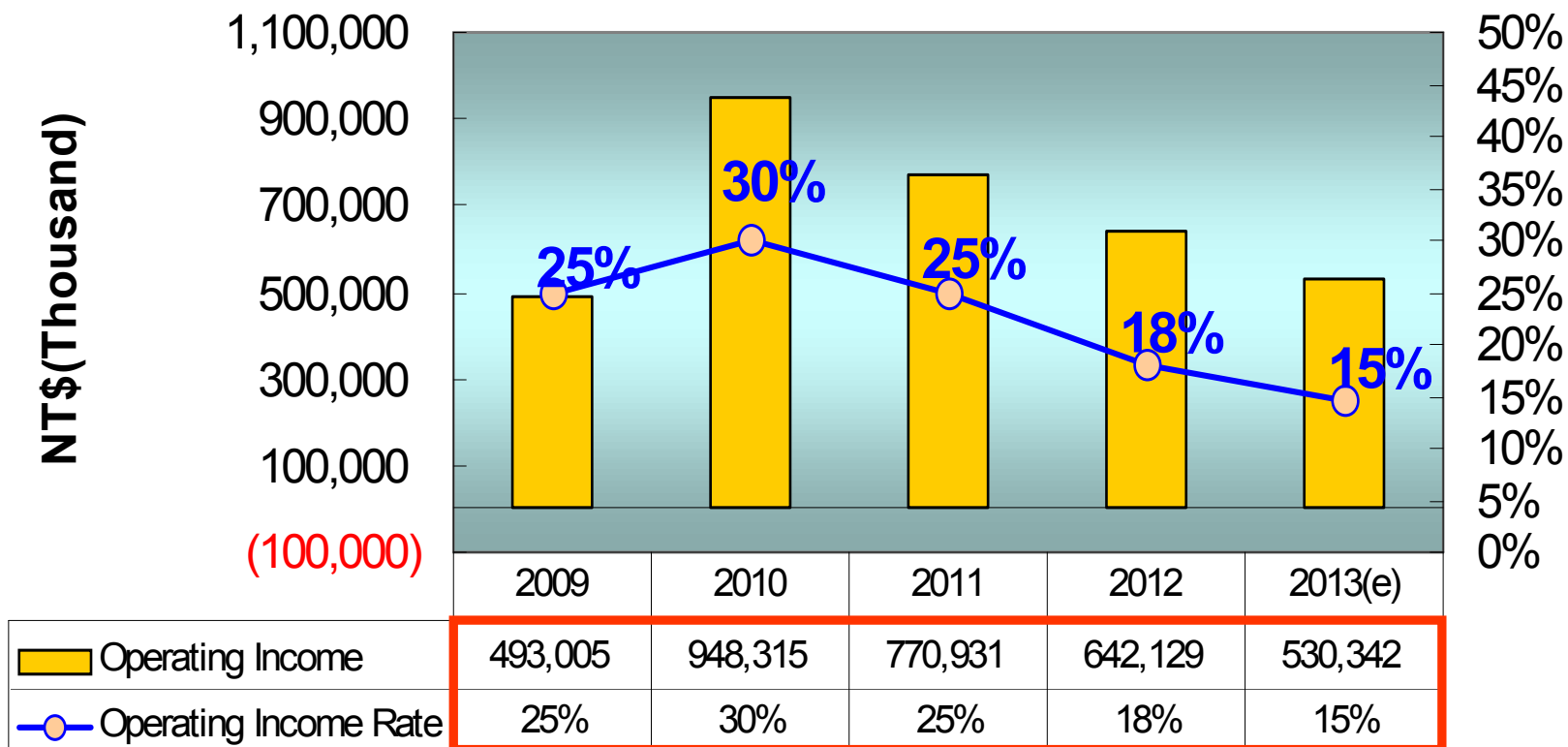
Company Profile



Note : (e)表示預估值(estimate)。

2009~2013 Combine Operating Income

Company Profile

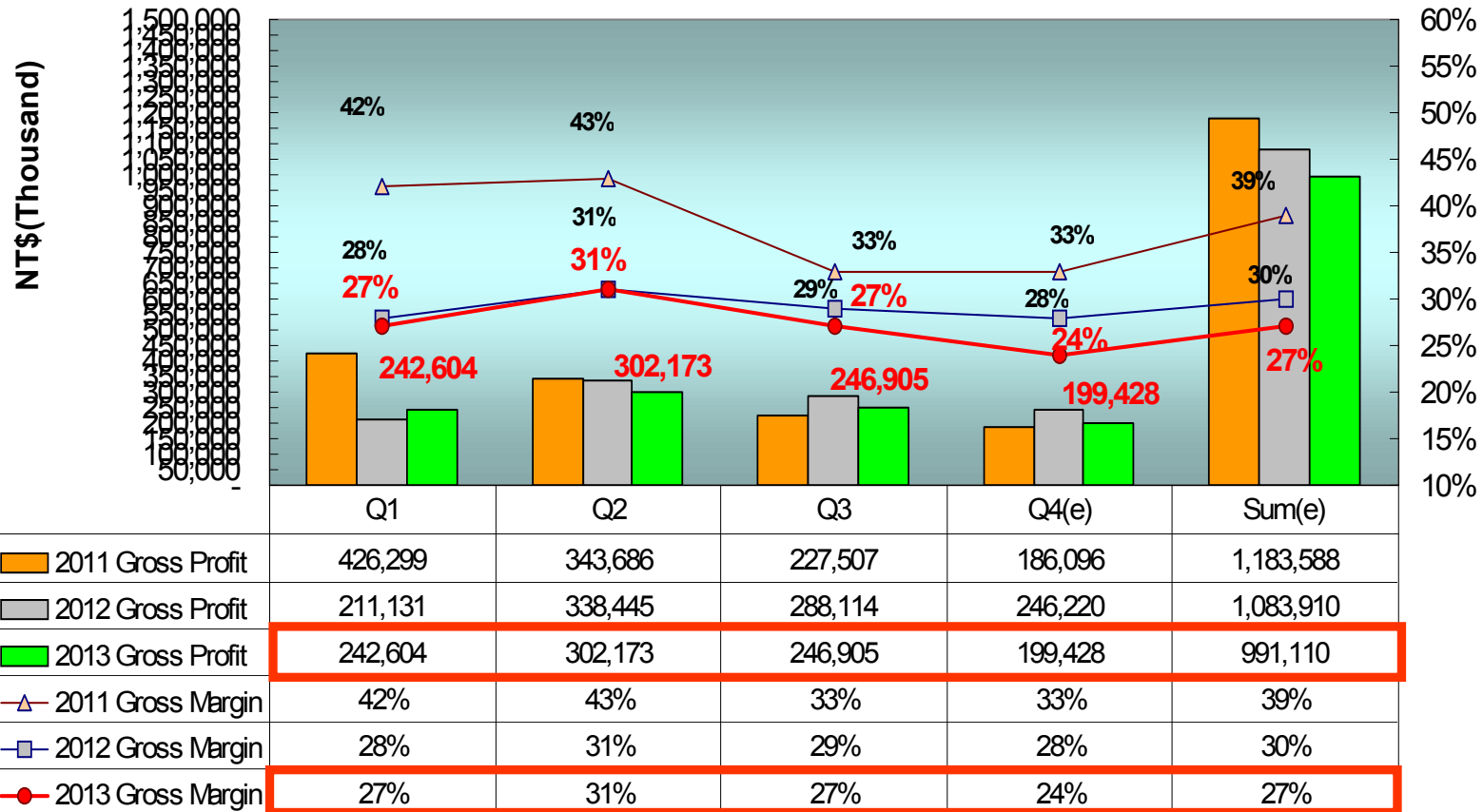


Note : (e)表示預估值(estimate)。



2011~2013 Combine Gross Profit

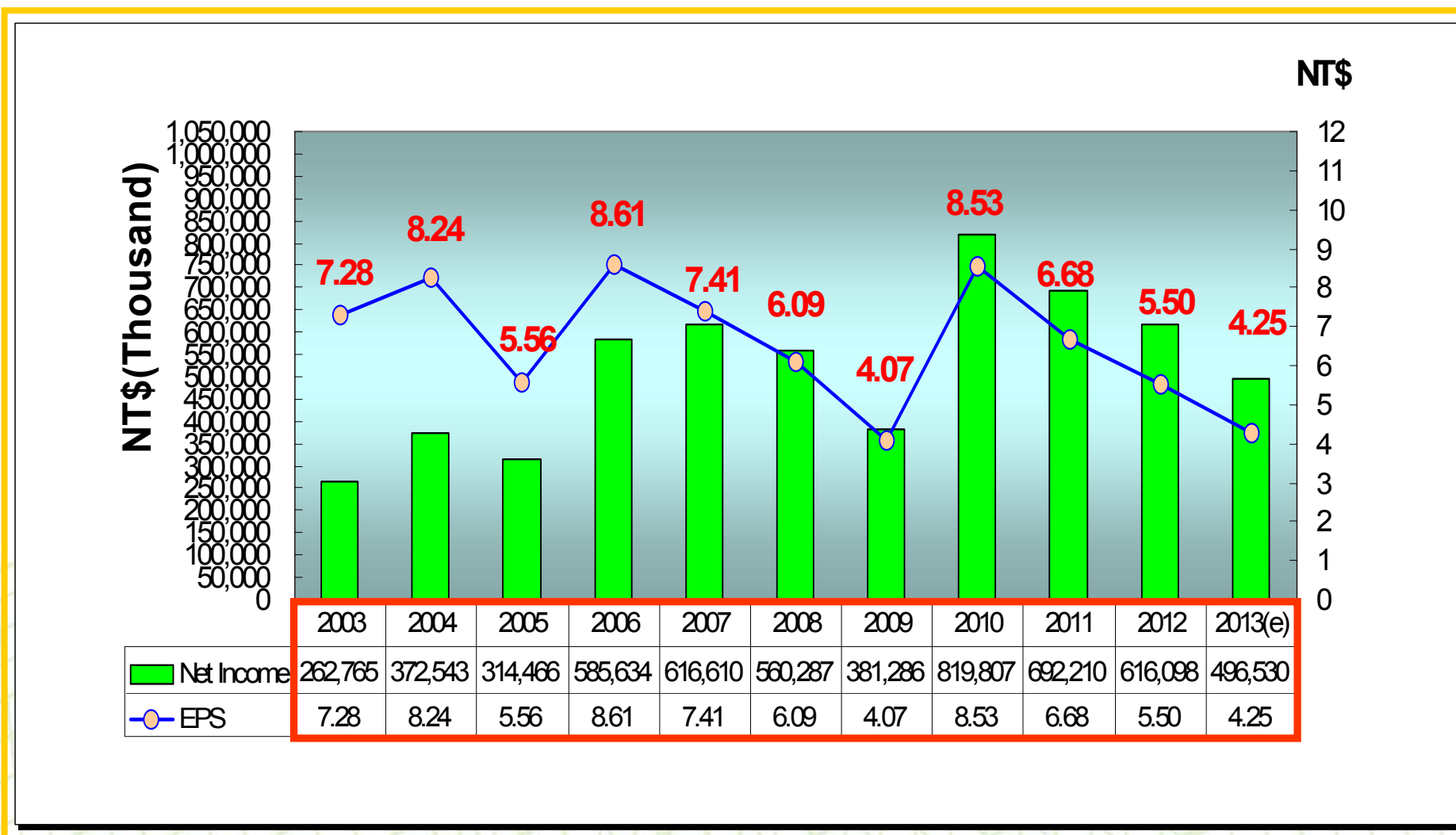
Company Profile



Note : (e)表示預估值(estimate)。

Yearly Net Income & EPS

Company Profile



Note : (e)表示預估值(estimate)。

Business Expansion Status(相關產業之狀況)

Company Profile

- **半導體及光電切挑代工服務**：進入2014年公司1月份合併營收、MOM微降-2.9%、符合預期、因此將持續追蹤、另 LED在新的應用提昇下樂觀預期在LED挑檢已擴充之產能 應可適時提供市場成長之需求、相信可挹助公司之營收成長。
- **IC測試系統開發**：2006年3月份與美商安捷倫(Agilent)科技(新公司名稱: Verigy惠瑞捷)簽訂IC測試系統技術合作、除了2006年已陸續支付久元簽約金而達成階段性目標、因而提昇公司營收和獲利。另已在雙方合作互動下提昇測試機技術層次及銷售量、更上層樓。
- **CIS、CCM、LED後段生產設備及AOI設備開發**：成功開發完成CIS(CMOS影像感測系統)、具備高速影像處理及完整電性測試之解決方案、並導入代工服務、挹助營收。自行開發之CCM(影像感測模組測試設備)、LED後段生產設備及AOI(自動光學檢測系統)等設備、因應市場需求將擴展銷售、AOI設備研發係以解決半導體及光電等產業在目檢之視覺盲點並可大幅節省人力、並已將光電技術結合影像分析等與自動化設備設計、成功研發出各類型外觀檢測機。2014年1月合併營收MOM微降-26.8%、將持續追蹤、相信在持續開發新產品及功能提昇下、展望未來應可持續挹助業績成長之動力。
- **半導體代工服務**：進入2014年1月業績YOY微降-23.2%、為年假影響、因此將持續追蹤、而YTEC在持續開發新產品與互補及平衡的產品線發酵下(如LCD,RF..etc)、展望未來應可持續挹助業績成長之動力。



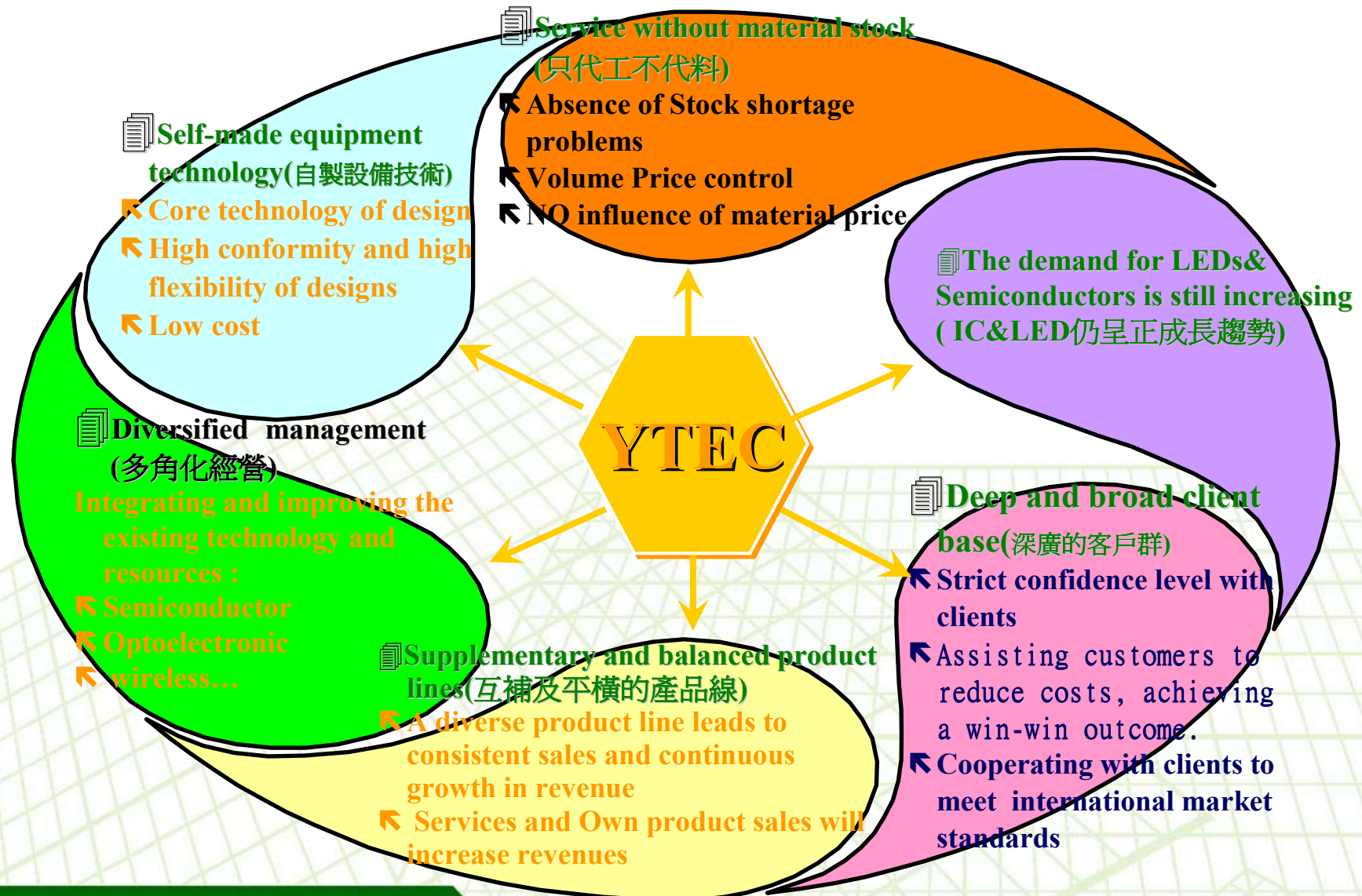
Share payout composition and history

Company Profile

Year	95年度 (2006)	96年度 (2007)	97年度 (2008)	98年度 (2009)	99年度 (2010)	100年度 (2011)	101年度 (2012)	102年度 (2013)
	配94年度 profit(2005)	配95年度 Profit(2006)	配96年度 Profit(2007)	配97年度 Profit(2008)	配98年度 Profit(2009)	配99年度 Profit(2010)	配100年度 Profit(2011)	配101年度 Profit(2012)
Cash(NTD)	\$2.61	\$4.00	\$4.00	\$3.00	\$3.00	\$4.671	\$5.238	\$4.659
Free Pair stock of	\$0.87	\$1.00	\$0.50	\$0.10	\$0.10			0.098
Stock Capital reserve fund	--	--	--	--	--	\$0.093	\$0.095	--
EPS(NTD)	\$5.56	\$8.61	\$7.41	\$6.09	\$4.07	\$8.53	\$6.68	\$5.50

Company competitive advantages

Company Profile



公司願景 **Company Mission**

Company Profile

著眼於國內外市場的開拓，讓久元成爲立足台灣的整合性後段IC及LED代工服務廠，並朝放眼世界的自有產品、自有品牌邁進。

Based on the domestic and international marketing development, YTEC has gotten a foothold as an integrated back-end IC&LED OEM factory. YTEC moves forward, with it's own products, and Own Bench Marks.



Q & A

Company Profile

Thank you very much



YoungTek Electronics Corp.