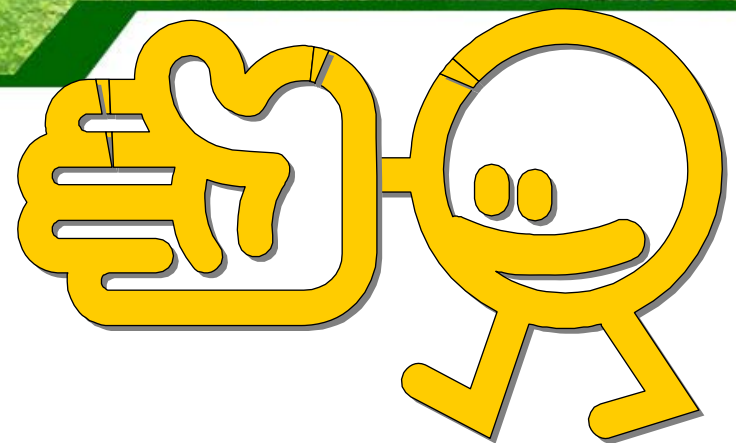


# Welcome



*Welcome*



## Brief Introduction

June 9th, 2015



# 2015 VISIT SCHEDULE @久元

*Company Profile*

## Contents

## Time

- |   |             |
|---|-------------|
| <input type="checkbox"/> Brief Introduction of YTEC | 14:00~14:20 |
| <input type="checkbox"/> Q & A                      | 14:20~15:30 |
| <input type="checkbox"/> Line Tour (Free)           | 15:30~16:00 |

# Contents

*Company Profile*

- Brief Introduction**
- Factory Overview**
- Company Milestone**
- Company Management Concept**
- OEM Services**
- R&D Roadmap and Own Product Development**
- Revenue Growth**
- Company Mission**



# Brief Introduction

*Company Profile*

**Found Time** : 1991/July

**Chairman** : Bily Wang

**President of Service Group** : Jeff Chang

**President of Own Product Group** : Glen Chen

**Employee** : 1210 persons

**Capital** : NTD 1272million (USD 40.52 million)

**Factories** : **Plant 1** : Special & substrate sawing

**SBIP Plant** : IC Back-end turn-key service, ATE&AOI

**Li Hsin Plant** : LED Back-end turn-key service

**An Ping Plant** : LED Testing & sorting

**Xiamen Plant** : LED Testing & sorting

**Changzhou Plant** : LED Testing & sorting

**WuJiang MightYtek Plant** : IC Assembly & Testing

**Business Items** :

1. **Semiconductor and LED OEM**: IC testing, wafer sawing, grinding, chip sorting and LED testing, laser scribing, sorting and substrate sawing.

2. **Design, manufacture and sales of semiconductor equipments**: Full-function IC tester, logic ,analog, Mixed-Signal IC Tester , LED tester, prober and sorter, CCM equipments, AOI system.



**YTEC** YoungTek Electronics Corp.

# Factory Overview

Company Profile

Plant #1



SBIP Plant



Li-Hsin Plant



Hsinchu

Tainan

An-Ping Plant



YoungTek Electronics Corp.

# Factory Overview

Company Profile

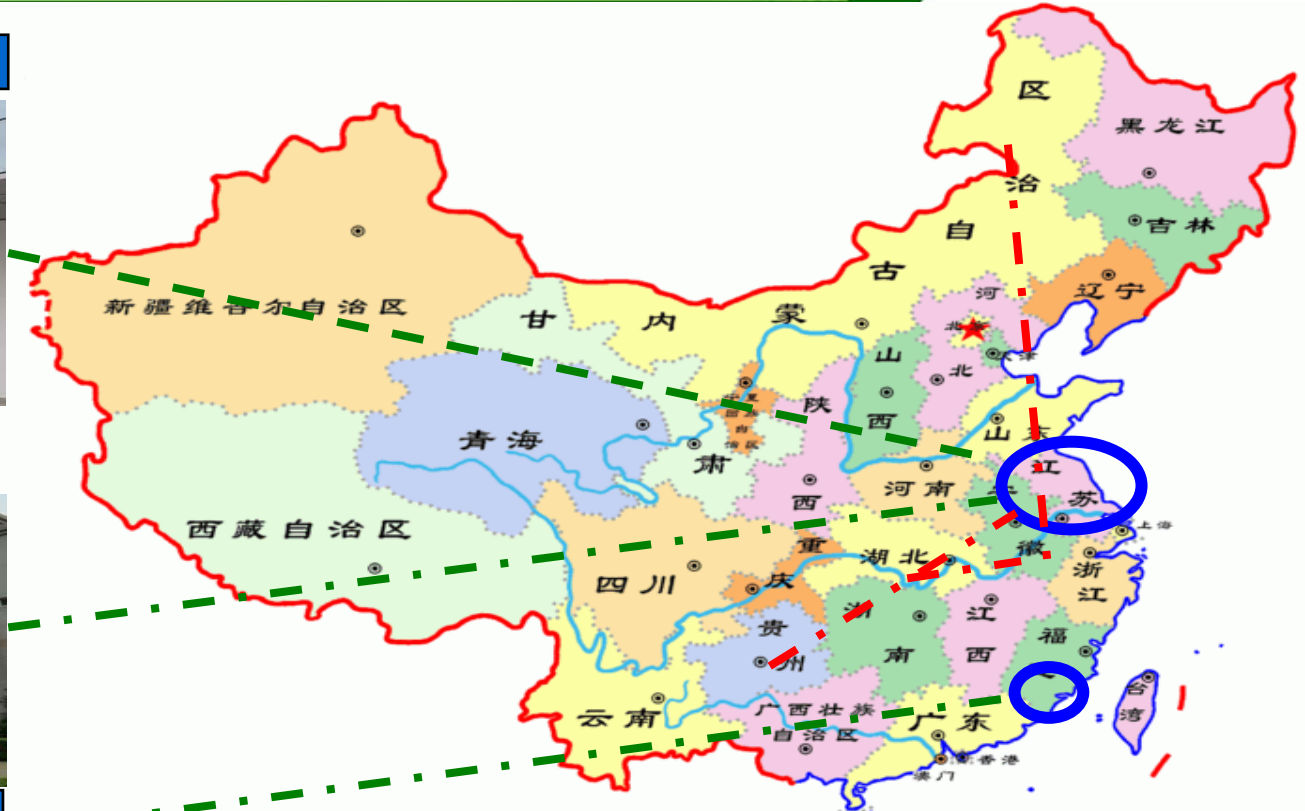
Changzhou YT Plant



Wujiang MightYtek Plant



Xiamen YT Plant



YoungTek Electronics Corp.

# Company Milestone

Company Profile

- 1991/Jul. YTEC was founded and the capital is NTD \$ 5 million.
- 1998/Oct. Develop logic tester (Goblin) with 5 MHz/40 pins.
- 2000/Mar. Achieved the certification of ISO 9001
- 2000/Jul. Full-function IC tester was verified by industry agency with predominant product development project.
- 2002/Nov. SEC (Securities and Exchange Commission) approve YTEC to public stock.
- 2003/Nov. LED OEM service was established.
- 2003/Dec. Obtain OTC certification.
- 2004/Mar. Got the approval to establish the branch in Hsin chu SBIP.
- 2004/Mar.29 Listed in Taiwan stock exchange. (Stock No.: 6261)
- 2006/Mar. Signs the cooperation agreement of the IC test system technology. with Agilent Technologies
- 2006/Dec. Achieved the certification of ISO 14001 and OHSAS 18001.
- 2007/Jul. Develop Tainan An Ping plant for LED sorting.
- 2008/May. Develop Li Hsin plant for LED test & sorting.
- 2008/Oct. Achieved the certification of ISO/TS 16949.
- 2009/May. To establish the Xiamen Young Tek Electronics Co., Ltd. to provide the LED Backend Turn-key service.
- 2009/Jun. Solar silicon substrate inspection system was verified Science Park Administration with development project.
- 2010/Mar. Develop SBIP plant for wafer grinding & sawing.
- 2010/Sep. To establish the Changzhou YoungTek Electronics Co., Ltd. to provide the LED Backend Turn-key service.
- 2011/Jan. Achieved the certification of IECQ QC080000.
- 2011/Dec. To establish the WuJiang MightYtek Semiconductor Co., Ltd. to provide the Semiconductor Backend Testing & Ass'y Turn-key service.
- 2012/Feb. To establish the Shenzhen Clear Rich Tech. Co., Ltd. to provide the Semiconductor Backend Testing service.
- 2012/May. Signs the cooperation memorandum, the expansion related marketing functions Development with Yoshikawa Semiconductor Co., Ltd.
- 2013.Dec. Achieved the 14th Industrial Excellence Award by Industry Agency .



**YTEC** YoungTek Electronics Corp.



# Company Management Concept

Company Profile

## 經營理念：(Management Concept)

主人翁經營理念；下工程即是客戶。

Treat YTEC as your own company. (Host concept)

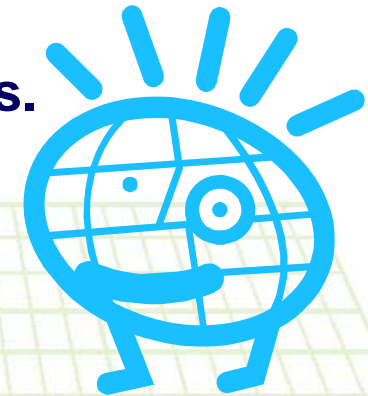
Treat all post projects and processes as our customers.

## 工作態度：(Working Attitude)

成功者找方法；失敗者找藉口。

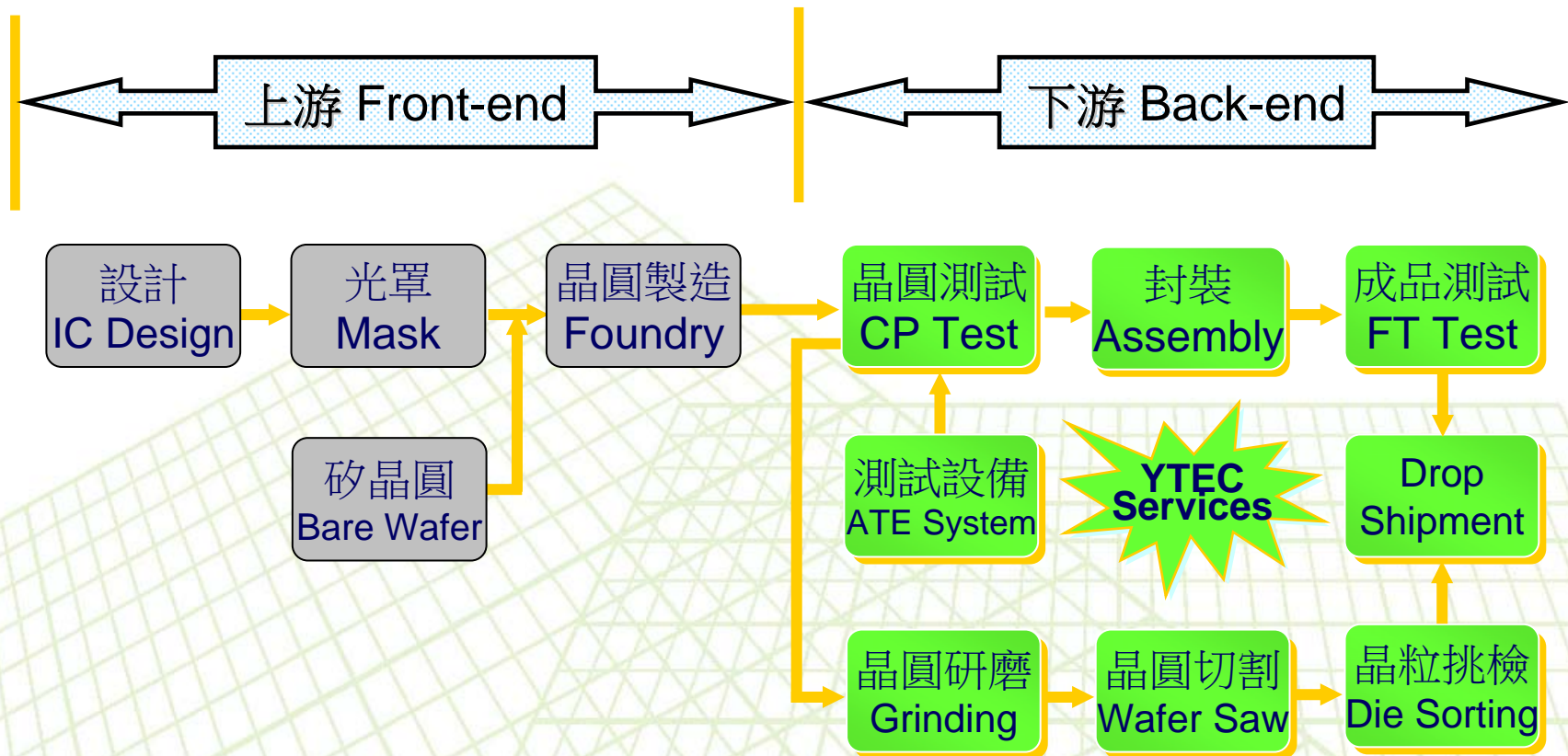
A successful person will find the way to overcome a challenge

Loser finds excuses.



# IC OEM Services

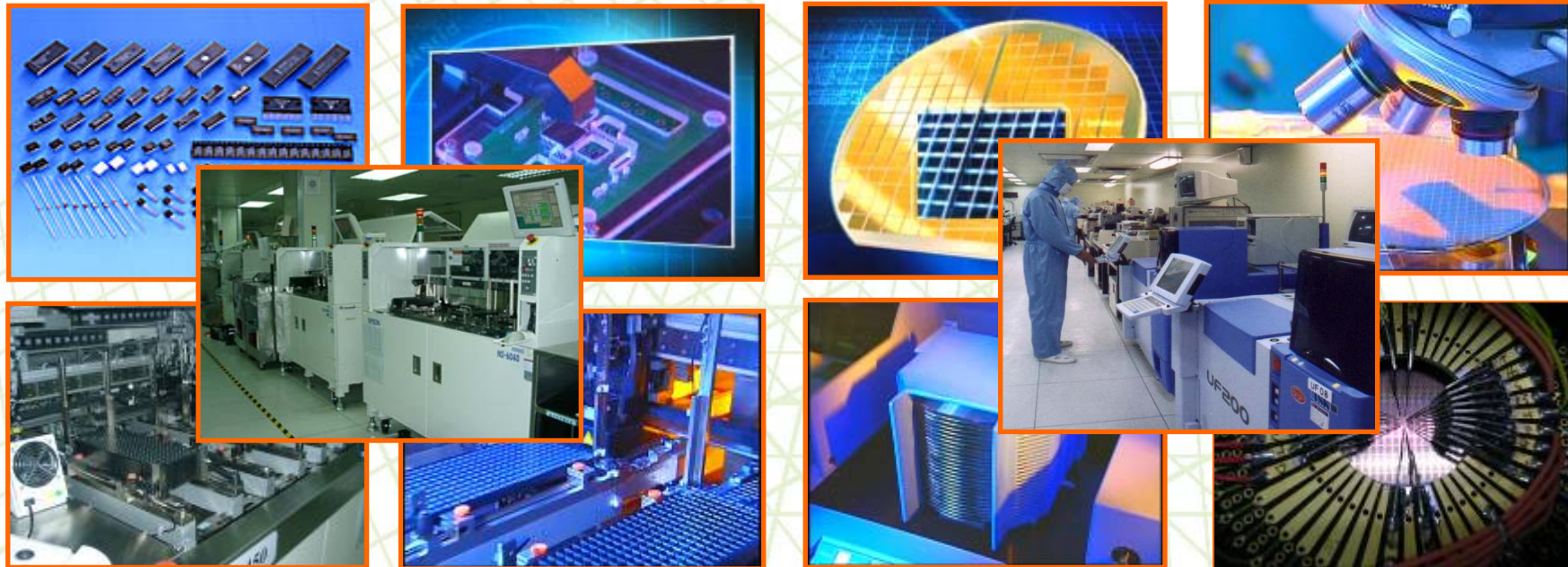
Company Profile



# 專業測試代工服務(IC Testing OEM)

Company Profile

- ❑ 4"~12" Wafer testing (**CP**)、Test program and test kit development (Probe-card design and manufacture).
- ❑ IC packaging testing (**FT**)、Package type : DIPs、T/SOPs、L/QFPs、QFN、L/BGA...
- ❑ PC peripheral product、Logic、Analog、Mixed-signal、No-volatile memory、MCU、LCD driver IC、High speed/ High pin count (Scud-1A 512C) testing.  
CIS(CMOS Image Sensor)、RF、MES、SoC product testing
- ❑ Others : Laser trimming、Lead scanning、Test program and test kit development technical support **Turn-key service** (For example: PKG assembly、Tape-reel、Drop-shipment...).



# 研磨、切割及挑檢代工服務 (Grinding, Sawing, P&P Service)

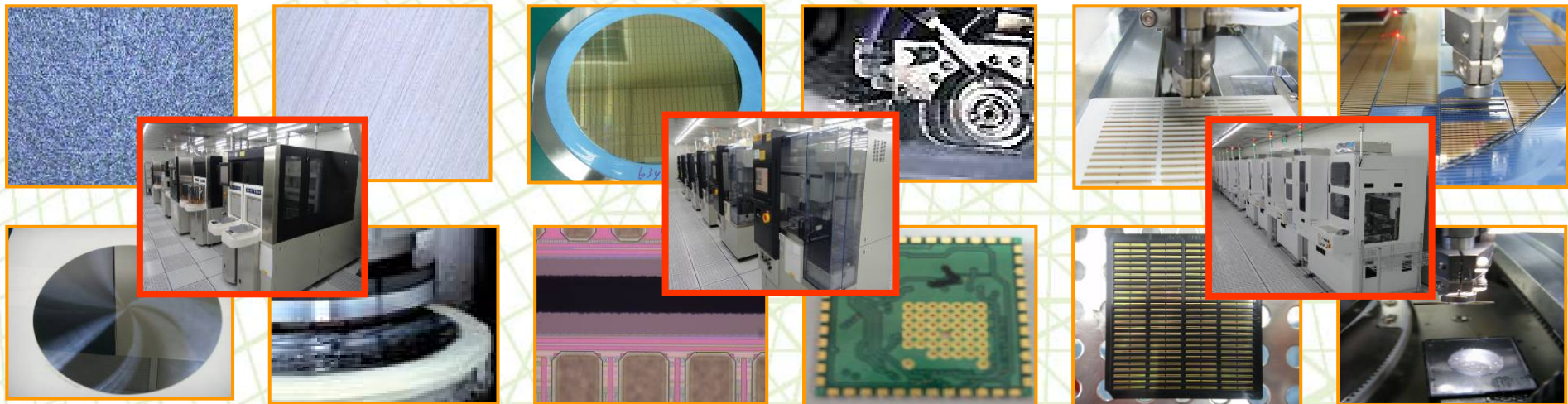
Company Profile

## ❑ IC Grinding、Sawing、Pick & Place

- 4"~12" Wafer back-side grinding、sawing、chip pick & place services for Consumer and gold bump COG products。
- Pick & Place Chip Back-side AOI inspection System inside。

## ❑ Substrate Sawing

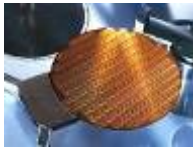
- LED package substrate、Glass substrate、Ceramic Substrate、Ceramic+FR4、Lead-frame、QFN package、HTCC、LTCC、PCB。



# LED OEM Services

Company Profile

**Front-end Epi**



**Epistar** 、 Lextar  
 、 Vpec 、 **Arima**  
 、 Tekcore 、 **Nan Ya**

**Mid-end Chip**



Epistar 、 Opto Tech  
 、 Arima 、 TynTek 、  
 Lextar 、 Liteon

**Back-end Assembly**



**Harvatek** 、 Unitpoto 、  
 KingBright 、 Bright LED 、  
 LEDTech 、 Taiwanoasis 、  
 Everlight 、 Liteon 、  
 Para Light 、 Lextar

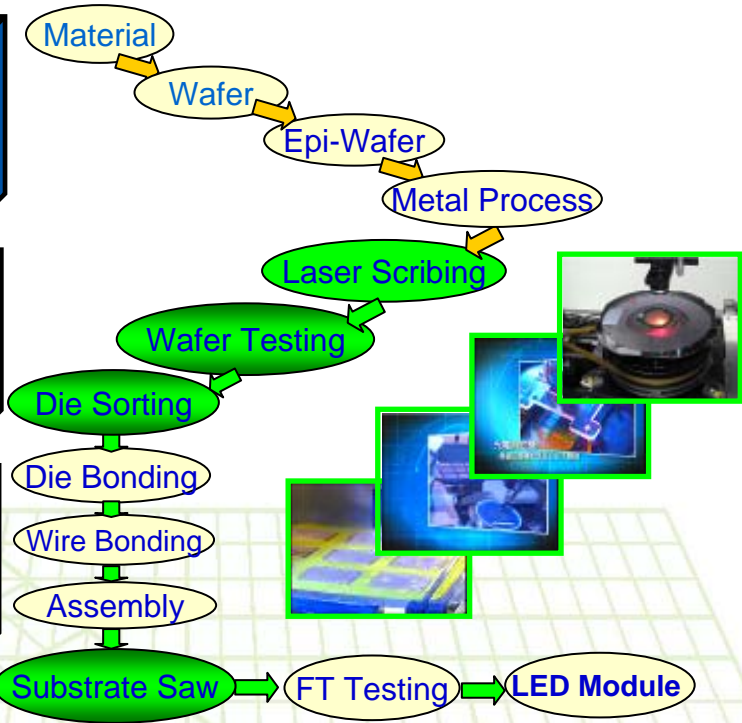
**Application**



**Front-end**

**Mid-end**

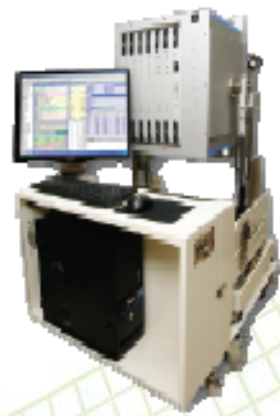
**Back-end**



- **Front-end Product** : Wafer 、 Epi-Wafer , For example GaAs 、 GaAsP 、 AlGaAs 、 AlGaInP
- **Mid-end Product** : Laser Scribing 、 Wafer Testing and Pick & Place Die-sorting
- **Back-end Product** : Lamp 、 Display 、 SMD 、 IR transmission module 、 Optical Communication product 、 Substrate Saw

# IC Testing Application Equipment

Company Profile



**YT5100**

全功能高頻SoC IC  
測試機

**Scud-1A**



**YT6100**

Fat Type  
IC測試分組機



**YT6200**

QFN測試包裝機



YoungTek Electronics Corp.

# YT5100 & Scud-1A IC Tester

Company Profile

YT5100 High Speed Soc IC Tester

Scud-1A Fully Auto IC Tester



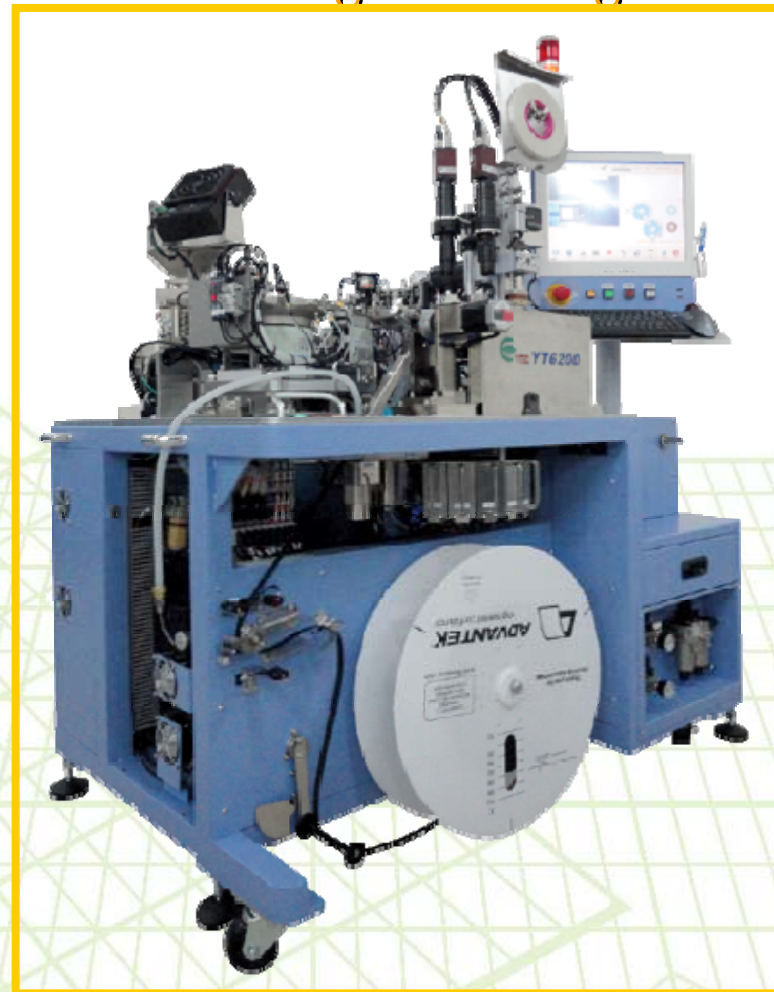
# YT6110 IC Handler / YT6200 QFN Testing & Packing

Company Profile

YT6110 IC Handler



YT6200 QFN  
Testing & Packing





# 影像感測模組測試設備 CCM (CMOS/Compact Camera Module)

Company Profile

影像感測模組測試設備

CCM YT3100



全自動影像感測模組測試設備

CCM YT3300



YoungTek Electronics Corp.

# YT1100 LED Tester(YT1100 LED 測試機)

Company Profile

□ YTSD01 → YTSD02 → YT1000 HV LED Tester(8000V ESD)  
→ YT1100 HV LED Tester (Multi-station)



# DB-260 LED Prober

Company Profile

## PB-260 LED Prober

### PB-260 LED 晶粒檢測機 LED Chip Probe Station



**自動換探針功能  
針痕監控系統  
晶粒外觀辨識功能**





■ 鏡分球收光高度6mm

■ 複合式收光系統

### PB-260

**雙池、變角、PAD、極化辨識**

**特色：**

- 自動換探針功能 **NEW**
- 針痕監控系統 **NEW**
- 探針高度感知 **NEW**
- 雙池、變角、PAD、極化辨識系統
- 鏡分球收光高度6mm
- 自動設定起始點(Auto Alignment Key Search)
- 簡易的操作畫面
- Z軸採用直立式線性馬達運動精度高結構穩定
- 可依客戶需求，同時安裝複分球與顯微鏡收光系統
- 鏡分球固定座採用三軸精密微調平台
- 探針座使用快拆式底座，探針維護便利
- 可依客戶需求搭配導電或不導電平台

**Index Time Table :**

time (msec)	晶粒間距(mm)				
	8	12	20	40	
Z軸上升高度 (mm)	6	73	79	86	100
	8	75	81	88	102
	12	85	90	97	111
	14	90	95	102	116

**規格(Specification)**

Chuck 種類	4" MAX.	1.58mm or 1.57mm
Water 特性	可旋轉角度	±.1°
X-Y 軸行程	210mm x 470mm	0層行程
X-Y 軸解精度	1 μm	0層精度
X-Y 軸精度	< 2.14 μm	0層精度
Z 軸行程	100mm	行程精度
Z 軸解精度	1 μm	精度
Z 軸精度	5.4 μm	精度
Communication Interface	TTL, RS232	
機台尺寸	Width = 1165mm, Depth = 917mm, Height = 1843mm (Incorporate and lower light)	

越路如有變更，恕不另行通知

**威控自動化機械股份有限公司**  
WECON AUTOMATION co.,ltd.

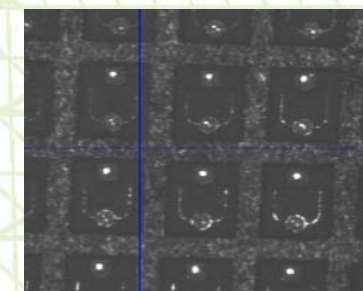
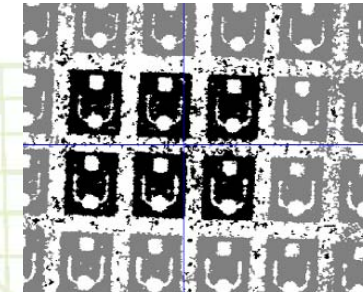
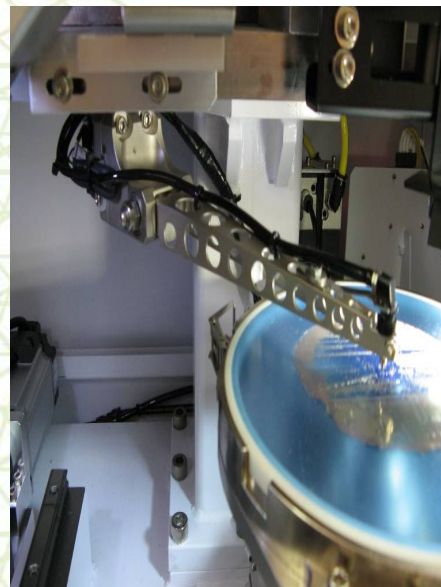
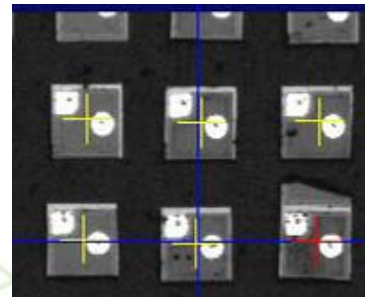
新竹市城頂路99巷127號  
No.127, Alley 99, Pudin Rd., Hsinchu City, Taiwan  
TEL:886-3-5734757 FAX:886-3-5734760

www.wecon.com.tw

# LS-360 LED Sorter

Company Profile

## LS-360 LED Sorter



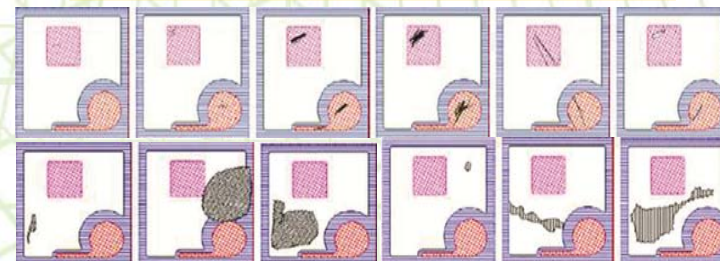
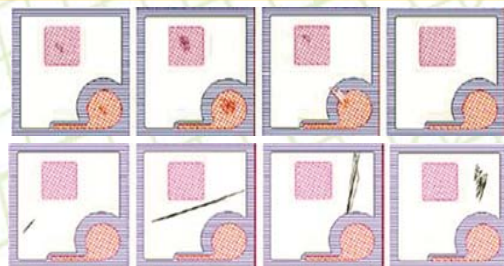
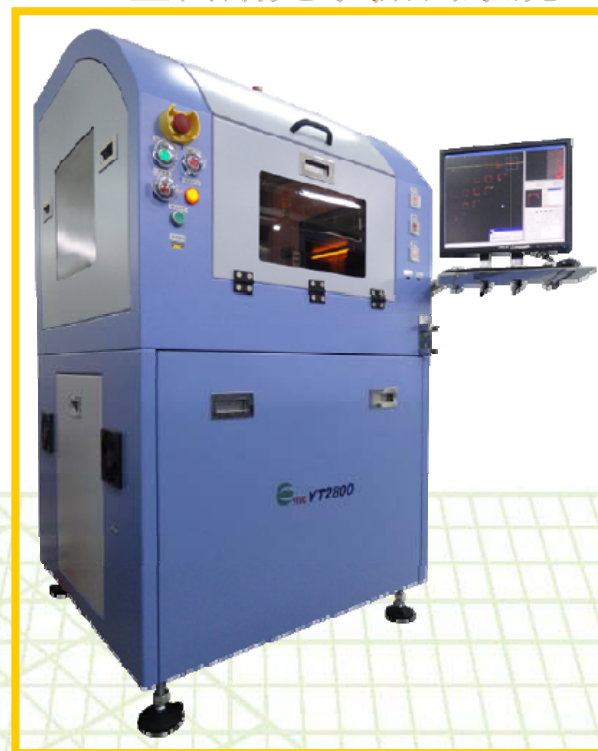
# 自動光學檢測系統 (Auto Optical Inspection)

Company Profile

**YT 5311 LED Chip/Wafer/Mask**  
半自動光學檢測系統



**YT 2800 LED Chip/Wafer/Mask**  
全自動光學檢測系統



# 自動光學檢測應用(AOI Application)

Company Profile

被動元件、LED  
產品六面外觀檢測



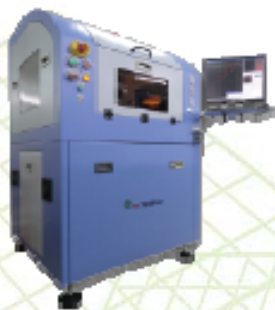
**YT2300**

元件六面外觀  
檢測機

**YT2330**

被動元件六面外觀  
檢測機

LED及被動元件散熱基板  
產品之外觀檢測



**YT2700**

LED及被動元件  
散熱基板之2D AOI  
檢測機



**YT2705**

LED及被動元件  
散熱基板之2D AOI  
檢測機  
(Auto Load/Unload)



YoungTek Electronics Corp.

# 自動光學檢測系統 (Auto Optical Inspection)

Company Profile

YT 2300(YT2330) Component AOI

自動光學檢測系統(雙軌)



## Reel type taped products:

- Resistor
- Capacitor
- Inductor
- LED
- IC
- Relay
- Connector
- Fuse



# LED Assembly Application Equipment

Company Profile





# DB-159 Die Bonder & YT2500 LED Dispenser

Company Profile

## DB-159 Die Bonder

## YT2500 LED Dispenser

DB-159 泛用型高速固晶机  
High Speed Multiple Applications Epoxy Die Bonder

UPH **15K**  
Cyc. Time 230ms

超宽工作行程: 120 x 280mm  
顶针自动测高, 防撞设计  
多种制程选择  
开放式参数设定



**WECON**  
威控自动化  
www.wecon.com.tw

DB-159

多制程选择

- ◆ 个别产程角度控制功能(图1)
- ◆ CAD程式输入档案功能(图2)
- ◆ 多晶圆功能(图3)
- ◆ 特殊点胶固晶功能(图4)
- ◆ 多型影像引导固晶功能



影像辨识系统 (图5)

- ◆ 可执行外观检查标准: 3D测、PAD污染检查、缺角、破裂、荧光剂污染检查
- ◆ 具有缺漏、掉晶检查功能
- ◆ 影像测料可空料控制
- ◆ 晶圆位置设定能以方形或圆形材料显示, 以提高设定精度 (图6)
- ◆ 晶圆旋转修正功能

规格(Specification)

固晶速度 UPH	15K (SMD 0603规格, 8.2 THRU-H)	影像辨识系统 CCD	25K Gray level
固晶精度	X: 25.4um, Y: 2.5um	Resolution	1024x768 pixel
固晶行程	Max. 523 mm/min	固晶速度	5-18 gpm
晶片尺寸范围		载晶头重量	1800g
Wafer Ring Dia	6" (152mm)	Dimension	1310mm x 1200mm x 1900mm
Working Range	±120mm (X/Y)	固晶速度	
Die size	01mm - 80mm (10x10mm) 最大高度8mm	Power Req.	AC220V / 4A(Normal), 120V(16A) / 2200W
工作行程 Length	110" (2800mm)	Pneumatic source	5 kg/cm <sup>2</sup>
Height	4.7" (120mm)		0.5kg/cm <sup>2</sup> (Sub-H Vac. Pump)
产品重量 Weight	4000kg		
固晶机尺寸	Auto CCD x 11" LCD x X/Y/Z axis Stage		

威控自动化, 您的最佳选择

威控自动化机械股份有限公司  
WECON AUTOMATION CORP.

台湾新竹市城东路112号  
No.112, Alley 95, Fubin Rd, Hsinchu City, Taiwan  
TEL:886-3-2734757 FAX:886-3-2734760

www.wecon.com.tw



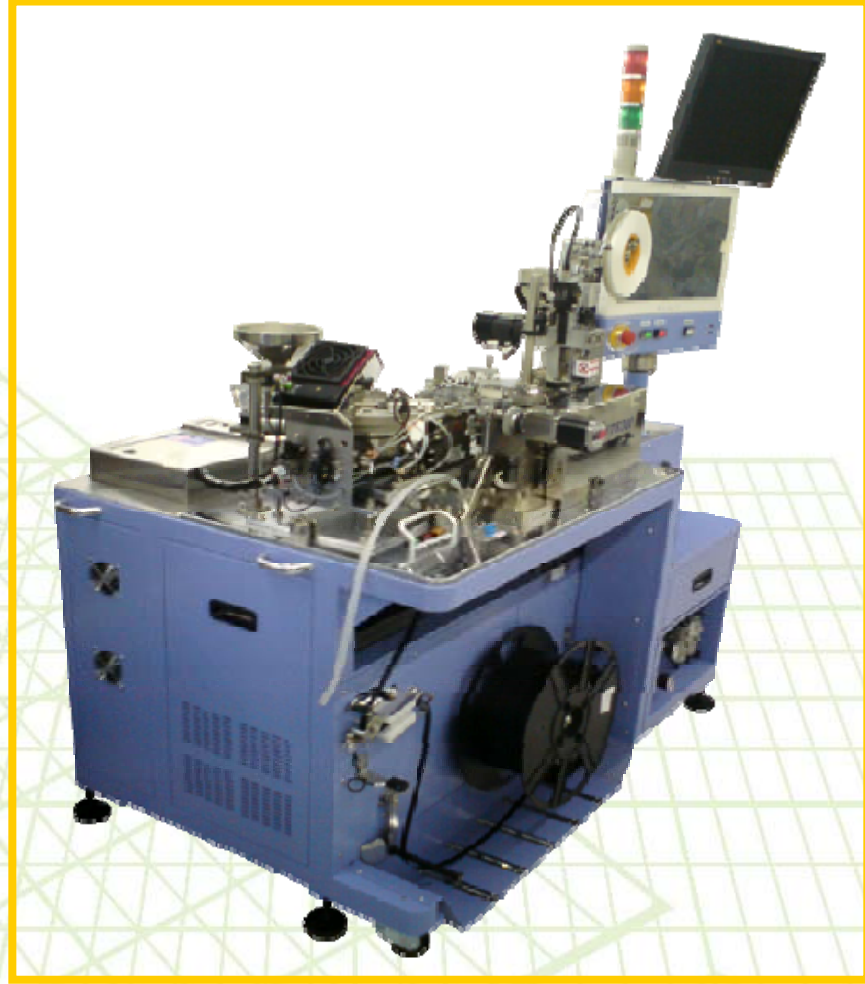
# YT6400 LED Handler & YT6300 LED Tapping

Company Profile

YT6400 LED Handler



YT6300 LED Tapping



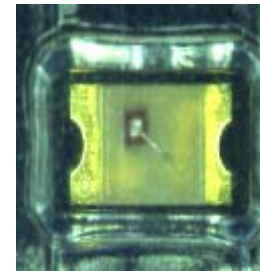
YoungTek Electronics Corp.

# 自動光學檢測系統 (Auto Optical Inspection)

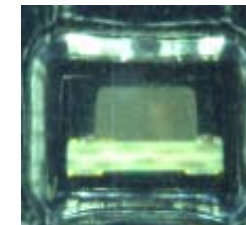
Company Profile

## YT 2210 Reel Type Components

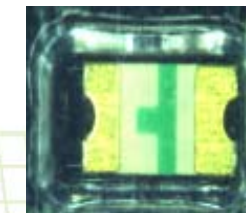
自動光學檢測系統



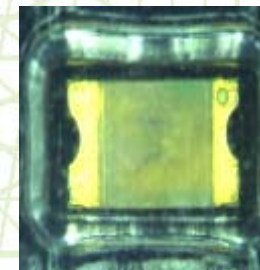
Polarity inverse package



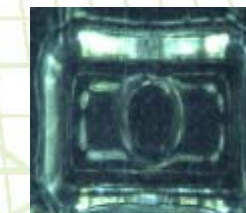
Tilt



Over turn



Mixed package



Empty

# Revenue Growth

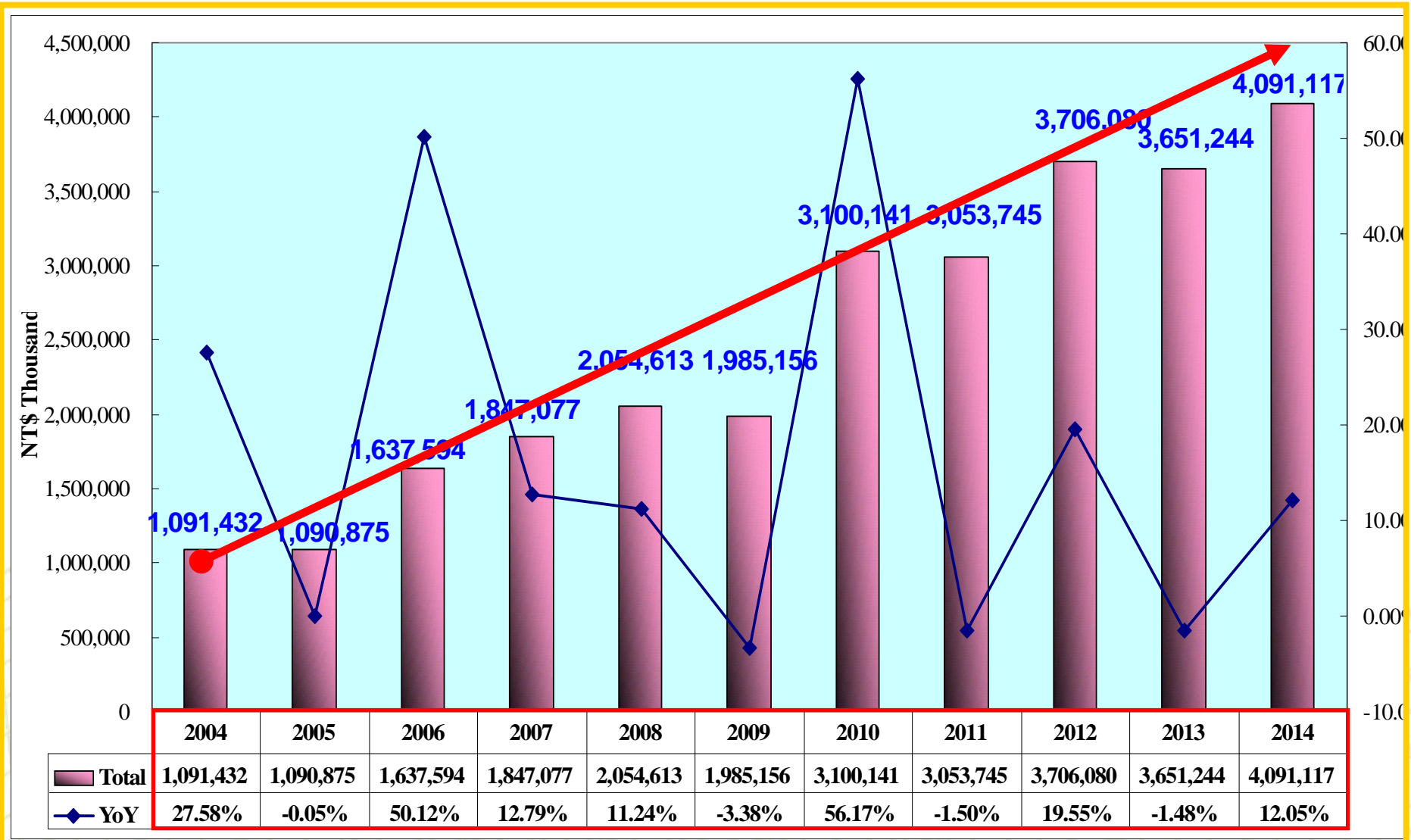
# 2014&2015 Combine Monthly Revenue

Company Profile  
NT\$(Thousand)

Business Item/Month	Jan.	Feb	Mar	Apr	May	Jun.	Jul.	Aug.	Sep	Oct.(e)	Nov.	Dec.	Total	Share(%)	
切割挑檢代工 Sawing & Sorting OEM	2014	100,553	100,934	122,235	121,114	143,088	144,661	152,796	148,797	148,784	143,055	123,642	108,900	587,924	37.34%
	2015	135,220	124,414	160,651	133,383	152,954								706,622	44.63%
	YoY	34.48%	23.26%	31.43%	10.13%	6.90%								20.19%	
	MoM	24.17%	-7.99%	29.13%	-16.97%	14.67%									
測試代工 Testing OEM	2014	130,380	125,550	169,353	165,193	169,592	180,817	191,855	196,815	187,063	176,062	159,529	159,462	760,068	48.27%
	2015	154,636	111,293	149,696	132,423	148,375								696,423	43.98%
	YoY	18.60%	-11.36%	-11.61%	-19.84%	-12.51%								-8.37%	
	MoM	-3.03%	-28.03%	34.51%	-11.54%	12.05%									
機器組裝等產品銷售 Own Product Sales	2014	5,629	37,431	67,395	43,886	72,346	53,993	40,504	43,099	35,554	32,164	25,572	63,314	226,687	14.40%
	2015	36,339	26,433	62,471	19,090	36,009								180,342	11.39%
	YoY	545.57%	-29.38%	-7.31%	-56.50%	-50.23%								-20.44%	
	MoM	-42.61%	-27.26%	136.34%	-69.44%	88.63%									
營業收入淨額 (Unit: K) Sales Revenue (Net)	2014	236,562	263,915	358,983	330,193	385,026	379,471	385,155	388,711	371,401	351,281	308,743	331,676	1,574,679	100.0%
	2015	326,195	262,140	372,818	284,896	337,338								1,583,387	100.0%
	YoY	37.89%	-0.67%	3.85%	-13.72%	-12.39%								0.55%	
	MoM	-1.65%	-19.64%	42.22%	-23.58%	18.41%									
營業收入淨額(系 計) Sales Revenue (Total)	2014	236,562	500,477	859,460	1,189,653	1,574,679	1,954,150	2,339,305	2,491,454	3,099,417	3,450,698	3,759,441	4,091,117	--	--
	2015	326,195	588,335	961,153	1,246,049	1,583,387									
	YoY	37.89%	17.55%	11.83%	4.74%	0.55%									
總計代工成長 OEM Growth (Total)	2014	230,933	226,484	291,588	286,307	312,680	325,478	344,651	345,612	335,847	319,117	283,171	268,362	1,347,992	--
	2015	289,856	235,707	310,347	265,806	301,329								1,403,045	
	YoY	25.52%	4.07%	6.43%	-7.16%	-3.63%								4.08%	
	MoM	8.01%	-18.68%	31.67%	-14.35%	13.36%									

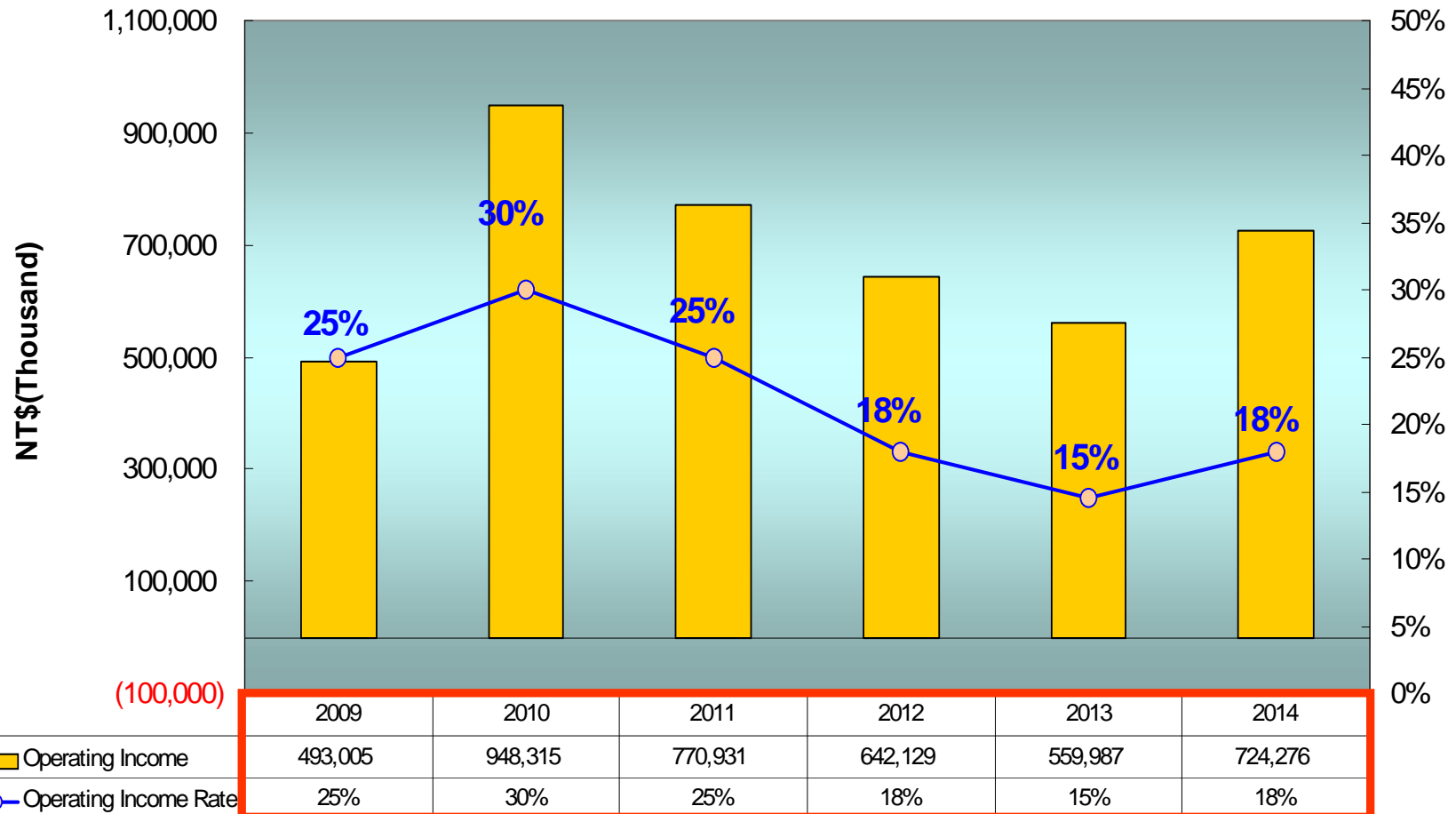
# 2004~2014 Combine Revenue Growth

Company Profile



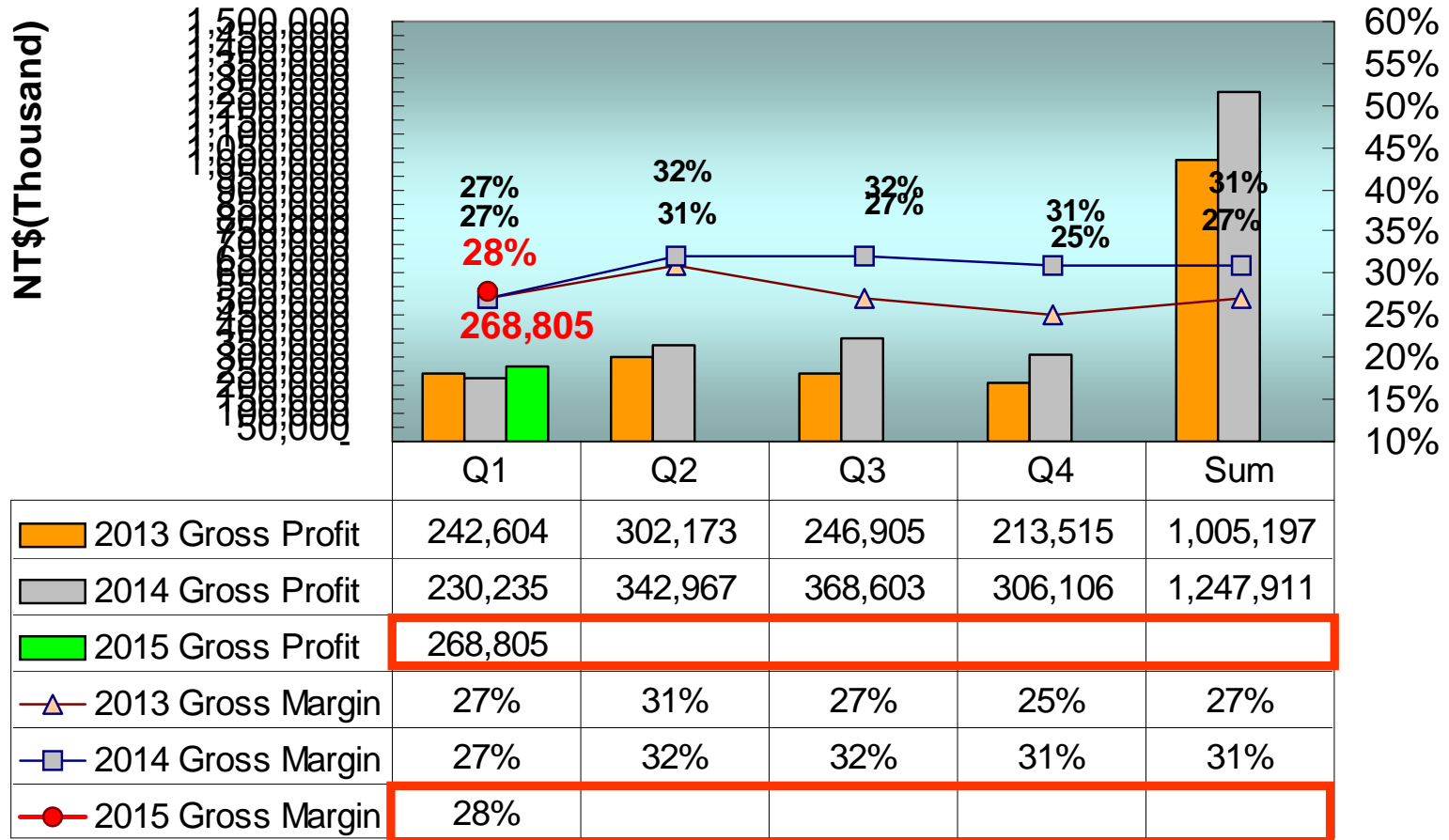
# 2009~2014 Combine Operating Income

Company Profile



# 2013~2015 Combine Gross Profit

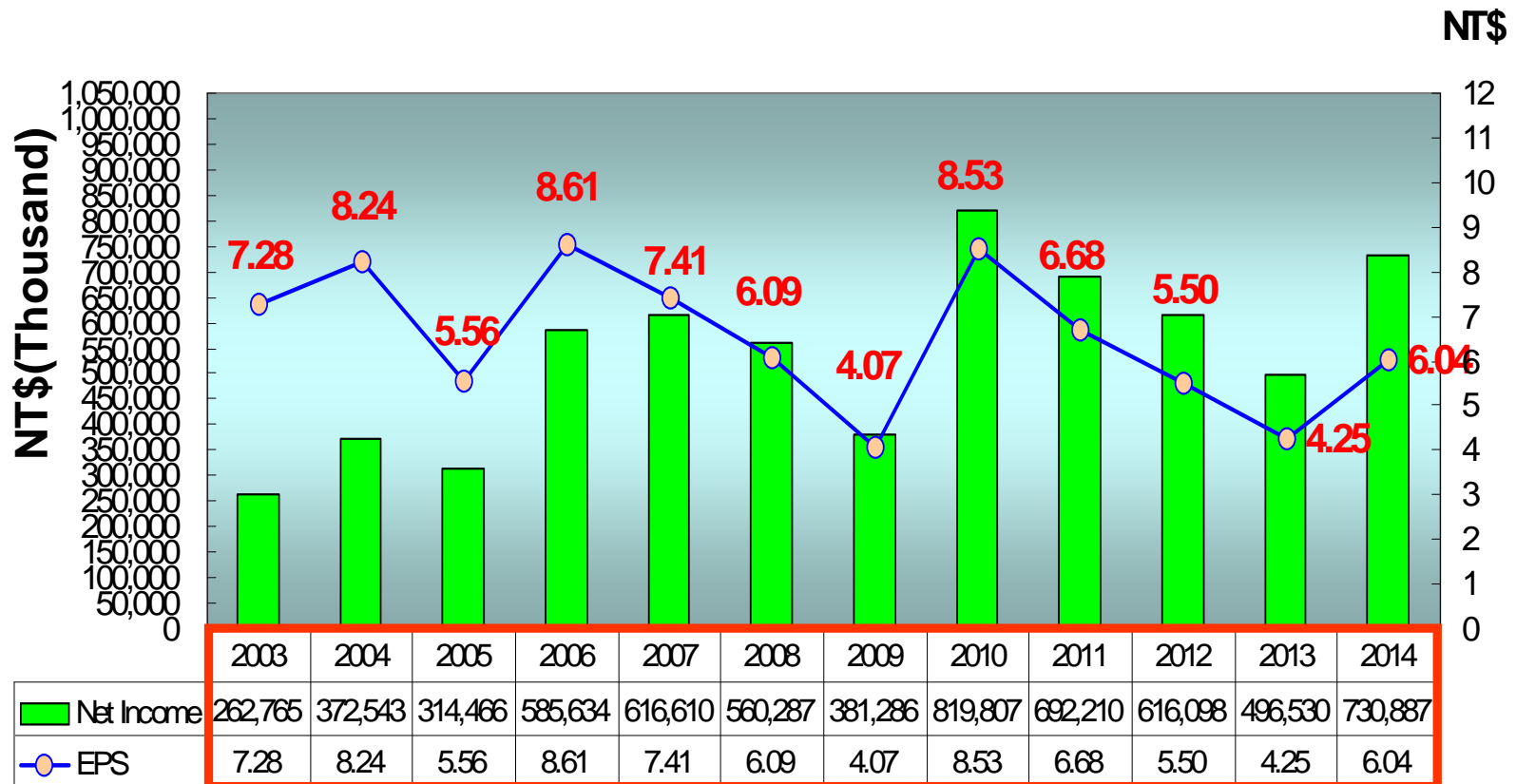
Company Profile





# Yearly Net Income & EPS

Company Profile



# Business Expansion Status(相關產業之狀況)

## Company Profile

- **半導體及光電切挑代工服務**：2015年Q1 YOY成長**26.4%**、**QOQ**成長**9%**創Q1之新高、5月 YOY成長**6.9%**、**MOM**成長**14.7%**符合預期、因此將持續追蹤、另 **LED**在新的應用提昇下樂觀預期在**LED**挑檢已擴充之產能 應可適時提供市場成長之需求、相信可挹助公司之營收成長。
- **IC測試系統及QFN測試包裝機、分類機開發**：成功的開發完成**100MHZ 512/768 pins**全功能**IC**測試機、針對多媒體、**Digital TV**及高速邏輯**SOC**產品並行測試、並導入量產、更高階機種亦將陸續上市、另研發出**QFN**測試包裝機及分類機、可應用於**IC**成品測試生產、更具備三合一功能(測試、外觀檢測及包裝)、以提昇**IC**測試代工服務之競爭優勢。
- **CIS、CCM、LED後段生產設備及AOI設備開發**：成功開發完成**CIS(CMOS影像感測系統)**、具備高速影像處理及完整電性測試之解決方案、並導入代工服務、挹助營收。自行開發之**CCM**(影像感測模組測試設備)、**LED**後段生產設備及**AOI**(自動光學檢測系統)等設備、因應市場需求將擴展銷售、**AOI**設備研發係以解決半導體及光電等產業在目檢之視覺盲點並可大幅節省人力、並已將光電技術結合影像分析等與自動化設備設計、成功研發出各類型外觀檢測機。**2015年Q1YOY**成長**13.4%**、**QOQ**成長**3.5%**符合預期、**5月**營收**MOM**成長**88.6%**符合預期、因此將持續追蹤、相信在持續開發新產品及功能提昇下、展望未來應可持續挹助業績成長之動力。
- **半導體代工服務**：2015年Q1 YOY成長**0.3%**符合預期、5月營收**MOM**成長**12%**符合預期、因此將持續追蹤、而**YTEC**在持續開發新產品與互補及平衡的產品線發酵下(如**LCD,RF..etc**)、展望未來應可持續挹助業績成長之動力。



# Share payout composition and history

Company Profile

項目	96年度 (2007)	97年度 (2008)	98年度 (2009)	99年度 (2010)	100年度 (2011)	101年度 (2012)	102年度 (2013)	103年度 (2014)	104年度 (2015)
	西95年度 Profit(2006)	西96年度 Profit(2007)	西97年度 Profit(2008)	西98年度 Profit(2009)	西99年度 Profit(2010)	西100年度 Profit(2011)	西101年度 Profit(2012)	西102年度 Profit(2013)	西103年度 Profit(2014)
現金股利	\$4.00	\$4.00	\$3.00	\$3.00	\$5.238	\$5.238	\$4.659	\$3.668	\$5.000
無償 盈餘 配股	\$1.00	\$0.50	\$0.10	\$0.10			\$0.098	\$0.099	\$0.100
配股 資本公 積配股	-	-	-	-	\$0.093	\$0.095	-	-	-
EPS	\$8.61	\$7.41	\$6.09	\$4.07	\$8.53	\$6.68	\$5.50	\$4.25	\$6.04

# 公司願景 **Company Mission**

*Company Profile*

著眼於國內外市場的開拓，讓久元成為立足台灣的整合性後段IC及LED代工服務廠，並朝放眼世界的自有產品、自有品牌邁進。

Based on the domestic and international marketing development, YTEC has gotten a foothold as an integrated back-end IC&LED OEM factory. YTEC moves forward, with it's own products, and Own Bench Marks.



Q & A

*Company Profile*

Thank you very much



**YTEC** YoungTek Electronics Corp.