

# Welcome



*Welcome*



## Brief Introduction

November 17th, 2015



# 2015 VISIT SCHEDULE @久元

*Company Profile*

## Contents

## Time

- |   |             |
|---|-------------|
| <input type="checkbox"/> Brief Introduction of YTEC | 14:00~14:20 |
| <input type="checkbox"/> Q & A                      | 14:20~15:30 |
| <input type="checkbox"/> Line Tour (Free)           | 15:30~16:00 |

# Contents

*Company Profile*

- Brief Introduction**
- Factory Overview**
- Company Milestone**
- Company Management Concept**
- OEM Services**
- R&D Roadmap and Own Product Development**
- Revenue Growth**
- Company Mission**

# Brief Introduction

*Company Profile*

**Found Time** : 1991/July

**Chairman** : Bily Wang

**President of Service Group** : Jeff Chang

**President of Own Product Group** : Glen Chen

**Employee** : 1185 persons

**Capital** : NTD 1285million (USD 39.2 million)

**Factories** : **Plant 1** : Special & substrate sawing

**SBIP Plant** : IC Back-end turn-key service, ATE&AOI

**Chuangsing Plant** : IC Final Testing service

**Li Hsin Plant** : LED Back-end turn-key service

**An Ping Plant** : LED Testing & sorting

**Xiamen Plant** : LED Testing & sorting

**Changzhou Plant** : LED Testing & sorting

**Wujiang MightYtek Plant** : IC Assembly & Testing

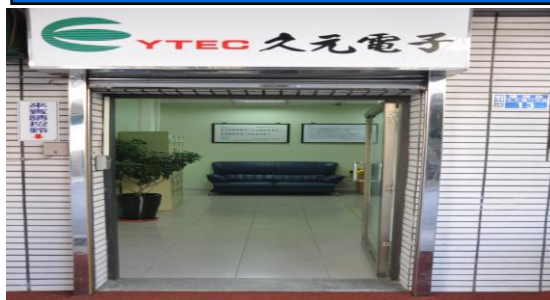
## **Business Items** :

- 1. Semiconductor and LED OEM:** IC testing, wafer sawing, grinding, chip sorting and LED testing, laser scribing, sorting and substrate sawing.
- 2. Design, manufacture and sales of semiconductor equipments:** Full-function IC tester, logic ,analog, Mixed-Signal IC Tester , LED tester, prober and sorter, CCM equipments, AOI system.

# Factory Overview

Company Profile

Plant #1



SBIP Plant



Li-Hsin Plant



Chuangsin Plant



An-Ping Plant



Hsinchu

Tainan

# Factory Overview

Company Profile

Changzhou YT Plant



WuJiang MightYtek Plant



Xiamen YT Plant



# Company Milestone

Company Profile

- 1991/Jul.** YTEC was founded and the capital is NTD \$ 5 million.
- 1998/Oct.** Develop logic tester (Goblin) with 5 MHz/40 pins.
- 2000/Mar.** Achieved the certification of ISO 9001
- 2000/Jul.** Full-function IC tester was verified by Industry Agency with predominant product development project.
- 2002/Nov.** SEC (Securities and Exchange Commission) approve YTEC to public stock.
- 2003/Nov.** LED OEM service was established.
- 2004/Mar.** Got the approval to establish the branch in Hsin chu SBIP.
- 2004/Mar.29** Listed in Taiwan stock exchange. (Stock No.: 6261)
- 2006/Mar.** Signs the cooperation agreement of the IC test system technology. with Agilent Technologies
- 2006/Dec.** Achieved the certification of ISO 14001 and OHSAS 18001.
- 2007/Jul.** Develop Tainan An Ping plant for LED sorting.
- 2008/May** Develop Li Hsin plant for LED test & sorting.
- 2008/Oct.** Achieved the certification of ISO/TS 16949.
- 2009/May.** To establish the Xiamen Young Tek Electronics Co., Ltd. to provide the LED Backend Turn-key service.
- 2009/Jun.** Solar silicon substrate inspection system was verified Science Park Administration with development project.
- 2010/Mar.** Develop SBIP plant for wafer grinding & sawing.
- 2010/Sep.** To establish the Changzhou YoungTek Electronics Co., Ltd. to provide the LED Backend Turn-key service.
- 2011/Jan.** Achieved the certification of IECQ QC080000.
- 2011/Dec.** To establish the WuJiang MightYtek Semiconductor Co., Ltd. to provide the Semiconductor Backend Testing & Ass'y Turn-key service.
- 2012/Feb.** To establish the Shenzhen Clear Rich Tech. Co., Ltd. to provide the Semiconductor Backend Testing service.
- 2012/May.** Signs the cooperation memorandum, the expansion related marketing functions Development with Yoshikawa Semiconductor Co., Ltd.
- 2013.Dec.** Got the 14th Industrial Excellence Award by Ministry of Economic Industry Agency .
- 2015.May.** Development of innovative measuring technique and system for critical dimension inspection on through silicon vias was verified Science Park Administration with development project.
- 2015.Jun.** Develop Chuangsin plant for IC final testing.
- 2015 Aug.** Got the Corporate Social Responsibility Award by CommonWealth Magazine.



# Company Management Concept

Company Profile

## 經營理念：(Management Concept)

主人翁經營理念；下工程即是客戶。

Treat YTEC as your own company. (Host concept)

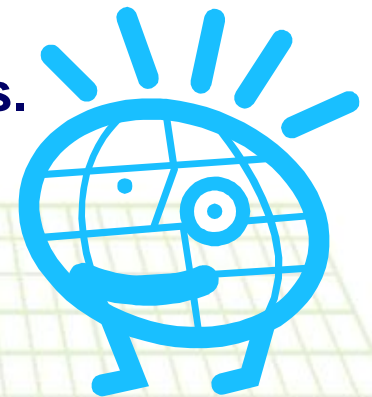
Treat all post projects and processes as our customers.

## 工作態度：(Working Attitude)

成功者找方法；失敗者找藉口。

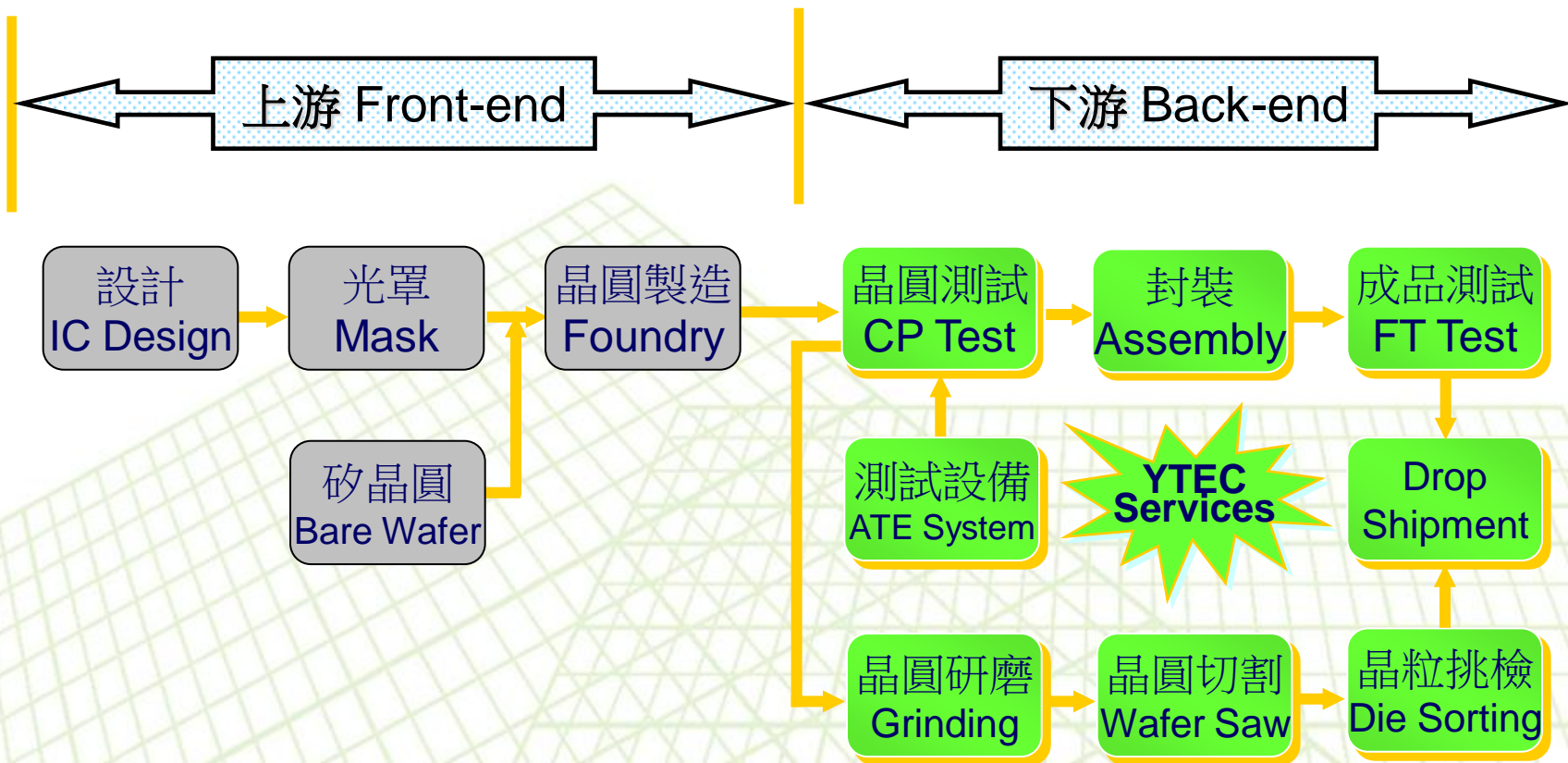
A successful person will find the way to overcome a challenge

Loser finds excuses.



# IC OEM Services

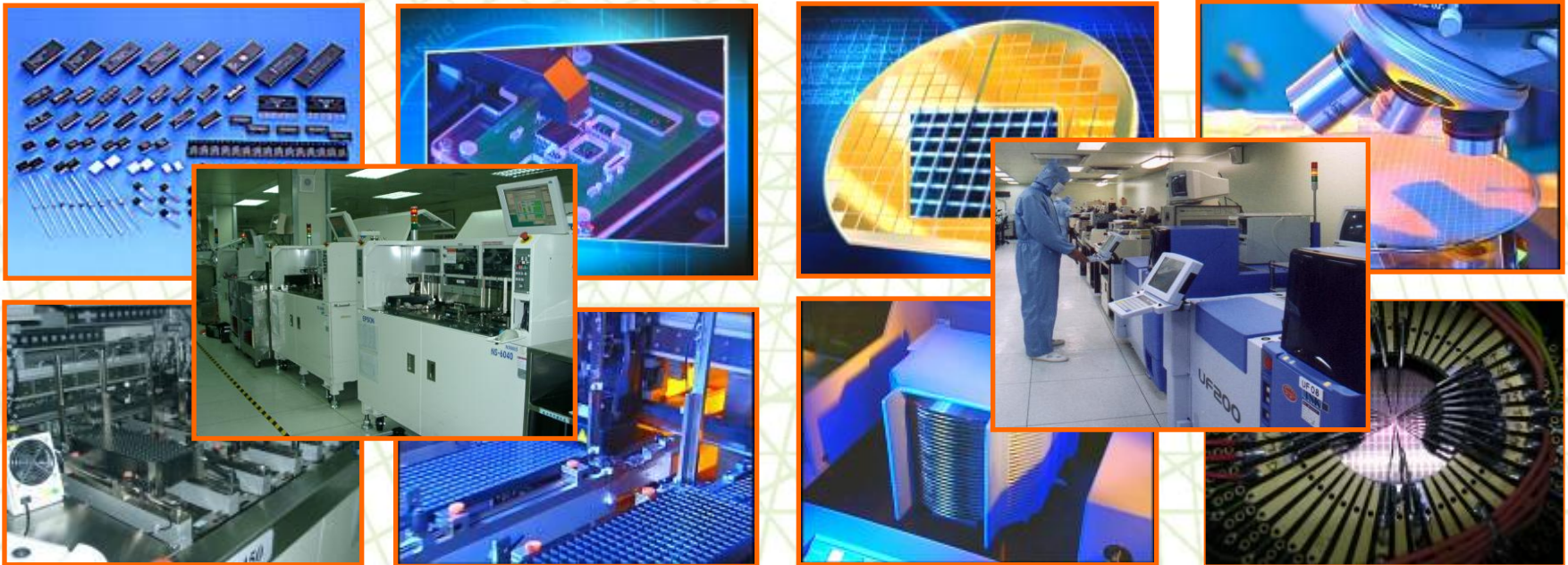
Company Profile



# 專業測試代工服務(IC Testing OEM)

*Company Profile*

- ❑ **4"~12" Wafer testing (CP)**、**Test program and test kit development** (Probe-card design and manufacture).
- ❑ **IC packaging testing (FT)**、Package type : DIPs、T/SOPs、L/QFPs、QFN、L/BGA...
- ❑ **PC peripheral product、Logic、Analog、Mixed-signal**、No-volatile memory、MCU、**LCD driver IC**、High speed/ High pin count (Scud-1A 512C) testing.  
**CIS**(CMOS Image Sensor)、RF、MES、SoC product testing
- ❑ Others : Laser trimming、Lead scanning、Test program and test kit development technical support **Turn-key service** (For example: PKG assembly、Tape-reel、Drop-shipment...).



# 研磨、切割及挑檢代工服務 (Grinding, Sawing, P&P Service)

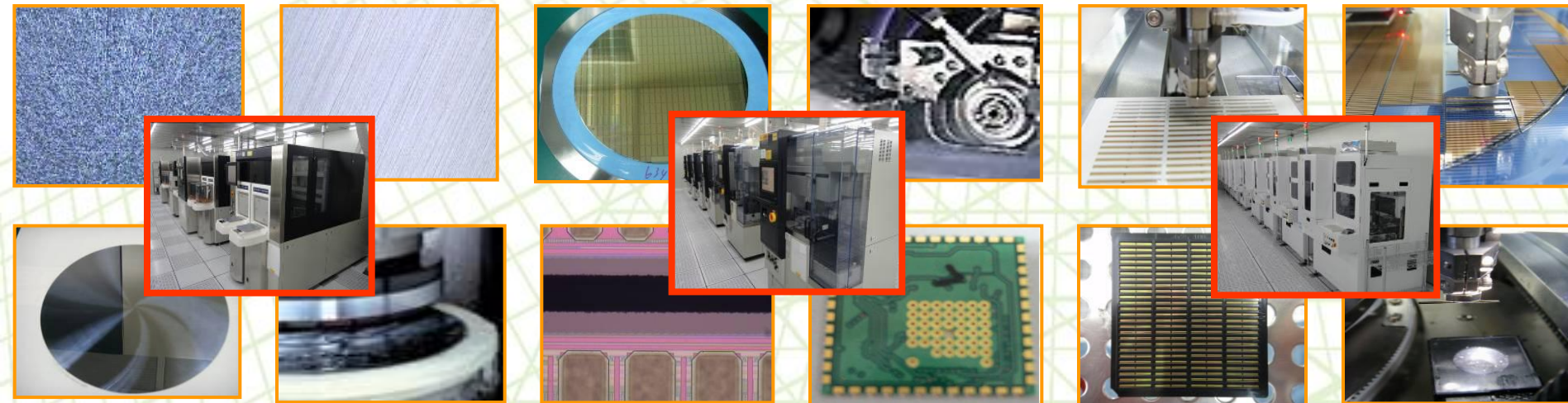
Company Profile

## ❑ IC Grinding、Sawing、Pick & Place

- 4"~12" Wafer back-side grinding、sawing、chip pick & place services for Consumer and gold bump COG products。
- Pick & Place Chip Back-side AOI inspection System inside。

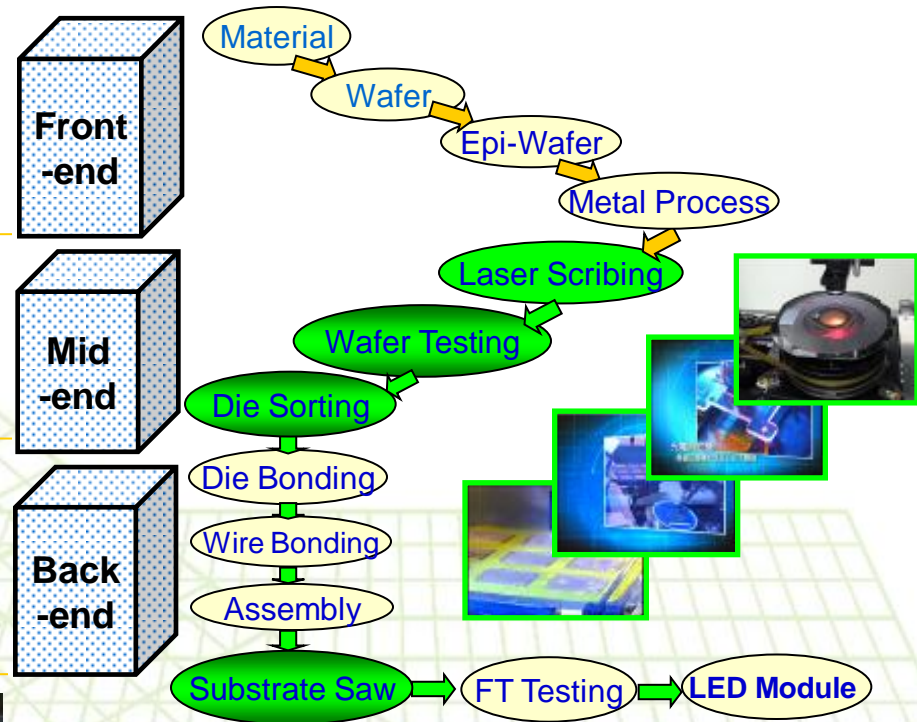
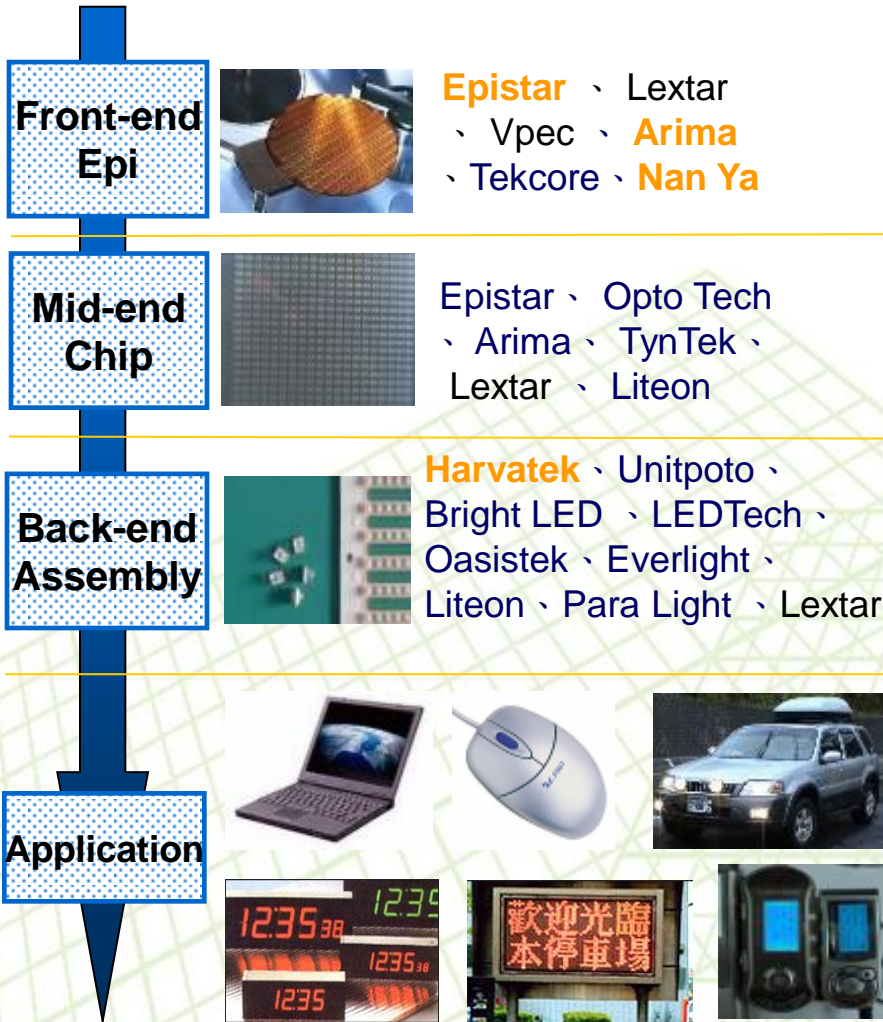
## ❑ Substrate Sawing

- LED package substrate、Glass substrate、Ceramic Substrate、Ceramic+FR4、Lead-frame、QFN package、HTCC、LTCC、PCB。



# LED OEM Services

Company Profile



- **Front-end Product** : Wafer 、 Epi-Wafer , For example GaAs 、 GaAsP 、 AlGaAs 、 AlGaInP
- **Mid-end Product** : Laser Scribing 、 Wafer Testing and Pick & Place Die-sorting
- **Back-end Product** : Lamp 、 Display 、 SMD 、 IR transmission module 、 Optical Communication product 、 Substrate Saw

# IC Testing Application Equipment

Company Profile



**YT5100**

全功能高速SoC IC  
測試機



**YT6100**

Flat Type  
IC測試分類機



**YT6200**

QFN測試包裝機

**Scud-1A**

全功能高速測試機



**IS-610**

全自動晶粒分類機



**SB-800**

全自動IC固晶機



# IS-610 & SB-800 IC Auto Sorter & Die Bonder

Company Profile

IS-610 IC Auto Sorter



SB-800 IC Die Bonder



# YT5100 & Scud-1A IC Tester

Company Profile

## YT5100 High Speed Soc IC Tester

## Scud-1A Fully Auto IC Tester





# YT6110 IC Handler / YT6200 QFN Testing & Packing

*Company Profile*

*YT6110 IC Handler*



*YT6200 QFN  
Testing & Packing*



# 影像感測模組測試設備CCM(CMOS/Compact Camera Module)

Company Profile

影像感測模組測試設備  
CCM YT3100



全自動影像感測模組測試設備  
CCM YT3300



# YT1100 LED Tester(YT1100 LED 測試機)

*Company Profile*

□ YTSD01 → YTSD02 → YT1000 HV LED Tester(8000V ESD)  
→ YT1100 HV LED Tester (Multi-station)



# DB-260 LED Prober

Company Profile

## PB-260 LED Prober

### PB-260 LED 晶粒檢測機 LED Chip Probe Station



自動換探針功能  
針痕監控系統  
晶粒外觀辨識功能



■ 積分型收光高度5mm



■ 整合式收光系統

**WECON**  
威控自動化  
www.wecon.com.tw

### PB-260

特色：

- 自動換探針功能 (NEW)
- 針痕監控系統 (NEW)
- 探針高度感知 (NEW)
- 雙燈、破片、PAD、粗化辨識系統
- 積分球收光高度5mm
- 自動設定起始點(Auto Alignment key Search)
- 簡易的操作畫面
- Z軸採用直結式螺桿長運傳動耐用且結構穩定
- 可依客戶需求，同時安裝積分球與顯微鏡收光系統
- 積分球固定座採用三軸精密微調平台
- 探針座使用快拆式底座，探針維護便利
- 可依客戶需求搭配導電或不導電平台

雙燈、驗角、PAD、粗化辨識



■ 綠色表示辨識為不良品 ■ 灰色表示辨識為正常品

Index Time Table:

Z軸上升高度 (mm)	time (msec)	晶粒間距(mm)			
		8	12	20	40
6	73	79	86	100	
8	75	81	88	102	
12	85	90	97	111	
14	90	95	102	116	

#### 規格(Specification)

Chuck 容積	150mm or 100mm	
Water 流量	4" MAX.	◎ 旋轉精度
X-Y 軸行程	210mm x 470mm	◎ 傾角精度
X-Y 軸靜精度	± 3µm	◎ 軸端
X-Y 軸精度	± 2.5 µm (Max. with CCD)	◎ 垂直精度
Z軸行程	100mm	重量
Z軸靜精度	1 µm	正面重量
Z軸精度	± 4 µm	電壓
Communication Interface	TTL, RS232	
機台尺寸	Width = 1165mm, Depth = 972mm, Height = 1784mm (Incrase and tower 1500)	

規格如有變更，恕不另行通知

威控自動化機械股份有限公司  
WECON AUTOMATION corp.

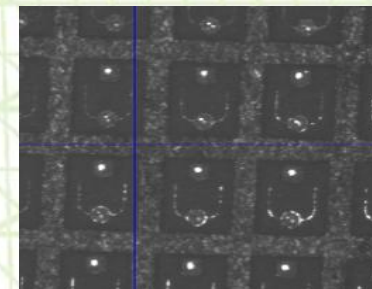
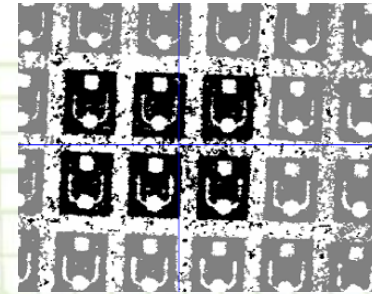
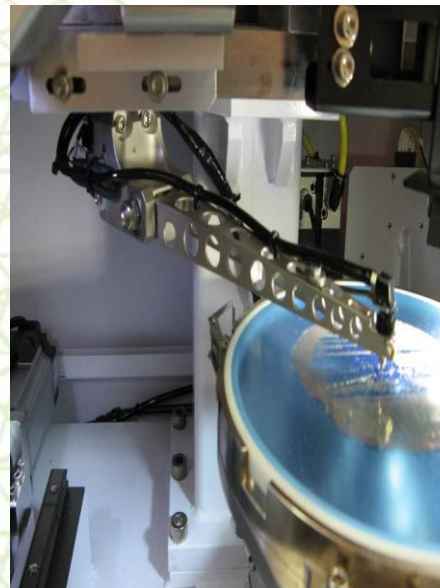
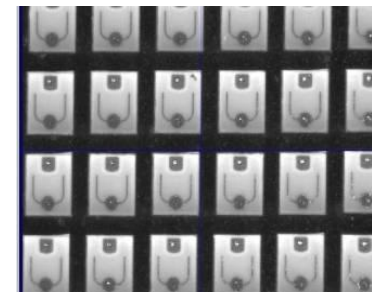
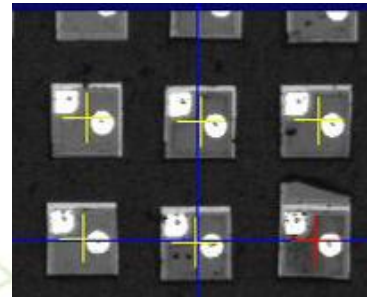
新竹市埔頂路99巷127號  
No.127, Alley 99, Pudin Rd., Hsinchu City, Taiwan.  
TEL:886-3-5734757 FAX:886-3-5734760

www.wecon.com.tw

# LS-360 LED Sorter

Company Profile

## LS-360 LED Sorter



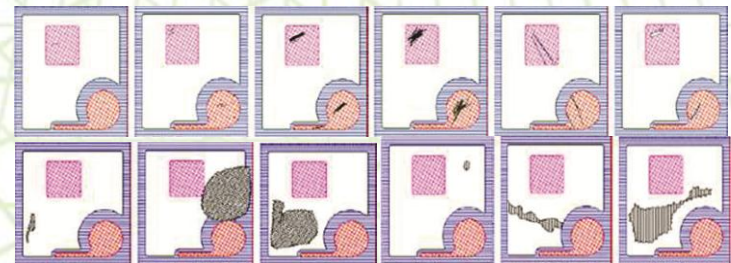
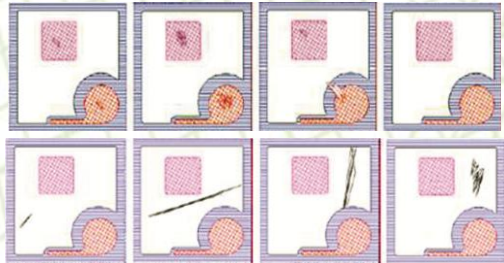
# 自動光學檢測系統(Auto Optical Inspection)

Company Profile

**YT 5311 LED Chip/Wafer/Mask**  
半自動光學檢測系統



**YT 2800 LED Chip/Wafer/Mask**  
全自動光學檢測系統



# 自動光學檢測應用(AOI Application)

Company Profile

被動元件、LED  
產品六面外觀檢測



**YT2300**

元件六面外觀  
檢測機

**YT2330**

雙軌元件六面外觀  
檢測機

LED及被動元件散熱基板  
產品之外觀檢測



**YT2700**

LED及被動元件  
散熱基板之2D AOI  
檢測機



**YT2705**

LED及被動元件  
散熱基板之2D AOI  
檢測機  
(Auto Load/Unload)

# 自動光學檢測系統(Auto Optical Inspection)

Company Profile

YT 2300(YT2330) Component AOI

自動光學檢測系統(雙軌)



## Reel type taped products:

- Resistor
- Capacitor
- Inductor
- LED
- IC
- Relay
- Connector
- Fuse





# LED Assembly Application Equipment

Company Profile



# DB-159 Die Bonder & YT2500 LED Dispenser

Company Profile

## DB-159 Die Bonder

DB-159 泛用型高速固晶机  
High Speed Multiple Applications Epoxy Die Bonder

UPH **15K**  
Cyc. Time 230ms



超宽工作行程: 120 x 280mm  
顶针自动测高、防撞设计  
多种制程选择  
开放式参数设定



www.wecon.com.tw

DB-159

多制程选择

- ▶ 个别产品高度判断功能(图1)
- ▶ CAD程式输入档案功能(图2)
- ▶ 多晶圆功能(图3)
- ▶ 视讯点检晶圆功能(图4)
- ▶ 多图像教导晶圆功能



(图1)



(图2)



(图3)



(图4)

影像辨识系统 (图5)

- ▶ 可自行外观检查标准: 发晶、PAD污染检查、异物、破裂、发晶区污染检查
- ▶ 具有缺晶、掉晶检查功能
- ▶ 视讯化制程可正确判别
- ▶ 晶圆位置设定能以方形或圆形标底显示, 以提高设定精度 (图6)
- ▶ 晶圆缺陷检测功能



(图5)



(图6)

规格(Specification)

型号名称	15K (SMD-2003标准、全上TR制程)	影像辨识系统 LCD	256 Gray level
UPHs	15K (SMD-2003标准、全上TR制程)	Resolution	320x768 pixels
Spiking accuracy	X/Y: ±1.5μm Z: ±2μm	测厚精度	±1μm
Spiking speed	Max. 523 wafers/hr	载台Z轴行程	180mm
晶片承载单位		Dimensions	1310mm x 2020mm x 1800mm
Wafer Ring Size	6" (300mm)	所需电压	AC100 / 4A(Normal), 15A(Peak) / 220VAC
Working Range	φ120mm (4.7")	Pressure source	5 kg/cm <sup>2</sup>
Die size	0.4mm x 0.4mm (45μm) (上表面检测用)	Vacuum	33kg/cm <sup>2</sup> (Substr. Vac. Pump)
定位行程	Length: 110" (2800mm) Width: 4.7" (120mm)		
产品厚度范围	Height: 40mm		
晶圆厚度范围	Asses CCD x 1.7" CCD x 112 wafers/Stage		

规格如有变更, 恕不另行通知

威控自动化机械股份有限公司  
WECON AUTOMATION CORP.

台湾新竹市埔顶路91号1217室  
No.127, Alley 95, Pudin Rd, Hsinchu City, Taiwan  
TEL:886-3-5734757 FAX:886-3-5734760

www.wecon.com.tw

## YT2500 LED Dispenser



# YT6400 LED Handler & YT6300 LED Tapping

*Company Profile*

*YT6400 LED Handler*



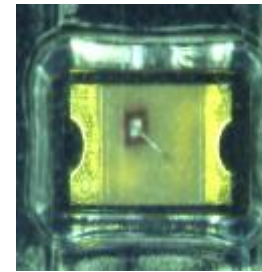
*YT6300 LED Tapping*



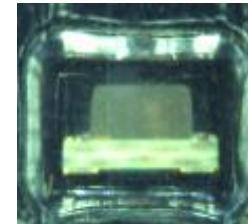
# 自動光學檢測系統 (Auto Optical Inspection)

Company Profile

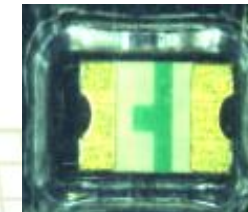
## YT 2210 Reel Type Components 自動光學檢測系統



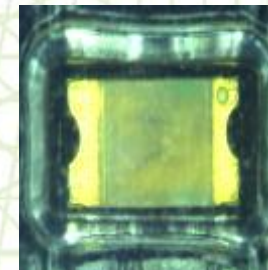
Polarity inverse package



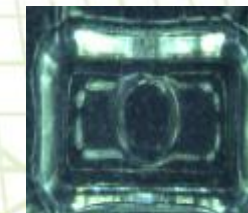
Tilt



Over turn



Mixed package



Empty

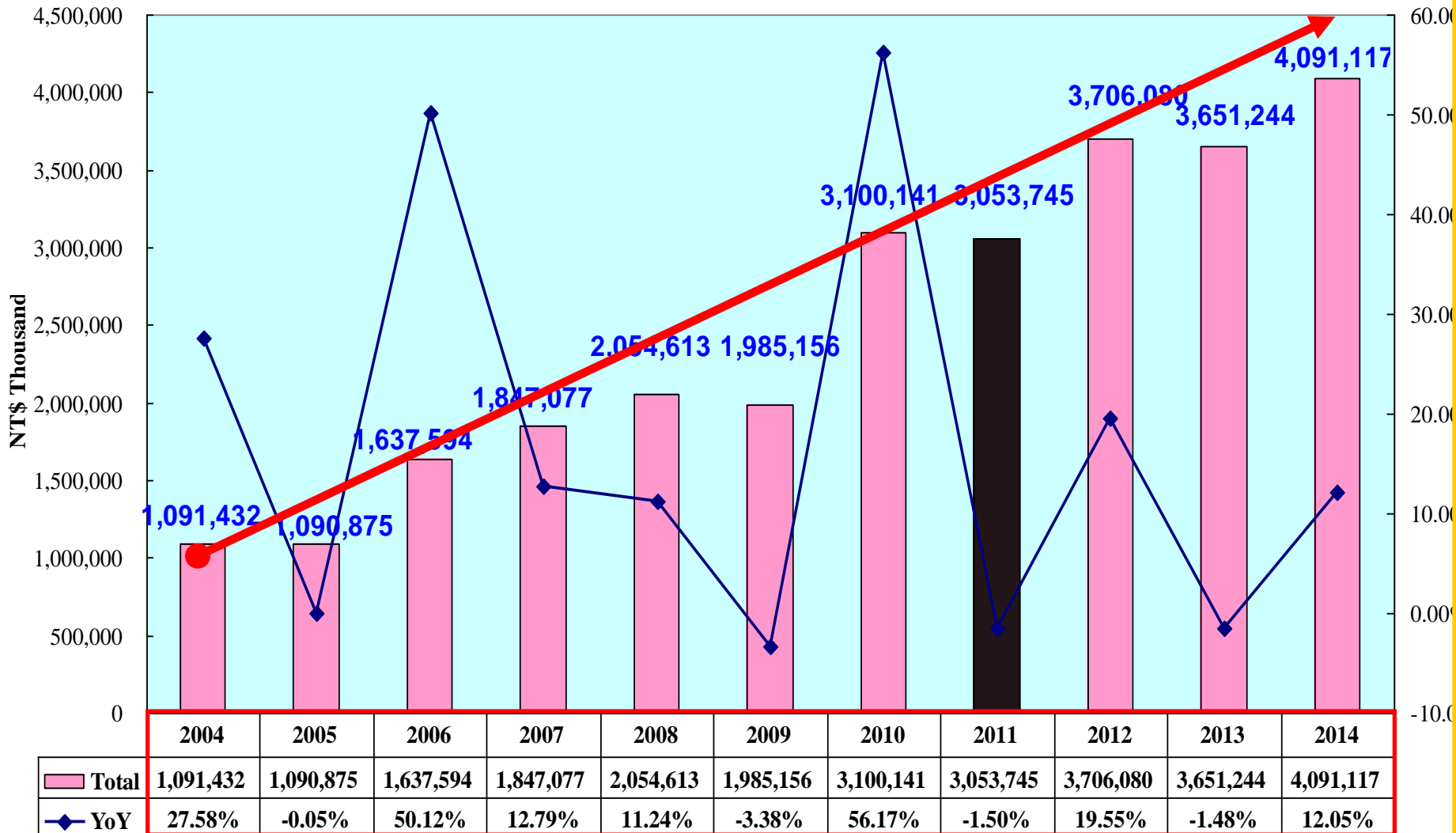
# 2014&2015 Combine Monthly Revenue

Company Profile  
NT\$(Thousand)

Business Item/Month		Jan.	Feb	Mar	Apr	May	Jun.	Jul.	Aug.	Sep	Oct.	Nov.	Dec.	Total	Share(%)
切割挑檢代工 Sawing & Sorting OEM	2014	100,553	100,934	122,235	121,114	143,088	144,661	152,796	148,797	148,784	143,055	123,642	108,900	1,326,017	38.43%
	2015	135,098	121,083	160,652	136,076	152,400	139,402	128,503	131,086	132,698	121,768			1,358,766	43.61%
	YoY	34.36%	19.96%	31.43%	12.35%	6.51%	-3.64%	-15.90%	-11.90%	-10.81%	-14.88%			2.47%	
	MoM	24.06%	-10.37%	32.68%	-15.30%	12.00%	-8.53%	-7.82%	2.01%	1.23%	-8.24%				
測試代工 Testing OEM	2014	130,380	125,550	169,353	165,193	169,592	180,817	191,855	196,815	187,063	176,062	159,529	159,462	1,692,680	49.05%
	2015	153,402	111,282	149,695	133,104	148,018	152,532	149,951	141,844	138,247	149,560			1,427,635	45.82%
	YoY	17.66%	-11.36%	-11.61%	-19.43%	-12.72%	-15.64%	-21.84%	-27.93%	-26.10%	-15.05%			-15.66%	
	MoM	-3.80%	-27.46%	34.52%	-11.08%	11.20%	3.05%	-1.69%	-5.41%	-2.54%	8.18%				
機器組裝等產品銷售 Own Product Sales	2014	5,629	37,431	67,395	43,886	72,346	53,993	40,504	43,099	35,554	32,164	25,572	63,314	432,001	12.52%
	2015	34,664	26,765	62,301	20,593	35,835	25,944	13,107	47,535	24,098	38,550			329,392	10.57%
	YoY	515.81%	-28.50%	-7.56%	-53.08%	-50.47%	-51.95%	-67.64%	10.29%	-32.22%	19.85%			-23.75%	
	MoM	-45.25%	-22.79%	132.77%	-66.95%	74.02%	-27.60%	-49.48%	262.67%	-49.30%	59.97%				
營業收入淨額(Unit:K) Sales Revenue (Net)	2014	236,562	263,915	358,983	330,193	385,026	379,471	385,155	388,711	371,401	351,281	308,743	331,676	3,450,698	100.0%
	2015	323,164	259,130	372,648	289,773	336,253	317,878	291,561	320,465	295,043	309,878			3,115,793	100.0%
	YoY	36.61%	-1.81%	3.81%	-12.24%	-12.67%	-16.23%	-24.30%	-17.56%	-20.56%	-11.79%			-9.71%	
	MoM	-2.57%	-19.81%	43.81%	-22.24%	16.04%	-5.46%	-8.28%	9.91%	-7.93%	5.03%				
營業收入淨額(累計) Sales Revenue (Total)	2014	236,562	500,477	859,460	1,189,653	1,574,679	1,954,150	2,339,305	2,728,016	3,099,417	3,450,698	3,759,441	4,091,117	--	--
	2015	323,164	582,294	954,942	1,244,715	1,580,968	1,898,846	2,190,407	2,510,872	2,805,915	3,115,793				
	YoY	36.61%	16.35%	11.11%	4.63%	0.40%	-2.83%	-6.37%	-7.96%	-9.47%	-9.71%				
總計代工成長 OEM Growth (Total)	2014	230,933	226,484	291,588	286,307	312,680	325,478	344,651	345,612	335,847	319,117	283,171	268,362	3,018,697	--
	2015	288,500	232,365	310,347	269,180	300,418	291,934	278,454	272,930	270,945	271,328			2,786,401	
	YoY	24.93%	2.60%	6.43%	-5.98%	-3.92%	-10.31%	-19.21%	-21.03%	-19.32%	-14.98%			-7.70%	
	MoM	7.50%	-19.46%	33.56%	-13.26%	11.60%	-2.82%	-4.62%	-1.98%	-0.73%	0.14%				

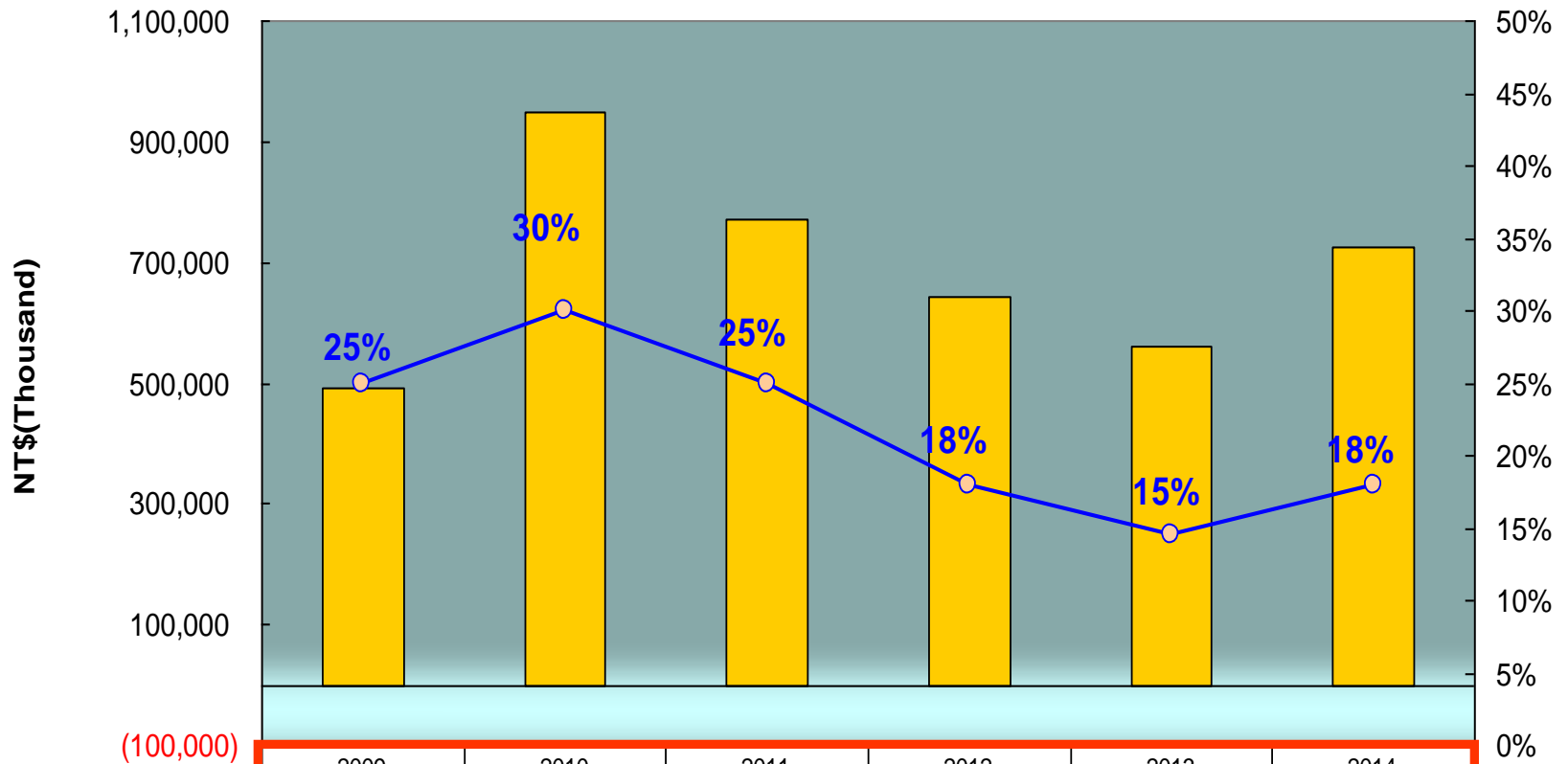
# 2004~2014 Combine Revenue Growth

Company Profile



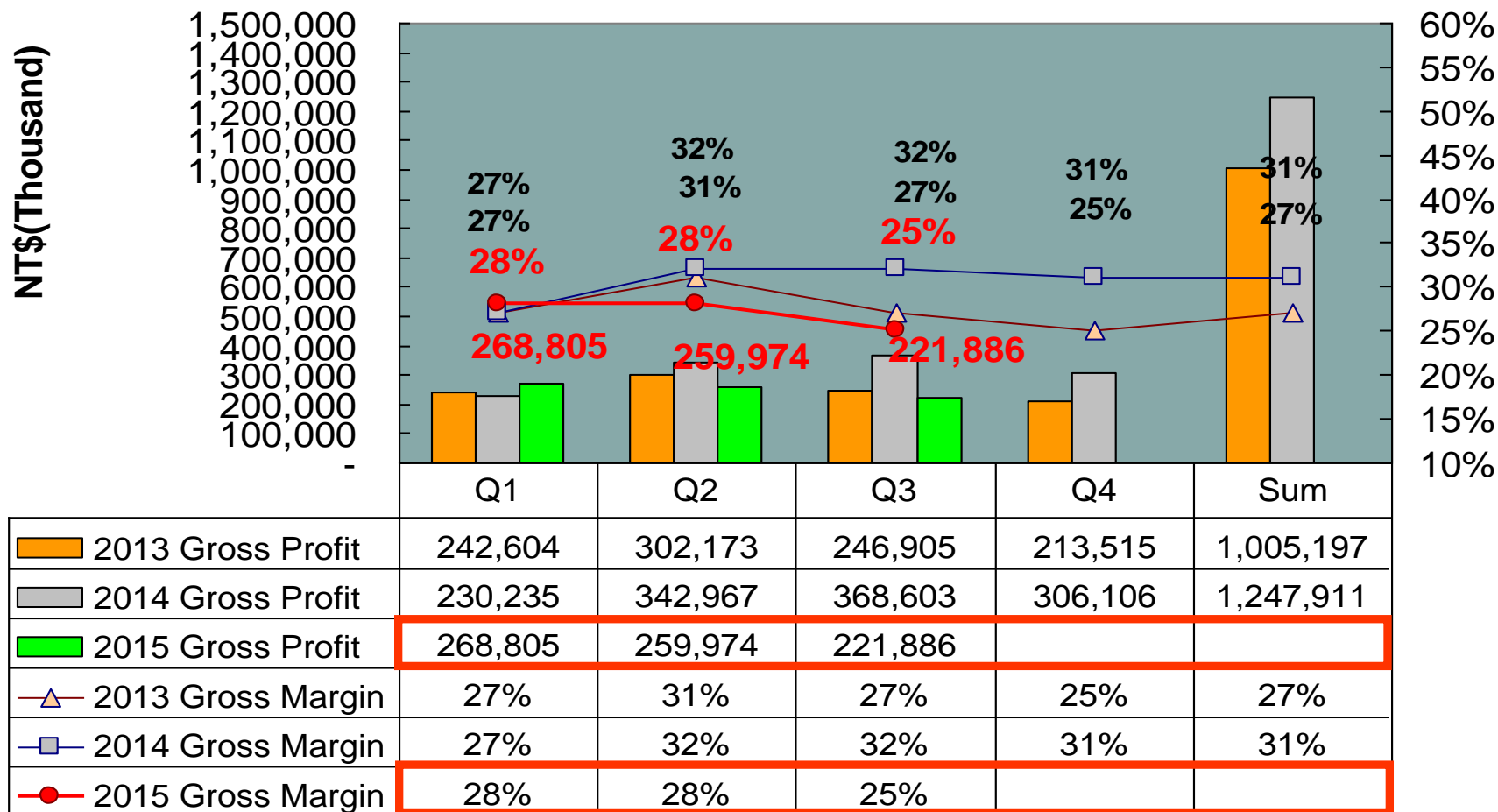
# 2009~2014 Combine Operating Income

Company Profile



	2009	2010	2011	2012	2013	2014
Operating Income	493,005	948,315	770,931	642,129	559,987	724,276
Operating Income Rate	25%	30%	25%	18%	15%	18%

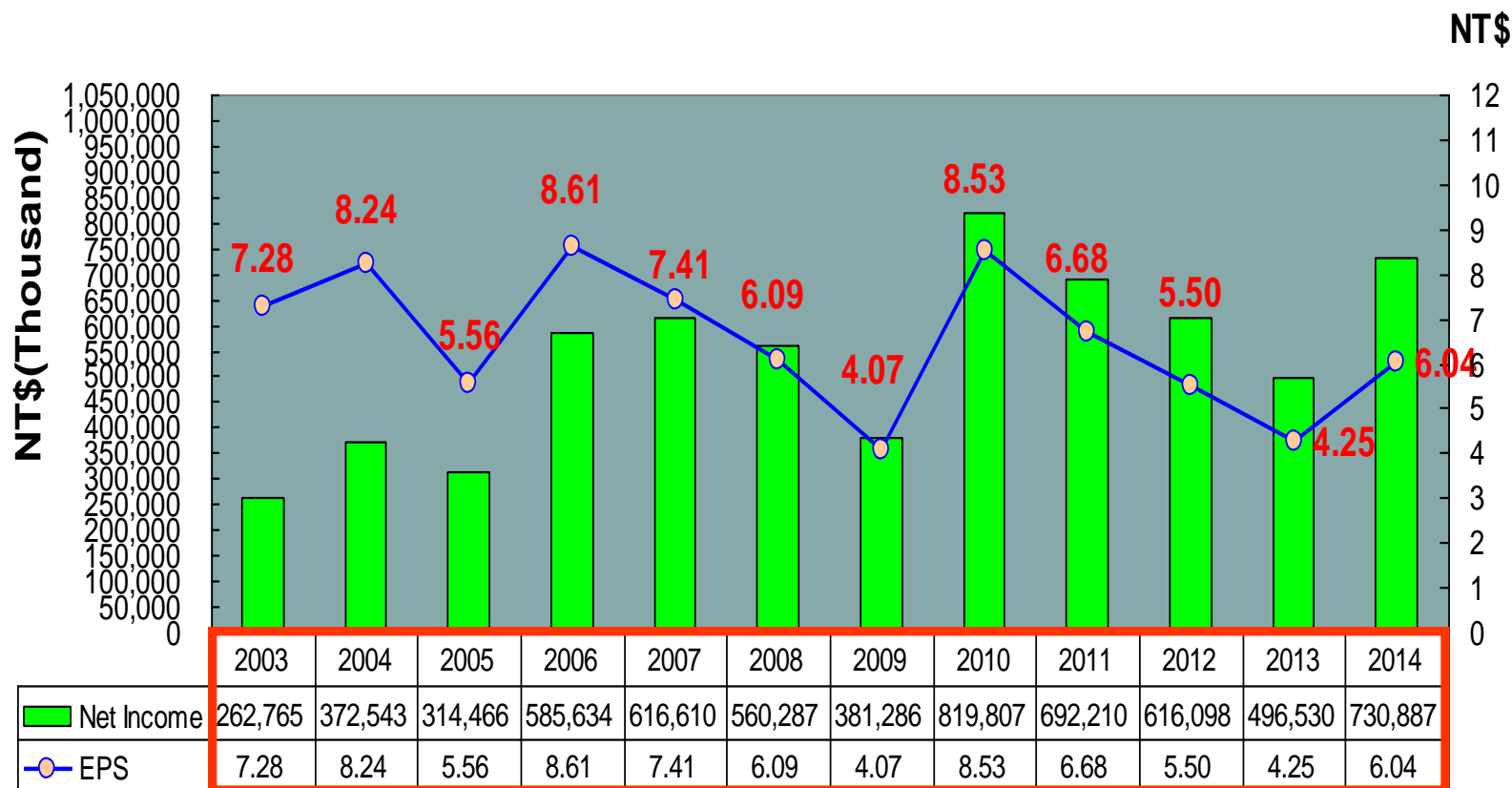
# 2013~2015 Combine Gross Profit





# Yearly Net Income & EPS

Company Profile



# Business Expansion Status(相關產業之狀況)

## Company Profile

- **半導體及光電切挑代工服務**：Q3 YOY成長QOQ降-8.3%、10月MOM降-8.24%、1~10月YOY成長2.47%、低於年初預期、因此將持續追蹤、另LED在新的應用提昇下、公司亦開發新專案,應可適時提供市場成長之需求、相信可挹助公司之營收成長。
- **IC測試系統及QFN測試包裝機、分類機開發**：成功的開發完成100MHZ 512/768 pins全功能IC測試機、針對多媒體、Digital TV及高速邏輯SOC產品並行測試、並導入量產、更高階機種亦將陸續上市、另研發出QFN測試包裝機及分類機、可應用於IC成品測試生產、更具備三合一功能(測試、外觀檢測及包裝)、以提昇IC測試代工服務之競爭優勢。
- **CIS、CCM、LED後段生產設備及AOI設備開發**：成功開發完成CIS(CMOS影像感測系統)、具備高速影像處理及完整電性測試之解決方案、並導入代工服務、挹助營收。自行開發之CCM(影像感測模組測試設備)、LED後段生產設備及AOI(自動光學檢測系統)等設備、因應市場需求將擴展銷售、AOI設備研發係以解決半導體及光電等產業在目檢之視覺盲點並可大幅節省人力、並已將光電技術結合影像分析等與自動化設備設計、成功研發出各類型外觀檢測機。  
設備銷售Q3 QOQ 成長2.87%、10月營收YOY成長19.85%MOM成長59.97%符合預期、因此將持續追蹤、相信在持續開發新產品及功能提昇下、展望未來應可持續挹助業績成長之動力。
- **半導體代工服務**：2015年Q3 QOQ微降-0.83%、10月營收MOM成長8.18%低於年初預期、因此將持續追蹤、而YTEC在持續開發新產品與互補及平衡的產品線發酵下(如LCD,RF.MEMS..etc)、展望未來應可持續挹助業績成長之動力。

# Share payout composition and history

Company Profile

項目		96年度 (2007)	97年度 (2008)	98年度 (2009)	99年度 (2010)	100年度 (2011)	101年度 (2012)	102年度 (2013)	103年度 (2014)	104年度 (2015)
		配95年度 Profit(2006)	配96年度 Profit(2007)	配97年度 Profit(2008)	配98年度 Profit(2009)	配99年度 Profit(2010)	配100年度 Profit(2011)	配101年度 Profit(2012)	配102年度 Profit(2013)	配103年度 Profit(2014)
現金股利		\$4.00	\$4.00	\$3.00	\$3.00	\$5.238	\$5.238	\$4.659	\$3.668	\$5.000
無償	盈餘配股	\$1.00	\$0.50	\$0.10	\$0.10			\$0.098	\$0.099	\$0.100
配股	資本公積配股	--	--	--	--	\$0.093	\$0.095	--	--	--
EPS		\$8.61	\$7.41	\$6.09	\$4.07	\$8.53	\$6.68	\$5.50	\$4.25	\$6.04

# 公司願景 Company Mission

Company Profile

著眼於國內外市場的開拓，讓久元成為立足台灣的整合性後段IC及LED代工服務廠，並朝放眼世界的自有產品、自有品牌邁進。

Based on the domestic and international marketing development, YTEC has gotten a foothold as an integrated back-end IC&LED OEM factory. YTEC moves forward, with it's own products, and Own Bench Marks.



# Q & A

*Company Profile*

# ☐ Thank you very much

