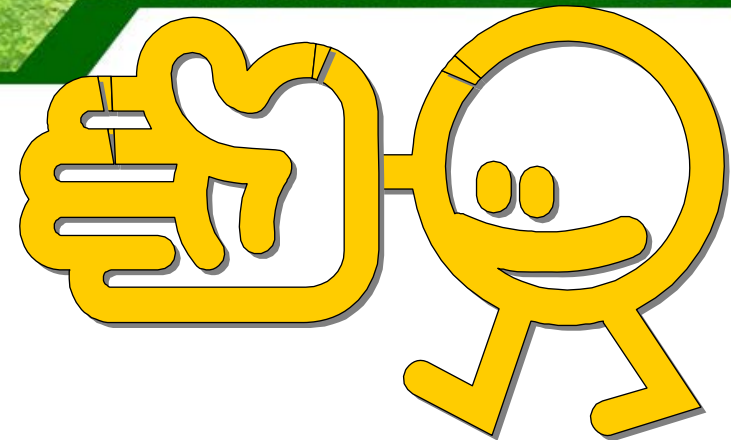


Welcome



Welcome



Brief Introduction

April 8th, 2014



2014 VISIT SCHEDULE @久元

Company Profile

Contents

Time

- | | |
|---|-------------|
| <input type="checkbox"/> Brief Introduction of YTEC | 14:00~14:20 |
| <input type="checkbox"/> Q & A | 14:20~15:30 |
| <input type="checkbox"/> Line Tour (Free) | 15:30~16:00 |

Contents

Company Profile

- Brief Introduction**
- Factory Overview**
- Company Milestone**
- Company Management Concept**
- OEM Services**
- R&D Roadmap and Own Product Development**
- Revenue Growth**
- Company Mission**



Brief Introduction

Company Profile

Found Time : 1991/July

Chairman : Bily Wang

President of Service Group : Jeff Chang

President of Own Product Group : Glen Chen

Employee : 996 persons

Capital : NTD 1176million (USD 39.7 million)

Factories : **Plant 1** : Special & substrate sawing

SBIP Plant : IC back-end turn-key service, ATE&AOI

Li Hsin Plant : LED back-end turn-key service

An Ping Plant : LED Testing & sorting

Xiamen/Changzhou Plant : LED Testing & sorting

CRT (Shenzhen) Plant : IC Testing & sorting

WuJiang MightYtek Plant : IC Assembly

Business Items :

- 1. Semiconductor and LED OEM**: IC testing, wafer sawing, grinding, chip sorting and LED testing, laser scribing, sorting and substrate sawing.
- 2. Design, manufacture and sales of semiconductor equipments**: Full-function IC tester, logic ,analog, Mixed-Signal IC Tester , LED tester, prober and sorter, CCM equipments, AOI system.

Factory Overview

Company Profile

Plant #1



SBIP Plant



Li-Hsin Plant



Hsinchu

Tainan

An-Ping Plant



YoungTek Electronics Corp.

Factory Overview

Company Profile

Changzhou YT Plant



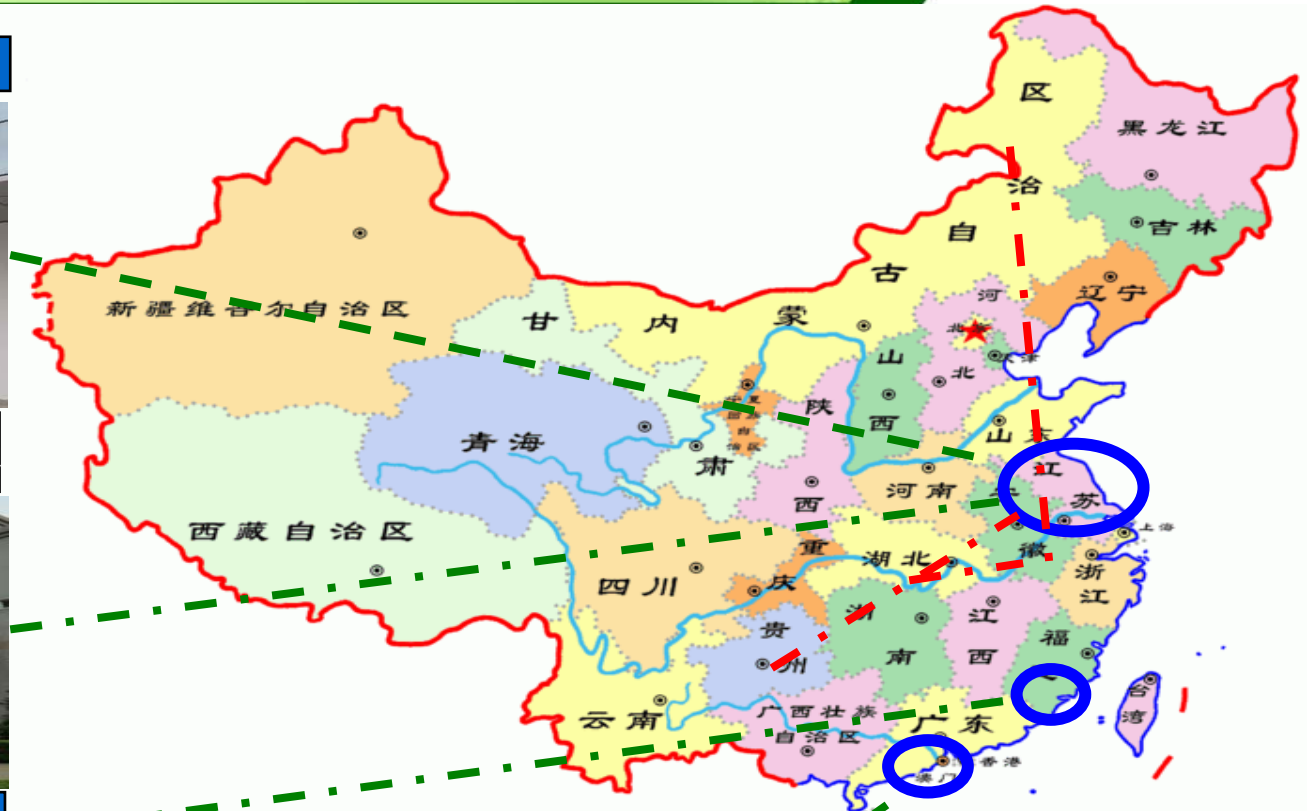
WuJiang MightYtek Plant



Xiamen YT Plant



CRT (Shenzhen) Plant



YoungTek Electronics Corp.

Company Milestone

Company Profile

- 1991/Jul. YTEC was founded and the capital is NTD \$ 5 million.
- 1998/Oct. Develop logic tester (Goblin) with 5 MHz/40 pins.
- 2000/Mar. Achieved the certification of ISO 9001
- 2000/Jul. Full-function IC tester was verified by industry agency with predominant product development project.
- 2002/Nov. SEC (Securities and Exchange Commission) approve YTEC to public stock.
- 2003/Nov. LED OEM service was established.
- 2003/Dec. Obtain OTC certification.
- 2004/Mar. Got the approval to establish the branch in Hsin chu SBIP.
- 2004/Mar.29 Listed in Taiwan stock exchange. (Stock No.: 6261)
- 2006/Mar. Signs the cooperation agreement of the IC test system technology. with Agilent Technologies
- 2006/Dec. Achieved the certification of ISO 14001 and OHSAS 18001.
- 2007/Jul. Develop Tainan An Ping plant for LED sorting.
- 2008/May Develop Li Hsin plant for LED test & sorting.
- 2008/Oct. Achieved the certification of ISO/TS 16949.
- 2009/May. To establish the Xiamen Young Tek Electronics Co., Ltd. to provide the LED Backend Turn-key service.
- 2009/Jun. Solar silicon substrate inspection system was verified Science Park Administration with development project.
- 2010/Mar. Develop SBIP plant for wafer grinding & sawing.
- 2010/Sep. To establish the Changzhou YoungTek Electronics Co., Ltd. to provide the LED Backend Turn-key service.
- 2011/Jan. Achieved the certification of IECQ QC080000.
- 2011/Dec. To establish the WuJiang MightYtek Semiconductor Co., Ltd. to provide the Semiconductor Backend Testing & Ass'y Turn-key service.
- 2012/Feb. To establish the Shenzhen Clear Rich Tech. Co., Ltd. to provide the Semiconductor Backend Testing service.
- 2012/May. Signs the cooperation memorandum, the expansion related marketing functions Development with Yoshikawa Semiconductor Co., Ltd.
- 2013.Dec. Achieved the 14th Industrial Excellence Award by Industry Agency .



YoungTek Electronics Corp.

Company Management Concept

Company Profile

經營理念：(Management Concept)

主人翁經營理念；下工程即是客戶。

Treat YTEC as your own company. (Host concept)

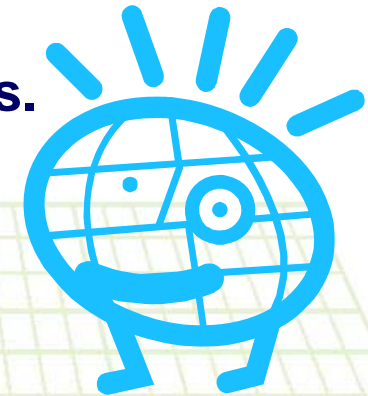
Treat all post projects and processes as our customers.

工作態度：(Working Attitude)

成功者找方法；失敗者找藉口。

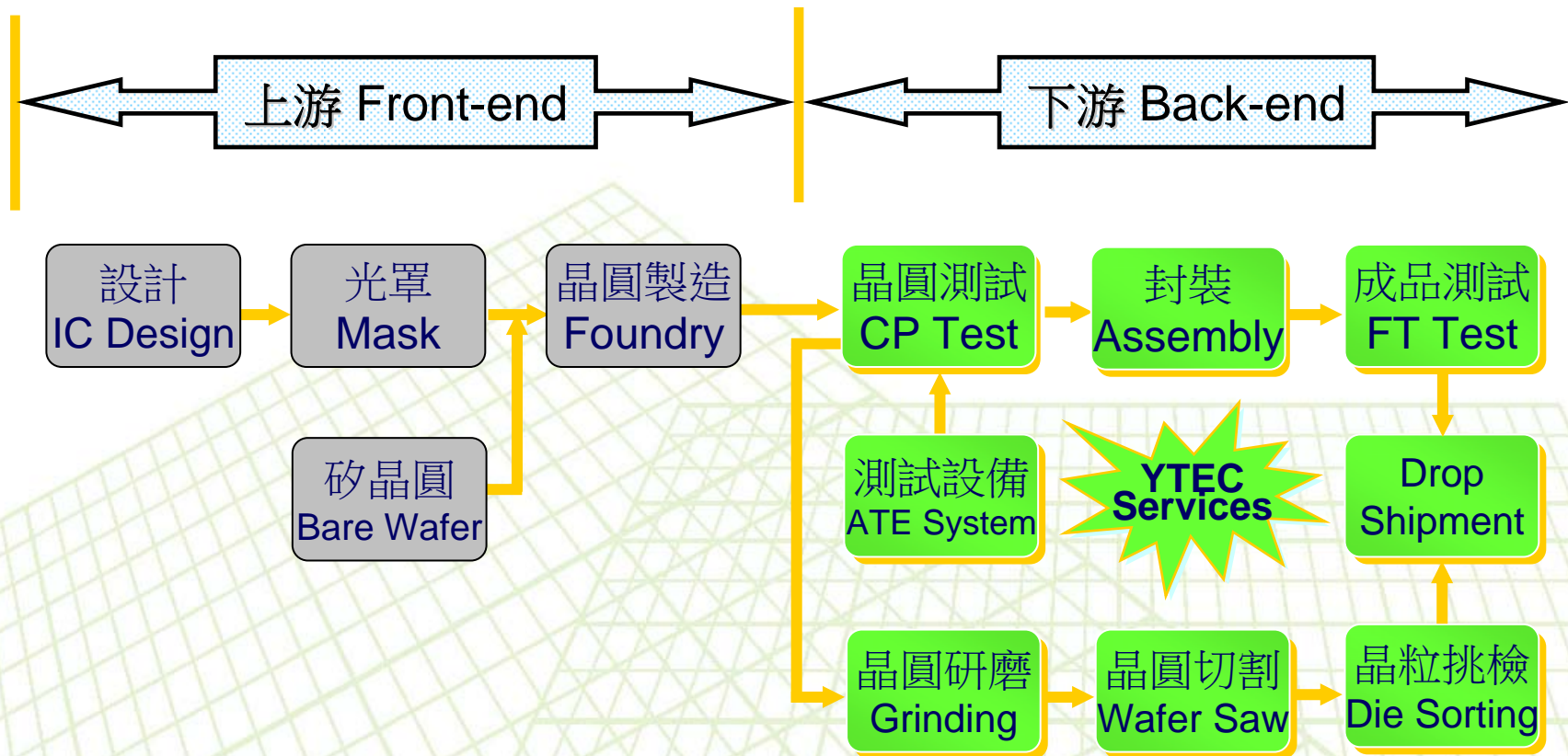
A successful person will find the way to overcome a challenge

Loser finds excuses.



IC OEM Services

Company Profile



專業測試代工服務(IC Testing OEM)

Company Profile

- ❑ 4"~12" Wafer testing (**CP**)、Test program and test kit development (Probe-card design and manufacture).
- ❑ IC packaging testing (**FT**)、Package type : DIPs、T/SOPs、L/QFPs、QFN、L/BGA...
- ❑ PC peripheral product、Logic、Analog、Mixed-signal、No-volatile memory、MCU、LCD driver IC、High speed/ High pin count (Scud-1A 512C) testing.
CIS(CMOS Image Sensor)、RF、SoC product testing
- ❑ Others : Laser trimming、Lead scanning、Test program and test kit development technical support **Turn-key service** (For example: PKG assembly、Tape-reel、Drop-shipment...).



研磨、切割及挑檢代工服務 (Grinding, Sawing, P&P Service)

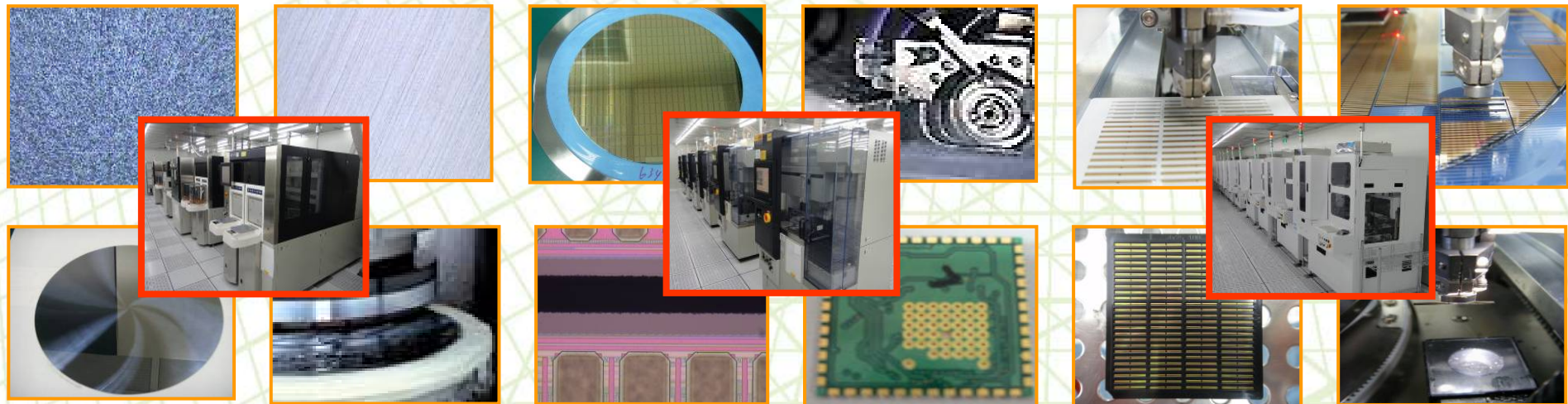
Company Profile

❑ IC Grinding、Sawing、Pick & Place

- 4"~12" Wafer back-side grinding、sawing、chip pick & place services for Consumer and gold bump COG products。
- Pick & Place Chip Back-side AOI inspection System inside。

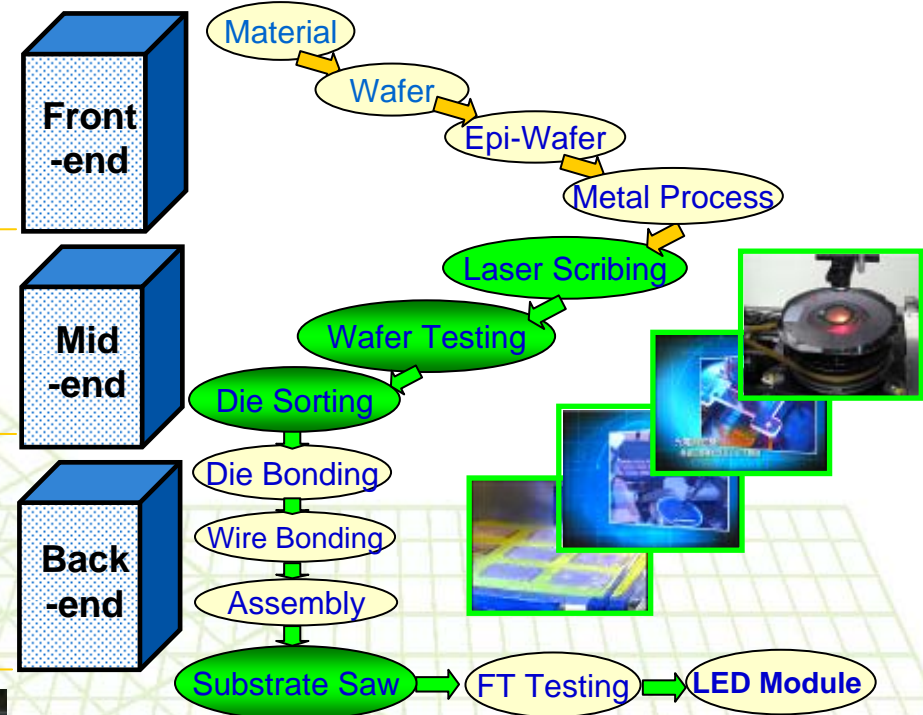
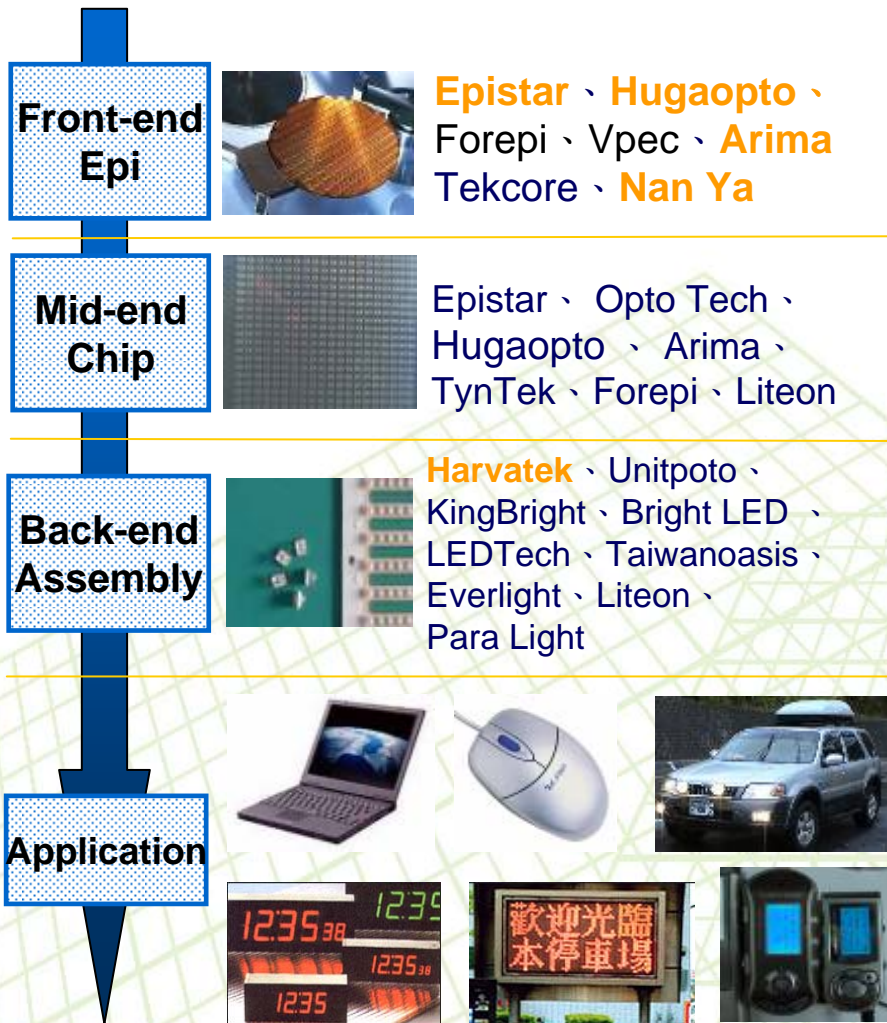
❑ Substrate Sawing

- LED package substrate、Glass substrate、Ceramic Substrate、Ceramic+FR4、Lead-frame、QFN package、HTCC、LTCC、PCB。



LED OEM Services

Company Profile



- **Front-end Product** : Wafer · Epi-Wafer · For example GaAs · GaAsP · AlGaAs · AlGaInP
- **Mid-end Product** : Laser Scribing · Wafer Testing and Pick & Place Die-sorting
- **Back-end Product** : Lamp · Display · SMD · IR transmission module · Optical Communication product · Substrate Saw

IC Testing Application Equipment

Company Profile



YTS100

全功能高頻SoC IC
測試機

Scud-1A



YT6100

Fat Type
IC測試分組機



YT6200

QFN測試包裝機

YT5100 & Scud-1A IC Tester

Company Profile

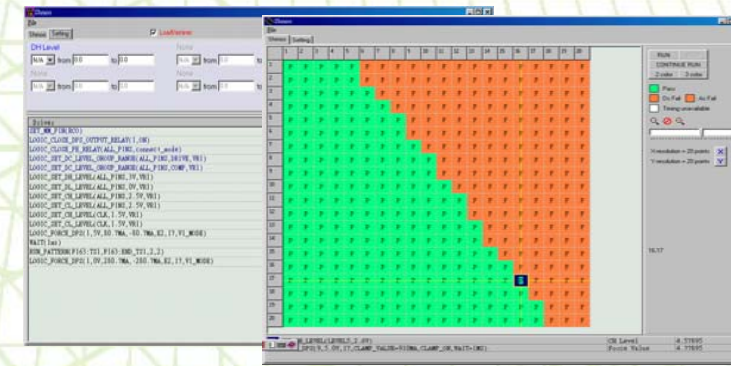
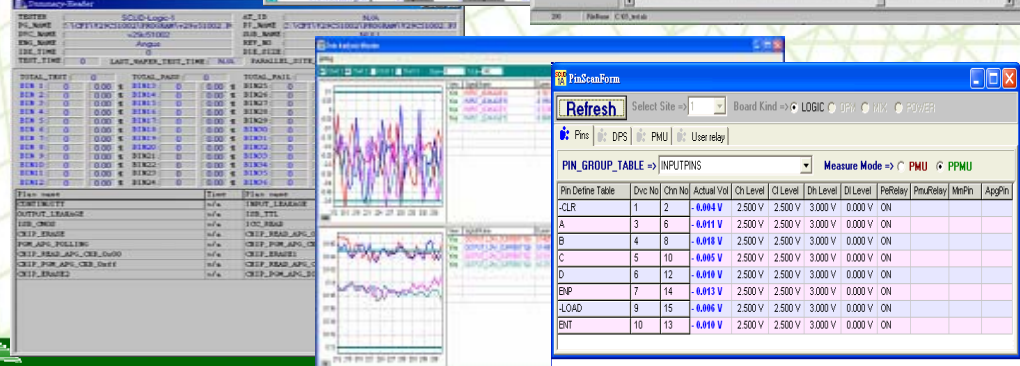
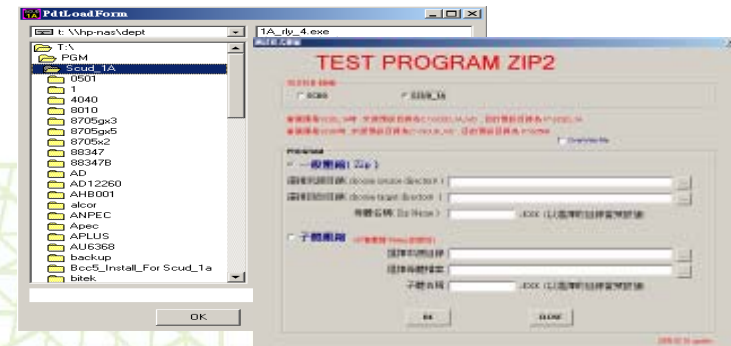
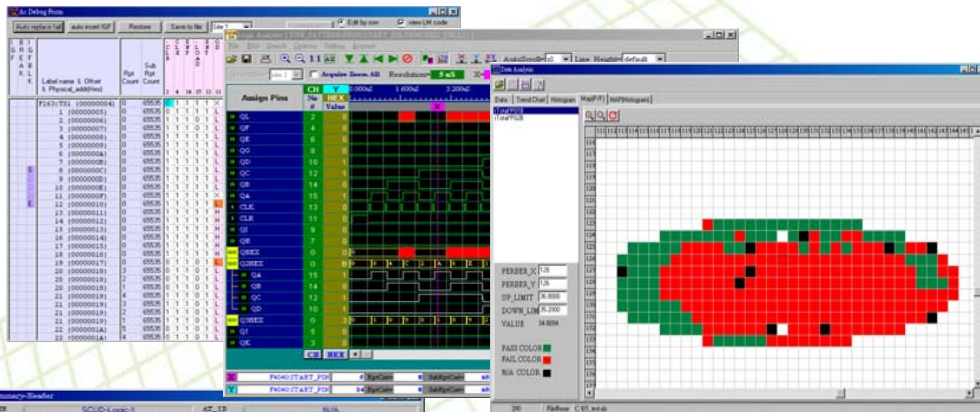
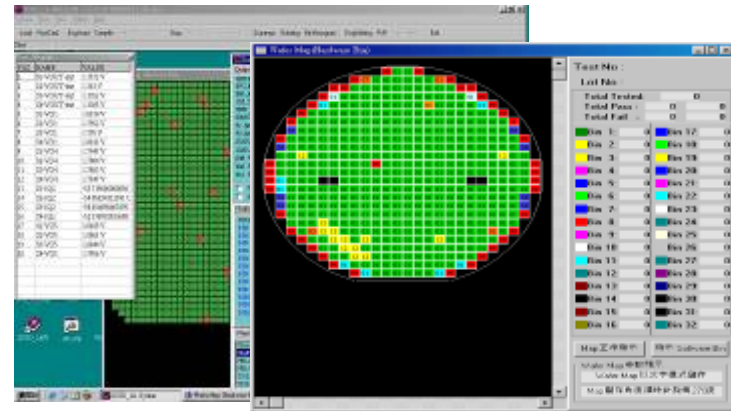
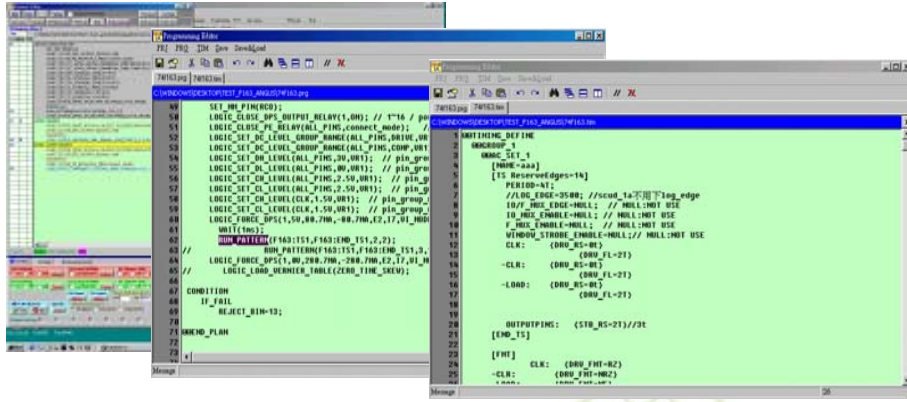
YT5100 High Speed Soc IC Tester

Scud-1A Fully Auto IC Tester



Scud-1A IC Tester System Environment

Company Profile



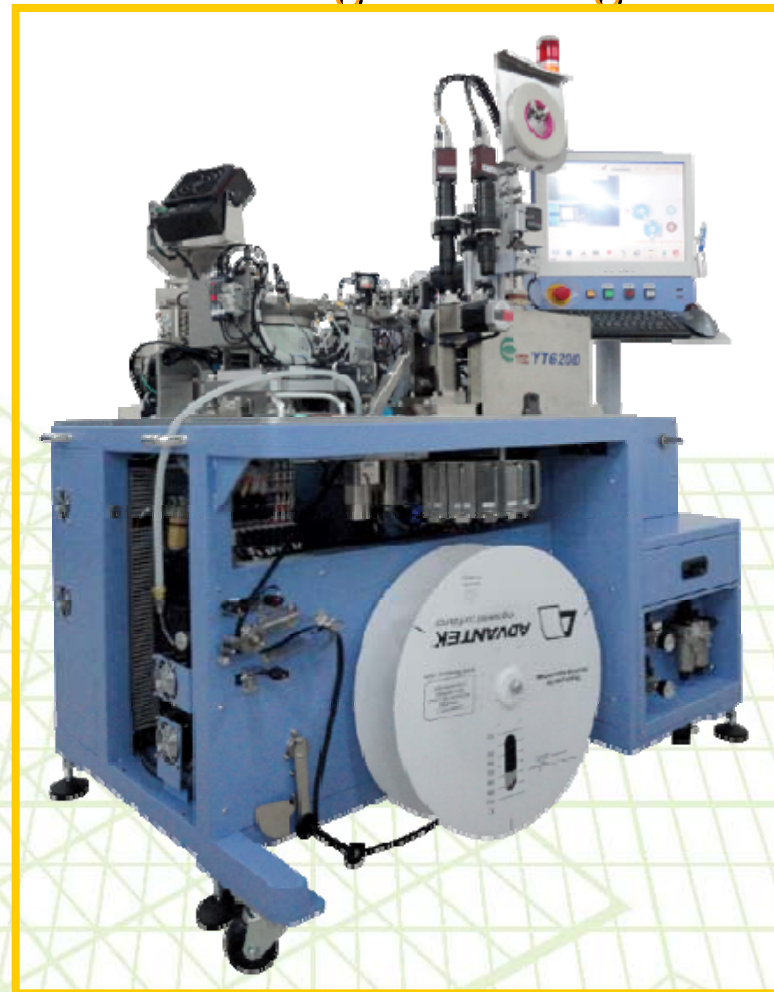
YT6110 IC Handler / YT6200 QFN Testing & Packing

Company Profile

YT6110 IC Handler



YT6200 QFN
Testing & Packing



影像感測模組測試設備 CCM (CMOS/Compact Camera Module)

Company Profile

影像感測模組測試設備

CCM YT3100



全自動影像感測模組測試設備

CCM YT3300



YT1100 LED Tester(YT1100 LED 測試機)

Company Profile

□ YTSD01 → YTSD02 → YT1000 HV LED Tester(8000V ESD)
→ YT1100 HV LED Tester (Multi-station)



DB-260 LED Prober

Company Profile

PB-260 LED Prober

PB-260 LED 晶粒檢測機 LED Chip Probe Station



**自動換探針功能
針痕監控系統
晶粒外觀辨識功能**





■ 鏡分球收光高度6mm
■ 複合式收光系統

PB-260

雙池、變角、PAD、極化辨識

特色：

- 自動換探針功能 **NEW**
- 針痕監控系統 **NEW**
- 探針高度感知 **NEW**
- 雙池、變角、PAD、極化辨識系統
- 鏡分球收光高度6mm
- 自動設定起始點(Auto Alignment Key Search)
- 簡易的操作畫面
- Z軸採用直立式線性馬達運動精度高結構穩定
- 可依客戶需求，同時安裝複分球與顯微鏡收光系統
- 鏡分球固定座採用三軸精密微調平台
- 探針使用快拆式底座，探針維護便利
- 可依客戶需求搭配導電或不導電平台

Index Time Table :

time (msec)	晶粒間距(mm)			
	8	12	20	40
Z軸上升高度 (mm)	6	73	79	66
	8	75	81	68
	12	85	90	97
	14	90	95	102

規格(Specification)

Chuck 種類	4" MAX.	1.58mm or 1.57mm
Water 特性	0.1mm x 472mm	0.1mm 厚度
X-Y 軸行程	1.0um	0.001"
X-Y 軸精度	< 2.14 μm	0.0005"
X-Y 軸精度 (Max. with CO2)	10um	0.0004"
Z軸行程	1.0um	0.0001"
Z軸行程	5.4 μm	0.000214"
Communication Interface	TTL, RS232	4.5 KHz @ 7-48 VDC
機台尺寸	Width = 1165mm, Depth = 917mm, Height = 1843mm	重量 470kg
	(Insert and lower light)	最高220V / 110V, 50Hz, 6A

超額如有變更，恕不另行通知



威控自動化
www.wecon.com.tw

威控自動化機械股份有限公司
WECON AUTOMATION co.,ltd.

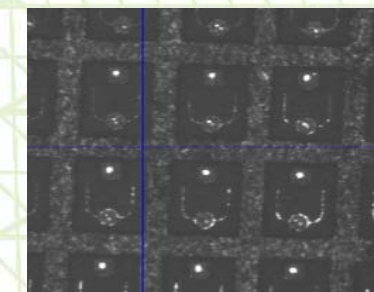
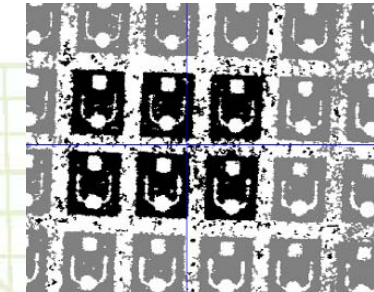
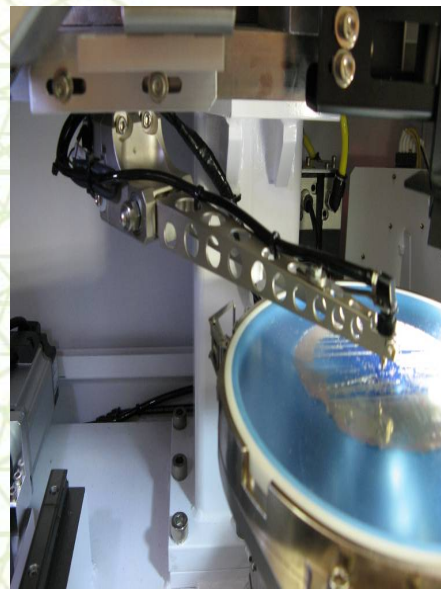
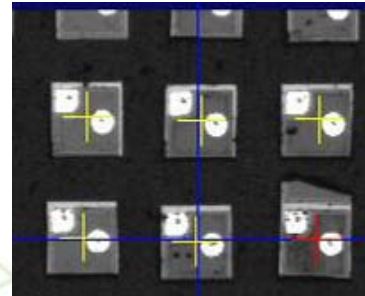
新竹市城頂路99巷127號
No.127, Alley 99, Pudin Rd., Hsinchu City, Taiwan
TEL:886-3-5734757 FAX:886-3-5734760

www.wecon.com.tw

LS-360 LED Sorter

Company Profile

LS-360 LED Sorter



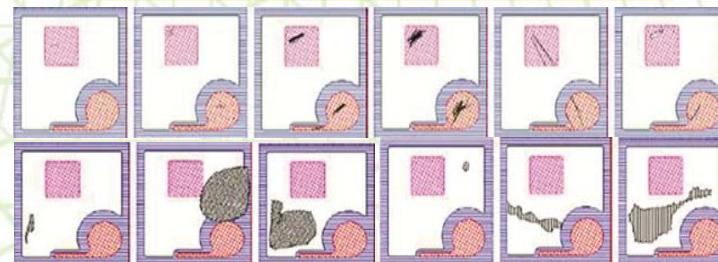
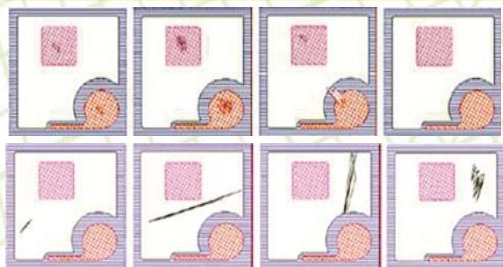
自動光學檢測系統 (Auto Optical Inspection)

Company Profile

YT 5311 LED Chip/Wafer/Mask
半自動光學檢測系統



YT 2800 LED Chip/Wafer/Mask
全自動光學檢測系統



自動光學檢測應用(AOI Application)

Company Profile

被動元件、LED
產品六面外觀檢測



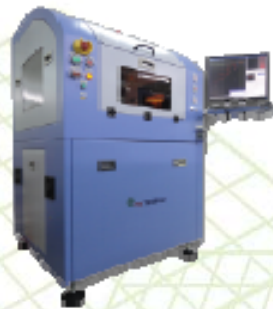
YT2300

元件六面外觀
檢測機

YT2330

被動元件六面外觀
檢測機

LED及被動元件散熱基板
產品之外觀檢測



YT2700

LED及被動元件
散熱基板之2D AOI
檢測機



YT2705

LED及被動元件
散熱基板之2D AOI
檢測機
(Auto Load/Unload)



YTEC YoungTek Electronics Corp.

自動光學檢測系統 (Auto Optical Inspection)

Company Profile

YT 2300(YT2330) Component AOI

自動光學檢測系統(雙軌)



Reel type taped products:

- Resistor
- Capacitor
- Inductor
- LED
- IC
- Relay
- Connector
- Fuse



LED Assembly Application Equipment

Company Profile



YoungTek Electronics Corp.

DB-159 Die Bonder & YT2500 LED Dispenser

Company Profile

DB-159 Die Bonder

YT2500 LED Dispenser

DB-159 泛用型高速固晶机
High Speed Multiple Applications Epoxy Die Bonder

UPH **15K**
Cyc. Time 230ms

超宽工作行程: 120 x 280mm
顶针自动测高, 防撞设计
多种制程选择
开放式参数设定



WECON
威控自动化
www.wecon.com.tw

DB-159

多制程选择

- ◆ 个别产程角度控制功能(图1)
- ◆ CAD程式输入档案功能(图2)
- ◆ 多晶圆功能(图3)
- ◆ 特殊点胶固晶功能(图4)
- ◆ 多型影像寻晶功能



影像辨识系统 (图5)

- ◆ 可执行外观检查标准: 3D测、PAD污染检查、缺角、破裂、氧化层污染检查
- ◆ 具有缺品、掉晶检查功能
- ◆ 影像测料可空料控制
- ◆ 晶圆位置设定能以方形或圆形材料显示, 以提高设定精度 (图6)
- ◆ 晶圆旋转修正功能

规格(Specification)

制程速度 UPH	15K (SMD) 30K (裸晶, 无点 TSMC)	影像辨识系统 CCD	25K Die level
Bonding accuracy	X: ±0.01mm, Y: ±0.01mm	Resolution	1024x768 pixel
Bonding zone	Max. 625 mm/die	测高精度	±10 μm
晶片尺寸范围		载晶平台 重量	180kg
Wafer Ring Dia	6" (152mm)	Dimension	1310mm x 1200mm x 1900mm
Working Range	±120mm (X/Y)	控制精度	
Die size	0.5mm - 8.0mm (10x10mm) 最大高度 4mm	Power Req.	AC220V / 4A(Normal), 120V(16A) / 2200W
工作行程 Length	110" (2800mm)	Pneumatic source	5 kg/cm ²
Height	4.7" (120mm)	Vacuum	0.5kg/cm ² (0.5bar Vac. Pump)
产品重量 Weight	400kg		
载晶器重量	Auto CCD x 11" LCD x X/Y/Z axis Stage		

威控自动化, 您的最佳选择

威控自动化机械股份有限公司
WECON AUTOMATION CORP.

台湾新竹市城东路112号
No.112, Alley 95, Kubin Rd, Hsinchu City, Taiwan
TEL:086-3-2734757 FAX:086-3-2734760

www.wecon.com.tw



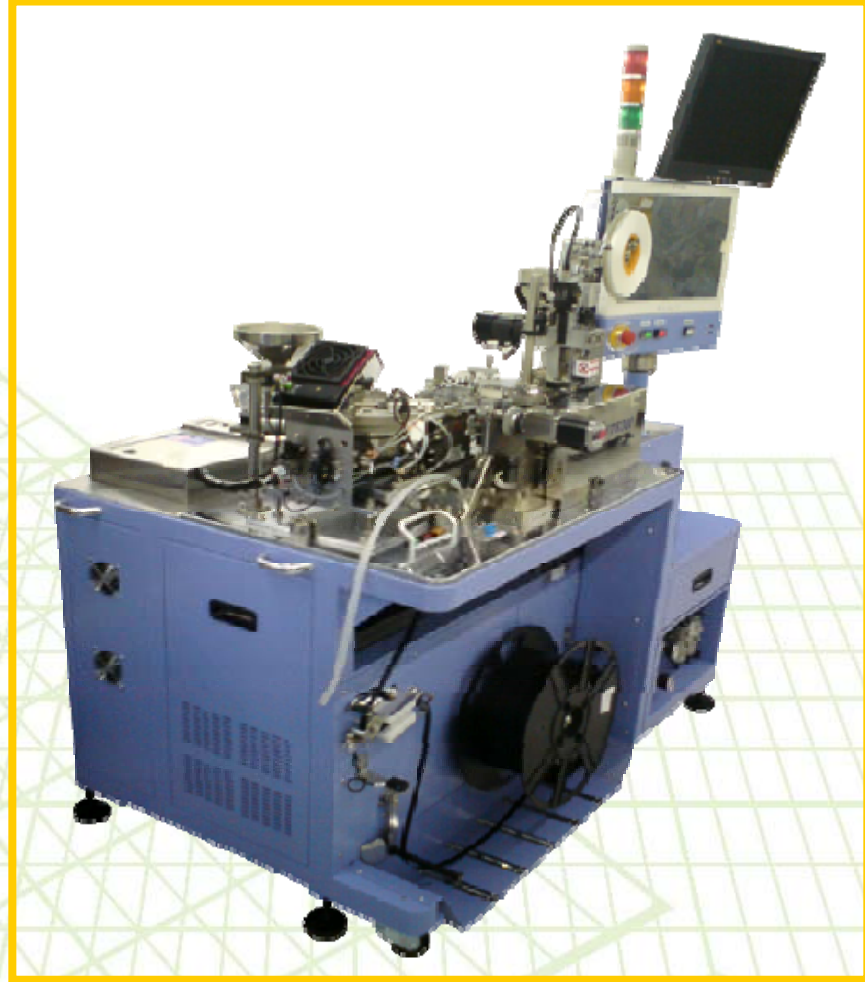
YT6400 LED Handler & YT6300 LED Tapping

Company Profile

YT6400 LED Handler



YT6300 LED Tapping



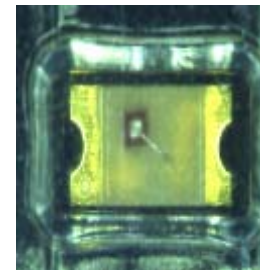
YoungTek Electronics Corp.

自動光學檢測系統 (Auto Optical Inspection)

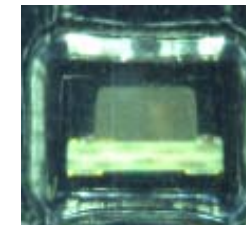
Company Profile

YT 2210 Reel Type Components

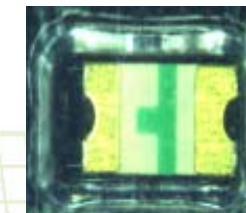
自動光學檢測系統



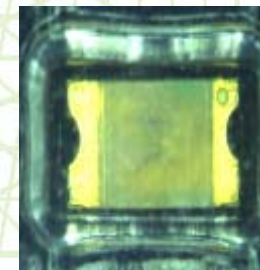
Polarity inverse package



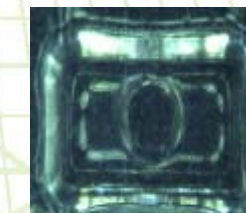
Tilt



Over turn



Mixed package



Empty

Revenue Growth

2012&2013 Combine Monthly Revenue

Company Profile

NT\$(Thousand)

Business Item/Month	Jan.	Feb	Mar	Apr	May	Jun.	Jul.	Aug.	Sep	Oct.	Nov.	Dec.	Total	Share(%)	
切割挑檢代工 Sawing & Sorting OEM	2012	74,341	100,273	114,355	119,873	124,099	126,741	129,216	119,084	127,305	119,713	112,670	118,285	1,385,955	37.40%
	2013	103,440	89,967	111,738	111,642	104,798	108,814	112,497	113,890	115,743	108,104	103,347	105,030	1,289,010	35.30%
	YoY	39.14%	-10.28%	-2.29%	-6.87%	-15.55%	-14.14%	-12.94%	-4.36%	-9.08%	-9.70%	-8.27%	-11.21%	-6.99%	
	MoM	-12.55%	-13.02%	24.20%	-0.09%	-6.13%	3.83%	3.38%	1.24%	1.63%	-6.60%	-4.40%	1.63%		
測試代工 Testing OEM	2012	127,925	145,751	155,306	178,992	193,854	192,035	208,696	184,208	166,191	180,667	156,769	145,921	2,036,315	54.95%
	2013	169,597	137,091	159,963	185,757	174,540	148,299	167,030	156,156	158,739	150,852	140,718	189,991	1,938,733	53.10%
	YoY	32.58%	-5.94%	3.00%	3.78%	-9.96%	-22.78%	-19.96%	-15.23%	-4.48%	-16.50%	-10.24%	30.20%	-4.79%	
	MoM	16.23%	-19.17%	16.68%	16.12%	-6.04%	-15.03%	12.63%	-6.51%	1.65%	-4.97%	-6.72%	35.02%		
機器組裝等產品 銷售 Own Product Sales	2012	5,011	5,077	21,899	29,823	83,454	39,695	32,838	12,097	17,374	16,741	9,982	9,819	283,810	7.66%
	2013	23,543	42,490	62,096	58,475	50,678	45,760	38,273	21,051	30,352	34,939	4,449	11,395	423,501	11.60%
	YoY	369.83%	736.91%	183.56%	96.07%	-39.27%	15.28%	16.55%	74.02%	74.70%	108.70%	-55.43%	16.05%	49.22%	
	MoM	139.77%	80.48%	46.14%	-5.83%	-13.33%	-9.70%	-16.36%	-45.00%	44.18%	15.11%	-87.27%	156.12%		
營業收入淨額 (Unit:K) Sales Revenue (Net)	2012	207,277	251,101	291,560	328,688	401,407	358,471	370,750	315,389	310,870	317,121	279,421	274,025	3,706,080	100.0%
	2013	296,580	269,548	333,797	355,874	330,016	302,873	317,800	291,097	304,834	293,895	248,514	306,416	3,651,244	100.0%
	YoY	43.08%	7.35%	14.49%	8.27%	-17.79%	-15.51%	-14.28%	-7.70%	-1.94%	-7.32%	-11.06%	11.82%	-1.48%	
	MoM	8.23%	-9.11%	23.84%	6.61%	-7.27%	-8.22%	4.93%	-8.40%	4.72%	-3.59%	-15.44%	23.30%		
營業收入淨額(系 計) Sales Revenue (Total)	2012	207,277	458,378	749,938	1,078,626	1,480,033	1,838,504	2,209,254	2,317,366	2,835,513	3,152,634	3,432,055	3,706,080	-	--
	2013	296,580	566,128	899,925	1,255,799	1,585,815	1,888,688	2,206,488	2,497,585	2,802,419	3,096,314	3,048,248	3,651,244		
	YoY	43.08%	23.51%	20.00%	16.43%	7.15%	2.73%	-0.13%	7.78%	-1.17%	-1.79%	-11.18%	-1.48%		
	MoM														
總計代工成長 OEM Growth (Total)	2012	202,266	246,024	269,661	298,865	317,953	318,776	337,912	303,292	293,496	300,380	269,439	264,206	3,422,270	--
	2013	273,037	227,058	271,701	297,399	279,338	257,113	279,527	270,046	274,482	258,956	244,065	295,021	3,227,743	
	YoY	34.99%	-7.71%	0.76%	-0.49%	-12.14%	-19.34%	-17.28%	-10.96%	-6.48%	-13.79%	-9.42%	11.66%	-5.68%	
	MoM	3.34%	-16.84%	19.66%	9.46%	-6.07%	-7.96%	8.72%	-3.39%	1.64%	-5.66%	-5.75%	20.88%		

2013&2014 Combine Monthly Revenue

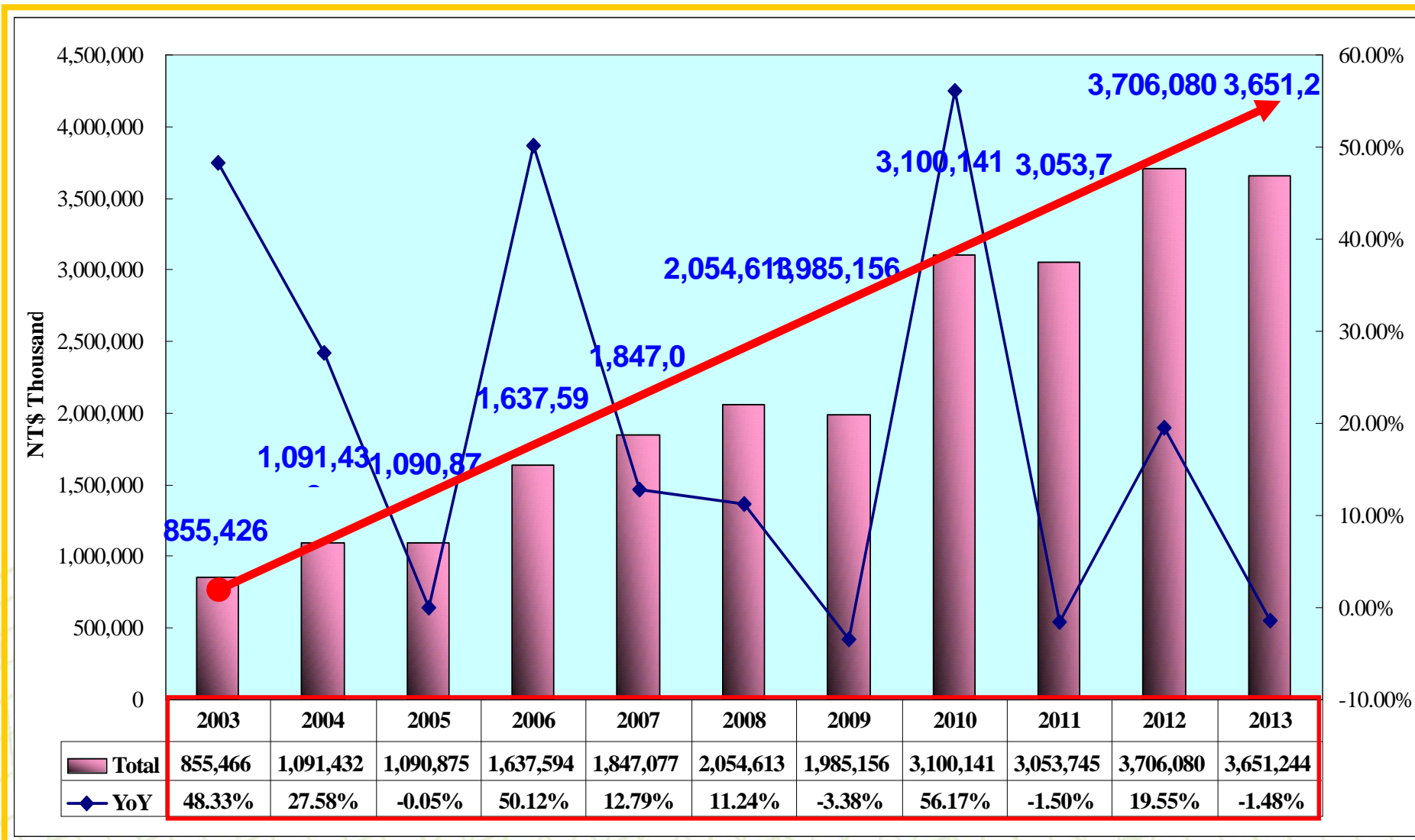
Company Profile
NT\$(Thousand)

Business Item/Month	Jan.	Feb	Mar(e)	Apr	May	Jun.	Jul.	Aug.	Sep	Oct.	Nov.	Dec.	Total(e)	Share(%)	
切割挑檢代工 Sawing & Sorting OEM	2013	103,440	89,967	111,738	111,642	104,798	108,814	112,497	113,890	115,743	108,104	103,347	105,030	305,145	33.91%
	2014	100,469	100,920	122,235										323,624	37.69%
	YoY	-2.87%	12.17%	9.39%										6.06%	
	MoM	-4.34%	0.45%	21.12%											
測試代工 Testing OEM	2013	169,597	137,091	159,963	185,757	174,540	148,299	167,030	156,156	158,739	150,852	140,718	189,991	466,651	51.85%
	2014	130,233	125,498	168,748										424,479	49.44%
	YoY	-23.21%	-8.46%	5.49%										-9.04%	
	MoM	-31.45%	-3.64%	34.46%											
機器組裝等產品銷售 Own Product Sales	2013	23,543	42,490	62,096	58,475	50,678	45,760	38,273	21,051	30,352	34,939	4,449	11,395	128,129	14.24%
	2014	5,630	37,431	67,395										110,456	12.87%
	YoY	-76.09%	-11.91%	8.53%										-13.79%	
	MoM	-50.59%	564.85%	80.05%											
營業收入淨額 (Unit:K) Sales Revenue (Net)	2013	296,580	269,548	333,797	355,874	330,016	302,873	317,800	291,097	304,834	293,895	248,514	306,416	899,925	100.0%
	2014	236,332	263,849	358,378										858,559	100.0%
	YoY	-20.31%	-2.11%	7.36%										-4.60%	
	MoM	-22.87%	11.64%	35.83%											
營業收入淨額(系 計) Sales Revenue (Total)	2013	296,580	566,128	899,925	1,255,799	1,585,815	1,888,688	2,206,488	2,201,005	2,802,419	3,096,314	3,344,828	3,651,244	--	--
	2014	236,332	500,181	858,559											
	YoY	-20.31%	-11.65%	-4.60%											
總計代工成長 OEM Growth (Total)	2013	273,037	227,058	271,701	297,399	279,338	257,113	279,527	270,046	274,482	258,956	244,065	295,021	771,796	--
	2014	230,702	226,418	290,983										748,103	
	YoY	-15.51%	-0.28%	7.10%										-3.07%	
	MoM	-21.80%	-1.86%	28.52%											

□ Note : (e)表示預估值(estimate)。

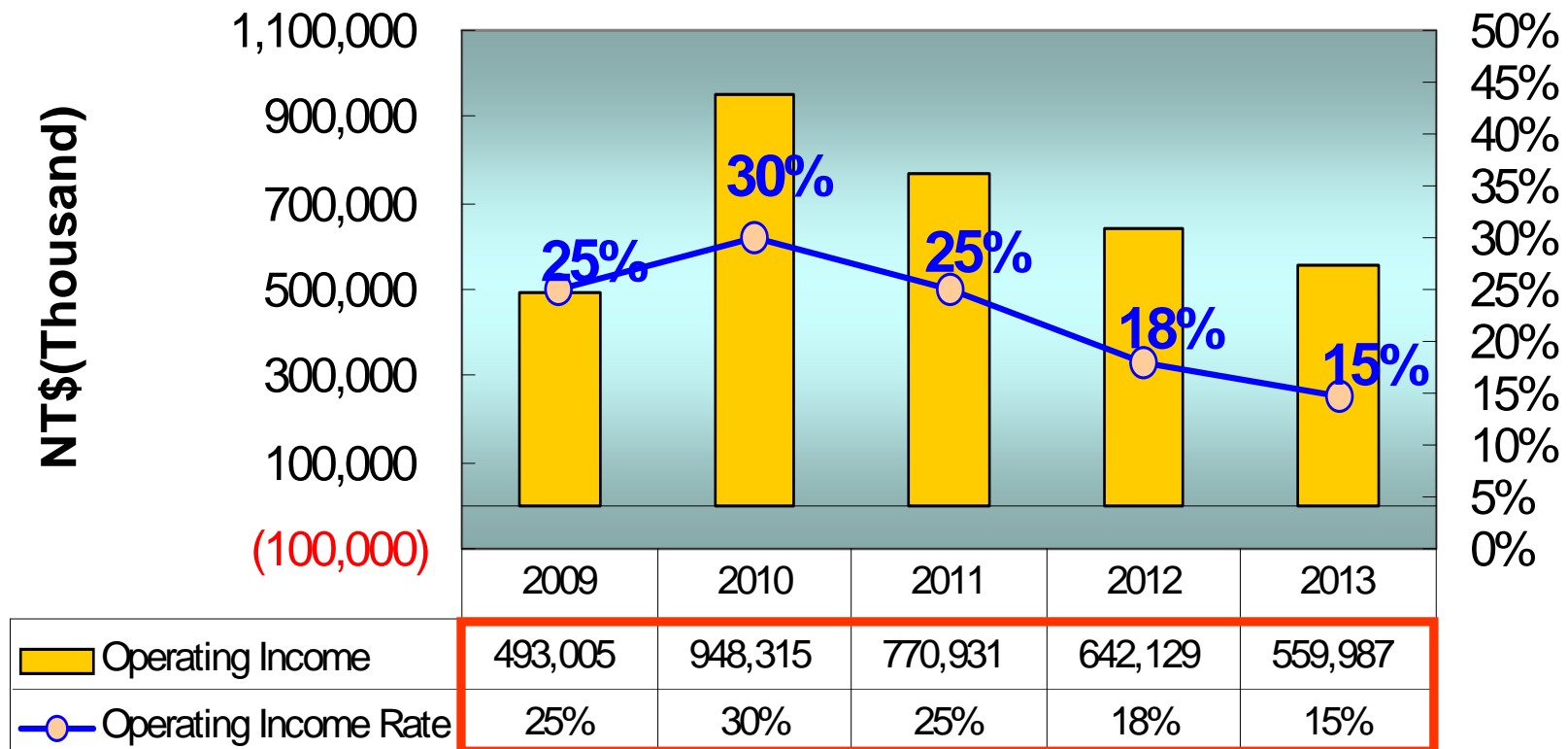
2003~2013 Combine Revenue Growth

Company Profile



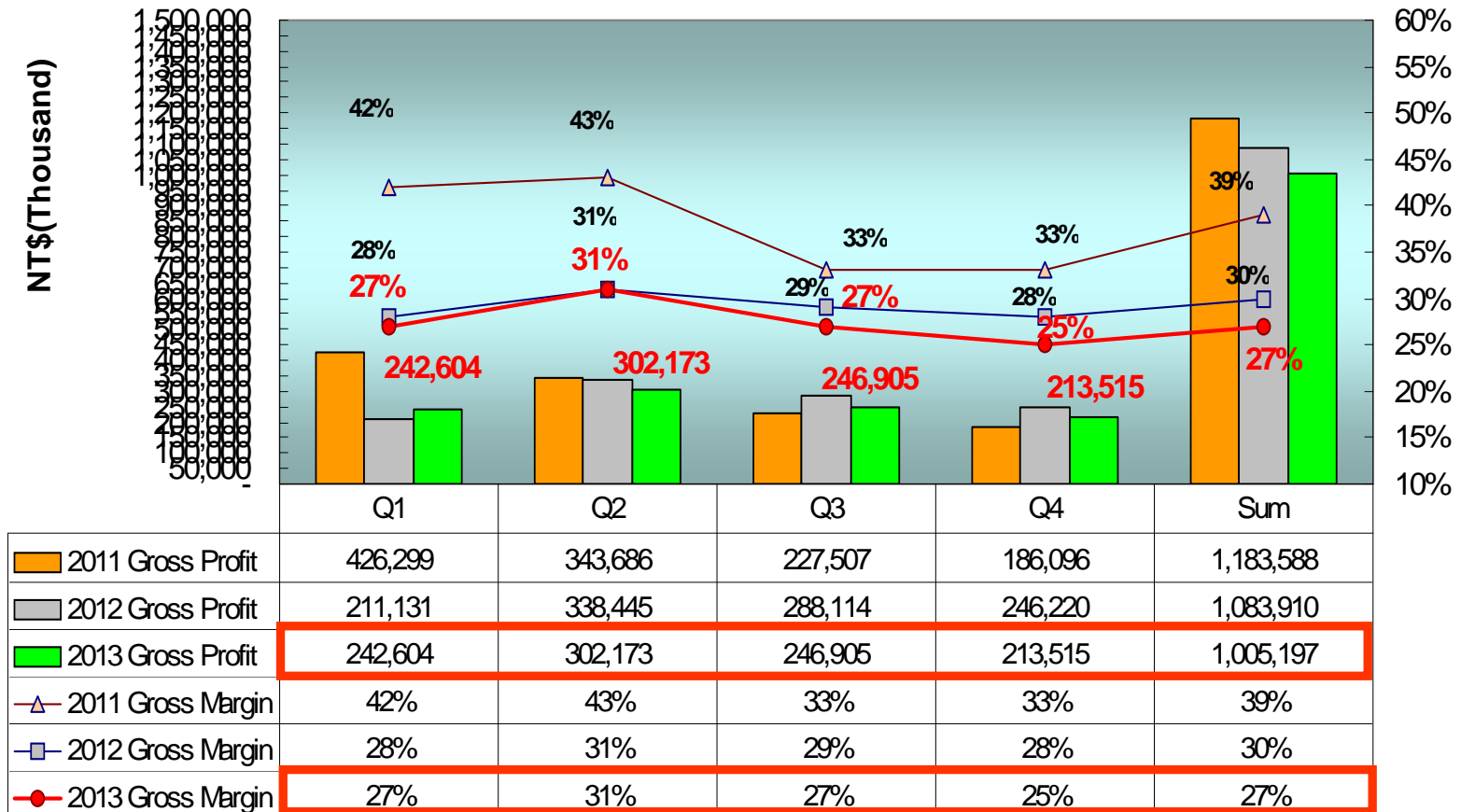
2009~2013 Combine Operating Income

Company Profile



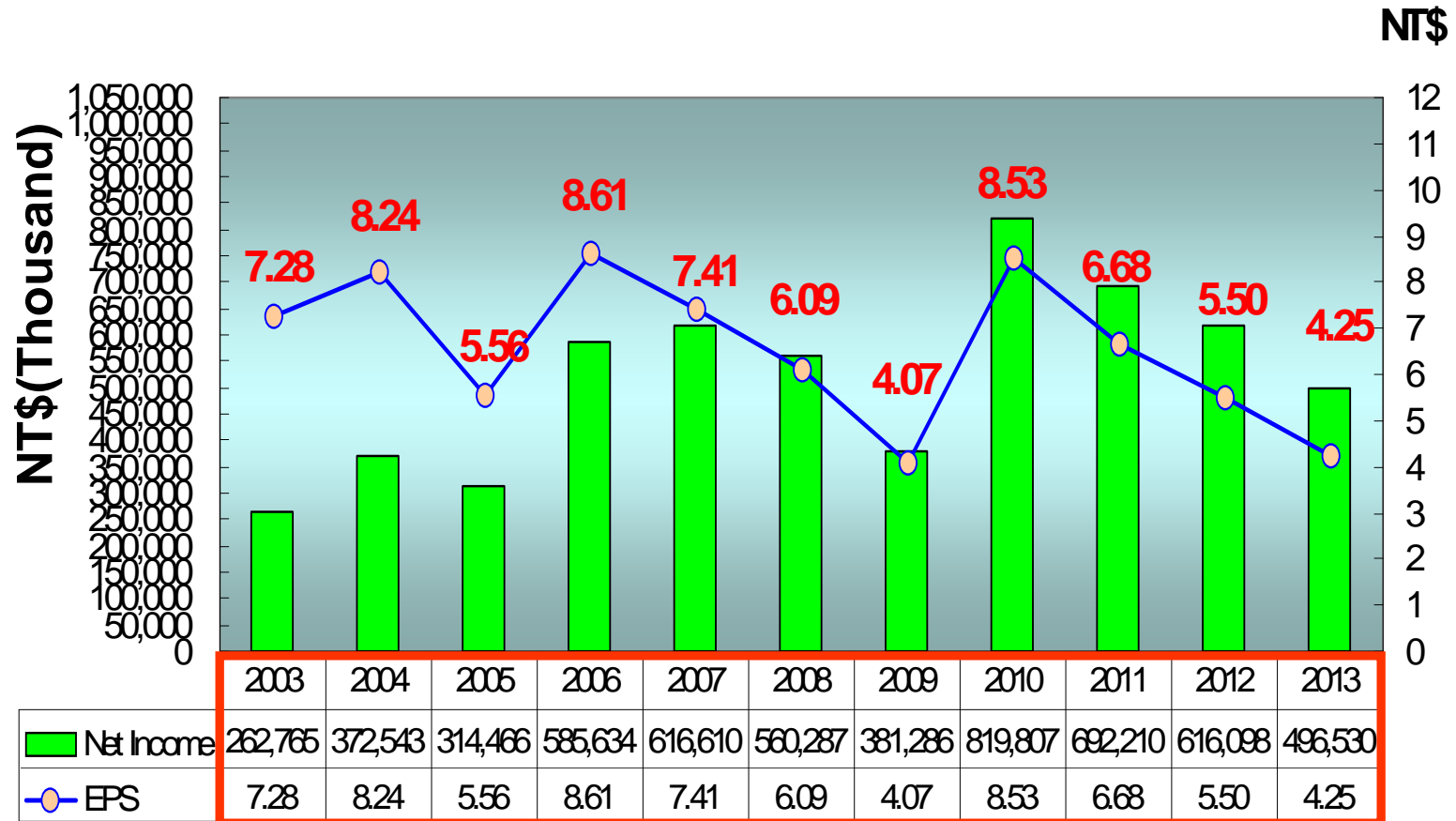
2011~2013 Combine Gross Profit

Company Profile



Yearly Net Income & EPS

Company Profile



Business Expansion Status(相關產業之狀況)

Company Profile

- **半導體及光電切挑代工服務**：進入**2014**年公司**3**月份合併營收、**MOM**成長**21.1%**、符合預期、因此將持續追蹤、另**LED**在新的應用提昇下樂觀預期在**LED**挑檢已擴充之產能 應可適時提供市場成長之需求、相信可挹助公司之營收成長。
- **IC測試系統開發**：2006年3月份與美商安捷倫(Agilent)科技(新公司名稱: Verigy惠瑞捷)簽訂IC測試系統技術合作、除了2006年已陸續支付久元簽約金而達成階段性目標、因而提昇公司營收和獲利。另已在雙方合作互動下提昇測試機技術層次及銷售量、更上層樓。
- **CIS、CCM、LED後段生產設備及AOI設備開發**：成功開發完成**CIS**(**CMOS**影像感測系統)、具備高速影像處理及完整電性測試之解決方案、並導入代工服務、挹助營收。自行開發之**CCM**(影像感測模組測試設備)、**LED**後段生產設備及**AOI**(自動光學檢測系統)等設備、因應市場需求將擴展銷售、**AOI**設備研發係以解決半導體及光電等產業在目檢之視覺盲點並可大幅節省人力、並已將光電技術結合影像分析等與自動化設備設計、成功研發出各類型外觀檢測機。**2014**年3月合併營收**MOM**成長**80%**、符合預期、將持續追蹤、相信在持續開發新產品及功能提昇下、展望未來應可持續挹助業績成長之動力。
- **半導體代工服務**：進入**2014**年3月業績**MOM**成長**34.5%**、超出預期、因此將持續追蹤、而**YTEC**在持續開發新產品與互補及平衡的產品線發酵下(如**LCD,RF..etc**)、展望未來應可持續挹助業績成長之動力。

Share payout composition and history

Company Profile

Year	96年度 (2007)	97年度 (2008)	98年度 (2009)	99年度 (2010)	100年度 (2011)	101年度 (2012)	102年度 (2013)	103年度 (2014)
	配95年度 Profit(2006)	配96年度 Profit(2007)	配97年度 Profit(2008)	配98年度 Profit(2009)	配99年度 Profit(2010)	配100年度 Profit(2011)	配101年度 Profit(2012)	配102年度 Profit(2013)
Cash(NTD)	\$4.00	\$4.00	\$3.00	\$3.00	\$4.671	\$5.238	\$4.659	\$3.700
Free Pair stock of	\$1.00	\$0.50	\$0.10	\$0.10			\$0.098	\$0.10
Stock Capital reserve fund	--	--	--	--	\$0.093	\$0.095		--
EPS(NTD)	\$8.61	\$7.41	\$6.09	\$4.07	\$8.53	\$6.68	\$5.50	\$4.25

公司願景 **Company Mission**

Company Profile

著眼於國內外市場的開拓，讓久元成為立足台灣的整合性後段IC及LED代工服務廠，並朝放眼世界的自有產品、自有品牌邁進。

Based on the domestic and international marketing development, YTEC has gotten a foothold as an integrated back-end IC&LED OEM factory. YTEC moves forward, with it's own products, and Own Bench Marks.



Q & A

Company Profile

Thank you very much



YTEC YoungTek Electronics Corp.