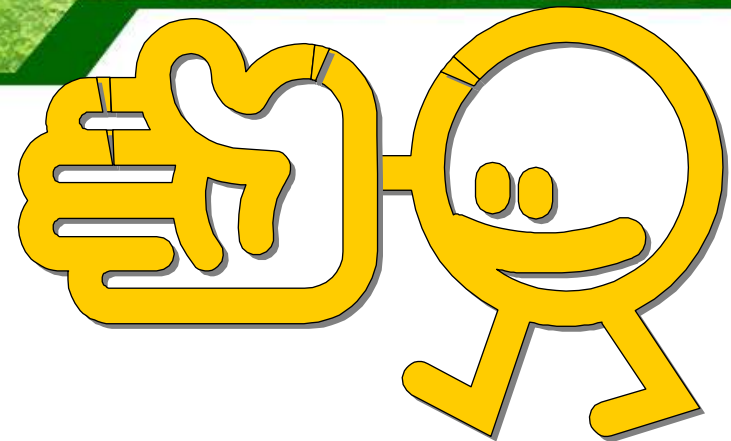


# Welcome



*Welcome*



## Brief Introduction

June 10th, 2014





# 2014 VISIT SCHEDULE @久元

*Company Profile*

## Contents

## Time

- |   |             |
|---|-------------|
| <input type="checkbox"/> Brief Introduction of YTEC | 14:00~14:20 |
| <input type="checkbox"/> Q & A                      | 14:20~15:30 |
| <input type="checkbox"/> Line Tour (Free)           | 15:30~16:00 |



# Contents

*Company Profile*

- Brief Introduction**
- Factory Overview**
- Company Milestone**
- Company Management Concept**
- OEM Services**
- R&D Roadmap and Own Product Development**
- Revenue Growth**
- Company Mission**



# Brief Introduction

*Company Profile*

**Found Time** : 1991/July

**Chairman** : Bily Wang

**President of Service Group** : Jeff Chang

**President of Own Product Group** : Glen Chen

**Employee** : 1024 persons

**Capital** : NTD 1176million (USD 39.2 million)

**Factories** : **Plant 1** : Special & substrate sawing

**SBIP Plant** : IC back-end turn-key service, ATE&AOI

**Li Hsin Plant** : LED back-end turn-key service

**An Ping Plant** : LED Testing & sorting

**Xiamen/Changzhou Plant** : LED Testing & sorting

**CRT (Shenzhen) Plant** : IC Testing & sorting

**WuJiang MightYtek Plant** : IC Assembly

**Business Items** :

1. **Semiconductor and LED OEM**: IC testing, wafer sawing, grinding, chip sorting and LED testing, laser scribing, sorting and substrate sawing.

2. **Design, manufacture and sales of semiconductor equipments**: Full-function IC tester, logic ,analog, Mixed-Signal IC Tester , LED tester, prober and sorter, CCM equipments, AOI system.





# Factory Overview

Company Profile

Plant #1



SBIP Plant



Li-Hsin Plant



Hsinchu

Tainan

An-Ping Plant



YoungTek Electronics Corp.

# Factory Overview

Company Profile

Changzhou YT Plant



WuJiang MightYtek Plant



Xiamen YT Plant



CRT (Shenzhen) Plant



YoungTek Electronics Corp.



# Company Milestone

Company Profile

- 1991/Jul. YTEC was founded and the capital is NTD \$ 5 million.
- 1998/Oct. Develop logic tester (Goblin) with 5 MHz/40 pins.
- 2000/Mar. Achieved the certification of ISO 9001
- 2000/Jul. Full-function IC tester was verified by industry agency with predominant product development project.
- 2002/Nov. SEC (Securities and Exchange Commission) approve YTEC to public stock.
- 2003/Nov. LED OEM service was established.
- 2003/Dec. Obtain OTC certification.
- 2004/Mar. Got the approval to establish the branch in Hsin chu SBIP.
- 2004/Mar.29 Listed in Taiwan stock exchange. (Stock No.: 6261)
- 2006/Mar. Signs the cooperation agreement of the IC test system technology. with Agilent Technologies
- 2006/Dec. Achieved the certification of ISO 14001 and OHSAS 18001.
- 2007/Jul. Develop Tainan An Ping plant for LED sorting.
- 2008/May. Develop Li Hsin plant for LED test & sorting.
- 2008/Oct. Achieved the certification of ISO/TS 16949.
- 2009/May. To establish the Xiamen Young Tek Electronics Co., Ltd. to provide the LED Backend Turn-key service.
- 2009/Jun. Solar silicon substrate inspection system was verified Science Park Administration with development project.
- 2010/Mar. Develop SBIP plant for wafer grinding & sawing.
- 2010/Sep. To establish the Changzhou YoungTek Electronics Co., Ltd. to provide the LED Backend Turn-key service.
- 2011/Jan. Achieved the certification of IECQ QC080000.
- 2011/Dec. To establish the WuJiang MightYtek Semiconductor Co., Ltd. to provide the Semiconductor Backend Testing & Ass'y Turn-key service.
- 2012/Feb. To establish the Shenzhen Clear Rich Tech. Co., Ltd. to provide the Semiconductor Backend Testing service.
- 2012/May. Signs the cooperation memorandum, the expansion related marketing functions Development with Yoshikawa Semiconductor Co., Ltd.
- 2013.Dec. Achieved the 14th Industrial Excellence Award by Industry Agency .



YoungTek Electronics Corp.



# Company Management Concept

Company Profile

## 經營理念：(Management Concept)

主人翁經營理念；下工程即是客戶。

Treat YTEC as your own company. (Host concept)

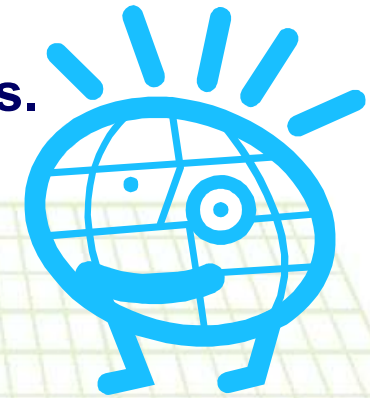
Treat all post projects and processes as our customers.

## 工作態度：(Working Attitude)

成功者找方法；失敗者找藉口。

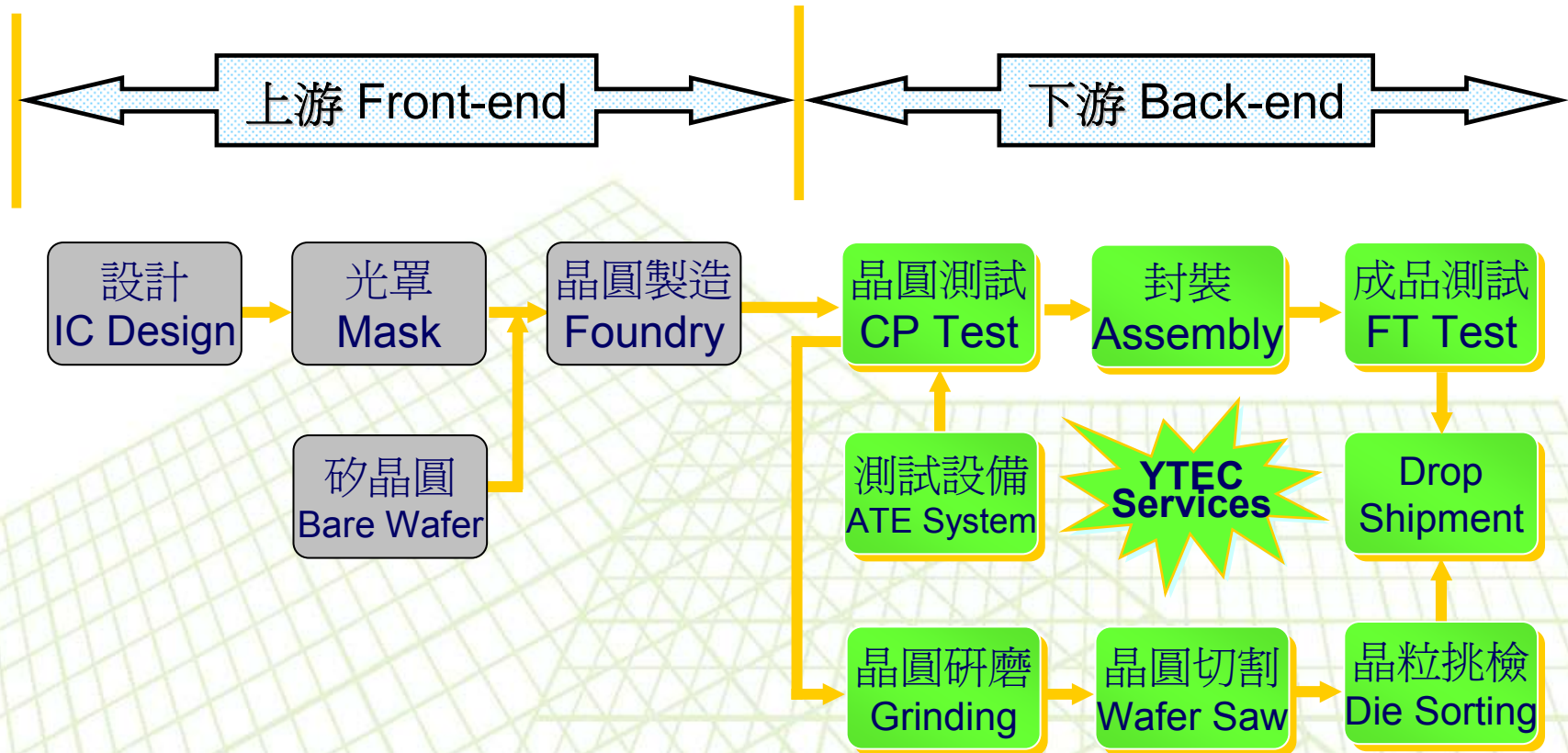
A successful person will find the way to overcome a challenge

Loser finds excuses.



# IC OEM Services

Company Profile





# 專業測試代工服務(IC Testing OEM)

*Company Profile*

- ❑ **4"~12" Wafer testing (CP)**、**Test program and test kit development** (Probe-card design and manufacture).
- ❑ **IC packaging testing (FT)**、Package type : DIPs、T/SOPs、L/QFPs、QFN、L/BGA...
- ❑ **PC peripheral product、Logic、Analog、Mixed-signal**、No-volatile memory、MCU、**LCD driver IC**、High speed/ High pin count (Scud-1A 512C) testing.  
**CIS**(CMOS Image Sensor)、RF、SoC product testing
- ❑ Others : Laser trimming、Lead scanning、Test program and test kit development technical support **Turn-key service** (For example: PKG assembly、Tape-reel、Drop-shipment...).



**YTEC** YoungTek Electronics Corp.

# 研磨、切割及挑檢代工服務 (Grinding, Sawing, P&P Service)

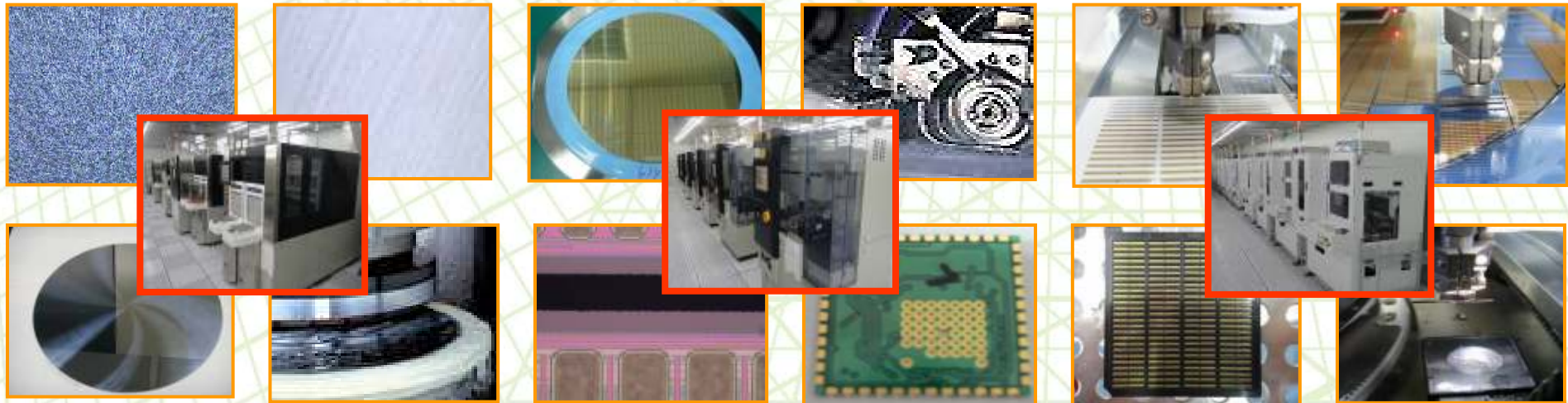
Company Profile

## ❑ IC Grinding、Sawing、Pick & Place

- 4"~12" Wafer back-side grinding、sawing、chip pick & place services for Consumer and gold bump COG products。
- Pick & Place Chip Back-side AOI inspection System inside。

## ❑ Substrate Sawing

- LED package substrate、Glass substrate、Ceramic Substrate、Ceramic+FR4、Lead-frame、QFN package、HTCC、LTCC、PCB。

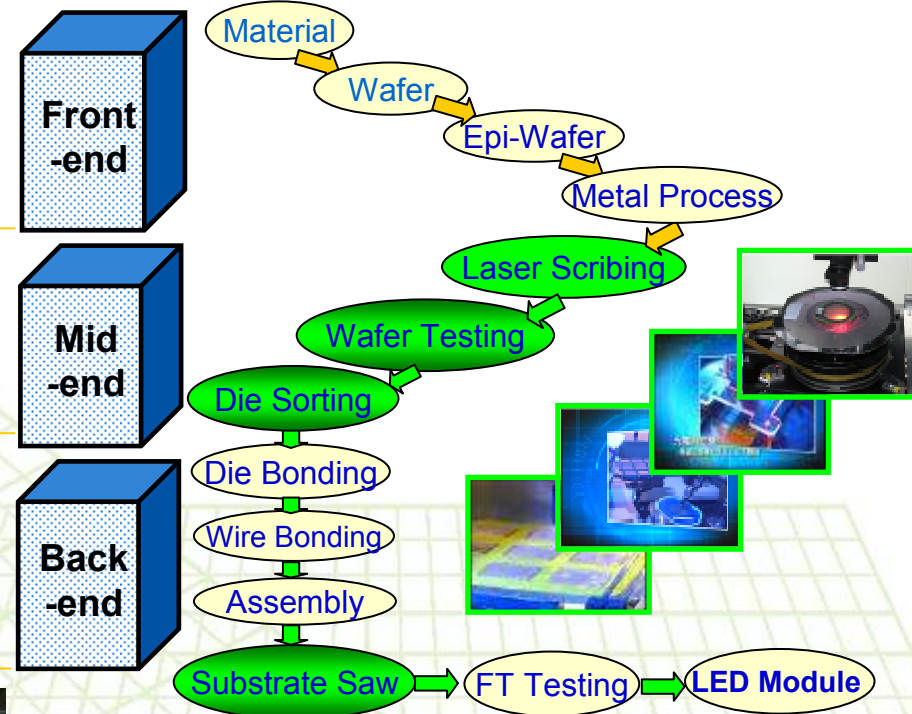


YoungTek Electronics Corp.



# LED OEM Services

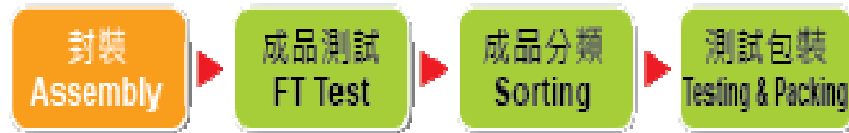
Company Profile



- **Front-end Product** : Wafer · Epi-Wafer , For example GaAs · GaAsP · AlGaAs · AlGaInP
- **Mid-end Product** : Laser Scribing · Wafer Testing and Pick & Place Die-sorting
- **Back-end Product** : Lamp · Display · SMD · IR transmission module · Optical Communication product · Substrate Saw

# IC Testing Application Equipment

Company Profile



**YT5100**

全功能高速SoC IC  
測試機

**Scud-1A**



**YT6100**

Fat Type  
IC測試分類機



**YT6200**

QFN測試包裝機



YoungTek Electronics Corp.



# YT5100 & Scud-1A IC Tester

*Company Profile*

*YT5100 High Speed Soc IC Tester*

*Scud-1A Fully Auto IC Tester*



*YoungTek Electronics Corp.*

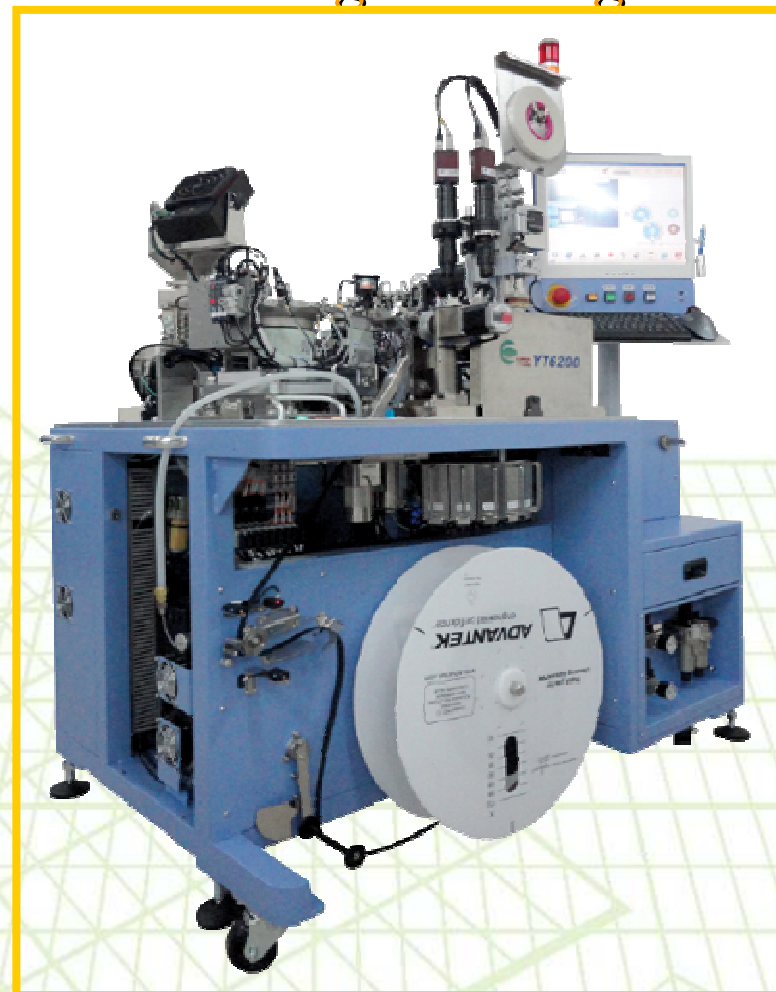
# YT6110 IC Handler / YT6200 QFN Testing & Packing

*Company Profile*

*YT6110 IC Handler*



*YT6200 QFN  
Testing & Packing*



*YoungTek Electronics Corp.*



# 影像感測模組測試設備 CCM(CMOS/Compact Camera Module)

Company Profile

影像感測模組測試設備

CCM YT3100



全自動影像感測模組測試設備

CCM YT3300



YoungTek Electronics Corp.

# YT1100 LED Tester(YT1100 LED 測試機)

Company Profile

□ YTSD01 → YTSD02 → YT1000 HV LED Tester(8000V ESD)  
→ YT1100 HV LED Tester (Multi-station)



YoungTek Electronics Corp.



# DB-260 LED Prober

Company Profile

## PB-260 LED Prober

### PB-260 LED 晶粒檢測機 LED Chip Probe Station



自動換探針功能  
針痕監控系統  
晶粒外觀辨識功能



■ 鏡分球狀光高度6mm



■ 複合式吸光系統

**WECON**  
威控自動化  
www.wecon.com.tw

### PB-260

#### 特色：

- 自動換探針功能 **NEW**
- 針痕監控系統 **NEW**
- 探針高度檢知 **NEW**
- 雙面、晶片、PAD、粗化辨識系統
- 鏡分球狀光高度6mm
- 自動設定起始點(Auto Alignment key Search)
- 簡易的操作畫面
- Z軸採用直立式螺桿高速傳動動作系統穩定
- 可依客戶需求，同時安裝鏡分球狀顯微鏡或光系統
- 鏡分球狀固定座採用三軸精密調整平台
- 探針座使用快拆式底座，探針維護便利
- 可供客戶高選擇配專電或不專電平台

#### 雙面、鏡角、PAD、粗化辨識



■ 綠色表示辨識為不良品粒 ■ 灰色表示辨識為正常品粒

#### Index Time Table :

Z軸上升高度 (mm)	time (msec)	晶粒間距(mm)			
		6	12	20	40
6	73	79	86	100	
8	75	81	88	102	
12	85	90	97	111	
14	90	95	102	116	

#### 規格(Specification)

Chip 直徑	1.58mm to 1.61mm	晶粒間距	±.10"
Wiper 直徑	Φ1.5MM	晶粒種類	±.10"
X-Y 軸行程	210mm x 470mm	Z軸行程	520mm
X-Y 軸解像度	1 μm	分辨率	0.001"
X-Y 軸構造	±.18 μm (Max with 0.01)	■ 最大重量	450g
Z軸行程	100mm	重量	450kg
Z軸解像度	1 μm	正面負重	4.0 kg/cm <sup>2</sup> / 48 MPa
Z軸構造	2.4 μm	電壓	標準220V / 110V, 80Hz, 5A
Communication Interface	標準1公尺	TTL, RS232	
		Width : 1100mm, Depth : 810mm, Height : 1800mm	
		Drawer and knee 1.8M	

規格如有變更，恕不另行通知。

威控自動化機械股份有限公司  
WECON AUTOMATION CORP.

新竹市埔頂路99巷127號  
No.127, Alley 99, Putin Rd., Hsinchu City, Taiwan  
TEL:886-3-5734757 FAX:886-3-5734760

www.wecon.com.tw

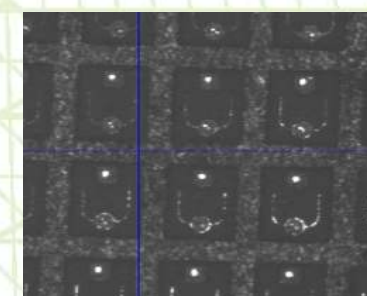
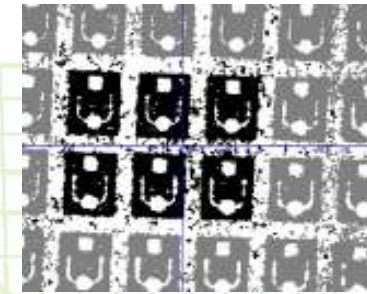
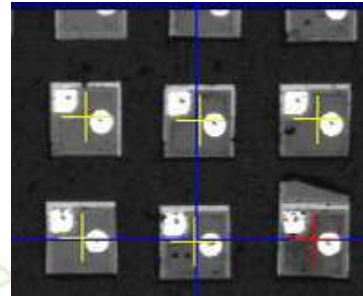


YoungTek Electronics Corp.

# LS-360 LED Sorter

Company Profile

## LS-360 LED Sorter





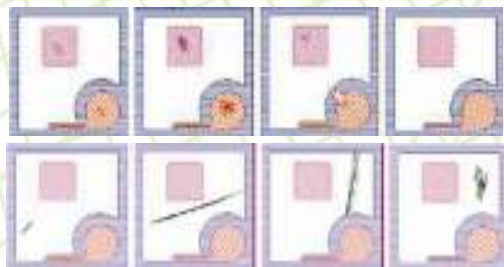
# 自動光學檢測系統 (Auto Optical Inspection)

Company Profile

**YT 5311 LED Chip/Wafer/Mask**  
半自動光學檢測系統



**YT 2800 LED Chip/Wafer/Mask**  
全自動光學檢測系統



YoungTek Electronics Corp.

# 自動光學檢測應用(AOI Application)

Company Profile

被動元件、LED  
產品六面外觀檢測



**YT2300**

元件六面外觀  
檢測機

**YT2330**

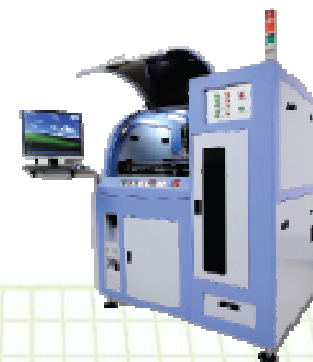
雙軌元件六面外觀  
檢測機

LED及被動元件散熱基板  
產品之外觀檢測



**YT2700**

LED及被動元件  
散熱基板之2D AOI  
檢測機



**YT2705**

LED及被動元件  
散熱基板之2D AOI  
檢測機  
(Auto Load/Unload)



YoungTek Electronics Corp.



# 自動光學檢測系統 (Auto Optical Inspection)

Company Profile

YT 2300(YT2330) Component AOI

自動光學檢測系統(雙軌)



## Reel type taped products:

- Resistor
- Capacitor
- Inductor
- LED
- IC
- Relay
- Connector
- Fuse



# LED Assembly Application Equipment

Company Profile



YoungTek Electronics Corp.



# DB-159 Die Bonder & YT2500 LED Dispenser

Company Profile

## DB-159 Die Bonder

## YT2500 LED Dispenser

DB-159 泛用型高速固晶机  
High Speed Multiple Applications Epoxy Die Bonder

UPH **15K**  
Cyc. Time 230ms



超宽工作行程: 120 x 280mm  
顶针自动调高、防撞设计  
多种制程选择  
开放式参数设定

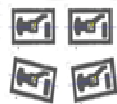
**WECON**  
威控自动化

www.wecon.com.tw

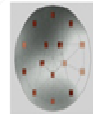
DB-159

### 多制程选择

- 个别产品角度识别功能(图1)
- CAD程式输入档案功能(图2)
- 多晶磊功能(图3)
- 拾取点检测功能(图4)
- 多图叠层导晶功能



(图1)



(图2)



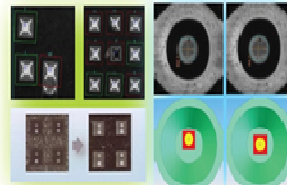
(图3)



(图4)

### 影像辨识系统 (图5)

- 可自行外观检测标准:  
异物、PAD污染检查、异物、破裂、发源区污染检查
- 具有缺晶、掉晶检查功能
- 晶化晶粒可正确判断
- 晶磊位置设定能以方形Che或圆形杯底显示, 以提高设定精度 (图6)
- 晶磊拾取修正功能



(图5)

### 规格(Specification)

整体性能	UPH 15K (120x120mm标准, 可选270x120mm)	影像辨识系统 CCD-Resolution	256 Gray level 1024x768 pixel
Bonding accuracy	X/Y: ±1.5μm (±1.2μm)	测力精度	0.1μg
Bonding speed	Max. 1000 cycles/min	拾取平均速度	6000cpm
晶片尺寸范围	晶片尺寸范围	Dimension	1.31100 ± 0.002 ± 100-4 μm
Water Ring Size	6" (Max)	环境温度	AC220V / AA(Normal, 10A/Phase) / 2200W
Whirling Range	φ170mm (L.P.)	Pneumatic source	5 kg/cm <sup>2</sup>
Die size	6mm ~ 80mm (45mm以上需加吸盘)	Vacuum	0.8kg/cm <sup>2</sup> (Sublim. Vac. Pump)
工作行程	Length: 117" (2969mm)		
Width	41" (1041mm)		
产品厚度范围	Height: 0.5mm		
最低吸盘规格	Assist CCD = 1.7" XCD X12.4μm Stage		

规格如有变更, 恕不另行通知

威控自动化机械股份有限公司  
WECON AUTOMATION Corp.

台湾新竹市福国路14号12楼  
No.127, Alley 95, Plain Rd, Hsinchu City, Taiwan  
TEL:886-3-5734757 IFAX:886-3-5734760

www.wecon.com.tw



YoungTek Electronics Corp.

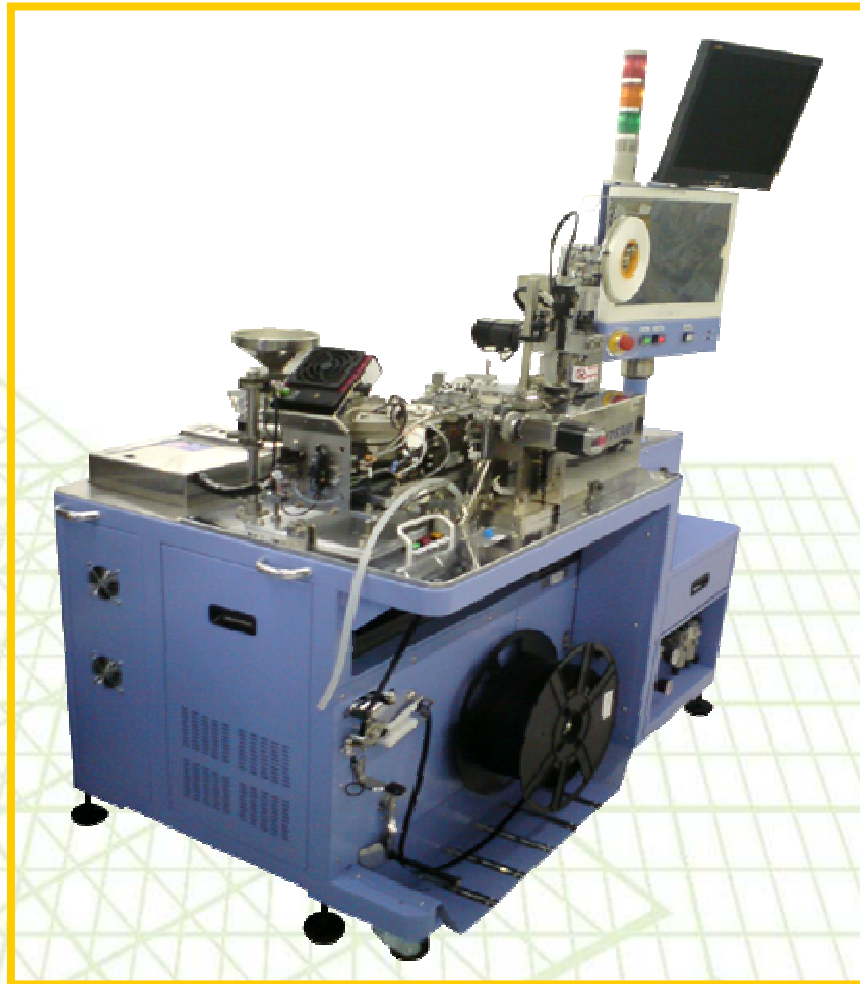
# YT6400 LED Handler & YT6300 LED Tapping

*Company Profile*

*YT6400 LED Handler*



*YT6300 LED Tapping*



*YoungTek Electronics Corp.*

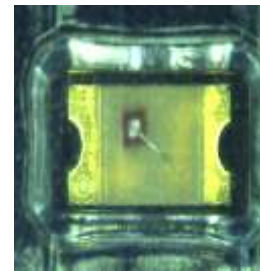


# 自動光學檢測系統 (Auto Optical Inspection)

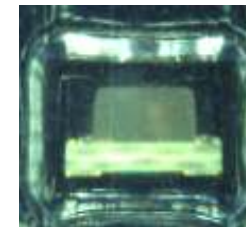
*Company Profile*

## YT 2210 Reel Type Components

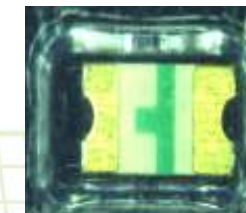
自動光學檢測系統



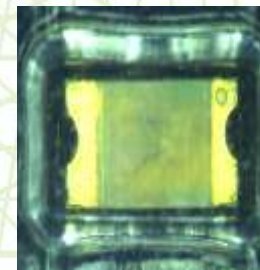
Polarity inverse package



Tilt



Over turn



Mixed package



Empty



**YTEC** YoungTek Electronics Corp.

# Revenue Growth





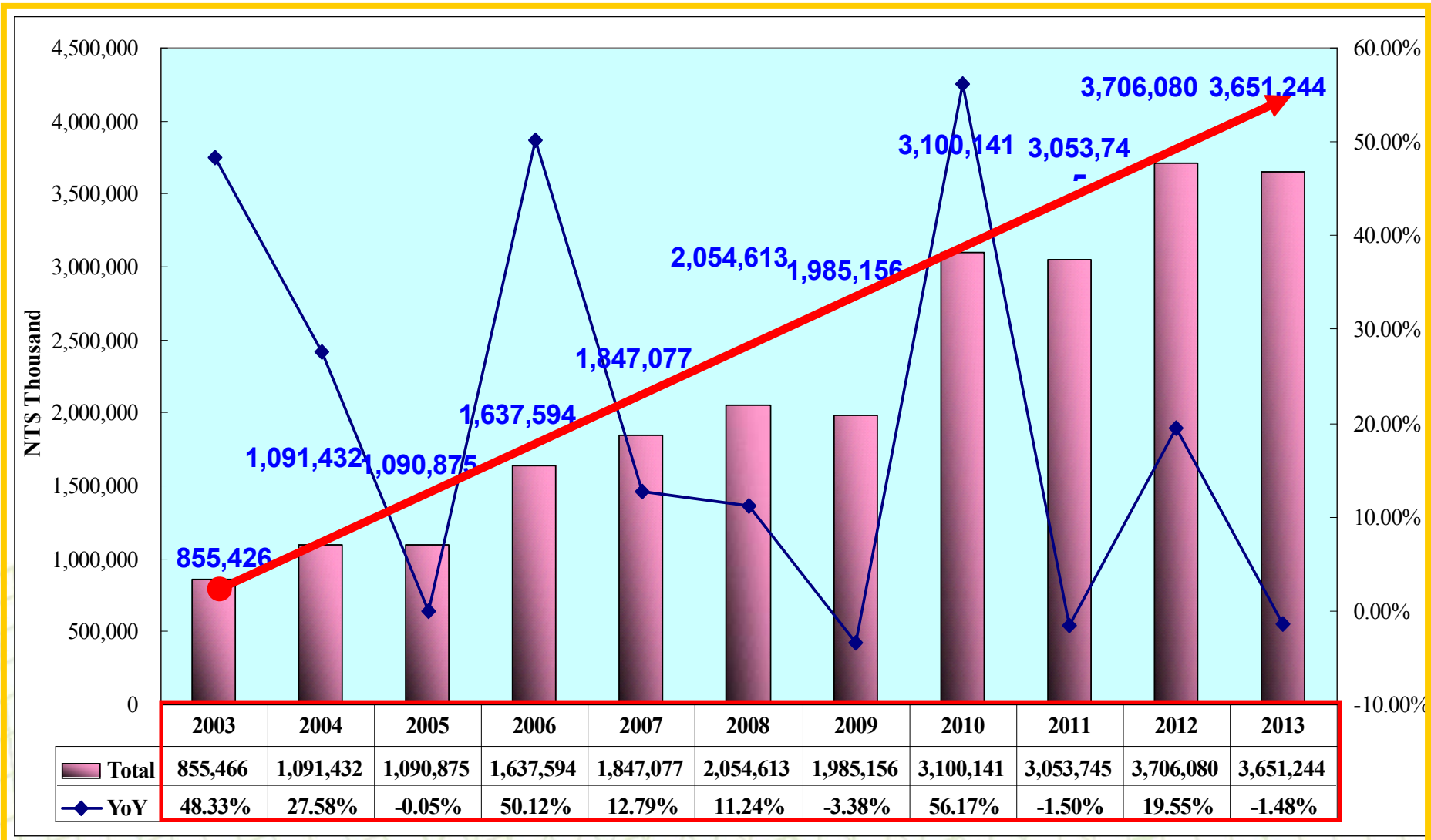
# 2013&2014 Combine Monthly Revenue

Company Profile  
NT\$(Thousand)

Business Item/Month	Jan.	Feb	Mar	Apr	May	Jun.	Jul.	Aug.	Sep	Oct.	Nov.	Dec.	Total	Share(%)	
切割挑檢代工 Sawing & Sorting OEM	2013	103,440	89,967	111,738	111,642	104,798	108,814	112,497	113,890	115,743	108,104	103,347	105,030	521,585	32.89%
	2014	100,469	100,920	122,235	121,431	143,418								588,473	37.37%
	YoY	-2.87%	12.17%	9.39%	8.77%	36.85%								12.82%	
	MoM	-4.34%	0.45%	21.12%	-0.66%	18.11%									
測試代工 Testing OEM	2013	169,597	137,091	159,963	185,757	174,540	148,299	167,030	156,156	158,739	150,852	140,718	189,991	826,948	52.15%
	2014	130,233	125,498	168,748	165,316	169,658								759,453	48.23%
	YoY	-23.21%	-8.46%	5.49%	-11.00%	-2.80%								-8.16%	
	MoM	-31.45%	-3.64%	34.46%	-2.03%	2.63%									
機器組裝等產品銷售 Own Product Sales	2013	23,543	42,490	62,096	58,475	50,678	45,760	38,273	21,051	30,352	34,939	4,449	11,395	237,282	14.96%
	2014	5,630	37,431	67,395	43,887	72,346								226,689	14.40%
	YoY	-76.09%	-11.91%	8.53%	-24.95%	42.76%								-4.46%	
	MoM	-50.59%	564.85%	80.05%	-34.88%	64.85%									
營業收入淨額 (Unit: K) Sales Revenue (Net)	2013	296,580	269,548	333,797	355,874	330,016	302,873	317,800	291,097	304,834	293,895	248,514	306,416	1,585,815	100.0%
	2014	236,332	263,849	358,378	330,634	385,422								1,574,615	100.0%
	YoY	-20.31%	-2.11%	7.36%	-7.09%	16.79%								-0.71%	
	MoM	-22.87%	11.64%	35.83%	-7.74%	16.57%									
營業收入淨額(系 計) Sales Revenue (Total)	2013	296,580	566,128	899,925	1,255,799	1,585,815	1,888,688	2,206,488	2,201,005	2,802,419	3,096,314	3,344,828	3,651,244	--	--
	2014	236,332	500,181	858,559	1,189,193	1,574,615									
	YoY	-20.31%	-11.65%	-4.60%	-5.30%	-0.71%									
總計代工成長 OEM Growth (Total)	2013	273,037	227,058	271,701	297,399	279,338	257,113	279,527	270,046	274,482	258,956	244,065	295,021	1,348,533	--
	2014	230,702	226,418	290,983	286,747	313,076								1,347,926	
	YoY	-15.51%	-0.28%	7.10%	-3.58%	12.08%								-0.05%	
	MoM	-21.80%	-1.86%	28.52%	-1.46%	9.18%									

# 2003~2013 Combine Revenue Growth

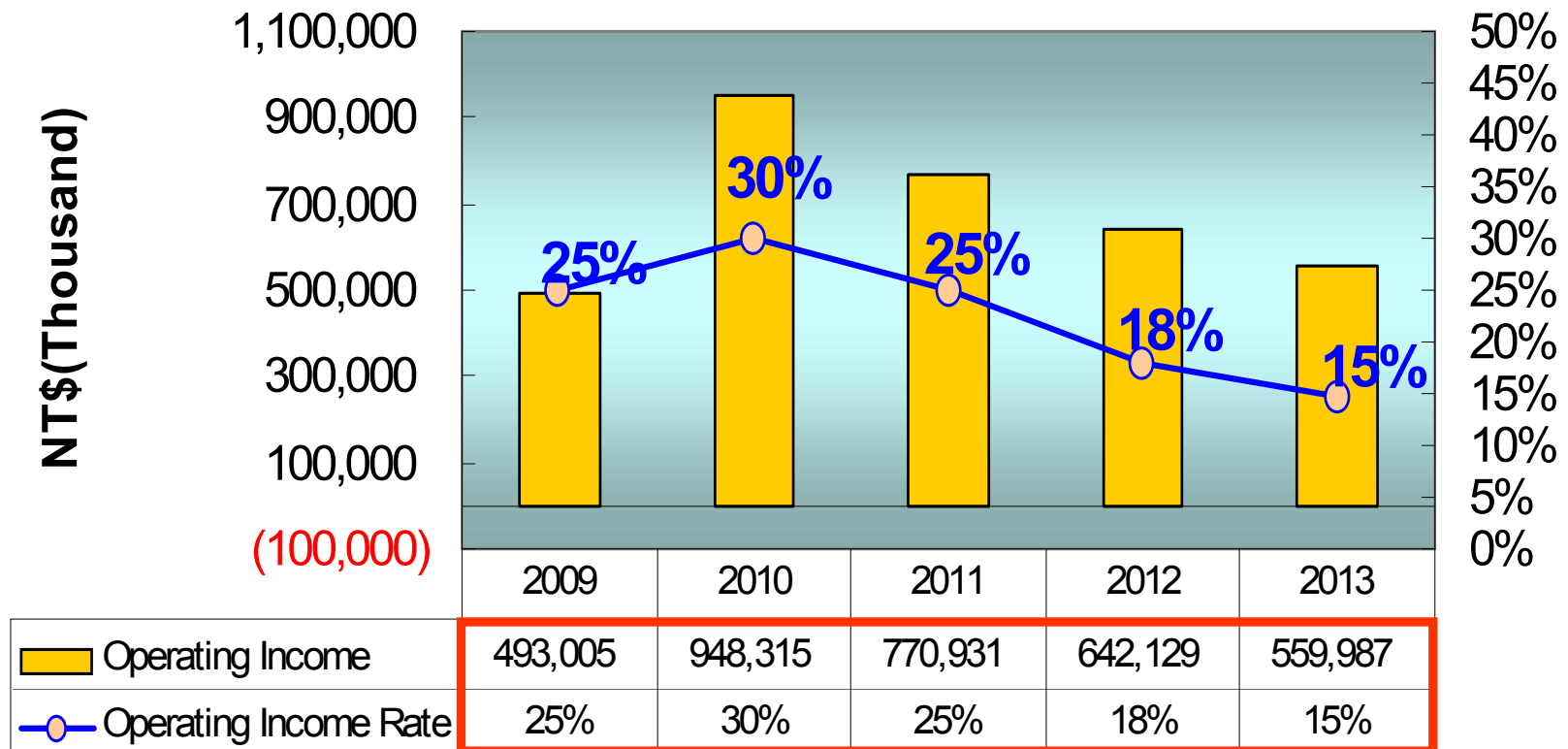
Company Profile





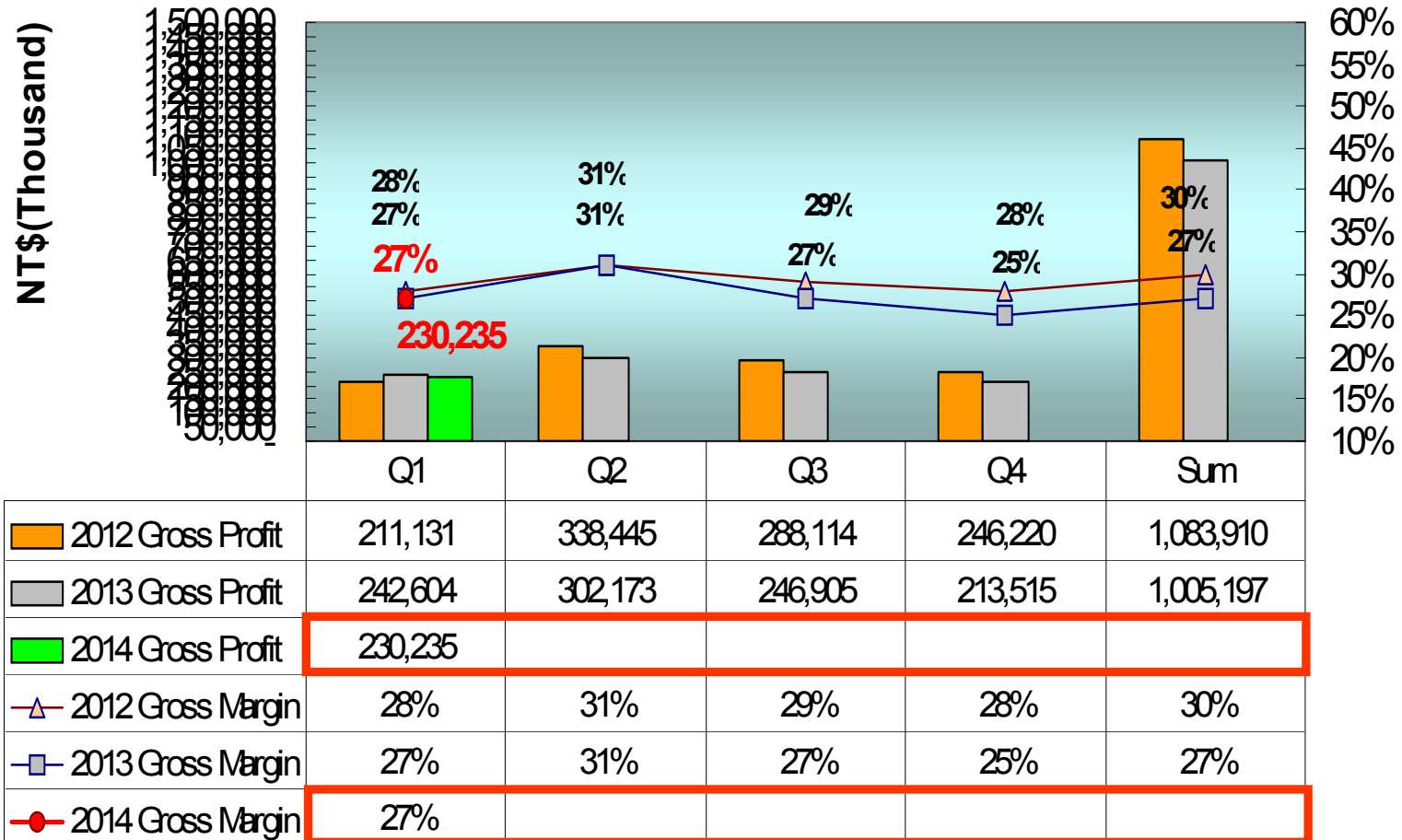
# 2009~2013 Combine Operating Income

Company Profile



# 2012~2014 Combine Gross Profit

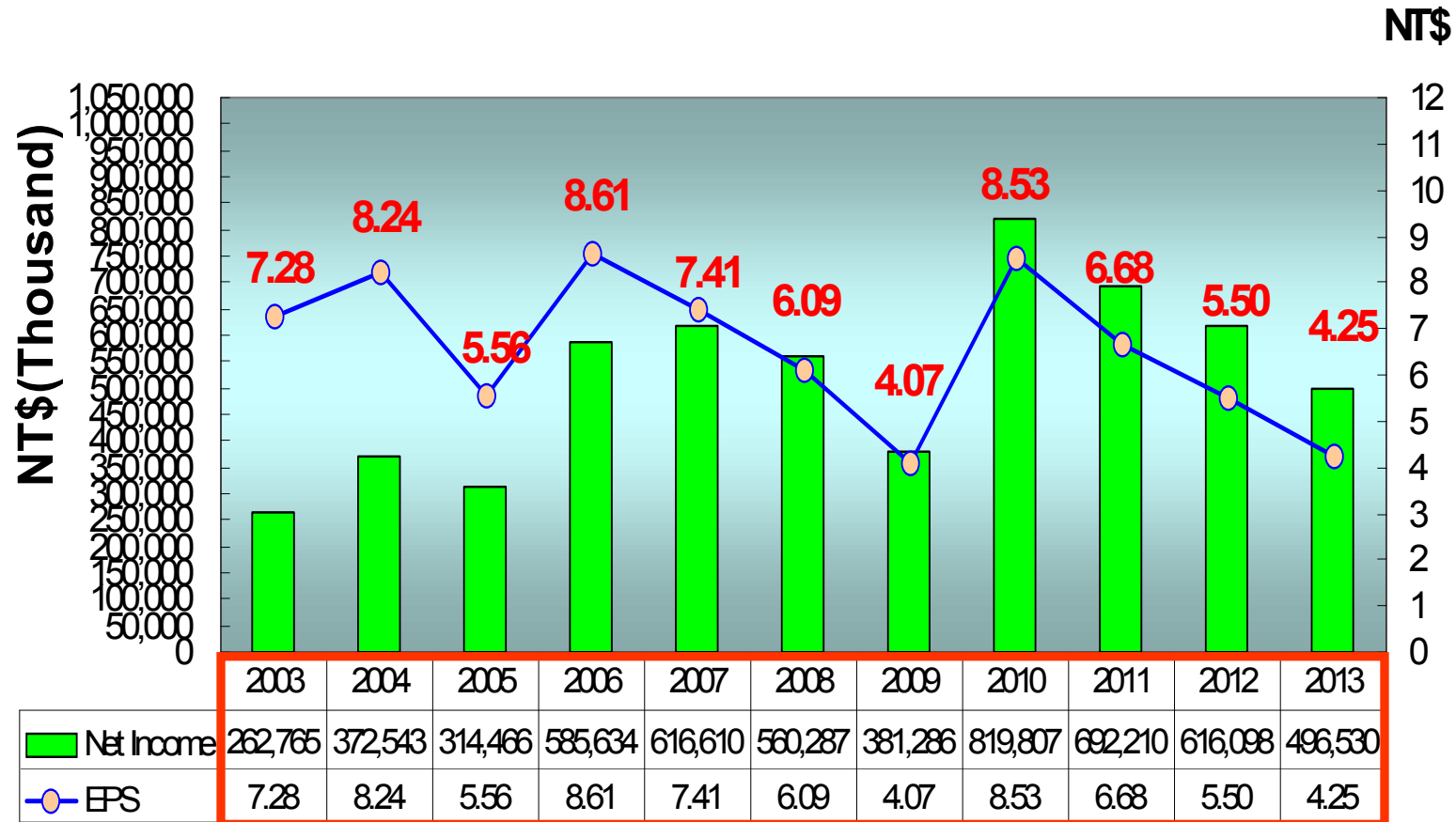
Company Profile





# Yearly Net Income & EPS

Company Profile



YoungTek Electronics Corp.

# Business Expansion Status(相關產業之狀況)

## Company Profile

- **半導體及光電切挑代工服務**：進入**2014**年公司**5**月份合併營收、**YOY**成長**36.9%**、**MOM**成長**18.1%**、創歷史新高、符合預期、因此將持續追蹤、另**LED**在新的應用提昇下樂觀預期在**LED**挑檢已擴充之產能 應可適時提供市場成長之需求、相信可挹助公司之營收成長。
- **IC測試系統及QFN測試包裝機、分類機開發**：成功的開發完成**100MHZ 512/768 pins**全功能**IC**測試機、針對多媒體、**Digital TV**及高速邏輯**SOC**產品並行測試、並導入量產、更高階機種亦將陸續上市、另研發出**QFN**測試包裝機及分類機、可應用於**IC**成品測試生產、更具備三合一功能(測試、外觀檢測及包裝)、以提昇**IC**測試代工服務之競爭優勢。
- **CIS、CCM、LED後段生產設備及AOI設備開發**：成功開發完成**CIS**(**CMOS**影像感測系統)、具備高速影像處理及完整電性測試之解決方案、並導入代工服務、挹助營收。自行開發之**CCM**(影像感測模組測試設備)、**LED**後段生產設備及**AOI**(自動光學檢測系統)等設備、因應市場需求將擴展銷售、**AOI**設備研發係以解決半導體及光電等產業在目檢之視覺盲點並可大幅節省人力、並已將光電技術結合影像分析等與自動化設備設計、成功研發出各類型外觀檢測機。**2014**年**5**月合併營收**YOY**成長**42.8%**、**MOM**成長**64.9%**、為去年以來之新高、符合預期、將持續追蹤、相信在持續開發新產品及功能提昇下、展望未來應可持續挹助業績成長之動力。
- **半導體代工服務**：進入**2014**年**5**月業績**MOM**成長**2.6%**、符合預期、因此將持續追蹤、而**YTEC**在持續開發新產品與互補及平衡的產品線發酵下(如**LCD,RF..etc**)、展望未來應可持續挹助業績成長之動力。





# Share payout composition and history

Company Profile

Year	96年度 (2007)	97年度 (2008)	98年度 (2009)	99年度 (2010)	100年度 (2011)	101年度 (2012)	102年度 (2013)	103年度 (2014)
	配95年度 Profit(2006)	配96年度 Profit(2007)	配97年度 Profit(2008)	配98年度 Profit(2009)	配99年度 Profit(2010)	配100年度 Profit(2011)	配101年度 Profit(2012)	配102年度 Profit(2013)
Cash(NTD)	\$4.00	\$4.00	\$3.00	\$3.00	\$4.671	\$5.238	\$4.659	\$3.700
Free Pair stock of	\$1.00	\$0.50	\$0.10	\$0.10			\$0.098	\$0.10
Stock Capital reserve fund	--	--	--	--	\$0.093	\$0.095		--
EPS(NTD)	\$8.61	\$7.41	\$6.09	\$4.07	\$8.53	\$6.68	\$5.50	\$4.25

# 公司願景 **Company Mission**

*Company Profile*

著眼於國內外市場的開拓，讓久元成爲立足台灣的整合性後段IC及LED代工服務廠，並朝放眼世界的自有產品、自有品牌邁進。

Based on the domestic and international marketing development, YTEC has gotten a foothold as an integrated back-end IC&LED OEM factory. YTEC moves forward, with it's own products, and Own Bench Marks.



*YoungTek Electronics Corp.*



Q & A

*Company Profile*

Thank you very much



*YoungTek Electronics Corp.*