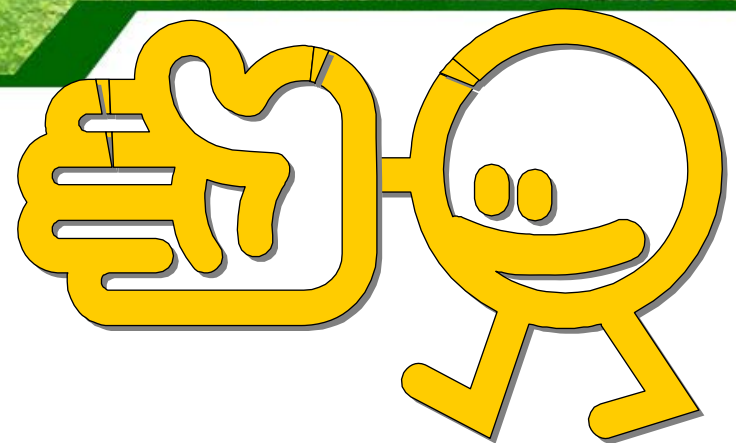


Welcome 久元電子股份有限公司



Welcome



Brief Introduction

May 16th, 2017



法人座談會時間表 @久元

Company Profile

<u>Content</u>	<u>In-Chart</u>	<u>Time</u>
□ 歡迎法人蒞臨久元電子	劉復煌	14:00~14:10
□ 久元電子簡介及業績說明	劉復煌	14:10~14:30
□ 公司近況及未來展望說明	劉復煌	14:30~14:50
□ 面對面互動Q & A時間	蕭協理/劉復煌	14:50~15:30
□ 工廠參觀(採自由參加)	劉復煌	15:30~16:00

Contents

Company Profile

- Brief Introduction**
- Factory Overview**
- Company Milestone**
- Company Management Concept**
- OEM Services**
- R&D Roadmap and Own Product Development**
- Revenue Growth**
- Company Mission**



Brief Introduction

Company Profile

Found Time : 1991/July

Chairman : Bily Wang

CEO : Robbins Yeh

Employee : 1102 persons

Capital : NTD 1285million (USD 42 million)

Factories :

- Plant 1 :** Special & substrate sawing
- SBIP Plant :** IC Back-end turn-key service, ATE&AOI
- Chuangsing Plant :** IC Final Testing service
- Li Hsin Plant :** LED Back-end turn-key service
- An Ping Plant :** LED Testing & sorting
- Xiamen Plant :** LED Testing & sorting
- Changzhou Plant :** LED Testing & sorting
- Wujiang MightYtek Plant :** IC Assembly & Testing

Business Items :

1.Semiconductor and LED OEM: IC testing, wafer sawing, grinding, chip sorting and LED testing, laser scribing, sorting and substrate sawing.

2.Design, manufacture and sales of semiconductor equipments: Full-function IC tester, logic, analog, Mixed-Signal IC Tester, LED tester, prober and sorter, CCM equipments, AOI system.



Factory Overview

Company Profile

Plant #1



SBIP Plant



Li-Hsin Plant



Chuangsin Plant



An-Ping Plant



Hsinchu

Tainan



YoungTek Electronics Corp.

Factory Overview

Company Profile

Changzhou YT Plant



Wujiang MightYtek Plant



Xiamen YT Plant



YoungTek Electronics Corp.

Company Milestone

Company Profile

- 1991/Jul. YTEC was founded and the capital is NTD \$ 5 million.
- 1998/Oct. Develop logic tester (Goblin) with 5 MHz/40 pins.
- 2000/Mar. Achieved the certification of ISO 9001
- 2000/Jul. Full-function IC tester was verified by Industry Agency with predominant product development project.
- 2002/Nov. SEC (Securities and Exchange Commission) approve YTEC to public stock.
- 2003/Nov. LED OEM service was established.
- 2004/Mar. Got the approval to establish the branch in Hsin chu SBIP.
- 2004/Mar.29 Listed in Taiwan stock exchange. (Stock No.: 6261)
- 2006/Mar. Signs the cooperation agreement of the IC test system technology. with Agilent Technologies
- 2006/Dec. Achieved the certification of ISO 14001 and OHSAS 18001.
- 2007/Jul. Develop Tainan An Ping plant for LED sorting.
- 2008/May. Develop Li Hsin plant for LED test & sorting.
- 2008/Oct. Achieved the certification of ISO/TS 16949.
- 2009/May. To establish the Xiamen Young Tek Electronics Co., Ltd. to provide the LED Backend Turn-key service.
- 2009/Jun. Solar silicon substrate inspection system was verified Science Park Administration with development project.
- 2010/Mar. Develop SBIP plant for wafer grinding & sawing.
- 2010/Sep. To establish the Changzhou YoungTek Electronics Co., Ltd. to provide the LED Backend Turn-key service.
- 2011/Jan. Achieved the certification of IECQ QC080000.
- 2011/Dec. To establish the WuJiang MightYtek Semiconductor Co., Ltd. to provide the Semiconductor Backend Testing & Ass'y Turn-key service.
- 2012/Feb. To establish the Shenzhen Clear Rich Tech. Co., Ltd. to provide the Semiconductor Backend Testing service.
- 2012/May. Signs the cooperation memorandum, the expansion related marketing functions Development with Yoshikawa Semiconductor Co., Ltd.
- 2013.Dec. Got the 14th Industrial Excellence Award by Ministry of Economic Industry Agency .
- 2015.May. Development of innovative measuring technique and system for critical dimension inspection on through silicon vias was verified Science Park Administration with development project.
- 2015.Jun. Develop Chuangsin plant for IC final testing.
- 2015 Aug. Got the Corporate Social Responsibility Award by CommonWealth Magazine.



YoungTek Electronics Corp.

Company Management Concept

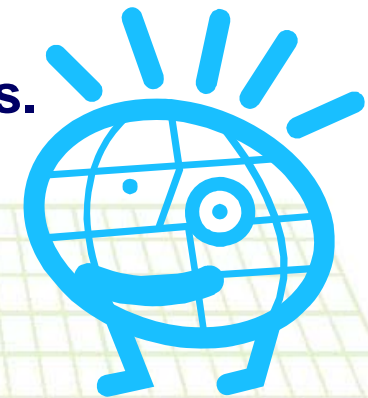
Company Profile

經營理念：(Management Concept)

主人翁經營理念；下工程即是客戶。

Treat YTEC as your own company. (Host concept)

Treat all post projects and processes as our customers.



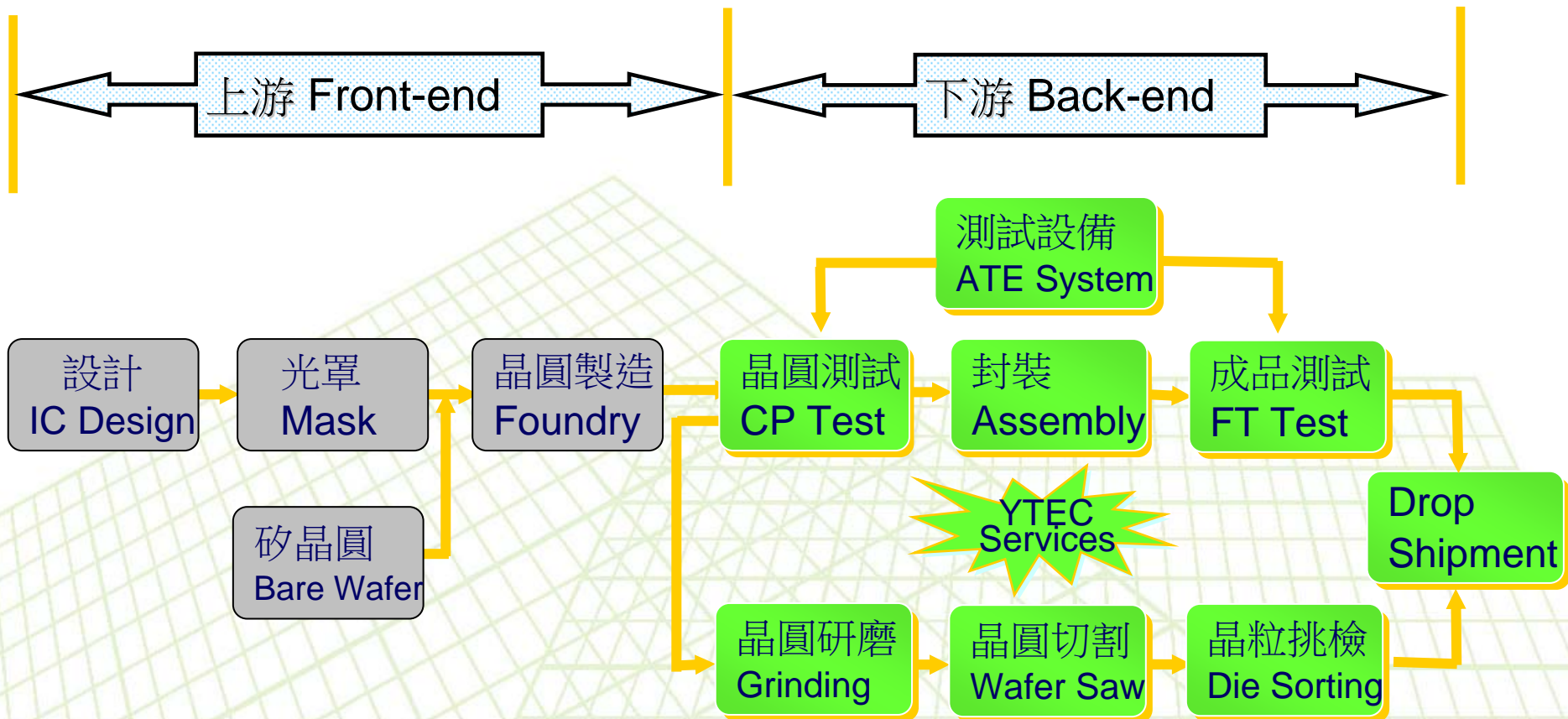
工作態度：(Working Attitude)

成功者找方法；失敗者找藉口。

A successful person will find the way to overcome a challenge

Loser finds excuses.

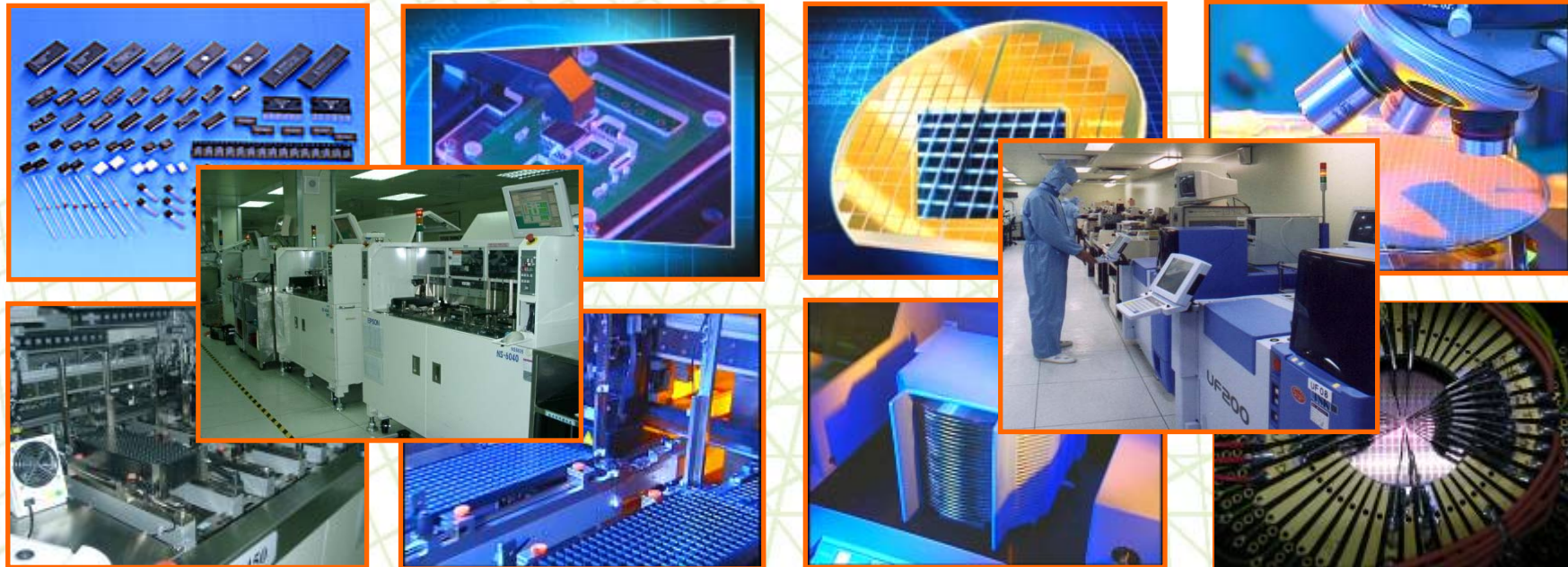
IC OEM Services Flow



專業測試代工服務(IC Testing OEM)

Company Profile

- ❑ 4"~12" Wafer testing (CP) 、 Test program and test kit development (Probe-card design and manufacture).
- ❑ IC packaging testing (FT) , Package type : DIPs 、 T/SOPs 、 L/QFPs 、 QFN 、 L/BGA...
- ❑ PC peripheral product 、 Logic 、 Analog 、 Mixed-signal 、 No-volatile memory 、 MCU 、 LCD driver IC 、 High speed/ High pin count (Scud-1A 512C) testing.
CIS(CMOS Image Sensor) 、 RF 、 MEMS 、 Finger print 、 SoC product testing
- ❑ Others : Laser trimming 、 Lead scanning 、 Test program and test kit development technical support Turn-key service (For example: PKG assembly 、 Tape-reel 、 Drop-shipment...).



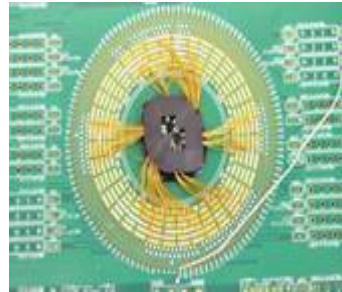
針測板設計與製作

Probe Card Design and Manufacture

Company Profile



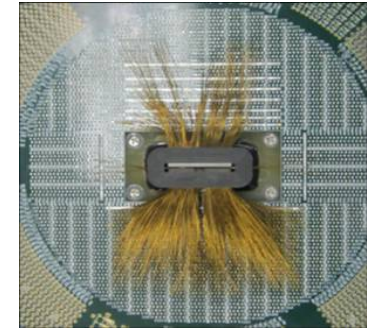
YT5100 7D (16 Dut)



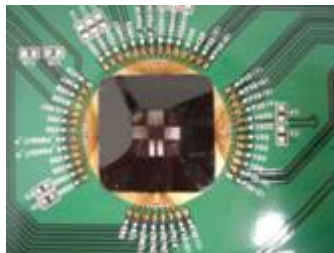
Scud 1A



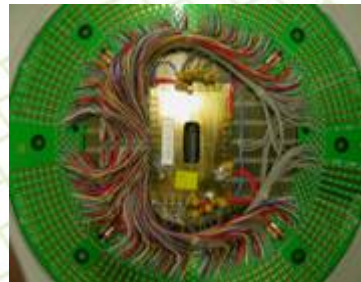
Yokogawa ST6730(Tester side)



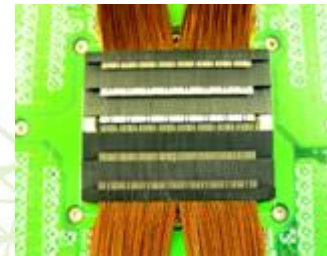
Yokogawa ST6700(Wafer side)



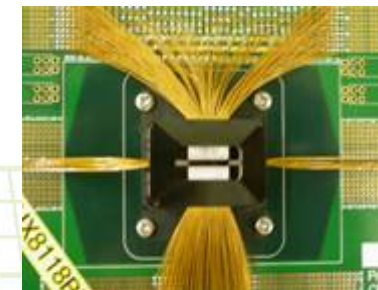
Agilent HP9400



Yokogawa TS6700(Tester side)



Advantest T5371(32dut)



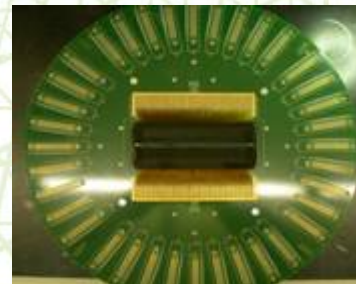
Advantest T6371(Wafer side)



Advantest T5335P(64dut)



Advantest T5335P(4dut)



*V5400 576Dut
(Wafer side)*



*V5400 576Dut
(Tester side)*

研磨、切割及挑檢代工服務 (Grinding, Sawing, P&P Service)

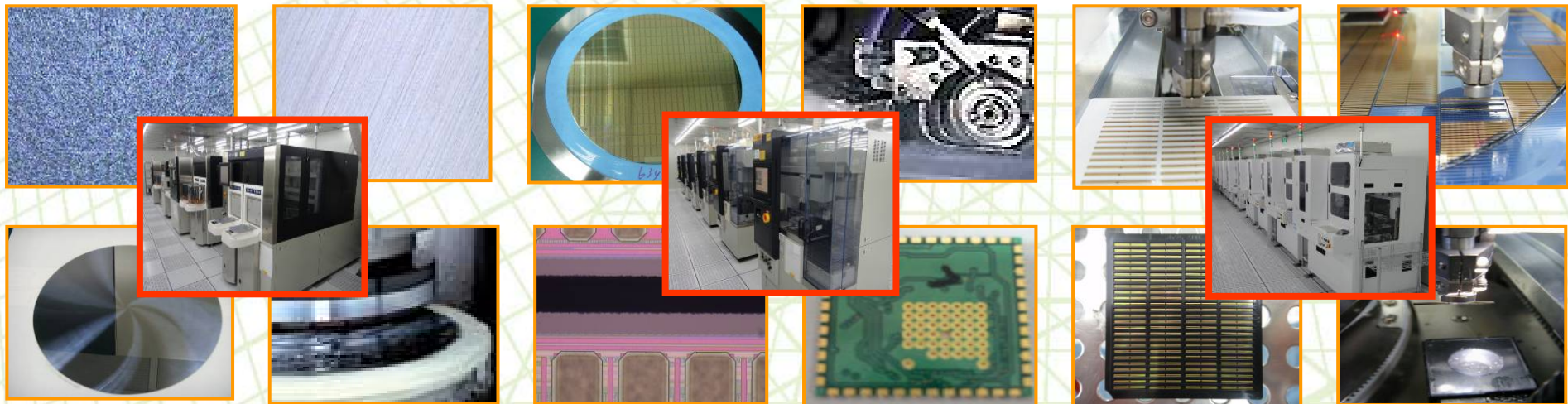
Company Profile

❑ IC Grinding、Sawing、Pick & Place

- 4"~12" Wafer back-side grinding、sawing、chip pick & place services for Consumer and gold bump COG products。
- Pick & Place Chip Back-side AOI inspection System inside。

❑ Substrate Sawing

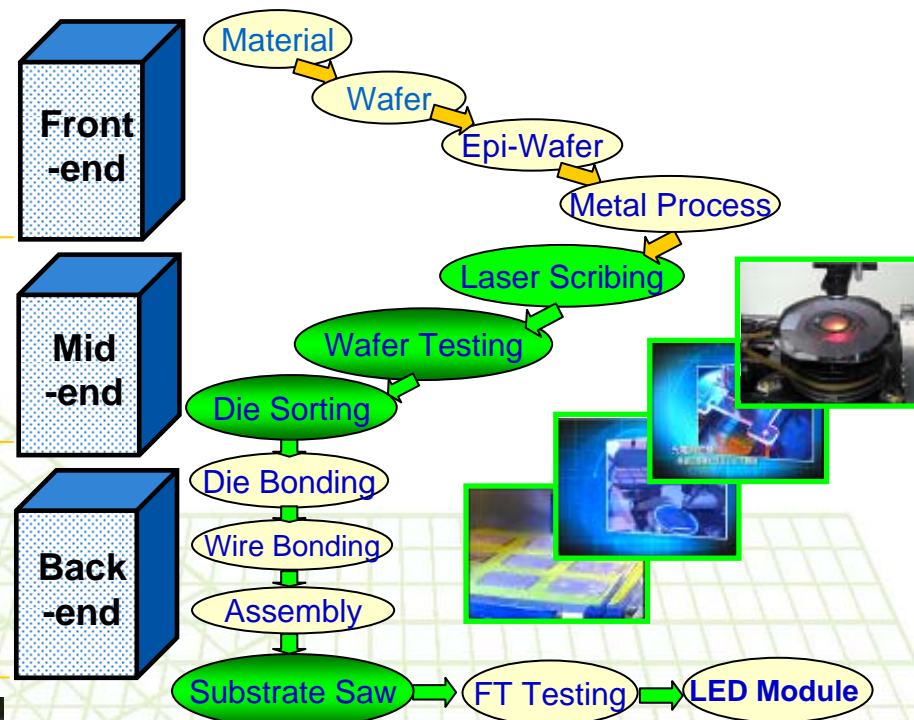
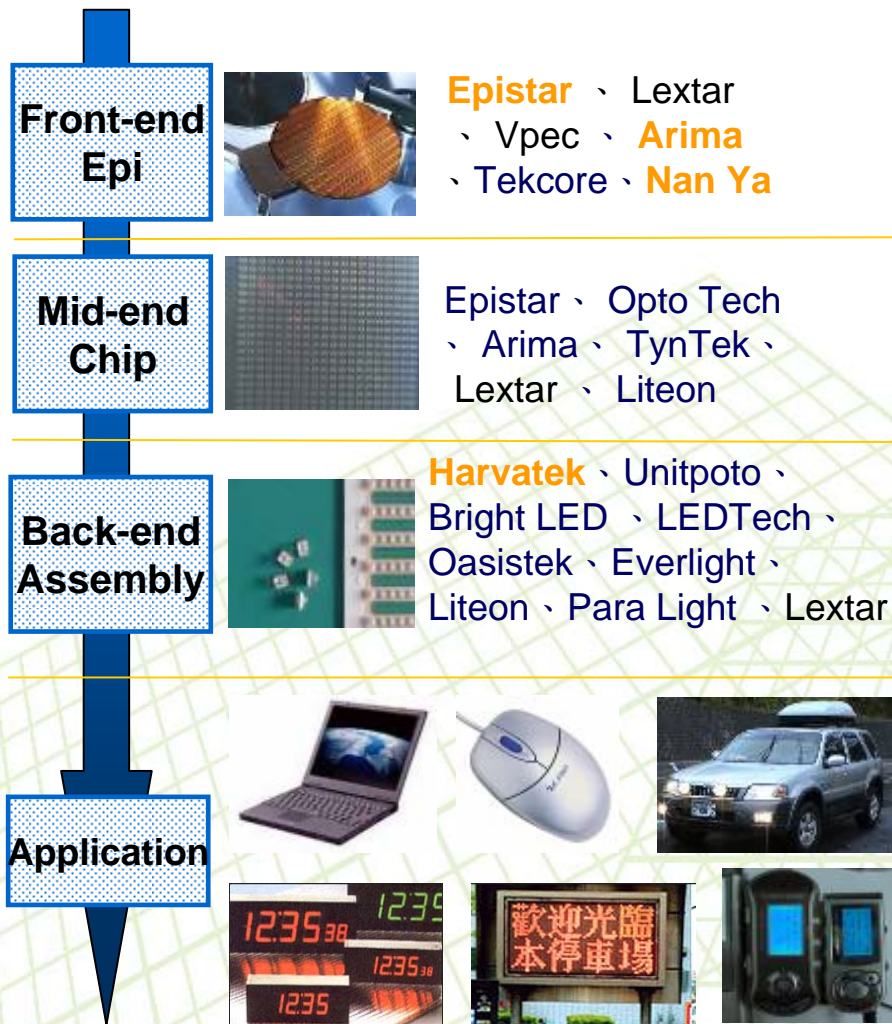
- LED package substrate、Glass substrate、Ceramic Substrate、Ceramic+FR4、Lead-frame、QFN package、HTCC、LTCC、PCB。



YoungTek Electronics Corp.

LED OEM Services

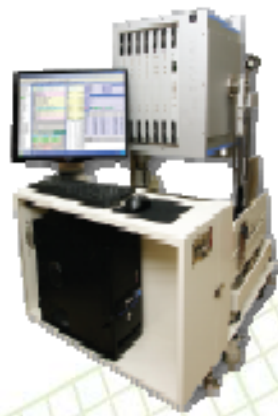
Company Profile



- **Front-end Product** : Wafer 、 Epi-Wafer , For example GaAs 、 GaAsP 、 AlGaAs 、 AlGaInP
- **Mid-end Product** : Laser Scribing 、 Wafer Testing and Pick & Place Die-sorting
- **Back-end Product** : Lamp 、 Display 、 SMD 、 IR transmission module 、 Optical Communication product 、 Substrate Saw

IC Testing Application Equipment

Company Profile



YTS100

全功能高頻SoC IC
測試機



YT6100

Fat Type
IC測試分組機



YT6200

QFN測試包裝機

Scud-1A

全功能高速測試機



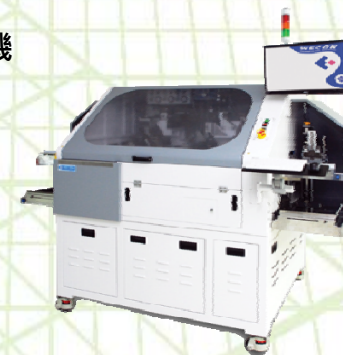
IS-610

全自動晶粒分類機



SB-800

全自動IC固晶機



YoungTek Electronics Corp.

IS-610 & SB-800 IC Auto Sorter&Die Bonder

Company Profile

IS-610 IC Auto Sorter



SB-800 IC Die Bonder



YT5100 & Scud-1A IC Tester

Company Profile

YT5100 High Speed Soc IC Tester

Scud-1A Fully Auto IC Tester



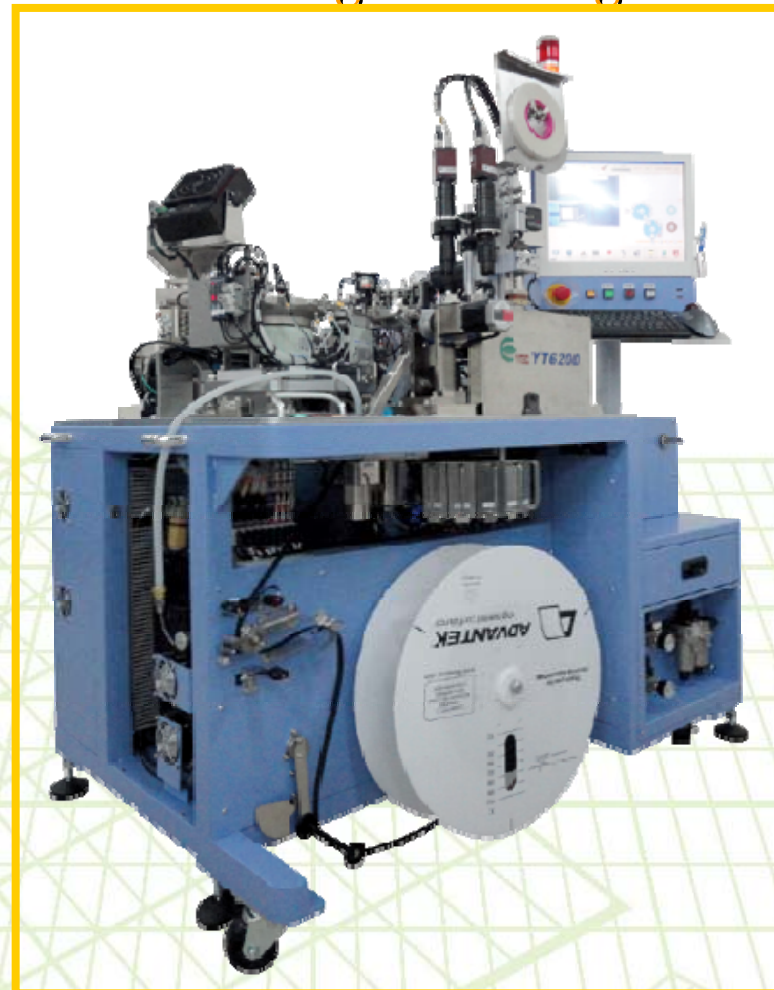
YT6110 IC Handler / YT6200 QFN Testing & Packing

Company Profile

YT6110 IC Handler



YT6200 QFN
Testing & Packing



YT1100 LED Tester(YT1100 LED 測試機)

Company Profile

□ YTSD01 → YTSD02 → YT1000 HV LED Tester(8000V ESD)
→ YT1100 HV LED Tester (Multi-station)

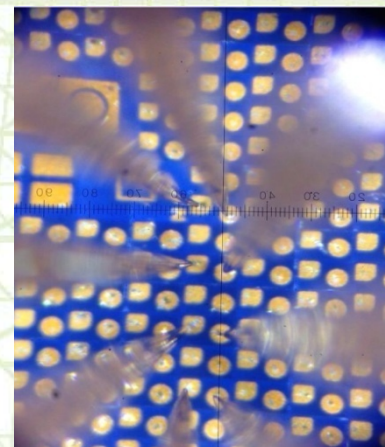
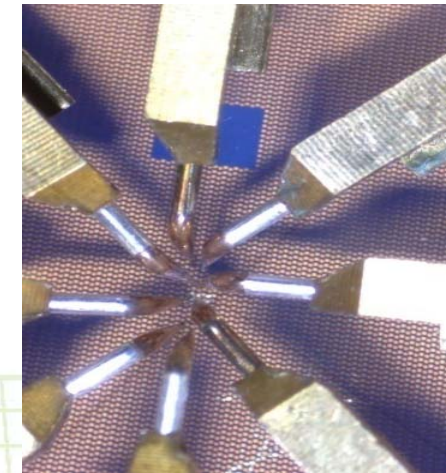


DB-260 LED Prober(晶粒檢測機)

Company Profile

PB-260 LED Prober(晶粒檢測機)

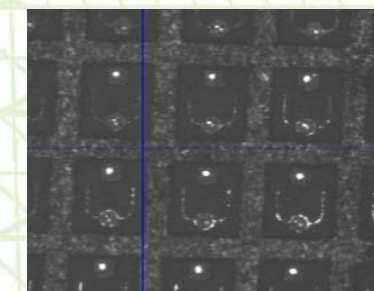
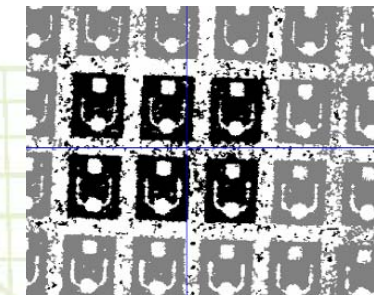
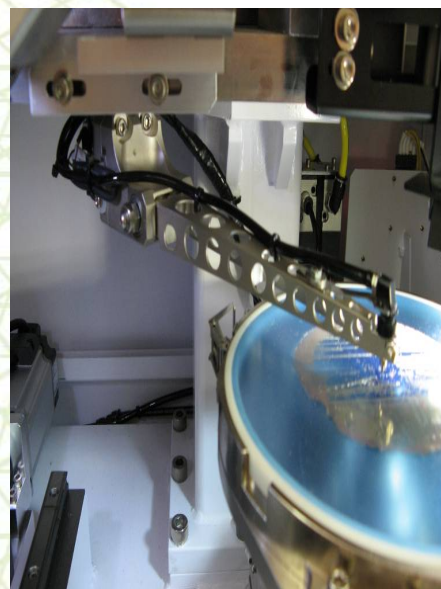
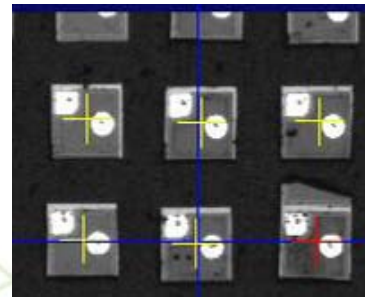
◆外觀照片



LS-360 LED Sorter(晶粒挑檢機)

Company Profile

LS-360 LED Sorter(晶粒挑檢機)



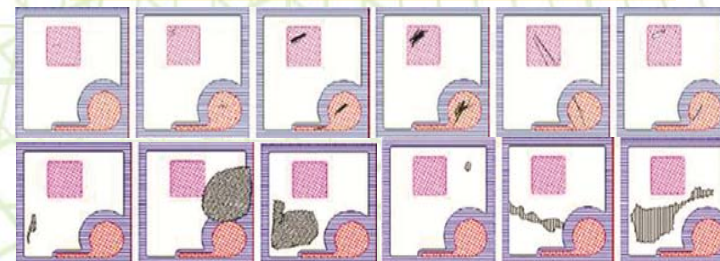
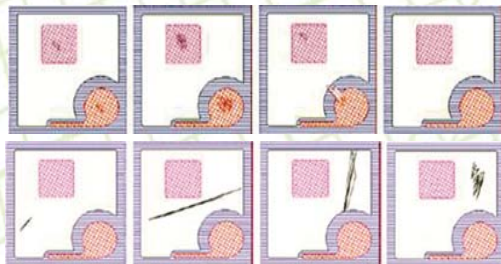
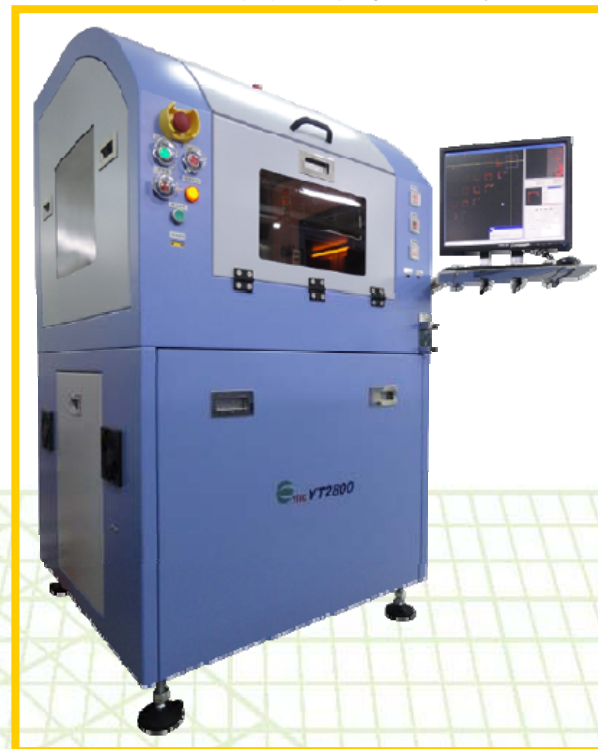
自動光學檢測系統(Auto Optical Inspection)

Company Profile

YT 5311 LED Chip/Wafer/Mask
半自動光學檢測系統



YT 2800 LED Chip/Wafer/Mask
全自動光學檢測系統



自動光學檢測應用(AOI Application)

Company Profile

被動元件、LED
產品六面外觀檢測



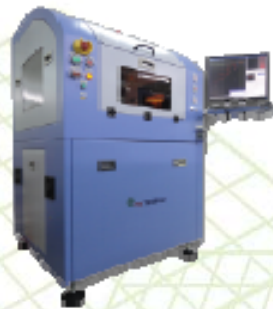
YT2300

元件六面外觀
檢測機

YT2330

被動元件六面外觀
檢測機

LED及被動元件散熱基板
產品之外觀檢測



YT2700

LED及被動元件
散熱基板之2D AOI
檢測機



YT2705

LED及被動元件
散熱基板之2D AOI
檢測機
(Auto Load/Unload)



YoungTek Electronics Corp.

LED Assembly Application Equipment

Company Profile



自動光學檢測系統(Auto Optical Inspection)

Company Profile

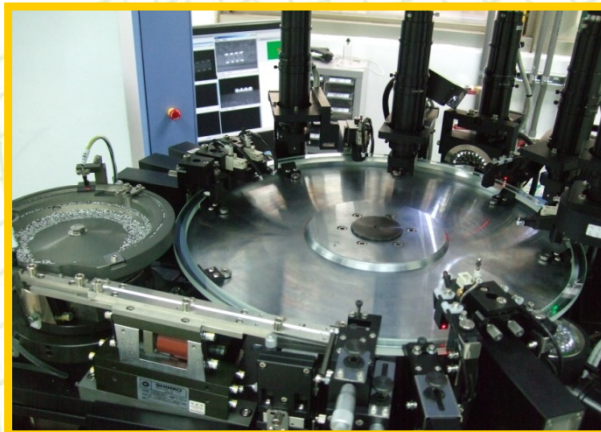
YT 2300(YT2330) Component AOI

自動光學檢測系統(雙軌)



Reel type taped products:

- Resistor
- Capacitor
- Inductor
- LED
- IC
- Relay
- Connector
- Fuse



YoungTek Electronics Corp.

DB-159 Die Bonder & YT2500 LED Dispenser

Company Profile

DB-159 Die Bonder

YT2500 LED Dispenser

DB-159 泛用型高速固晶机
High Speed Multiple Applications Epoxy Die Bonder

UPH 15K
Cyc. Time 230ms

超宽工作行程: 120 x 280mm
顶针自动测高, 防撞设计
多种制程选择
开放式参数设定



DB-159

多制程选择

- ◆ 个别产程角度控制功能(图1)
- ◆ CAD程式输入档案功能(图2)
- ◆ 多晶圆功能(图3)
- ◆ 特殊点胶固晶功能(图4)
- ◆ 多型影像寻晶功能



影像辨识系统 (图5)

- ◆ 可执行外观检查标准: 3D测、PAD污染检查、缺角、破裂、激光污染检查
- ◆ 具有缺晶、掉晶检查功能
- ◆ 制程原料可追溯控制
- ◆ 晶圆位置设定能以方形或圆形标准显示, 以提高设定精度 (图6)
- ◆ 晶圆检测修正功能



规格(Specification)

制程速度 UPH	15K (SMD) 30K (裸晶, 8.2 THRU-HOLE)	影像辨识系统 CCD	25K Die level 100x100 pixel
定位精度 Position accuracy	X, Y: 25.0um, Z: 2.5"	Resolution	5.0 pixel
晶圆直径 Wafer diam.	Max. 320 mm	载晶重量 Capacity	100kg
晶片厚度 Wafer Thickness	0.75mm	载晶高度 Capacity Height	180mm
晶片厚度公差 Wafer Thickness Tolerance	±0.02mm	载晶直径 Capacity Dia.	1310mm ± 120mm ± 100mm
工作行程 Working Range	120 x 280mm (Z: 2.5")	载晶功率 Power Req.	AC220V / 4A(Normal), 120V(16A) / 2200W
工作行程公差 Working Range Tolerance	±0.02mm (Z: 2.5")	载晶气压 Pneumatic source	5 kg/cm ²
产品重量 Product Weight	4,500kg	载晶真空 Vacuum	0.5kg/cm ² (Sub-H Vac. Pump)
载晶重量 Capacity Weight	Max. 320kg		

规格如有变更, 恕不另行通知

威控自动化机械股份有限公司
WECON AUTOMATION CORP.

台湾新竹市城东路127号
No.127, Alley 95, Fubin Rd, Hsinchu City, Taiwan
TEL: 035-5734757 FAX: 035-5734760

www.wecon.com.tw



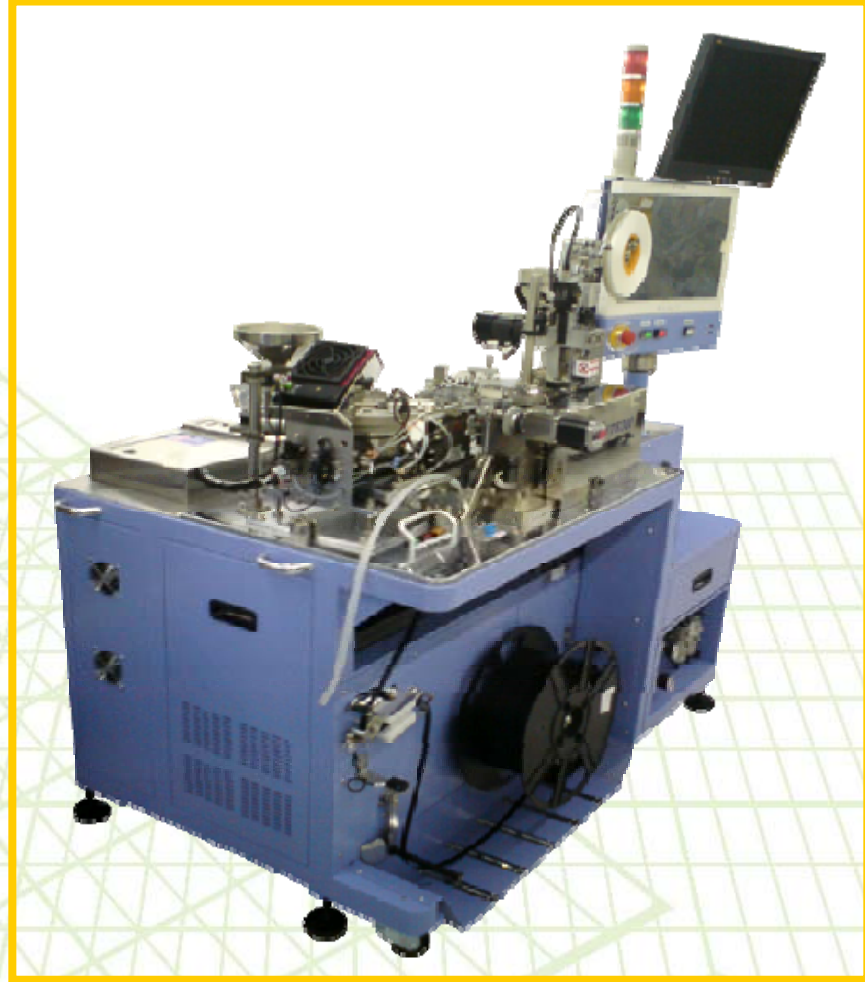
YT6400 LED Handler & YT6300 LED Tapping

Company Profile

YT6400 LED Handler



YT6300 LED Tapping

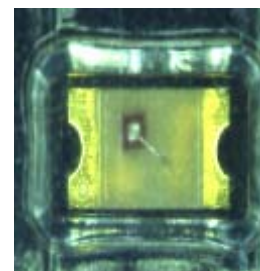


YoungTek Electronics Corp.

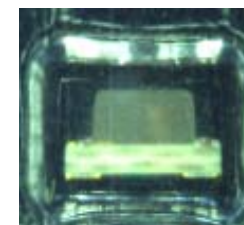
自動光學檢測系統 (Auto Optical Inspection)

Company Profile

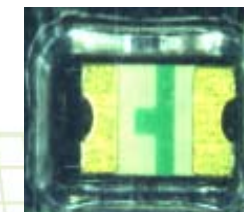
YT 2210 Reel Type Components 自動光學檢測系統



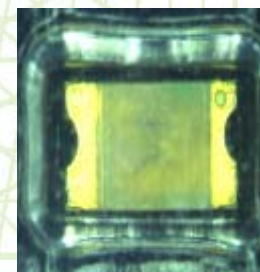
Polarity inverse package



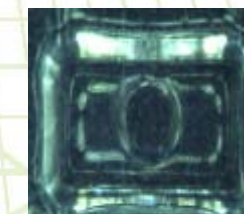
Tilt



Over turn



Mixed package



Empty

2015&2016 Combine Monthly Revenue

Company Profile
NT\$(Thousand)

Business Item/Month		Jan.	Feb	Mar	Apr	May	Jun.	Jul.	Aug.	Sep	Oct.	Nov.	Dec.	Total	Share(%)
切割挑檢代工 Sawing & Sorting OEM	2015	135,098	121,083	160,633	136,076	152,400	139,402	128,503	131,086	132,698	121,859	126,762	125,247	1,610,847	43.36%
	2016	114,165	109,432	115,984	110,092	93,623	104,501	100,793	116,044	102,267	107,367	89,972	76,263	1,240,503	34.31%
	YoY	-15.49%	-9.62%	-27.80%	-19.10%	-38.57%	-25.04%	-21.56%	-11.47%	-22.93%	-11.89%	-29.02%	-39.11%	-22.99%	
	MoM	-8.85%	-4.15%	5.99%	-5.08%	-14.96%	11.62%	-3.55%	15.13%	-11.87%	4.99%	-16.20%	-15.24%		
測試代工 Testing OEM	2015	153,402	111,282	149,694	133,104	148,019	152,532	149,951	141,844	138,247	150,328	143,175	147,463	1,719,041	46.27%
	2016	142,378	120,765	164,015	151,937	163,088	155,304	159,878	161,444	157,034	163,069	162,264	157,364	1,858,540	51.40%
	YoY	-7.19%	8.52%	9.57%	14.15%	10.18%	1.82%	6.62%	13.82%	13.59%	8.48%	13.33%	6.71%	8.11%	
	MoM	-3.45%	-15.18%	35.81%	-7.36%	7.34%	-4.77%	2.95%	0.98%	-2.73%	3.84%	-0.49%	-3.02%		
機器組裝等產品銷售 Own Product Sales	2015	34,665	26,765	62,321	20,593	35,835	25,944	13,107	47,535	24,098	38,551	26,192	29,924	385,530	10.38%
	2016	48,441	43,220	50,004	34,587	74,485	41,173	25,363	44,245	40,318	40,922	47,349	26,800	516,907	14.30%
	YoY	39.74%	61.48%	-19.76%	67.96%	107.86%	58.70%	93.51%	-6.92%	67.31%	6.15%	80.78%	-10.44%	34.08%	
	MoM	61.88%	-10.78%	15.70%	-30.83%	115.36%	-44.72%	-38.40%	74.45%	-8.88%	1.50%	15.71%	-43.40%		
營業收入淨額 (Unit:K) Sales Revenue (Net)	2015	323,165	259,130	372,648	289,773	336,254	317,878	291,561	320,465	295,043	310,738	296,129	302,634	3,715,418	100.0%
	2016	304,984	273,417	330,003	296,616	331,196	300,978	286,034	321,733	299,619	311,358	299,585	260,427	3,615,950	100.0%
	YoY	-5.63%	5.51%	-11.44%	2.36%	-1.50%	-5.32%	-1.90%	0.40%	1.55%	0.20%	1.17%	-13.95%	-2.68%	
	MoM	0.78%	-10.35%	20.70%	-10.12%	11.66%	-9.12%	-4.97%	12.48%	-6.87%	3.92%	-3.78%	-13.07%		
營業收入淨額(累計) Sales Revenue (Total)	2015	323,165	582,295	954,943	1,244,716	1,580,970	1,898,848	2,190,409	2,510,874	2,805,917	3,116,655	3,412,784	3,715,418	--	--
	2016	304,984	578,401	908,404	1,205,020	1,536,216	1,837,194	2,123,228	2,444,961	2,744,580	3,055,938	3,355,523	3,615,950		
	YoY	-5.63%	-0.67%	-4.87%	-3.19%	-2.83%	-3.25%	-3.07%	-2.63%	-2.19%	-1.95%	-1.68%	-2.68%		
總計代工成長 OEM Growth (Total)	2015	288,500	232,365	310,327	269,180	300,419	291,934	278,454	272,930	270,945	272,187	269,937	272,710	3,329,888	--
	2016	256,543	230,197	279,999	262,029	256,711	259,805	260,671	277,488	259,301	270,436	252,236	233,627	3,099,043	
	YoY	-11.08%	-0.93%	-9.77%	-2.66%	-14.55%	-11.01%	-6.39%	1.67%	-4.30%	-0.64%	-6.56%	-14.33%	-6.93%	
	MoM	-5.93%	-10.27%	21.63%	-6.42%	-2.03%	1.21%	0.33%	6.45%	-6.55%	4.29%	-6.73%	-7.38%		

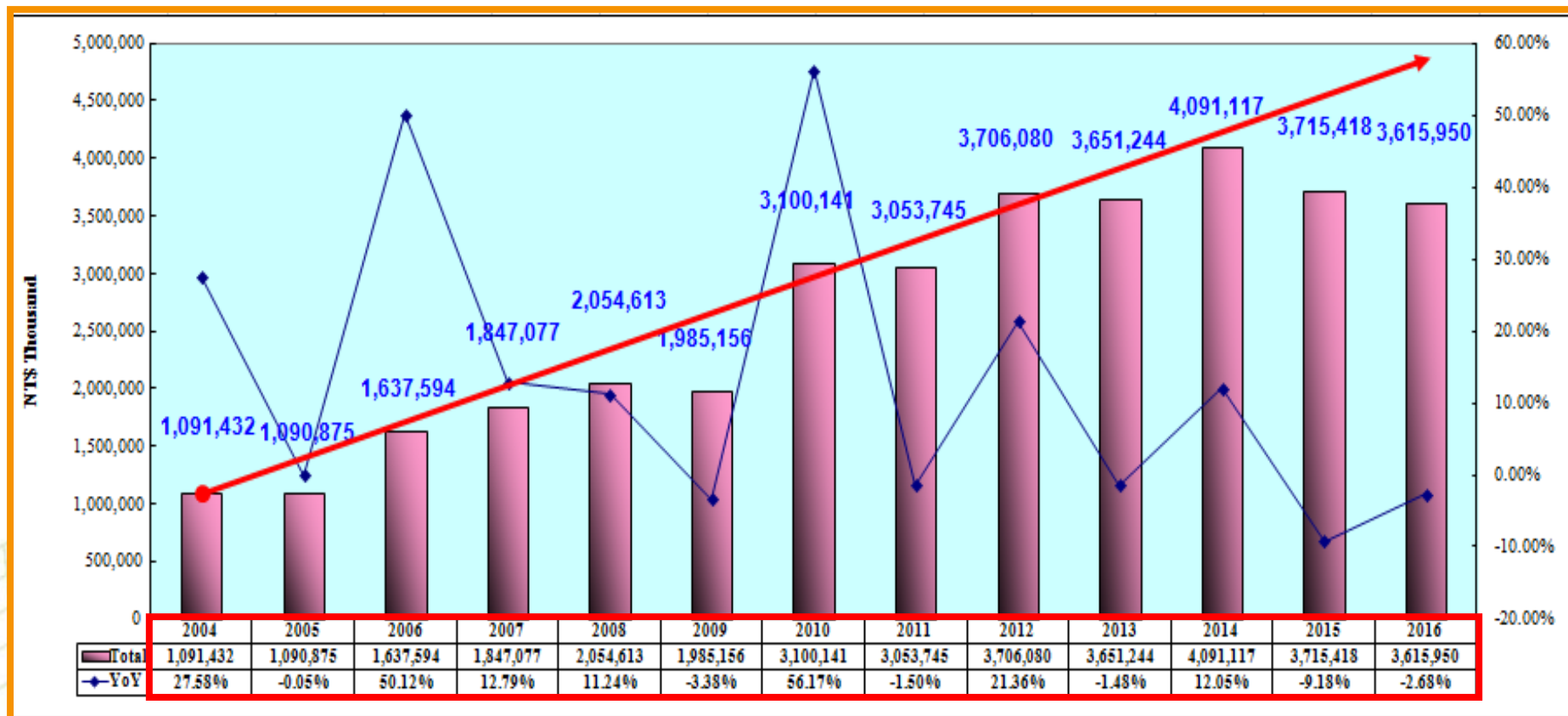
2016&2017 Combine Monthly Revenue

Company Profile
NT\$(Thousand)

Business Item/Month		Jan.	Feb	Mar	Apr	May	Jun.	Jul.	Aug.	Sep	Oct.	Nov.	Dec.	Total	Share(%)	
切割挑檢代工 Sawing & Sorting OEM	2016	114,165	109,432	115,984	110,092	93,623	104,501	100,793	116,044	102,267	107,367	89,972	76,263	449,673	37.32%	
	2017	74,272	72,701	85,775	89,102									321,850	30.63%	
	YoY	-34.94%	-33.57%	-26.05%	-19.07%										-28.43%	
	MoM	-2.61%	-2.12%	17.98%	3.88%											
測試代工 Testing OEM	2016	142,378	120,765	164,015	151,937	163,088	155,304	159,878	161,444	157,034	163,069	162,264	157,364	579,095	48.06%	
	2017	133,149	137,567	160,967	147,885									579,568	55.15%	
	YoY	-6.48%	13.91%	-1.86%	-2.67%										0.08%	
	MoM	-15.39%	3.32%	17.01%	-8.13%											
機器組裝等產品銷售 Own Product Sales	2016	48,441	43,220	50,004	34,587	74,485	41,173	25,363	44,245	40,318	40,922	47,349	26,800	176,252	14.63%	
	2017	29,879	40,097	41,785	37,666									149,427	14.22%	
	YoY	-38.32%	-7.23%	-16.44%	8.90%										-15.22%	
	MoM	11.49%	34.20%	4.21%	-9.86%											
營業收入淨額(Unit:K) Sales Revenue (Net)	2016	304,984	273,417	330,003	296,616	331,196	300,978	286,034	321,733	299,619	311,358	299,585	260,427	1,205,020	100.0%	
	2017	237,300	250,365	288,527	274,653									1,050,845	100.0%	
	YoY	-22.19%	-8.43%	-12.57%	-7.40%										-12.79%	
	MoM	-8.88%	5.51%	15.24%	-4.81%											
營業收入淨額(累計) Sales Revenue (Total)	2016	304,984	578,401	908,404	1,205,020	1,536,216	1,837,194	2,123,228	2,444,961	2,744,580	3,055,938	3,355,523	3,615,950	--	--	
	2017	237,300	487,665	776,192	1,050,845											
	YoY	-22.19%	-15.69%	-14.55%	-12.79%											
總計代工成長 OEM Growth (Total)	2015	256,543	230,197	279,999	262,029	256,711	259,805	260,671	277,488	259,301	270,436	252,236	233,627	1,028,768	--	
	2017	207,421	210,268	246,742	236,987									901,418		
	YoY	-19.15%	-8.66%	-11.88%	-9.56%										-12.38%	
	MoM	-11.22%	1.37%	17.35%	-3.95%											

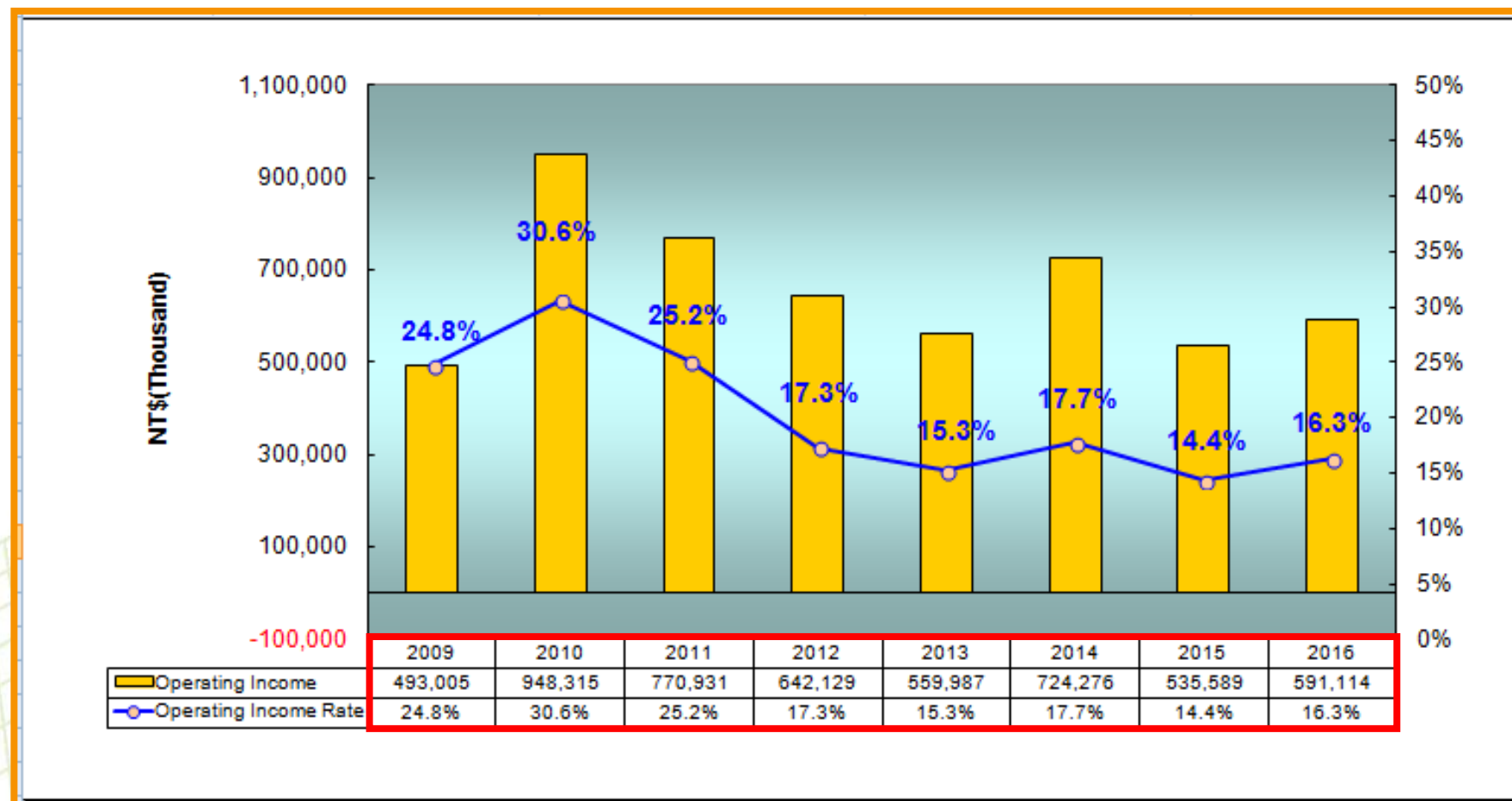
2004~2016 Combine Revenue Growth

Company Profile



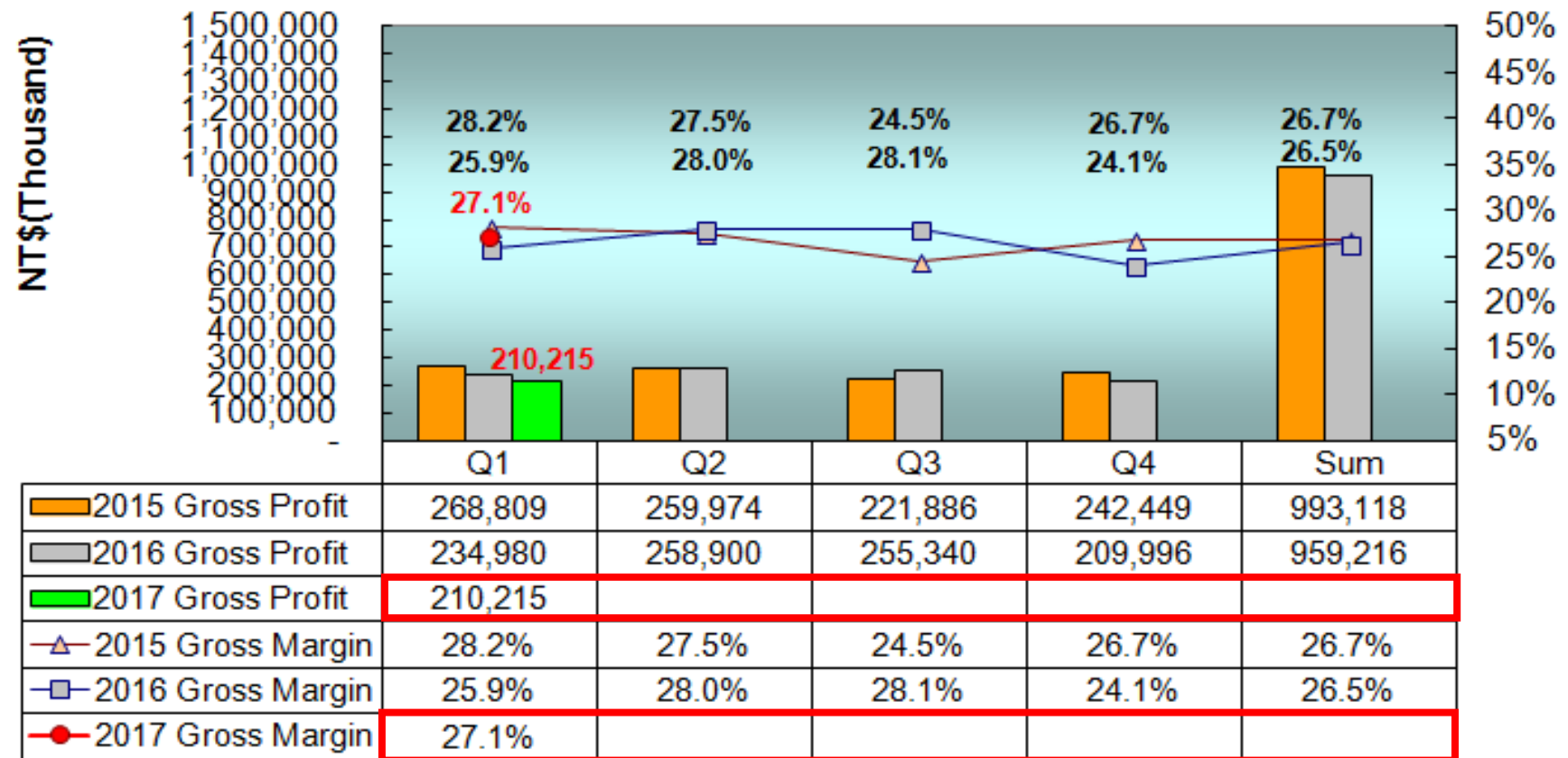
2009~2016 Combine Operating Income

Company Profile



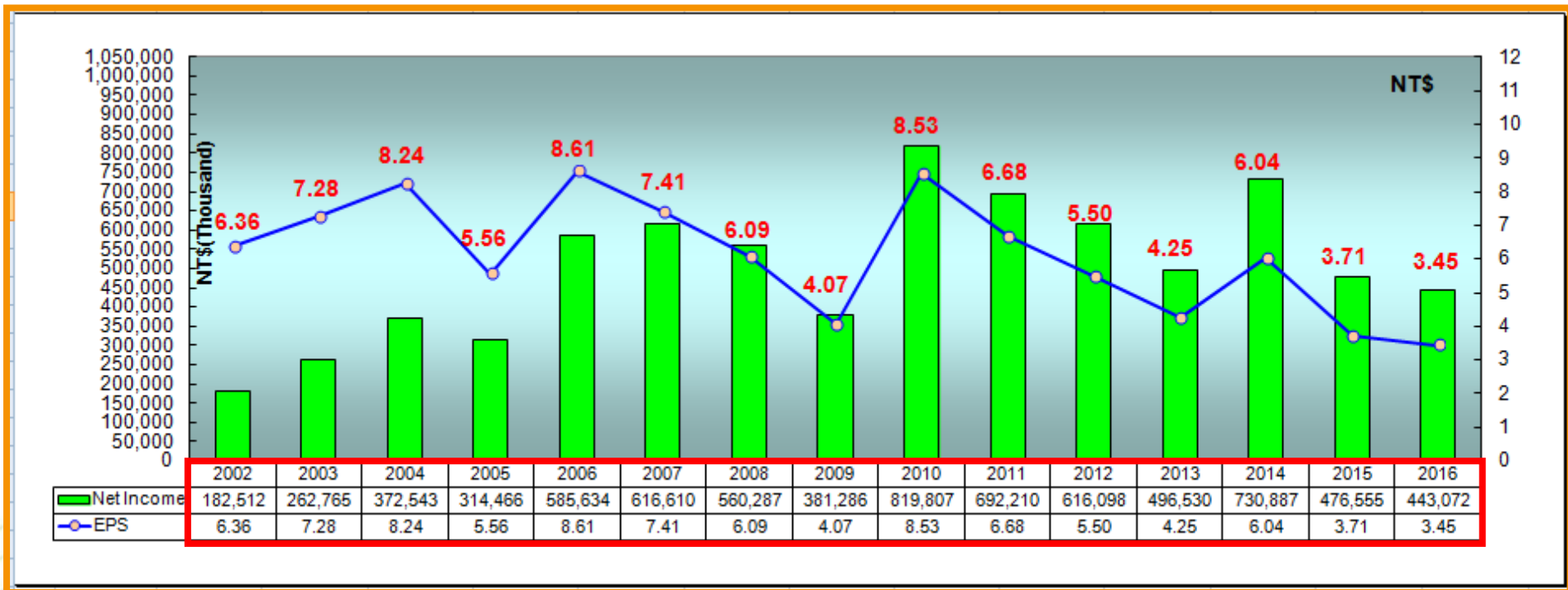
2015~2017 Combine Gross Profit

Company Profile



Yearly Net Income & EPS

Company Profile



Business Expansion Status(相關產業之狀況)

Company Profile

- **半導體及光電切挑代工服務**：2017年Q1營收QOQ降14.9%、低於年初預期,因此將持續追蹤、另LED在新的應用提昇下、公司亦開發新專案,應可適時提供市場成長之需求、相信可挹助公司之營收成長。
- **IC測試系統、IC固晶、挑揀設備及QFN測試包裝機、分類機開發**：成功的開發完成100MHZ 768/1536 pins全功能IC測試機、針對多媒體、Digital TV及高速邏輯SOC產品並行測試、並導入量產、更高階機種亦將陸續上市、另研發出IC封裝製程之固晶及挑揀設備與QFN測試包裝機及分類機、可應用於IC封裝製程及成品測試生產、更具備三合一功能(測試、外觀檢測及包裝)、以提昇IC測試代工服務之競爭優勢。
- **CIS、CCM、LED後段生產設備及AOI設備開發**：成功開發完成CIS(CMOS影像感測系統)、具備高速影像處理及完整電性測試之解決方案、並導入代工服務、挹助營收。
自行開發之CCM(影像感測模組測試設備)、LED後段生產設備及AOI(自動光學檢測系統)等設備、因應市場需求將擴展銷售、AOI設備研發係以解決半導體及光電等產業在目檢之視覺盲點並可大幅節省人力、並已將光電技術結合影像分析等與自動化設備設計、成功研發出各類型外觀檢測機。
綜觀設備銷售2016年YOY成長34.1%、符合預期、設備研發之成效已陸續顯、現2017年Q1營收QOQ微降2.9%、因此將持續追蹤、相信在持續開發新產品及功能提昇下、展望未來應可持續挹助業績成長之動力。
- **半導體代工服務**：2016年YOY成長8.1%、符合預期、現2017年Q1營收YOY成長1.1%、QOQ降10.6%,因此將持續追蹤、而YTEC在持續開發新產品與互補及平衡的產品線發酵下(如LCD、RF、MEMS、Fingerprint...etc)、展望未來應可持續挹助業績成長之動力。

Share payout composition and history

Company Profile

Year	96年度 (2007)	97年度 (2008)	98年度 (2009)	99年度 (2010)	100年度 (2011)	101年度 (2012)	102年度 (2013)	103年度 (2014)	104年度 (2015)	105年度 (2016)	106年度 (2017)
	配95年度 Profit(2006)	配96年度 Profit(2007)	配97年度 Profit(2008)	配98年度 Profit(2009)	配99年度 Profit(2010)	配100年度 Profit(2011)	配101年度 Profit(2012)	配102年度 Profit(2013)	配103年度 Profit(2014)	配104年度 Profit(2015)	配105年度 Profit(2016)
Cash(NTD)	\$4.00	\$4.00	\$3.00	\$3.00	\$4.671	\$5.238	\$4.659	\$3.668	\$5.000	\$3.300	\$3.100
Free Pair stock of	\$1.00	\$0.50	\$0.10	\$0.10	--	--	\$0.098	\$0.099	\$0.10	--	--
Stock Capital reserve fund	--	--	--	--	\$0.093	\$0.095	--	--	--	--	--
EPS(NTD)	\$8.61	\$7.41	\$6.09	\$4.07	\$8.53	\$6.68	\$5.50	\$4.25	\$6.04	\$3.71	\$3.45

公司願景 **Company Mission**

Company Profile

著眼於國內外市場的開拓，讓久元成為立足台灣的整合性後段IC及LED代工服務廠，並朝放眼世界的自有產品、自有品牌邁進。

Based on the domestic and international marketing development, YTEC has gotten a foothold as an integrated back-end IC&LED OEM factory. YTEC moves forward, with it's own products, and Own Bench Marks.



Q & A

Company Profile

Thank you very much



YTEC *YoungTek Electronics Corp.*